

CARD NEWSLETTER

CARD Staff

David O. Childers Jr., M.D.
 Chief of Developmental Pediatrics &
 Executive Director of CARD

Mae Barker, Ph.D., BCBA-D
 Clinical Director

Jeannie M. Bowles, M.B.A.
 Division Administrator

Anne M. Wilson, M.S.T., BCaBA
 Educational Coordinator/Transition
 Specialist

Elise Bowers, M.A.
 Educational Coordinator / Family
 Counselor

Katrina Ressa, B.S., BCaBA
 Educational Coordinator

Jill O'Brien, B.A.
 Educational Coordinator

Elisha Landers, M.Ed.
 Educational Coordinator

Jennifer Flagge, B.S.
 Event Coordinator

Anthony R. Rhodes, M.S.
 Educational Multimedia Specialist

Yvonne L. Gaither, L.P.N
 Scheduling Coordinator

Lauren M. Burns
 Client Services Representative

Aishe Hudson-Jackson, B.S.
 Administrative Assistant

Tyler Rounds
 Office Assistant

Maria R. Tapia, Ph.D.
 Psychological Consultant

Mary H. Belkin, Ph.D.
 Psychologist

Constituency Board Officers

Joe Golon - Chair

Lou Cabrera - Co-chair
Zohreh Kianmehr-Roumi

- Secretary

CARD serves Baker, Clay, Duval, Flagler,
 Nassau, & St. Johns County.

We offer services to family, schools, and
 community organizations who's lives come
 in contact with the autism community. CARD
 also provides services to individuals with
 vision or hearing impairments or dual sensory
 impairments.

All CARD services are at no cost to the indi-
 vidual.

CARD Seasonal Events Continue to Engage Families

Since CARD moved locations to
 the UF Developmental Pediatric one
 of the most enjoyable features of the
 new building for staff has been
 enough space to put on large sea-
 sonal events like our Winter and
 Spring festivals.

Hosting these events provides
 families of children with disabilities
 the opportunity to publically celebrate
 the holidays, take photos with classic
 characters, and engage in craft activi-
 ties in an accepting, patient environ-
 ment.

Seasonal events often provide snacks
 and drinks, social activities like talent
 shows, and access to community services
 providers.

Staff have been very pleased with atten-
 dance to these events and we enjoy the
 opportunity to interact with families on a
 more personal and social level.

All festival events are advertised
 ahead of time on the CARD
 Web-calendar and the weekly
 CARD update email.

To sign up for our
 mailing lists simply
 email your name to:
Anthony.Rhodes@jax.ufl.edu

Upcoming Events

**Jun 05 - Emergency Preparedness
 Conference for Persons with
 Disabilities**

**Jun 16 - CARD Workshop: National
 Standards Report**

**Jun 17 - CARD Workshops: Best Edu.
 Practices for Serving
 Students with Autism**

**Jun 22 - Resumes, Applications,
 & Interviews Workshop**

**July 27 - CARD Constituency Board
 Meeting**

Jan 13 - 18th Annual CARD Conference

Download flyers for these events at
www.hscj.ufl.edu/pediatrics/autism/



CARD's Mission

To educate and empower individuals and families throughout the lifespan
 by providing support, assistance, and awareness within the community;
 with the goal of optimizing the potential of all individuals with autism and
 related disabilities.



Dear Constituents,

We are very grateful to the Florida State Legislature and Governor Crist for maintaining CARD funding statewide for the 2010-2011 fiscal year. This will allow us to maintain our present staffing and to continue to provide important services and programs in our community. While we are elated that we can continue to serve, we realize that our center must make some changes to our program and our services in the year ahead. At this time, we are looking towards the future and considering the following questions carefully as we make these changes to our program: (1) What are the present needs of our individuals with autism? Our families? Our educational professionals, service providers, and community members? (2) How do we serve an increasing number of people with limited staff and funding for services; (3) How should CARD operate in light of advances in technology, changes in insurance providers, and local resources?

In order to answer these questions and provide the best support and services for our community, we will be asking for your input. In the next two months, we will be hosting Focus Group Meetings in each of our six counties that we serve. During these public meetings, we hope that we can secure public input to guide our future actions. We will also be sending out surveys through our distribution list, so if you cannot attend the focus group meeting, you still have a means to share your input. Last, we will be forming an Educational Professional Advisory Group with representatives from our public and private educational settings. We will, of course, continue to consider the advice and input from our Constituency Board members who meet quarterly to advise our center. On a very positive note, I'd like to end my column with three recent highlights ☺

Tyler Rounds who has been working as an office assistant at our center for the past four years recently graduated with a Bachelor's degree in public relations from the University of North Florida. Recently, Tyler shared his story about living with autism with the faculty of Thunderbolt Elementary school where he inspired the audience and educated them about inclusion.

Jill O'Brien joined our center as a new educational coordinator on May 3. We are glad to have her join our team of coordinators that currently includes Elise Bowers, Anne Wilson, Katrina Ressa, and Elisha Landers.

CARD hosted a 3-day intensive PROMPT training (May 6-9) for speech-and-language pathologists (SLP). This helps increase the number of SLP's who are equipped to provide specialized speech services to students with autism in our local community. Of the thirty attendees, CARD sponsored ten SLP's from the local school systems and paid their registration for the training.

Best regards to you all,

Mae Barker, Ph.D., BCBA-D
Clinical Director
Center for Autism and Related Disabilities
Mae.Barker@jax.ufl.edu

CARD is Changing the Way It Provides Services to the Community

The last few years have been complicated financially for most of Florida's non-profit agencies. CARD, unfortunately, has been no exception.

As of June 01, do to ever increasing budgetary restraints, CARD will be changing its approach to providing

services to individuals and families in the Jacksonville community. Most notably, the center will no longer be providing school or home-based consultative services.

In order to best serve the increasing number of families enrolled in our programs who find difficulty accessing our Duval office, CARD will be providing new off-site support clinics in Baker, Flagler, and Nassau counties.

We regret these new limitations, but look forward to adapting and continuing to provide the best services we can to our constituents and families.

Sincerely,
David Childers, M.D.
Executive Director of CARD

CHANGES AHEAD



Visual Supports Workstation

Materials used to create visual supports, schedules, and the Picture Exchange Communication System (PECs) are available at the CARD Parent Workstation. Parents now have access to a computer and visual support software (such as Boardmaker and Picture This), color printer, laminator, Velcro, and other materials necessary for the creation of supports for their children.

CARD staff are also available to help you learn how to use the resources in the workstation to best meet your child's individual needs.

To reserve a timeslot for the parent workstation call: (904)633-0760 or email Lauren.Burns@jax.ufl.edu

National Standards Report: Translating Research Into Educational Practice

Presented by Susan Wilczynski, executive director of the National Autism Center, on **June 16th**; this CARD workshop details the extent to which favorable outcomes have been reported recently based on the age, diagnostic group, and the treatment targets (e.g., communication, problem behaviors, etc.). Treatments for which less evidence is currently available will be identified while components of evidence-based practice will be reviewed. Specifically, in addition to research findings, professional judgment, & data-based clinical decision-making, the values and preferences of families and the capacity to accurately implement treatments in schools will be examined.

For more information see the online flyer on the CARD website:
www.hscj.ufl.edu/pediatrics/autism/

Resumes, Applications, & Interviews Workshop

CARD-Jax is offering a workshop **June 22-24th**, 2010 designed for graduating students, parents of students, and adults seeking gainful employment in today's competitive market. Seating is limited. For more information or to register contact anne.wilson@jax.ufl.edu.

Florida Department of Education Surveys Parents on IEP Process

Beginning **Feb 01** and ending **July 01, 2010**, the FLDOE is collecting parent surveys concerning "How well is your school supporting your involvement in your child's education?"

Results, which are reported directly to the United States Department of Education, will contribute to Florida's Annual Performance Report and will be posted for the public at www.fldoe.org/ese.

The survey can be taken on the web at www.ESEsurvey.com.

Pssstt. Did you know...?

- www.kidsbowlfree.com/center.php?alley_id=562
Kids bowl two free games per day, each day this summer?
- www.regmovies.com/nowshowing/familyfilmfestivalschedule.aspx?state=FL
Free movies are offered weekly at the Regal Theaters?
- www.sallycorp.com/company/tours.htm - This animation/robotics studio downtown reserves free tours for kids?



Join the CARD mailing list to receive weekly updates on local autism events in the Jacksonville area. Simply email your name and email address to:
anthony.rhodes@jax.ufl.edu

Parent Response to the 2009 Annual CARD Conference Scholarship:

Over the last few years, CARD-Jax has been lucky to offer a handful of scholarships to families to attend the Annual CARD conference. The scholarships cover registration and hotel expenses. Here are responses from last years recipients.

We moved to the JAX area about 4 years ago and this is the 3rd CARD conference I've attended. This year it was because I was fortunate to have received a scholarship from CARD. There's always something new to be learned when you have a family member with Autism. There's always another strategy you need to learn to prepare your family to transition to the next phase. Sometimes the workshops and presentations at the CARD conferences are more pertinent to your particular situation than others; sometimes it's acquiring information you're going to need to be prepared for the future; sometimes it's reinforcing the plan you've developed; sometimes it's being inspired to have hope! The information you learn can sometimes be daunting, but always empowering. I believe one of the most valuable gains of attending a CARD conference is the connections you make with the other attendees, whether they are parents, educators, therapists etc. At this year's conference there were two special experiences for many. Two young men, James Williams and Jeffrey Schmidt told their stories. They told of their struggles, challenges, supports and achievements in coping with their Autism. As they had started to speak, another mom and I looked at one another and said, "Can you imagine our sons doing that?" However, throughout their presentations, the young men both spoke about never imaging, when they were younger, being able to speak to an audience like this. They spoke of conquering their challenges, overcoming their obstacles, fulfilling their dreams and being proud and happy about their accomplishments. It reaffirmed my belief in hope! --Lesa Walsh

Thank you so much for offering me a grant to attend this year's annual CARD conference in Lake Mary. It gave me the opportunity to meet other parents, ESE professionals, SLPs, and CARD professionals from across the state. Jeffrey Schmidt and James Williams did such a great job of helping people understand what it's like to get through school as someone with ASD . They offered perspective-taking to neuro-typicals and yet did so in an entertaining way. I learned more about behavior, came home with new tools and ideas, and got to talk with others about the challenges & successes that they experience as a person with ASD, or as a parent or as a professional. I came home re-inspired and energized. As a parent and a professional, it gave me a break from the stresses of daily life and offered me enough perspective to come home. supplied with a few choice books and an extended network of professionals and parents. I have already begun sharing information and materials with professionals in my Jacksonville network. We are not in this alone, and the conference reminded me of that. I loved the conference's slogan, "Together we can." It is perfect. Thank you again.
Best wishes, Jeannie Theriault

Thank you first for blessing us with such a wonderful gift and opportunity to go and learn about how we can be better parents for our 7 year old son, who has almost all the autistic tendencies you can think of (not officially diagnosed yet), and is vision impaired. My wife and I enjoyed the CARD conference very much! Its nice to even just be around so many people working, learning, and desiring the same goals. We learned some new techniques for helping him learn more, and new devices that can assist him, and lots of programs and resources to help as well.

Our favorite part was probably the Teaching Emergent Language workshop where again we heard some great techniques and skills to teach our son - which some we have already implemented, and also that some of the methods we were already using were confirmed for us to continue using them too to help push him and learn new stuff and more every day.
Thank you so much, we really appreciate it.

- Mark & Helen Smith

I particularly enjoyed Ilene Chambers and her emphasis on Inclusion. I work in Duval county as a speech pathologist at two schools with self contained and inclusion ASD children. The information was timely. I am going to try to include inclusion reading at the K level mixing a small class of general education children and ASD children. I have small reading groups in schools before of ASD and general education children. Both were successful but putting them together could really benefit the ASD children with good role models. Thanks you for the wonderful conference this year.

- Marilyn Bosworth

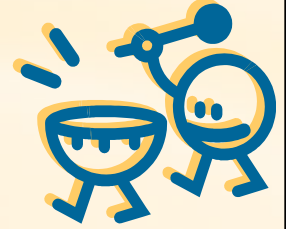


Shinedown Donation to Provide Drum Therapy for Autistic Children.

Thanks to the rock & roll band Shinedown (www.shinedown.com), CARD will soon be offering individual percussion lessons for students with autism with local instructor, Jay Brown. Lessons will last 30-40 minutes and be at no cost to the individual.

Teaching materials for the lessons (drumsticks, practice pads, workbooks, etc) were also funded with the donation.

Interested parents should call CARD to learn more information about appointments and when lessons will officially begin (633-0760).



Special thanks to **SHINEDOWN** for their generosity and support.

18th Annual CARD Conference

JANUARY 13-16, 2011
LAKE MARY MARRIOTT

OVER 30 EXPERT PRESENTERS

If funding is available, CARD-Jax will try to continue its conference scholarship program for families. Scholarship monies pay for hotel reservations and registration fees. Look for a formal announcement in our weekly email updates around Oct or Nov.

Conference Topics include:

Best Practices, Technology, Family Issues, Transition, Employment, Adult Issues, Research Advances, Early Intervention, Education & more
For more information about the conference call

407-737-2566

Jill

Elisha



CARD welcomes new staff members Elisha Landers, M.Ed. and Jill O'Brien, B.A. Elisha obtained a Masters of Education degree in School Guidance and Counseling while currently earning her BCBA in behavior analysis. Jill comes to us from the Early Steps program with a psychology background and an Infant/Toddler Developmental Specialist Certification.

Jacksonville Area Summer Camps

Play Works Therapies and Developmental Program Summer Camp

18 month to 6 years old
12276 San Jose Blvd.
Suite 507
Jacksonville, FL 32223
904-288-8910
playworkstx@comcast.net

Hope Haven

4600 Beach Boulevard
Jacksonville, FL 32207
904-346-5100
Summer camps for children with disabilities. Also have after-school programs.

Younglife Summer Camp (St. Johns)

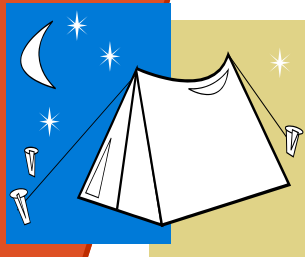
Week long Christian camp for teens with hearing or visual impairments.
904-824-9388

Florida Diabetes Camp

1 week sessions, scholarships available
(352) 334-1321 / Gainesville, FL

Angelwood Summer Day Camp

For children with disabilities
Jacksonville, FL 32257
Elevecchia@angelwoodjax.org
www.angelwood.org/summer.html



Summer Camp Tips:

- 1) Have a plan B, just in case the camp doesn't work out. Finding a good match for your child isn't always easy. Be prepared to make other plans for the summer just in case.
- 2) Don't be afraid to ask about Staff Experience with autism and Camper-to-Staff Ratios.
- 3) Inquire about camp scholarships. Many camps offer them.

Little Star Center

Autism Summer Camp
11512 Lake Mead Avenue
Suite 801
Jacksonville, FL 32256
904-928-0112
littlestarcenter@msn.com
www.littlestarjax.com/skills_camp.html

Angelwood Summer Day Camp

Children with Disabilities
4674-2 Hood Road
Jacksonville, FL 32257
elaveccchia@angelwoodjax.org
www.angelwoodjax.org/summer.html

CP of Jacksonville: K.I.D.S.

(Kids in Dynamic Settings)
(up to age 12)
3311 Beach Blvd.
Jacksonville, FL 32207
www.cpnef.org 733-3070

CAMP H.Y.P.E.:

6 Week exciting summer program that has been exclusively designed for deaf and hearing-impaired youth ranging in ages from 7-17 years old
www.prideinaction.com/Summer.htm

Great Strides Rehabilitation

Jacksonville, FL 32203
(904) 886-3228
www.greatstridesrehab.com/

Jacksonville Children's Commission Summer Camp Programs List

General Admission. See list at:
www.coj.net/Departments/Recreation+and+Community+Services/Recreation+and+Community+Programming/Recreation+Activities/Summer+Camp.htm

Jacksonville School for Children with Autism

Activities designed by an Occupational Therapist. Limited enrollment.
4000 Spring Park Rd.
Jacksonville, FL 32207
(904) 732-4343
www.jsca.us/summer_camp.shtml

Mosh 2010 Summer Adventure Camp

General Admission. K-7th grade.
New theme each week
1025 Museum Circle
Jacksonville, FL 32207
(904) 396-6674
www.themosh.org/SummerCamp.html

Communication Institute for Excellence Summer Camp

Full day, two-week programs
General Admission. Ages 5 to 17.
Jacksonville, FL
(904) 537-3629
www.stewartmillercommunication.com/summercamp2007.htm

Camp Eureka

Camp for children with autism spectrum disorder (ASD). Space is limited.
(904) 242-7863 / Ponte Vedra Beach
rdifl@hotmail.com

DOSA Camps (Flagler County)

Camp I Am Special / Camp Promise / Camp Care
(5-day recreation and residential)
(Child to young adult with disabilities)
(904) 356-0810 - www.dosacamps.com

