

**RESEARCH**



**EDUCATION**



**PATIENT CARE**



**DEPARTMENT OF MEDICINE**

---

ANNUAL REPORT 2014-2015



**TABLE OF CONTENTS**  
**ACADEMIC YEAR 2015 (7/14 – 6/15)**

- I. Statement from the Chairman**
- II. Department Organizational Overview**
  - a. Administration
  - b. Division Chiefs
  - c. Residents/Fellows
- III. Graduate Medical Education**
  - a. Internal Medicine Residency Training Program
  - b. Subspecialty Fellowship Programs
  - c. Student Education Programs
- IV. Department Research**
- V. Individual Divisions**
  - a. Cardiology
  - b. Endocrinology, Diabetes and Metabolism
  - c. Gastroenterology
  - d. General Internal Medicine
  - e. Hematology and Medical Oncology
  - f. Infectious Diseases
  - g. Nephrology and Hypertension
  - h. Pulmonary, Critical Care and Sleep Medicine
  - i. Rheumatology and Clinical Immunology

**Department of Medicine**  
**University of Florida**  
**College of Medicine—Jacksonville**  
**653-1 West 8<sup>th</sup> Street, L20**  
**Jacksonville FL 32209**  
**904-244-8846**  
**[www.hscj.ufl.edu/medicine/](http://www.hscj.ufl.edu/medicine/)**

**STATEMENT FROM THE CHAIRMAN**  
**ACADEMIC YEAR 2015 (7/14 - 6/15)**

Dear Colleagues and Friends:

I am pleased to provide you the Annual Report of the Department of Medicine at the University of Florida- College of Medicine - Jacksonville for the academic year July 2014 through June 2015. The Department once again has excelled in every aspect of the academic mission. The following is a brief description of the departmental accomplishments for the past year.

**Patient care:** The clinical volumes in all subspecialties remained strong. Five subspecialties initiated patient care activities in the North side campus. The clinical excellence of the faculty was coupled with continued improvements in clinical operations. The lag time for access to clinics improved and the no show rates were decreased. These improvements helped to enhance the patient satisfaction scores and staff morale.

**Education:** There were 14 faculty members in the Department who received the Exemplary Teacher Award. The scholarly productivity of the house staff remains high and one third of presentations of the Annual Research Day were made by the residents and fellows within the Department. Continuing Medical Education (CME) initiatives were offered by several Divisions within the Department including a highly successful Internal Medicine review symposium, annual Nephrology symposium and musculo-skeletal ultra sound course.

**Research:** There were a total of 87 peer reviewed publications, 8 book chapters and 14 monographs authored by faculty members. Faculty made 141 national and regional presentations. During the academic year 2015, we saw doubling of extramural research funding within the Department.

Overall, the Department continues to excel in its mission of educating students and residents and faculty has maintained their scholarly productivity. Once again, I am proud to have the privilege of being the Chairman of such an exceptionally productive Department.

Sincerely,

Arshag D. Mooradian, M.D.  
Professor and Chairman

**DEPARTMENT ORGANIZATIONAL OVERVIEW**  
**ACADEMIC YEAR 2015 (7/14 - 6/15)**

**Arshag D. Mooradian, M.D.**

Chairman, Department of Medicine

**Linda R. Edwards, M.D.**

Associate Chair, Department of Medicine

**James Scolapio, M.D.**

Associate Chair, Department of Medicine

**Jeffrey House, D.O.**

Program Director, Internal Medicine Residency

**Carlos Palacio, M.D., M.P.H.**

Associate Program Director, Internal Medicine Residency and Associate Director, Medical Student Clerkship

**Nilmarie Guzman, M.D.**

Associate Program Director, Internal Medicine Residency

**Cristian Landa, M.D.**

Director, Medical Student Clerkship

**Michael Haas, Ph.D.**

Director of Research

**Ronald Stone, M.B.A., R.D.**

Administrator

### DIVISION CHIEFS

**Cardiology**

Theodore Bass, M.D.

**Endocrinology, Diabetes and Metabolism**

Kent R. Wehmeier, M.D.

**Gastroenterology**

James Scolapio, M.D.

**General Internal Medicine**

Linda R. Edwards, M.D.

**Hematology and Medical Oncology**

Fauzia Rana, M.D.

**Infectious Disease**

Michael Sands, M.D., M.P.H. &amp; T.M.

**Nephrology and Hypertension**

Charles Heilig, M.D.

**Pulmonary, Critical Care and Sleep Medicine**

Abubakr Bajwa, M.D.

**Rheumatology and Clinical Immunology**

Gurjit Kaeley, M.D.

**RESIDENTS/FELLOWS****Chief Residents**

Jason Bellardini, MD  
Jean Touchan, MD

**Housestaff I**

Firas Baidoun, MD  
W. Russell Cullinane, DO  
Khadeeja Esmail, MD  
Maedeh Ganji, MD, MBA  
Joseph Geffen, DO, MPH  
Rommy Issa, MD  
Francois Jo-Hoy, MD  
Ozdemir Kanar, MD  
Ryan Kunjal, MD  
Leslie Lester, DO  
Reem Louli, MD  
Matthew McDiarmid, DO  
Omar Moore, MD  
W. James Plante II, MD  
Lauren Stemboroski, DO  
Omar Tolaymat, MD  
Jeffrey Winder, DO

**Housestaff II**

Robert Ali, MD, MPH  
Farah Al-Saffar, MD  
Candice Baldeo, MD  
Martin Cerda, DO  
Sana Chaudhry, MD  
Melissa Dakkak, DO  
Ena Gupta, MD, MPH  
Abdulwahab Hritani, MD  
Roshan Lala, MD  
Nimeh Najjar, MD  
Rahman Nakshabendi, MD  
William Taylor Palfrey, MD  
Joshua Samuel, MD  
Daisy Torres-Miranda, MD

**Housestaff III**

Tracy Ashby, DO  
Amit Babbar, MD  
Sharica Brookins, MD  
Bilkisu Gaye, MD  
Saif Ibrahim, MD  
Kaitlin McCurdy, MD  
Vinay Minocha, MD  
Bashar Mourad, DO  
Jesse Onyenekwe, MD  
Kavita Pal, MD  
Dhruv Panchal, MD  
Virin Ramoutar, MD  
Khurram Tariq, MD  
Sam Thomas, MD

**Medical School**

American University of Antigua College of Medicine  
Aleppo University Faculty of Medicine

**Medical School**

University of Aleppo Faculty of Medicine  
William Carey University College of Osteopathic Medicine  
Ross University School of Medicine  
St. Matthew's University School of Medicine (Grand Cayman)  
Nova Southeastern University College of Osteopathic Medicine  
Ross University School of Medicine  
University of the West Indies School of Medicine, Trinidad & Tobago  
Ross University School of Medicine  
University of the West Indies School of Medicine, Trinidad & Tobago  
Kansas City University of Medicine College of Osteopathic Medicine  
University of Aleppo Faculty of Medicine  
Nova Southeastern University College of Osteopathic Medicine  
University of Florida College of Medicine  
Medical University of the Americas (Nevis)  
Lake Erie College of Osteopathic Medicine  
FIU Herbert Wertheim College of Medicine  
Lake Erie College of Osteopathic Medicine

**Medical School**

University of the West Indies School of Medicine, Trinidad & Tobago  
Al-Nahrain University College of Medicine  
University of the West Indies School of Medicine, Trinidad & Tobago  
Touro University College of Osteopathic Medicine  
Ross University School of Medicine  
Philadelphia College of Osteopathic Medicine  
Lady Hardinge Medical College  
Aleppo University Faculty of Medicine  
St. George's University School of Medicine  
Ross University School of Medicine  
Hamdard College of Medicine & Dentistry  
Ross University School of Medicine  
St. George's University School of Medicine  
Ponce School of Medicine

**Medical School**

Debusk College of Osteopathic Medicine  
St. George's University School of Medicine  
Meharry Medical College  
Ross University School of Medicine  
Al-Nahrain University College of Medicine  
Ross University School of Medicine  
University of the West Indies School of Medicine, Trinidad & Tobago  
Lake Erie College of Osteopathic Medicine  
Ross University School of Medicine  
Ross University School of Medicine  
Ross University School of Medicine  
University of the West Indies School of Medicine, Trinidad & Tobago  
St. George's University School of Medicine  
St. George's University School of Medicine

**Subspecialty Fellowship Programs**

Cardiac Electrophysiology  
 Cardiology  
 Endocrinology  
 Gastroenterology  
 Interventional Cardiology  
 Infectious Disease  
 Medical Oncology  
 Nephrology  
 Pulmonary Critical Care  
 Rheumatology

**Subspecialty Fellow – Housestaff IV**

Rabie Adam-Eldien, MD - Nephrology  
 Ronald Brown II, MD - Gastroenterology  
 Ayham Chamseddin, MD - Endocrinology  
 Naila Choudhary, MD - Cardiology  
 Matthew Clark, MD - Gastroenterology  
 Danisha Figueroa, MD – Infectious Disease  
 Amit Gupta, MD - Cardiology  
 Adey Hasan, MD - Nephrology  
 Garry McCulloch, MD - Cardiology  
 Jason Hew, MD– Medical Oncology  
 Ke Ning, MD – Medical Oncology  
 Nachiket Patel, MD - Cardiology  
 Monica Plazarte, DO - Endocrinology  
 Avinash Ramdass, MD - Pulmonary Critical Care  
 Kasey Treger, DO - Pulmonary Critical Care  
 Sidra Younus, MD - Nephrology

**Subspecialty Fellow – Housestaff V**

Nicholas Agresti, MD - Gastroenterology  
 Nader Bahri, MD - Nephrology  
 Khyati Baxi, MD - Cardiology  
 Juan Blum-Guzman, MD - Gastroenterology  
 Valeria Duarte, MD - Cardiology  
 Madhu Emani, MD – Medical Oncology  
 Muhammad Faisal, MD – Pulmonary Critical Care  
 Gabriel Faz, MD - Cardiology  
 Sahil Garg, MD - Nephrology  
 Carmen Isache, MD – Infectious Disease  
 William Kurban, MD - Endocrinology  
 Phuong Ngo, MD - Cardiology  
 Asuka Ozaki, DO - Cardiology  
 Laurie Ramrattan, MD - Rheumatology  
 Harshit Shah, MD - Endocrinology  
 Furqan Siddiqi, MD - Pulmonary Critical Care  
 Estela Thanos, DO - Cardiology

**Subspecialty Fellow – Housestaff VI**

Charles Bennin, MD - Cardiology  
 Angel Chan, MD - Cardiology  
 Linda Engwenyu, MD - Cardiology  
 Jacinta Green, MD - Cardiology  
 Sujai Jalaj, MD - Gastroenterology  
 Wassim Jawad, MD - Cardiology  
 Ann Lee, MD - Gastroenterology  
 Vinoo Ramsaran, MD – Pulmonary Critical Care  
 Amita Singh, MD – Pulmonary Critical Care  
 Kamaldeep Singh, DO - Cardiology

**Program Director**

Steven Hsu, MD  
 Gladys Velarde, MD  
 Kent Wehmeier, MD  
 James Scolapio, MD  
 Ted Bass, MD  
 Michael Sands, MD  
 Dat Pham, MD  
 Charles Heilig, MD  
 J. Davis Cury, MD  
 Gurjit Kaeley, MD

**Medical School**

University of Khartoum Faculty of Medicine  
 University of Louisville School of Medicine  
 University of Damascus Faculty of Medicine  
 Punjab Medical College  
 St. Matthew’s University School of Medicine (Belize)  
 New York Medical College  
 University College of Medical Sciences and Guru Teg Bahadur Hospital  
 Al-Quds University Faculty of Medicine  
 St. Matthews University School of Medicine  
 University of the West Indies School of Medicine, Jamaica  
 Ross University School of Medicine  
 Rosalind Franklin University of Medicine & Science  
 Philadelphia College of Osteopathic Medicine  
 University of the West Indies School of Medicine, Trinidad & Tobago  
 College of Osteopathic Medicine of the Pacific  
 Shifa College of Medicine

**Medical School**

American University of the Caribbean School of Medicine  
 Qazvin University of Medical Sciences  
 University of South Carolina School of Medicine  
 Universidad Catolica de Santiago de Guayaquil  
 Universidad Favaloro Facultad de Ciencias Medicas  
 Bangalore Medical College  
 Dow Medical College  
 University of Texas Medical School at Houston  
 Maulana Azad Medical College  
 Universitatea de Medicina si Farmacie Grigore T. Popa  
 University of Aleppo Faculty of Medicine  
 University of Oklahoma College of Medicine  
 Texas College of Osteopathic Medicine  
 University of the West Indies School of Medicine, Trinidad & Tobago  
 Pramukhswami Medical College  
 Sindh Medical University  
 Lake Erie College of Osteopathic Medicine

**Medical School**

UMDNJ-New Jersey Medical School  
 University of Illinois College of Medicine  
 Brown University School of Medicine  
 Rosalind Franklin University Chicago Medical School  
 SUNY at Downstate - Brooklyn College of Medicine  
 St. George’s University School of Medicine  
 Ross University School of Medicine  
 University of the West Indies School of Medicine, Trinidad & Tobago  
 M.P. Shah Medical College  
 Nova Southeastern College of Osteopathic Medicine

**Subspecialty Fellow – Housestaff VII**

Pedro Cox-Alomar, MD - Interventional Cardiology  
Michael Seawell, MD - Interventional Cardiology

**Medical School**

Universidad Central del Caribe School of Medicine  
University of Texas Medical School at San Antonio



**GRADUATE MEDICAL EDUCATION**  
**ACADEMIC YEAR 2015 (7/14 - 6/15)**

## Highlights

The office of Graduate Medical Education (GME) had another successful year of program maturation and leadership development. The year was highlighted high quality scholarly work by resident physicians, as well as a remarkable increase in the numbers of presentations and publications by the House Staff. The 2015 Match was also very successful for the upcoming intern class, and our graduates had similar successes in attaining fellowship training opportunities for the next academic year. Areas such as Quality Improvement, Patient Safety, milestones, disparities in health care delivery, and transitions in care were just some of the subjects of focus for the training programs. The following report will detail some of the academic highlights over the past year.

As with years past, the residency program continues to enjoy success in the ABIM pass rate. Considered a major barometer to the academic success of any residency program, this remains a focus for the core program as well as the fellowships. The ABIM routinely monitors and reports the three year rolling average of all programs in the country. The core program is proud to report that the three year rolling average for its graduates is 91%, with is significantly higher than the national average of 85%. This is also higher than most internal medicine training programs within the state of Florida. This success is a testament to the hard work the trainees have put into board preparation as well as the teaching contributions from the faculty.

As previously mentioned, the graduating residents of 2015 were able to land a number of high quality fellowships. Most of the residents who applied to residency were successful in getting into the fellowships of their choice. Nine of our graduates have gone on to programs in various specialties, including infectious disease, nephrology, cardiology, pulmonary/critical care, and hematology/oncology. As in years past, half of our future fellowship trainees are staying here, while the other half are studying abroad at programs such as Medical College of Georgia, Henry Ford, Vanderbilt, University of Kentucky, University of Virginia, and New York. Three graduates pursued there interest in Hospital Medicine, and we were lucky enough to keep two strong leaders as chief residents.

This year's chief residents continued to meet the high standard that we become accustomed to having lead our program. Drs. Bellardini and Touchan were on the front lines teaching high quality morning report conferences, running ward services, urgent care clinic, simulation training sessions, and medical student teaching sessions. Their leadership and teaching will make or break an academic year, and this year's accomplishments are a direct reflection of their efforts. Dr. Guzman continues to mature in her role as Associate Program Director. Assigned to the daunting task of creating, maintaining and updating curriculum, she is now is directly responsible for the didactics that or residents receive. New in this area is the addition of a "High Yield Board Topics" lecture series that is designed to prepare residents for their future ABIM exam. In its second year, it remains some of our most popular lecture series for our trainees. The program has also benefited from the continued advancement and leadership of Dr. Palacio. His creativity has resulted in a number of new experiences which the trainees have benefited from, including working at the Sulzbacher Center. Although he continues to be successful with scholarship as well as clerkship, he has the newly added role as chair of the Clinical Competency Committee. Dr. Palacio has continued to work as Chair of the Clinical Competency Committee, an assembly charged with the important task of assessing resident's performance and advancement to eventual goal of independent practice.

The Department of Medicine was successful again in receiving several Exemplary Teacher Awards. This year's 14 recipients are as follows: Dominick J. Angiolillo, Abubakr A. Bajwa, James D. Cury, Nilmarie Guzman, Michael J. Haas, Alan K. Halperin, Jeffrey G. House, Cristian O. Landa, Ghania F. Masri, Diana I. Mercado, Juan C. Munoz, Carlos Palacio, M.D., Michael L. Sands, and Vandana Seeram. About 28% of platform and poster presentations of fellows and residents were made by the members of the Department and 14 posters (out

of 41) were presented by our faculty and postdoctoral associates. Of the platform presentations Dr. Kaitlin McCurdy was the fourth place prize winner and Dr. Saif Ibrahim received the 6th place prize. Among the poster presentations cardiology fellows Dr. Lydia Engwenyu was the 1st place prize winner and Dr. Kamaldeep Singh received the 2nd place prize. The residents continue to work tirelessly on abstract presentations for local, regional and national platforms. Residents continue to gravitate toward high quality conferences, including the Duval County Medical Society, Florida Chapter American College of Physicians Meetings (both spring and fall), American Federation for Medical Research Southern Regional Meeting, Southern Hospital Medicine Conference, CHEST Annual Meeting, Digestive Disease Week, and the American College of Gastroenterology Annual Meeting. Residents continue to impress in sheer volume of scholarly endeavors, producing greater than 100 presentations, publications, abstracts, and grants. Presentations alone more than doubled any efforts from years past. This eclipses the previous academic year, which had previously been the highest mark to date.

**Subspecialty Fellowship Programs:** The fellowship programs continue to have success, and many of their individual accomplishments are detailed in their division reports. Of note, most programs are now stable with an Assistant Program Director, to assist with the ever increasing ACGME requirements. These additions help stabilize programs and relieve the stress for Program Directors, Program Administrators, and trainees. Most programs were successful in the MSMP match, and in fact had the fewest number of trainees that they've had to scramble for in several years. Fellowship programs continue to work toward innovative strategies for teaching, research, recruitment, and even expansion.

**Student Education:** Dr. Cristian Landa and Dr. Carlos Palacio continued to promote student education within the department. Students consistently rated the inpatient internal medicine experience as one of high quality and a great learning environment. On the outpatient setting, students had more exposure to IM subspecialties, which were also very well received. There was a very high demand from visiting medical students for rotations on this campus and this past year had the highest number of external students than any preceding year. Visiting students rotated on internal medicine, inpatient cardiology, MICU, endocrinology, infectious disease, and nephrology. These students enjoyed the learning environment so much, that the intern class for the subsequent academic year was largely made from students that rotated on this campus.

## LISTING OF PROGRAM LEADERSHIP



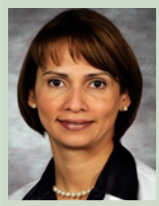
### **Jeff House, D.O., Associate Professor and Program Director**

Medical School / Graduation date	Nova Southeastern University	1997
Rotating Internship	Broward General Hospital	1998
Internship/residency and year	University of Florida Jacksonville	2001



### **Carlos Palacio, MD, Associate Professor, Associate Program Director and Associate Clerkship Director**

Medical School / Graduation date	University of Miami	1993
Internship/residency and year	University of Florida Jacksonville	1996
Chief Medical Resident	University of Florida Jacksonville	1997



**Nilmarie Guzman, MD, Assistant Professor and Associate Program Director**

Medical School / Graduation date	Ponce School of Medicine	1996
Internship/residency and year	Damas Hospital	1999
Subspecialty training and year	Infectious Diseases/University of Florida Jacksonville	2006



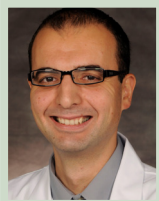
**Cristian O. Landa, MD, Assistant Professor and Student Clerkship Director**

Medical School / Graduation date	Ross University School of Medicine	2009
Internship/residency and year	University of Florida Jacksonville	2012



**Jason A. Bellardini, MD, Post-doctoral Associate and Chief Medical Resident**

Medical School / Graduation date	American University of Antigua	2011
Internship/residency and year	University of Florida Jacksonville	2014
Chief Medical Resident	University of Florida Jacksonville	2015



**Jean N. Touchan, MD, Post-doctoral Associate and Chief Medical Resident**

Medical School / Graduation date	University of Aleppo	2010
Internship/residency and year	University of Florida Jacksonville	2014
Chief Medical Resident	University of Florida Jacksonville	2015

## PUBLICATIONS

*Sorted by category (published manuscripts, published abstracts, presentations and grants), and by year within each category. Residents are underlined.*

### **Published manuscripts**

Kanar O, Nakshabendi R, Jiwani F, Liu Y, Allsopp W, Berry AC. Giardiasis: a malignant mimicker? Intern Emerg Med. 2015 Jun 9

Torres-Miranda D, Al-Saffar F, Ibrahim S, Font-Diaz S. Rapidly progressive seeding of a community acquired pathogen in an immune-competent host--end organ damage from head to bone. Infect Dis Rep. 2015 Jun 9;7(2):5849

Berry AC, Nakshabendi R, Baltz AC. Not all helicobacter are pylori. Clin Gastroenterol Hepatol. 2015 Jun;13(6):A23-4

Nakshabendi R, Berry AC, Munoz JC. A plunging case of intermittent dysphagia. Gastroenterology. 2015 Jun;148(7):e7-8

Nakshabendi R, Berry AC, Munoz JC. An unusual cause of chronic painless hematochezia. Gastroenterology. 2015 Jun;148(7):e9-10

Nakshabendi R, Berry AC, Munoz JC. An unusual cause of lower gastrointestinal bleeding. Clin Gastroenterol Hepatol. 2015 Apr;13(4):A23

Al-Saffar F, Gupta E, Siddiqi F, Faisal M, Jones LM, Seeram V, Louis M, Cury JD, Bajwa AA, Shujaat A. Is There Any Association between PEEP and Upper Extremity DVT? Crit Care Res Pract. 2015;2015:614598. doi: 10.1155/2015/614598. Epub 2015 Apr 2

Baldeo C, Hritani AW, Ali R, Chaudhry S, Khawaja FN. Malignant perivascular epithelioid cardiac sarcomas: a case report and a review of the literature. Case Rep Cardiol. 2015;2015:258140. doi: 10.1155/2015/258140. Epub 2015 Apr 22

Nakshabendi R, Berry AC, Munoz JC. An unusual cause of lower gastrointestinal bleeding. Clin Gastroenterol Hepatol. 2015 Apr;13(4):A23

Al-Saffar F, Torres-Miranda D, Ibrahim S, Shujaat A. How an opportunistic infection can mess with your brain and take your breath away: a rare case of simultaneous lung and brain abscess due to streptococcus anginosus. Case Rep Infect Dis. 2015;2015:462459. doi: 10.1155/2015/462459. Epub 2015 Apr 1

Berry AC, Nakshabendi R, Abidali H, Atchaneeyasakul K, Dholaria K, Johnson C, Kishore VA, Baltz AC. Adverse effects of grape seed extract supplement: a clinical case and long-term follow-up. J Diet Suppl. 2015 Feb 17

Sohail MR, Palraj BR, Khalid S, Uslan DZ, Al-Saffar F, Friedman PA, Hayes DL, Lohse CM, Wilson WR, Steckelberg JM, Baddour LM. Predicting risk of endovascular device infection in patients with Staphylococcus aureus bacteremia (PREDICT-SAB). Circ Arrhythm Electrophysiol. 2015 Feb;8(1):137-44

Nakshabendi R, Berry AC, Nakshabendi A. A curious cause of acute encephalopathy. Clin Gastroenterol Hepatol. 2015 Feb 24. pii: S1542-3565

Berry AC, Nakshabendi R, Baltz AC. Not all helicobacter are pylori. Clin Gastroenterol Hepatol. 2015 Jan 28. pii: S1542-3565(15)00105-6

Ghasemzadeh N, Hritani AW, De Staercke C, Eapen DJ, Veledar E, Al Kassem H, Khayata M, Zafari AM, Sperling L, Hooper C, Vaccarino V, Mavromatis K, Quyyumi AA. Plasma stromal cell-derived factor 1 $\alpha$ /CXCL12 level predicts long-term adverse cardiovascular outcomes in patients with coronary artery disease. Atherosclerosis. 2015 Jan;238(1):113-8

Brookins SM, Ormenisan C, Makary RF, Monteiro CI, James LR. The bumpy lumpy kidney that dumped protein. Kidney Int. 2015 Oct;88(4):917 Epub 2015 Jan

Hritani AW, Alkaddour A, House J. Does gastrointestinal dysmotility predispose to recurrent or severe forms of clostridium difficile infections? Case Rep Gastrointest Med. 2014;2014:575216

Berry AC, Tick ME, Patel BB, O'Malley CW, Nakshabendi R, Bellardini J, Caplan A, Berry NA, Reuther III WL. Diabetic ketoacidosis following administration of cervical epidural steroid injection in a non-diabetic. J Med Cases. 2014;5(9):495-497

Ramoutar V, Landa C, James LR. Acute tubular necrosis (ATN) presenting with an unusually prolonged period of marked polyuria heralded by an abrupt oliguric phase. BMJ Case Rep. 2014 Aug 22;2014

**Published abstracts**

Subari S, Baidoun F, Hreh M, Patnaik M, Hashmi S, Elliott M, Hogan W, Litzow M, Al-Kali A. Effect of prior hypomethylating agent (hma) use on clinical outcome of patients (pts) with secondary acute myeloid leukemia (saml) arising from myelodysplastic syndrome (mds) when treated with standard induction chemotherapy (7+3). J Clin Oncol (Meeting Abstracts). May 2015;33:15\_suppl e18041

Cheema N, Baidoun F, Zblewski D, Hashmi S, Gangat N, Wolanskyj A, Hogan W, Litzow M, Chen D, Al-Kali A. Effect of grade (G) 3 fibrosis on clinical outcome of patients (Pts) with myelodysplastic syndromes (MDS): Mayo Clinic Experience. J Clin Oncol (Meeting Abstracts). May 2015;33:15\_suppl 7085

Hritani AW, Minocha V, Patel A, Antoun P. Adderall XR and peripheral arterial vasculopathy: a case report and a review of the literature. Reviews in vascular medicine. 2015, Mar; 3(1): 1-4

Samuel J. Primary Leiomyosarcoma of inferior vena cava extending into the right atrium and ventricle. J Invest Med. 2015;63(2):310

Gupta E, Minocha V, Landa C. Rare elusive diagnosis of NK cell Lymphoma. J Invest Med. 2015;63(2):163

Babbar A, Bohatch L, House J. Rare presentation of a parathyroid carcinoma associated with brown tumors. J Invest Med. 2015;63(2):112

Al-Saffar F, Ibrahim S, Bajwa A, Qureshi T, Shujaat A, Louis M, Seeram V, Bhatti H, Jones L, Cury J. Predicting the need for upfront dual therapy in pulmonary arterial hypertension. J Invest Med. 2015;63(2):300

Al-Saffar F, Ibrahim S, Seeram V, Shujaat A. Diagnosis of pseudo-pulmonary emboli with endobronchial ultrasound. J Invest Med. 2015;63(2):299

Al-Saffar F, Ibrahim S, Clark M. Pin worms infection presenting as Crohn's disease. J Invest Med. 2015;63(2):199

Nakshabendi R, Clark M, Hritani A, Munoz J, Kanar O, Nakshabendi A, Nakshabendi I. Hepatic encephalopathy as the presentation of congenital spleno-renal shunt in the absence of hepatic cirrhosis. J Invest Med. 2015;63(2):136

Hritani A, Baidoun F, Poenariu A. Multiple bilateral kidney infarcts as initial presentation of paroxysmal atrial fibrillation. J Invest Med. 2015;63(2):54

Hritani A, Dakkak M, Baxi K, Nakshabendi R, Paterick T. Global stress-induced cardiomyopathy with left and right ventricular dysfunction in the setting of severe chronic obstructive pulmonary disease (COPD) exacerbation. J Invest Med. 2015;63(2):53

Ibrahim S, Al-Saffar F. An unusual case of coinciding anomalous coronary artery and papillary fibroelastoma. J Invest Med. 2015;63(2):79

Ibrahim S, Al-Saffar F. Controlling atrial fibrillation by atrial flutter ablation in the presence of la enlargement. J Invest Med. 2015;63(2):78

Ibrahim S, Al-Saffar F. Hemoconcentration as a marker of decongestion in the management of acute decompensated heart failure and its role as a predictor for readmission. J Invest Med. 2015;63(2):358

Geffen JB, Nakshabendi R, Clark M, Munoz J. A type II choledocal cyst presenting as pancreatic mass. J Invest Med. 2015;63(2):132

Ali RA, Baldeo C, Stemboroski L, Cury J, Sidiqqi A. Idiopathic chronic eosinophilic pneumonia - a diagnostic conundrum. J Invest Med. 2015;63(2):7

Ali RA, Baldeo C, Chaudhry S, Landa C. Cryoglobulinemia as an idiosyncratic drug reaction of moringa oleifera. J Invest Med. 2015;63(2):47

Baldeo C, Ali RA, Chaudhry S, Khawaja F. Primary cardiac sarcoma presenting as heart failure. J Invest Med. 2015;63(2):13

Baldeo C, Ali RA, House J. Lung cancer presenting as a soft tissue mass. J Invest Med. 2015;63(2):49

Berry AC, Nakshabendi R, Abidali H, Johnson C, Dholaria K, Avalos DJ, Baltz AC. Collagenous Colitis with Mucosal Ulcerations in a Patient Without NSAID or Lansoprazole Use. Annals of Gastroenterology. 2015; (Accepted, In press).

Baidoun F, Chen D, Alkhateeb H, Zblewski D, Elliott M, Hogan W, Litzow M, Al-Kali A. Clinical outcome of patients diagnosed with myelodysplastic syndrome-unclassifiable (mds-u): single center experience. Blood. Dec 2014;124(21):3264

**Presentations**

Al-Saffar F. Effect of positive end-expiratory pressure (peep) on development of upper extremity deep venous thrombosis in mechanically-ventilated medical intensive care (ICU) patients. Poster presentation at: UF College of Medicine Research Day; Jacksonville, FL. May 21, 2015.

Al-Saffar F. Building a scoring model to predict the risk of endovascular device infection in patients with staphylococcus aureus bacteremia: results from (predict-sab) study. Poster presentation at: UF College of Medicine Research Day; Jacksonville, FL. May 21, 2015.

Al-Saffar F. Unanticipated metastatic melanoma concealed in shingles. Poster presentation at: UF College of Medicine Research Day; Jacksonville, FL. May 21, 2015.

Babbar A. Rare presentation of a parathyroid carcinoma associated with brown tumors. Poster presentation at: UF College of Medicine Research Day; Jacksonville, FL. May 21, 2015.

Brookins S. A rare case of granulomatous glomerular and tubulo-interstitial nephritis. Poster presentation at: UF College of Medicine Research Day; Jacksonville, FL. May 21, 2015.

Dakkak M. Evaluating predictors of 30-day readmission rates in patients with acute decompensated heart failure. Poster presentation at: UF College of Medicine Research Day; Jacksonville, FL. May 21, 2015.

Dakkak M. Takotsubo cardiomyopathy secondary to theophylline toxicity - old drug with new side effect. Poster presentation at: UF College of Medicine Research Day; Jacksonville, FL. May 21, 2015.

Gupta E. A unique case of bronchial carcinoid mimicking as asthma. Poster presentation at: UF College of Medicine Research Day; Jacksonville, FL. May 21, 2015.

Gupta E. Effect of aspirin on prevention of deep venous thrombosis in critically ill mechanically ventilated patients. Poster presentation at: UF College of Medicine Research Day; Jacksonville, FL. May 21, 2015.

Gupta E. Rare elusive diagnosis of nk cell lymphoma. Poster presentation at: UF College of Medicine Research Day; Jacksonville, FL. May 21, 2015.

Hritani A. Adderall xr and peripheral arterial vasculopathy: a review of the literature and a case report. Poster presentation at: UF College of Medicine Research Day; Jacksonville, FL. May 21, 2015.

Ibrahim S. Hemoconcentration as marker of decongestion in patients with acute decompensated heart failure. Poster presentation at: UF College of Medicine Research Day; Jacksonville, FL. May 21, 2015.

Ibrahim S. Controlling atrial fibrillation by atrial flutter ablation in the presence of la enlargement: a ten-year review. Poster presentation at: UF College of Medicine Research Day; Jacksonville, FL. May 21, 2015.

Kunjal R. Favorable lipoprotein profile in hiv-infected patients with end-stage renal disease without lipid lowering therapy. Poster presentation at: UF College of Medicine Research Day; Jacksonville, FL. May 21, 2015.

McCurdy K. Case of a left atrial mass caused by transesophageal migration of a hypodermic needle in the left atrium. Poster presentation at: UF College of Medicine Research Day; Jacksonville, FL. May 21, 2015.

McCurdy K. Foreign body aspiration masquerading as asthma. Poster presentation at: UF College of Medicine Research Day; Jacksonville, FL. May 21, 2015.

McCurdy K. Ultrasound applications in medical education: can residents be trained to use ultrasound examination to predict central venous pressure? Poster presentation at: UF College of Medicine Research Day; Jacksonville, FL. May 21, 2015.

Samuel J. 4-liter large volume bowel preparation versus split dose bowel preparation impact on adenoma detection rate, surveillance colonoscopy and adequacy of bowel preparation in a safety net hospital. Poster presentation at: UF College of Medicine Research Day; Jacksonville, FL. May 21, 2015.

Thomas S. A rare case of a goblet carcinoid tumor presenting as a small bowel obstruction. Poster presentation at: UF College of Medicine Research Day; Jacksonville, FL. May 21, 2015.

Torres-Miranda D. Chronic kidney disease associated polyarteritis nodosa - report of an unexpected finding. Poster presentation at: UF College of Medicine Research Day; Jacksonville, FL. May 21, 2015.

Torres-Miranda D. Insulin deficiency and thyroid excess: two masquerading endocrine emergencies: a case report. Poster presentation at: UF College of Medicine Research Day; Jacksonville, FL. May 21, 2015.

Torres-Miranda D. Normal flora can take your breath away and mess with your brain: lung and brain abscess caused by streptococcus anginosus. Poster presentation at: UF College of Medicine Research Day; Jacksonville, FL. May 21, 2015.

Torres-Miranda D. Rapidly progressive seeding of an aggressive mssa infection in an immunocompetent host with no obvious source - end organ damage from head to bone. Poster presentation at: UF College of Medicine Research Day; Jacksonville, FL. May 21, 2015.

Nakshabendi R. Accuracy of polyp measurement during colonoscopy. Poster presentation at: Digestive Disease Week Annual Meeting; Washington, DC. May 2015.

Nakshabendi R. Factors affecting recurrence rate of colonic polyps after endoscopic mucosal resection (emr). Poster presentation at: Digestive Disease Week Annual Meeting; Washington, DC. May 2015.

Nakshabendi R. Alkaline injuries: how far down can stricturing go? a case report. Poster presentation at: Digestive Disease Week Annual Meeting; Washington, DC. May 2015.

Samuel J. Gastrointestinal manifestations of common variable immunodeficiency disease. Poster presentation at: Digestive Disease Week Annual Meeting; Washington, DC. May 2015.

Al-Saffar F. Effect of positive end-expiratory pressure (peep) on development of upper extremity deep venous thrombosis in mechanically-ventilated medical intensive care unit (icu) patients. Poster presentation at: American Thoracic Society Annual Meeting; Denver, CO. May 2015.

Al-Saffar F. Normal flora can take your breath away and mess with your brain: lung and brain abscess caused by streptococcus anginosus. Poster presentation at: American Thoracic Society Annual Meeting; Denver, CO. May 2015.

Al-Saffar F. Lymphoma-induced vs. drug-related stevens-johnson syndrome and toxic epidermal necrolysis in the icu. Poster presentation at: American Thoracic Society Annual Meeting; Denver, CO. May 2015.

Stemboroski L. Idiopathic chronic eosinophilic pneumonia - a diagnostic conundrum. Poster presentation at: American Thoracic Society Annual Meeting; Denver, CO. May 2015.

Hritani A. A retrospective comparison of transradial and transfemoral approaches for coronary artery bypass graft angiography and intervention. Poster presentation at: Society for Cardiovascular Angiography and Interventions Scientific Session; San Diego, CA. May 2015.

Thomas S. A rare case of goblet cell carcinoid tumor presenting as small bowel obstruction. Poster presentation at: American College of Physicians Annual Meeting; Boston, MA. May 2015.

Tolaymat O. Lupus: an unusual presentation. Poster presentation at: American Federation of Medical Research Eastern Regional Meeting; Washington, DC. April 2015.

Baldeo C. An unresectable primary cardiac sarcoma presenting as heart failure. Poster presentation at: American College of Cardiology Scientific Session; San Diego, CA. March 2015.

Baldeo C. ANCA-negative pauci-immune crescentic glomerulonephritis linked with non small cell carcinoma of the lung. Poster presentation at: National Kidney Foundation Annual Meeting; Dallas, TX. March 2015.

Hritani A. Rare cause for lower extremity pain and vasospasm. Oral presentation at: Florida Chapter American College of Physicians; Orlando, FL. March 2015.

Al-Saffar F. A typical presentation of pin worms mimicking suspected Crohn's disease. Oral presentation at: Florida Chapter American College of Physicians; Orlando, FL. March 2015.

Thomas S. A rare case of paraneoplastic pemphigus masquerading as toxic epidermal necrolysis. Poster presentation at: Florida Chapter American College of Physicians; Orlando, FL. March 2015.

Ali R. Concomitant vitamin c deficiency and therapeutic enoxaparin resulting in massive chest wall hematoma. Poster presentation at: Florida Chapter American College of Physicians; Orlando, FL. March 2015.

Najjar N. An unusual case of hypercapnic respiratory failure. Poster presentation at: Florida Chapter American College of Physicians; Orlando, FL. March 2015.

Samuel J. Primary Leiomyosarcoma of inferior vena cava extending into the right atrium and ventricle. Poster presentation at: American Federation of Medical Research Southern Regional Meeting; New Orleans, LA. February 2015.

- Gupta E. Rare elusive diagnosis of NK cell Lymphoma. Poster presentation at: American Federation of Medical Research Southern Regional Meeting; New Orleans, LA. February 2015.
- Babbar A. Rare presentation of a parathyroid carcinoma associated with brown tumors. Poster presentation at: American Federation of Medical Research Southern Regional Meeting; New Orleans, LA. February 2015.
- Al-Saffar F. Predicting the need for upfront dual therapy in pulmonary arterial hypertension. Poster presentation at: American Federation of Medical Research Southern Regional Meeting; New Orleans, LA. February 2015.
- Al-Saffar F. Diagnosis of pseudo-pulmonary emboli with endobronchial ultrasound. Poster presentation at: American Federation of Medical Research Southern Regional Meeting; New Orleans, LA. February 2015.
- Al-Saffar F. Pin worms infection presenting as Crohn's disease. Poster presentation at: American Federation of Medical Research Southern Regional Meeting; New Orleans, LA. February 2015.
- Nakshabendi R. Hepatic encephalopathy as the presentation of congenital spleno-renal shunt in the absence of hepatic cirrhosis. Poster presentation at: American Federation of Medical Research Southern Regional Meeting; New Orleans, LA. February 2015.
- Hritani A. Multiple bilateral kidney infarcts as initial presentation of paroxysmal atrial fibrillation. Poster presentation at: American Federation of Medical Research Southern Regional Meeting; New Orleans, LA. February 2015.
- Hritani A. Global stress-induced cardiomyopathy with left and right ventricular dysfunction in the setting of severe chronic obstructive pulmonary disease (COPD) exacerbation. Poster presentation at: American Federation of Medical Research Southern Regional Meeting; New Orleans, LA. February 2015.
- Ibrahim S. An unusual case of coinciding anomalous coronary artery and papillary fibroelastoma. Poster presentation at: American Federation of Medical Research Southern Regional Meeting; New Orleans, LA. February 2015.
- Ibrahim S. Controlling atrial fibrillation by atrial flutter ablation in the presence of Ia enlargement. Poster presentation at: American Federation of Medical Research Southern Regional Meeting; New Orleans, LA. February 2015.
- Ibrahim S. Hemoconcentration as a marker of decongestion in the management of acute decompensated heart failure and its role as a predictor for readmission. Oral presentation at: American Federation of Medical Research Southern Regional Meeting; New Orleans, LA. February 2015.
- Geffen JB. A type II choledocal cyst presenting as pancreatic mass. Poster presentation at: American Federation of Medical Research Southern Regional Meeting; New Orleans, LA. February 2015.
- Ali RA. Idiopathic chronic eosinophilic pneumonia - a diagnostic conundrum. Oral presentation at: American Federation of Medical Research Southern Regional Meeting; New Orleans, LA. February 2015.
- Ali RA. Cryoglobulinemia as an idiosyncratic drug reaction of moringa oleifera. Poster presentation at: American Federation of Medical Research Southern Regional Meeting; New Orleans, LA. February 2015.
- Baldeo C. Primary cardiac sarcoma presenting as heart failure. Oral presentation at: American Federation of Medical Research Southern Regional Meeting; New Orleans, LA. February 2015.
- Baldeo C. Lung cancer presenting as a soft tissue mass. Poster presentation at: American Federation of Medical Research Southern Regional Meeting; New Orleans, LA. February 2015.
- Minocha V. The association of serum albumin and glycated hemoglobin with all cause mortality in patients with breast cancer. Poster presentation at: San Antonio Breast Cancer Society Meeting; San Antonio, TX. December 2014.
- Baidoun F. Clinical outcome of patients diagnosed with myelodysplastic syndrome-unclassifiable (mds-u): single center experience. Poster presentation at: American Society of Hematology Meeting; San Francisco, CA. December 2014.
- Hritani A. Rare cause for lower extremities pain. Poster presentation at: Pain Society of the Carolinas Meeting; Charleston, SC. December 2014.
- Baldeo C. A case of cardiac sarcoma presenting as heart failure. Poster presentation at: Duval County Medical Society Annual Meeting; Jacksonville, FL. December 2014.
- Baldeo C. Lung cancer presenting as a soft tissue mass. Poster presentation at: Duval County Medical Society Annual Meeting; Jacksonville, FL. December 2014.



- Geffen JB. Type II choledocal cyst presenting as pancreatic mass. Poster presentation at: Duval County Medical Society Annual Meeting; Jacksonville, FL. December 2014.
- Ali RA. Familial adenoma polyposis-what is appropriate screening. Poster presentation at: Duval County Medical Society Annual Meeting; Jacksonville, FL. December 2014.
- Ali RA. Cryoglobulinemia presenting as an idiosyncratic reaction to moringa oleifera. Poster presentation at: Duval County Medical Society Annual Meeting; Jacksonville, FL. December 2014.
- Ali RA. Pulmonary edema in end stage renal disease obscuring the diagnosis of idiopathic chronic eosinophilic pneumonia. Poster presentation at: Duval County Medical Society Annual Meeting; Jacksonville, FL. December 2014.
- Dakkak M. Patients with left ventricular function improvement after biventricular ICD implant have a persistent risk of ventricular tachycardia or fibrillation. Poster presentation at: American Heart Association Meeting; Chicago, IL. November 2014.
- Gupta E. Predictors of post-operative myocardial infarction in patients with previous myocardial infarction undergoing major noncardiac surgery: analysis of 30-day follow up data from the ACS-NSQIP. Poster presentation at: American Heart Association Meeting; Chicago, IL. November 2014.
- Brookins S. Case report of a rare finding of Sarcoid Granulomatous Glomeruli Nephritis. Poster presentation at: American Society of Nephrology Meeting; Philadelphia, PA. November 2014.
- Ibrahim S. An unusual case of coinciding anomalous coronary artery and papillary fibroela. Poster presentation at: Southern Medical Association Meeting; Destin, FL. October 2014.
- Ali RA. Endobronchial carcinoid with postobstructive pneumonia obscuring the diagnosis of granulomatosis with polyangitis. Poster presentation at: American College of Chest Physicians Annual Meeting; Austin, TX. October 2014.
- Al-Saffar F. Endobronchial ultrasound (EBUS) to the rescue when CT pulmonary angiography (CTPA) fails you. Poster presentation at: American College of Chest Physicians Annual Meeting; Austin, TX. October 2014.
- Dakkak M. Broncholithiasis presenting as fever of unknown origin. Poster presentation at: American College of Chest Physicians Annual Meeting; Austin, TX. October 2014.
- Najjar N. Diagnostic accuracy of transesophageal echocardiography in suspected central pulmonary embolism: a meta-analysis. Poster presentation at: American College of Chest Physicians Annual Meeting; Austin, TX. October 2014.
- Najjar N. An unusual case of hypercapnic respiratory failure. Poster presentation at: American College of Chest Physicians Annual Meeting; Austin, TX. October 2014.
- Mourad B. A case of LIP pleural effusion in HIV. Poster presentation at: American College of Chest Physicians Annual Meeting; Austin, TX. October 2014.
- Mourad B. Black lungs in a crack enthusiast. Poster presentation at: American College of Chest Physicians Annual Meeting; Austin, TX. October 2014.
- Samuel J. Colonoscopy or CT colonography: patient preference for colorectal cancer screening. Poster presentation at: American College of Gastroenterology Meeting; Philadelphia, PA. October 2014.
- Nakshabendi R. A case of plunging GIST presenting as intermittent dysphagia. Poster presentation at: American College of Gastroenterology Meeting; Philadelphia, PA. October 2014.
- Nakshabendi R. Two cases of primary malignant melanoma of the colorectal area. Poster presentation at: American College of Gastroenterology Meeting; Philadelphia, PA. October 2014.
- Nakshabendi R. Sigmoid colon polyp as initial presentation of metastatic papillary renal cell carcinoma. Poster presentation at: American College of Gastroenterology Meeting; Philadelphia, PA. October 2014.
- Dakkak M. Unusual presentation of tuberculosis. Poster presentation at: Southern Hospital Medicine Annual Mtg; Atlanta, GA. October 2014.
- Al-Saffar F. Takotsubo's cardiomyopathy after normal delivery: a literature review "a normal delivery can still break your heart". Poster presentation at: Southern Hospital Medicine Meeting; Atlanta, GA. October 2014.
- Issa R, Baidoun F, Kanar O. Hemodynamic instability from vitamin C deficiency. Poster presentation at: Southern Hospital Medicine Meeting; Atlanta, GA. October 2014.

Issa R, Baidoun F, Kanar O. K2 (synthetic marijuana) induced altered mental status and renal insufficiency. Poster presentation at: Southern Hospital Medicine Meeting; Atlanta, GA. October 2014.

Ibrahim S. Controlling atrial fibrillation by atrial flutter ablation in the presence of LA enlargement. Poster presentation at: Southern Hospital Medicine Meeting; Atlanta, GA. October 2014.

Ibrahim S. Hemoconcentration as a marker of decongestion in patients with acute compensated heart failure. Poster presentation at: Southern Hospital Medicine Meeting; Atlanta, GA. October 2014.

Gupta E. Bronchial carcinoid mimicking as asthma. Poster presentation at: Southern Hospital Medicine Meeting; Atlanta, GA. October 2014. 3rd place winner.

Baldeo C. Pulmonary tuberculosis in an HIV negative patient with sickle cell trait. Poster presentation at: Southern Hospital Medicine Meeting; Atlanta, GA. October 2014.

Baldeo C. Dyspnea on exertion in an otherwise healthy male. Poster presentation at: Southern Hospital Medicine Meeting; Atlanta, GA. October 2014.

Al-Saffar F. Use of EBUS to evaluate endovascular lesions in pulmonary arteries- a systematic review. Poster presentation at: International Lung Cancer Congress Meeting; Huntington Beach, CA. August 2014.

Nakshabendi R. Effects of treatment with immunomodulators and biologic agents on sleep health in inflammatory bowel disease patients. Poster presentation at: Florida Chapter American College of Physicians; Fort Lauderdale, FL. August 2014.

Tariq K. Efficacy of neoadjuvant cisplatin and oral capecitabine in triple-negative breast cancers: a pilot study first. Poster presentation at: Florida Chapter American College of Physicians; Fort Lauderdale, FL. August 2014.

Cerda M. Hemoconcentration as a marker of decongestion in patients with acute decompensated heart failure. Poster presentation at: Florida Chapter American College of Physicians; Fort Lauderdale, FL. August 2014.

Nakshabendi R. A rare case of primary colorectal melanoma. Poster presentation at: Florida Medical Association Annual Meeting; Orlando, FL. July 2014.

## HONORS AND AWARDS

Khadeeja Esmail, MD	Intern of the Year
Amit Babbar, MD	Resident of the Year
Cristian Landa, MD	Teacher of the Year
Saif Ibrahim, MD	Best Conference Attendance
Saif Ibrahim, MD	Procedure Completion
Farah Al-Saffar, MD	ACP Resident of the Year

Melissa Dakkak, DO; Ryan Kunjal, MD and Taylor Palfrey, MD competed for the American College of Physicians, Florida Chapter - Doctor's Dilemma™ State Team.

Amit Babbar, MD has been awarded the resident UF College of Medicine Exemplary Teachers Award.

Cristian Landa, MD was the recipient of the UF College of Medicine Excellence in Student Education Award.

Saif Ibrahim, MD was awarded the Malcolm T. Foster, Jr., MD Scholarship Award.

**ENDOWMENTS AND GIFTS**

The Anne and Max Michael, Jr. Education Fund, Established 2006, by Mrs. Anne Michael

**CLASS OF 2015 DESTINATIONS****Chief Medical Residents**

Jason Bellardini, MD  
Jean Touchan, MD

**Professional status**

Pulmonary CC Fellowship  
Cardiology Fellowship

**Location**

University of Florida Jacksonville  
University of Kentucky

**Preliminary Residents**

Leslie Lester, DO  
Omar Moore, MD  
W. James Plante II, MD

Anesthesiology Residency  
Neurology Residency  
Neurology Residency

Georgia Regents University  
University of Florida Jacksonville  
University of Florida Jacksonville

**Categorical Residents**

Tracy Ashby, DO  
Amit Babbar, MD  
Sharica Brookins, MD  
Bilkisu Gaye, MD  
Saif Ibrahim, MD  
Kaitlin McCurdy, MD  
Vinay Minocha, MD  
Bashar Mourad, DO  
Jesse Onyenekwe, MD  
Kavita Pal, MD  
Dhruv Panchal, MD  
Virin Ramoutar, MD  
Khurram Tariq, MD

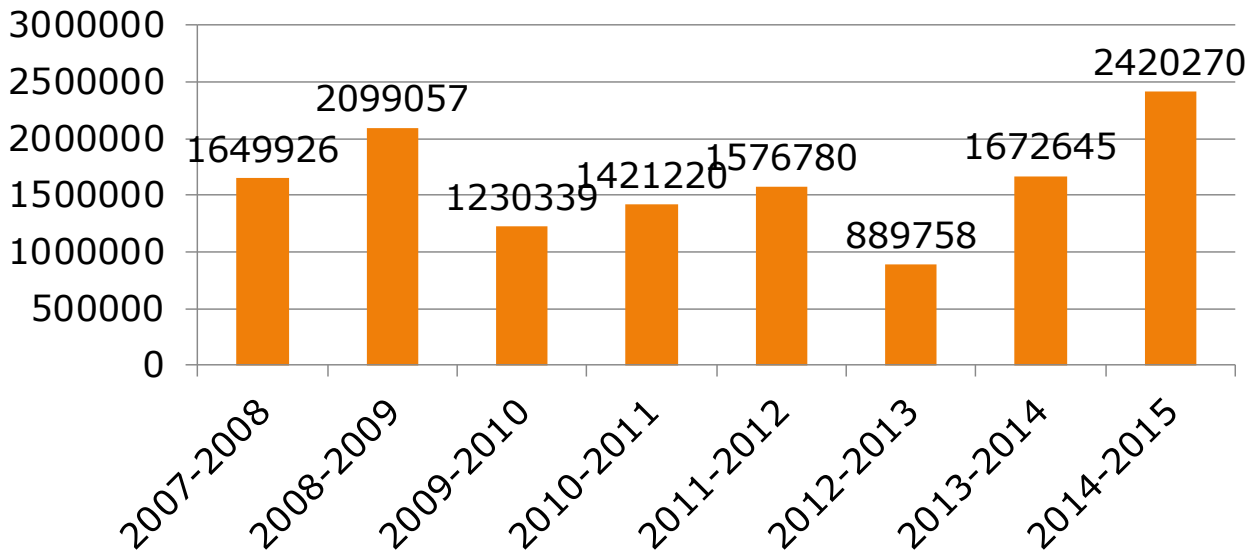
Chief Medical Resident  
Pulmonary CC Fellowship  
Nephrology Fellowship  
Hospital Medicine  
Cardiology Fellowship  
Chief Medical Resident  
Medical Oncology Fellowship  
Pulmonary CC Fellowship  
Pulmonary CC Fellowship  
Hospital Medicine  
Hospital Medicine  
Infectious Disease Fellowship  
Hematology Oncology Fellowship

University of Florida Jacksonville  
University of Florida Jacksonville  
Vanderbilt University  
Redmond MC, Rome, GA  
University of Florida Jacksonville  
University of Florida Jacksonville  
University of Florida Jacksonville  
Mt. Sinai-St. Luke's MC, NY, NY  
Henry Ford Hospital, Detroit, MI  
University of Virginia  
Lakeland, FL  
University of Florida Jacksonville  
Georgia Regents University

**DEPARTMENT RESEARCH**  
**ACADEMIC YEAR 2015 (7/14 - 6/15)**

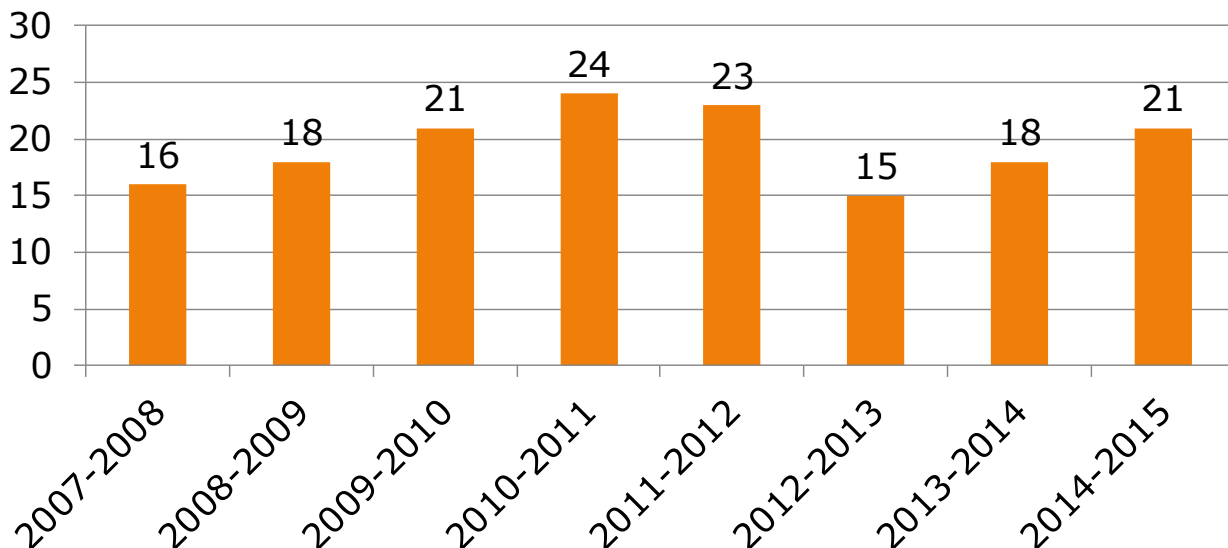
The faculty in the Department of Medicine continue to obtain research awards and train future investigators; an important aspect of the University of Florida College of Medicine-Jacksonville’s mission. Trends in external funding for the past seven years are shown in **Figure 1**.

**Total Grant Revenue**

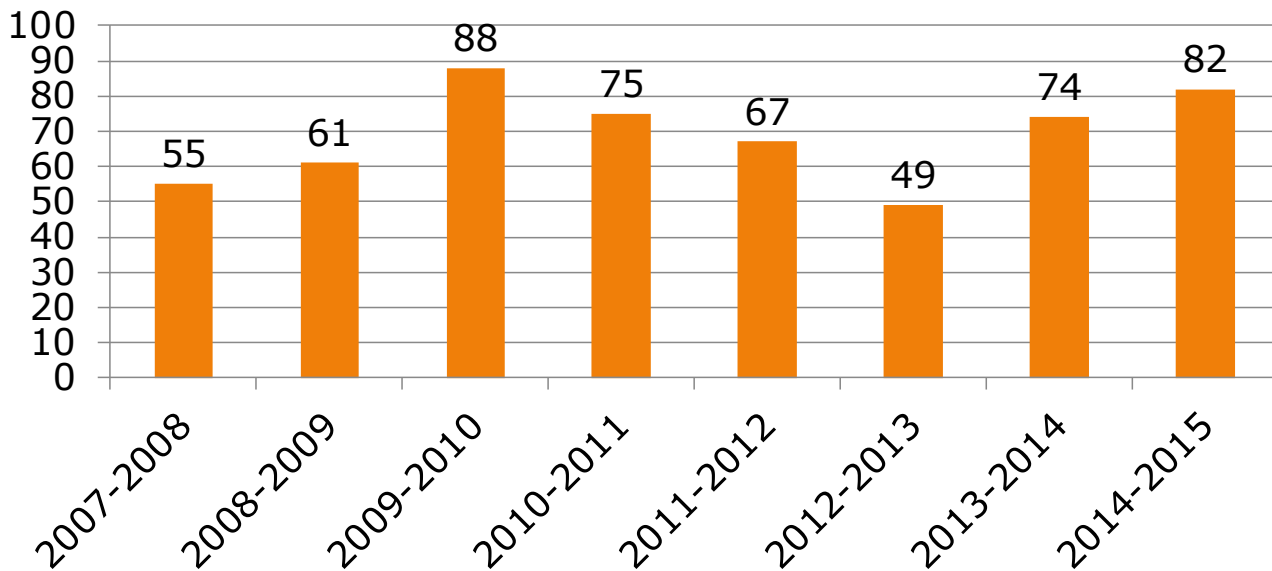


External funding from federal, state, industry and foundation sources increased 44.6% this fiscal year compared to last. This correlated with a slight increase in the number of funded investigators (from 18 investigators last fiscal year to 21 investigators this fiscal year) (**Figure 2**) and a significant increase in the number funded projects (from 74 projects last fiscal year to 82 this fiscal year) (**Figure 3**).

**# Funded Investigators**



## # Funded Projects



Several faculty members in the Department of Medicine have basic/translational science projects in the Medical Research Building. **Michael Haas, Ph.D.** (Endocrinology) is investigating molecular mechanisms that regulate expression of genes involved in cholesterol transport and oxidative and endoplasmic reticulum stress in endothelial cells. **Kent Wehmeier, M.D.** (Endocrinology) is investigating cholesterol metabolism and transport in osteocytes. **Charles Heilig, M.D.** (Nephrology and Hypertension) is examining the regulation of glucose transporter 1 expression by mechano-growth factor as well as examining the role of glucose transporters in liver cancer. **Leighton James, M.D.** (Nephrology and Hypertension) is examining the roles of various growth factors in diabetic kidney disease.

Residents and sub-specialty fellows in the Department of Medicine are assigned a mentor and participate in basic, translational, epidemiological, or clinical research. Three residents and fellows in the Department of Medicine received Deans Fund Research Grant funding, enabling them to carryout research projects under the mentorship of faculty. This has increased the scholarly output of our trainees. At Research Day, 28% of the presentations were from residents and sub-specialty fellows in the Department of Medicine. **Dr. Kaitlin McCurdy** and **Dr. Saif Ibrahim** placed fourth and sixth place, respectively, in the oral platform competition. **Dr. Lydia Engwenyu** received the first place prize and **Dr. Kamaldeep Singh** received the second place prize for their poster presentations. These great outcomes are in part due to the desire and hard work of their faculty mentors. **Michael Haas, Ph.D.** has also worked with interns from the **Florida State College of Jacksonville Biotechnology** program.

**DIVISION OF CARDIOLOGY**  
**ACADEMIC YEAR 2015 (7/14 - 6/15)**

## Highlights

- Brought CT surgery under Cardiology. Expanded the CT surgery program by hiring PA's, CVICU Co-ordinator and assisted with bringing in new OR Heart team members. Opened new 17 bed CVICU. Volume of CT surgery cases has gone up by 60% in the last year.
- Fully opened Northside Practice. Expanded services to the North Campus offering patients Invasive and Non-invasive testing as well as office visits.
- Started the TAVR program, 20 cases have been performed with great success.
- Opened Hybrid OR in the Invasive Suite
- Expanded the Peripheral Vascular Program with Dr. Antoun collaborating with UF and non-UF podiatrist and Vascular Surgery performing cases in the Hybrid Room.
- Dr. Patrick Antoun, new Medical Director of CCU, has put programs in place that have improved the communication, among the physician/fellows and nurses in the CCU as well as improved the efficiency and effectiveness of daily Rounds.
- Dr. Pirris took over the leadership of the Valve Program/Committee. New processes in place to identify Valvular heart Disease patients and have them seen and treated earlier.
- Restructured Emerson office, new staff, new physician assignments to Emerson office
- Continued to expand Cardiovascular Research program to include CT surgery research projects.
- Relocated Cardiovascular Research program to previous Blood Alliance building located by Proton Center.

Cardiology Goals for 2015-16 are as follows:

- Continue to expand CT surgery program, market CT surgery, Dr. Pirris, robotics program, minimally invasive program.
- Continue to expand TAVR program with larger referral base.
- Dr. Leslie Oberst starting Nov. 2015, will work with Radiology to develop a comprehensive Cardiac MR/CT program
- Expand North side services, adding Physicians to North office.
- Work with Podiatry on partnership program for Wound care/Limb Salvage program.
- Continue to promote and expand the Women's Heart Program, with more community events, more outreach programs.
- Completely restructure the Cardiology/CT surgery website/webpages.
- Organize more Physician to physician marketing ventures, with a focus on our High Risk PCI program and CT surgery program
- Develop a Remote Monitoring Program in EP division. Hiring 2<sup>nd</sup> Arrhythmia Nurse.
- Purchase new D-Spec nuclear camera, advance the Cardiac Nuclear Imaging program
- New 4D ECHO systems being purchased for Non-invasive lab, enhance non-invasive testing program

**Education:** The fellowships programs remain competitive and are comfortably in mid review cycles. Our fellows and residents have received several research awards including Dean's grants and several presentations on Research Day. Our post doc research fellows have also received this recognition.

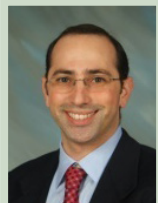
The following initiatives have taken place this year:

- Implemented Monday Morning Report: Mandatory meeting for ALL fellows to discuss important, challenging, complex cases that present to CCU over the weekend or preceding week.
- Created goals and objectives for every clinical and nonclinical rotation
- Increased the number of Board Review/In training exam review sessions to twice a month
- Established a new agreement for an advanced imaging rotation at Mayo

- Increased the number of guest lecture faculty participating in our weekly didactic conference sessions
  - o Established a pulmonary series with Dr. Bajwa (UF – Jax)
  - o Established an advance imaging series with Dr. Shapiro ( Mayo)
  - o Established an advance HF series with Dr. Parag Patel (Mayo)
- Will be integrating a fellow's case session in the Annual Women and Cardiovascular Disease Symposium this coming January 2016

**Research:** Our faculty continues to excel in research, scholarly production and participation in national and international scientific sessions. We have nearly 50 ongoing studies, which range from basic/translational research to large scale clinical trials. These embrace investigator initiated as well as sponsored studies. We have published approximately 40 peer-reviewed manuscripts, numerous abstracts and presentations at local, national and international meetings and several book chapters. We currently hold leadership positions in most major cardiovascular societies and editorial positions in many major cardiovascular journals. We continue to receive consistently increasing extramural funding. Our research staff has also expand to meet the demands of our growing research operations, which this year has included the opening a new cardiovascular research building which hosts a state-of the art thrombosis research laboratory, patient waiting area, clinical visit rooms, and offices for research staff.

### LISTING OF FACULTY MEMBERS



**Dominick Angiolillo, M.D. Ph.D., Associate Professor**

Medical School / Graduation date	The Catholic University of the Sacred Heart Medical School, Italy	1997
Internship/residency and year	The Catholic University of the Sacred Heart Medical School, Italy	1997
Subspecialty training and year	University Hospital of Salamanca, Spain/The Policlinico	1998
	Agostino Gemelli University Hospital, Italy/San Carlos	2003
	University Hospital	



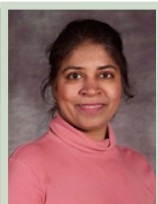
**Theodore Bass, M.D., Professor and Division Chief**

Medical School / Graduation date	Brown University	1976
Internship/residency and year	Mayo Clinic	1979
Subspecialty training and year	Boston University	1981



**Douglas Chapman, M.D., Associate Professor**

Medical School / Graduation date	Chicago Medical School	1984
Internship/residency and year	University of Missouri	1987
Subspecialty training and year	Michael Reese Hospital	1990

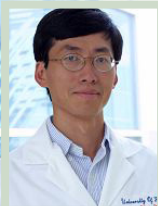


**Sunita Dodani, M.D., M.S., Ph.D., Associate Professor**

Medical School / Graduation date	The Aga Khan University, Pakistan	1992
Subspecialty training and year	Dalhousie University (M.S.)	2002
Subspecialty training and year	University of Pittsburgh (Ph.D.)	2006

**Luis Guzman, M.D., Associate Professor**

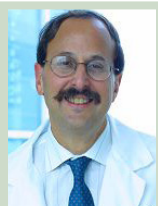
Medical School / Graduation date	University of Buenos Aires, Argentina	1982
Internship/residency and year	Churrucá-Visca Hospital, Argentina	1986
Subspecialty training and year	Instituto Cardiovascular Buenos Aires, Argentina	1989

**Steve Hsu, M.D., Associate Professor**

Medical School / Graduation date	Washington University	1990
Internship/residency and year	Thomas Jefferson University	1993
Subspecialty training and year	Thomas Jefferson University	1997

**Robert Kim, M.D., Assistant Professor**

Medical School / Graduation date	Tufts University School of Medicine – Boston, MA	1998
Internship/residency and year	St. Elizabeth's Medical Center – Boston, MA/ University of MA Medical Center-Worcester, MA	2001 2004
Subspecialty training and year	Dartmouth-Hitchcock Medical Center – Lebanon, NH	2008

**Steven Lavine, M.D., Professor**

Medical School / Graduation date	Temple University	1976
Internship/residency and year	Temple University	1979
Subspecialty training and year	Temple University	1981

**Alan Miller, M.D., Professor**

Medical School / Graduation date	University of Pittsburgh	1966
Internship/residency and year	Mount Sinai	1968
Internship/residency and year	George Washington University	1971
Subspecialty training and year	Cleveland Metropolitan Hospital	1973

**Timothy Paterick, M.D., J.D., M.B.A. Professor**

Medical School / Graduation date	Rush Medical College of Rush University	1984
Internship/residency and year	Mayo Clinic – Rochester	1987
Subspecialty training and year	Mayo Clinic – Rochester	1990
Professional Education	University of Wisconsin (JD)	1993
Professional Education	Edgewood College (MBA)	1996

**Robert Percy, M.D., Associate Professor**

Medical School / Graduation date	University of Mississippi	1973
Internship/residency and year	University of Mississippi	1977
Subspecialty training and year	Joslin Clinic	1979
Subspecialty training and year	Mass General Hospital	1981

**Joel Strom, M.D., M.Eng., Adjunct Professor**

Medical School / Graduation date	State University of New York Upstate Medical University	1970
Internship/residency and year	State University of New York Upstate Medical Center	1973
Subspecialty training and year	Cornell University Medical College	1974
Subspecialty training and year	Albert Einstein College of Medicine	1977



**Gladys Velarde, M.D., Associate Professor**

Medical School / Graduation date	New York University School of Medicine	1992
Internship/residency and year	Columbia Presbyterian Medical Center	1995
Subspecialty training and year	Boston University/Mount Sinai Hospital	1998

**Thomas Wannenburg, M.D., Associate Professor**

Medical School / Graduation date	University of Stellenbosch, South Africa	1982
Internship/residency and year	John Hopkins Bayview Medical Center	1991
Subspecialty training and year	Cardiovascular Disease, Wake Forest University	1994
Subspecialty training and year	Cardiac Electrophysiology, Wake Forest University	2001

**Martin Zenni, M.D., Associate Professor**

Medical School / Graduation date	University of Chicago	1986
Internship/residency and year	Tufts University	1989
Subspecialty training and year	Harvard Medical School	1992

## PUBLICATIONS

### Peer-reviewed manuscripts:

Angiolillo DJ, Jakubowski JA, Franchi F, Rollini F, Bass TA. Reply: elevated serum fibrinogen: an independent link between diabetes mellitus, impaired on-clopidogrel platelet inhibition, and major adverse cardiac events after percutaneous coronary intervention. *J Am Coll Cardiol*. 2015 Apr 28;65(16):1714-5. doi: 10.1016/j.jacc.2014.12.069. PubMed PMID: 25908082.

Aradi D, Kirtane A, Bonello L, Gurbel PA, Tantry US, Huber K, Freynhofer MK, Ten Berg J, Janssen P, Angiolillo DJ, Siller-Matula JM, Marcucci R, Patti G, Mangiacapra F, Valgimigli M, Morel O, Palmerini T, Price MJ, Cuisset T, Kastrati A, Stone GW, Sibbing D. Bleeding and stent thrombosis on P2Y12-inhibitors: collaborative analysis on the role of platelet reactivity for risk stratification after percutaneous coronary intervention. *Eur Heart J*. 2015 Apr 20. pii: ehv104. [Epub ahead of print] PubMed PMID: 25896078.

Pelliccia F, Greco C, Gaudio C, Rosano G, Vitale C, Marazzi G, Rollini F, Angiolillo DJ. Comparison of the pharmacodynamics effects of ranolazine versus amlodipine on platelet reactivity in stable patients with coronary artery disease treated with dual antiplatelet therapy: The ROMAN (RanOlazine vs. aMlodipine on platelet reactivity in stable patients with CAD treated with dual Antiplatelet therapy) study. *J Thromb Thrombolysis*. 2015 Mar 12. [Epub ahead of print] PubMed PMID: 25761430.

Rollini F, Angiolillo DJ. Acute coronary syndromes: applying practice guidelines and defining the unmet need in clinical practice. *Am J Cardiol*. 2015 Mar 14;115(5 Suppl):1A-2A. doi: 10.1016/j.amjcard.2015.01.001. Epub 2015 Jan 8. PubMed PMID: 25728970.

Capodanno D, Angiolillo DJ. Pretreatment with antiplatelet drugs in invasively managed patients with coronary artery disease in the contemporary era: review of the evidence and practice guidelines. *Circ Cardiovasc Interv*. 2015 Mar;8(3):e002301. doi: 10.1161/CIRCINTERVENTIONS.114.002301. PubMed PMID:25717045.

Cavender MA, Scirica BM, Bonaca MP, Angiolillo DJ, Dalby AJ, Dellborg M, Morais J, Murphy SA, Ophuis TO, Tendera M, Braunwald E, Morrow DA. Vorapaxar in Patients With Diabetes Mellitus and Previous Myocardial Infarction: Findings From the Thrombin Receptor Antagonist in Secondary Prevention of Atherothrombotic Ischemic Events-TIMI 50 Trial. *Circulation*. 2015 Mar 24;131(12):1047-53. doi: 10.1161/CIRCULATIONAHA.114.013774. Epub 2015 Feb 13. PubMed PMID: 25681464; PubMed Central PMCID: PMC4365950.

Ueno M, Fujita K, Yamamoto H, Ikeda T, Suga T, Yamaji K, Ikuta S, Kobuke K, Iwanaga Y, Angiolillo DJ, Miyazaki S. Impact of impaired glucose tolerance on clopidogrel response in patients with coronary artery disease. *J Thromb Thrombolysis*. 2015 Jan 30. [Epub ahead of print] PubMed PMID: 25633821.

Schulz-Schüpke S, Byrne RA, Ten Berg JM, Neumann FJ, Han Y, Adriaenssens T, Tölg R, Seyfarth M, Maeng M, Zrenner B, Jacobshagen C, Mudra H, von Hodenberg E, Wöhrle J, Angiolillo DJ, von Merzljak B, Rifatov N, Kufner S, Morath T, Feuchtenberger A, Ibrahim T, Janssen PW, Valina C, Li Y, Desmet W, Abdel-Wahab M, Tiroch K, Hengstenberg C, Bernlochner I, Fischer M, Schunkert H, Laugwitz KL, Schömig A, Mehilli J, Kastrati A; on behalf of the Intracoronary Stenting and Antithrombotic Regimen: Safety And Efficacy of 6 Months Dual Antiplatelet Therapy After Drug-Eluting Stenting (ISAR-SAFE) trial investigators. ISAR-SAFE: a randomized, double-blind, placebo-controlled trial of 6 versus 12 months of clopidogrel therapy after drug-eluting stenting. *Eur Heart J*. 2015 Jan 23. pii: ehu523. [Epub ahead of print] PubMed PMID: 25616646.

Price MJ, Clavijo L, Angiolillo DJ, Carlson G, Caplan R, Teng R, Maya J. A randomised trial of the pharmacodynamic and pharmacokinetic effects of ticagrelor compared with clopidogrel in Hispanic patients with stable coronary artery disease. *J Thromb Thrombolysis*. 2015 Jan;39(1):8-14. doi: 10.1007/s11239-014-1135-9. PubMed PMID: 25305090; PubMed Central PMCID:PMC4300410.

Franchi F, Angiolillo DJ. Novel antiplatelet agents in acute coronary syndrome. *Nat Rev Cardiol*. 2015 Jan;12(1):30-47. doi: 10.1038/nrcardio.2014.156. Epub 2014 Oct 7. PubMed PMID: 25286881.

Rossini R, Musumeci G, Capodanno D, Lettieri C, Limbruno U, Tarantini G, Russo N, Calabria P, Romano M, Inashvili A, Sirbu V, Guagliumi G, Valsecchi O, Senni M, Gavazzi A, Angiolillo DJ. Perioperative management of oral antiplatelet therapy and clinical outcomes in coronary stent patients undergoing surgery. Results of a multicentre registry. *Thromb Haemost*. 2015 Feb;113(2):272-82. doi: 10.1160/TH14-05-0436. Epub 2014 Oct 2. PubMed PMID: 25274620.

Alexopoulos D, Xanthopoulou I, Storey RF, Bliden KP, Tantry US, Angiolillo DJ, Gurbel PA. Platelet reactivity during ticagrelor maintenance therapy: a patient-level data meta-analysis. *Am Heart J*. 2014 Oct;168(4):530-6. doi: 10.1016/j.ahj.2014.06.026. Epub 2014 Jul 11. Review. PubMed PMID: 25262263.

Palmerini T, Calabrò P, Piscione F, De Servi S, Cattaneo M, Maffeo D, Toso A, Bartorelli A, Palmieri C, De Carlo M, Capodanno D, Barozzi C, Tomasi L, Della Riva D, Mariani A, Taglieri N, Reggiani LB, Bianchi R, De Rosa R, Mariani M, Podda G, Génereux P, Stone GW, Angiolillo DJ. Impact of gene polymorphisms, platelet reactivity, and the SYNTAX score on 1-year clinical outcomes in patients with non-ST-segment elevation acute coronary syndrome undergoing percutaneous coronary intervention: the GEPRESS study. *JACC Cardiovasc Interv*. 2014 Oct;7(10):1117-27. doi: 10.1016/j.jcin.2014.04.020. Epub 2014 Sep 17. PubMed PMID: 25240538.

Angiolillo DJ, Jakubowski JA, Ferreiro JL, Tello-Montoliu A, Rollini F, Franchi F, Ueno M, Darlington A, Desai B, Moser BA, Sugidachi A, Guzman LA, Bass TA. Impaired responsiveness to the platelet P2Y<sub>12</sub> receptor antagonist clopidogrel in patients with type 2 diabetes and coronary artery disease. *J Am Coll Cardiol*. 2014 Sep 9;64(10):1005-14. doi: 10.1016/j.jacc.2014.06.1170. PubMed PMID: 25190236.

Angiolillo DJ, Cho JR. Aspirin treatment and outcomes in patients undergoing percutaneous coronary intervention: is there a role for pharmacodynamic testing? *J Am Coll Cardiol*. 2014 Sep 2;64(9):872-4. doi: 10.1016/j.jacc.2014.06.1157. PubMed PMID: 25169170.

Cho JR, Angiolillo DJ. Percutaneous coronary intervention and atrial fibrillation: the triple therapy dilemma. *J Thromb Thrombolysis*. 2015 Feb;39(2):203-8. doi: 10.1007/s11239-014-1132-z. PubMed PMID: 25164314.

Franchi F, Rollini F, Angiolillo DJ. Perspectives on the management of antiplatelet therapy in patients with coronary artery disease requiring cardiac and noncardiac surgery. *Curr Opin Cardiol*. 2014 Nov;29(6):553-63. doi: 10.1097/HCO.000000000000104. PubMed PMID: 25144343.

Franchi F, Hammad JS, Rollini F, Tello-Montoliu A, Patel R, Darlington A, Kraemer DF, Cho JR, DeGroat C, Bhatti M, Taha M, Angiolillo DJ. Role of thromboelastography and rapid thromboelastography to assess the pharmacodynamics effects of vitamin K antagonists. *J Thromb Thrombolysis*. 2014 Aug 17. [Epub ahead of print] PubMed PMID: 25129122.

Hochholzer W, Ruff CT, Mesa RA, Mattimore JF, Cyr JF, Lei L, Frelinger AL 3rd, Michelson AD, Berg DD, Angiolillo DJ, O'Donoghue ML, Sabatine MS, Mega JL. Variability of individual platelet reactivity over time in patients treated with clopidogrel: insights from the ELEVATE-TIMI 56 trial. *J Am Coll Cardiol*. 2014 Jul 29;64(4):361-8. doi: 10.1016/j.jacc.2014.03.051. PubMed PMID: 25060370.

Jakubowski JA, Angiolillo DJ, Zhou C, Small DS, Moser BA, Ten Berg JM, Brown PB, James S, Winters KJ, Erlinge D. The influence of body size on the pharmacodynamic and pharmacokinetic response to clopidogrel and prasugrel: a retrospective analysis of the FEATHER study. *Thromb Res*. 2014 Sep;134(3):552-7. doi: 10.1016/j.thromres.2014.05.019. Epub 2014 May

21. PubMed PMID: 25022828.

Gurbel PA, Bergmeijer TO, Tantry US, ten Berg JM, Angiolillo DJ, James S, Lindahl TL, Svensson P, Jakubowski JA, Brown PB, Duvvuru S, Sundseth S, Walker JR, Small D, Moser BA, Winters KJ, Erlinge D. The effect of CYP2C19 gene polymorphisms on the pharmacokinetics and pharmacodynamics of prasugrel 5-mg, prasugrel 10-mg and clopidogrel 75-mg in patients with coronary artery disease. *Thromb Haemost*. 2014 Sep 2;112(3):589-97. doi: 10.1160/TH13-10-0891. Epub 2014 Jul 10. PubMed PMID: 25008027.

Kado H, Patel AM, Suryadevara S, Zenni MM, Box LC, Angiolillo DJ, Bass TA, Guzman LA. Operator radiation exposure and physical discomfort during a right versus left radial approach for coronary interventions: a randomized evaluation. *JACC Cardiovasc Interv*. 2014 Jul;7(7):810-6. doi: 10.1016/j.jcin.2013.11.026. Epub 2014 Jun 18. PubMed PMID: 24954573.

Diodati JG, Saucedo JF, Cardillo TE, Jakubowski JA, Hennekes C, Effron MB, Lipkin FR, Walker JR, Duvvuru S, Sundseth SS, Fisher HN, Angiolillo DJ. Transferring from clopidogrel loading dose to prasugrel loading dose in acute coronary syndrome patients. High on-treatment platelet reactivity analysis of the TRIPLET trial. *Thromb Haemost*. 2014 Aug;112(2):311-22. doi: 10.1160/TH13-09-0747. Epub 2014 Apr 10. PubMed PMID: 24718367.

Angiolillo DJ, Datto C, Raines S, Yeomans ND. Impact of concomitant low-dose aspirin on the safety and tolerability of naproxen and esomeprazole magnesium delayed-release tablets in patients requiring chronic nonsteroidal anti-inflammatory drug therapy: an analysis from 5 Phase III studies. *J Thromb Thrombolysis*. 2014 Jul;38(1):11-23. doi: 10.1007/s11239-013-1035-4. PubMed PMID: 24368727.

Rollini F, Franchi F, Angiolillo DJ. La chirurgia non cardiaca in pazienti già sottoposti a rivascolarizzazione percutanea alla luce delle nuove linee guida europee. *G Ital Cardiol* 2015 [in press].

Franchi F, Rollini F, Cho JR, Bhatti M, DeGroat C, Ferrante E, Dunn EC, Nanavati A, Carraway E, Suryadevara S, Zenni MM, Guzman LA, Bass TA, Angiolillo DJ. Impact of Escalating Loading Dose Regimens of Ticagrelor in Patients with ST-Segment Elevation Myocardial Infarction Undergoing Primary Percutaneous Coronary Intervention: Results of a Prospective Randomized Pharmacokinetic and Pharmacodynamic Investigation. *JACC Cardiovasc Interv* 2015 [in press].

Cho JR, Rollini F, Franchi F, Muniz-Lozano A, DeGroat C, Bhatti M, Ferrante E, Taha M, Dunn EC, Suryadevara S, Zenni MM, Guzman LA, Bass TA, Angiolillo DJ. Pharmacodynamic Effects of Ticagrelor Dosing Regimens in Patients on Maintenance Ticagrelor Therapy: Results from a Prospective, Randomized, Double-Blind Investigation. *JACC Cardiovasc Interv* 2015 [in press].

Velarde G, Bravo K. Ethnicity and Coronary Artery Disease. The role of HDL – A change in paradigm[Manuscript] Accepted for publication, April 2015 Expert Review Cardiovascular Therapy

Velarde G, Sherazi S, Kramer D, Butterfiel R, Amico, TRN, Steinmetz S, Guzman M, Martin D, Dodani S, Uppuluri S, Smith B. Department of Cardiology University of Florida – College of Medicine Jacksonville. Clinical and Biochemical Markers of Cardiovascular Structure and Function in Women with the Metabolic Syndrome. [Manuscript] Accepted for publication, May 2015 American Journal of Cardiology. AJC-D-15-00789.

Antoun, P et al. Adderall XR and Peripheral Arterial Vasculopathy:A case report and a review of the literature. *Reviews in Vascular Medicine*. March 2015, Vol 3 (1):1-4

Strom JA. Diabetic Heart Disease: Insights from Cardiac Mechanics. *J Am Soc Echocardiogr*. 2014; 27: 489-92.

#### **Abstract presentations:**

Franchi F, Rollini F, Cho JR, Bhatti M, DeGroat C, Tello-Montoliu A, Duarte V, Thanos E, Faz G, Zenni MM, Guzman LA, Ajjan R, Bass TA, Angiolillo DJ. Pharmacodynamic Effects Of Dabigatran In Patients With Coronary Artery Disease On Dual Antiplatelet Therapy With Aspirin And Clopidogrel. AHA congress 2014, Chicago. *Circulation*. 2014;130:A12458.

Franchi F, Rollini F, Cho JR, Bhatti M, DeGroat C, Ferrante E, Dunn EC, Nanavati A, Carraway E, Suryadevara S, Zenni MM, Guzman LA, Bass TA, Angiolillo DJ. Pharmacodynamic Profiles Of Ticagrelor In Patients With ST-Elevation Myocardial Infarction: A Prospective Randomized Comparison Of Escalating Loading Dose Regimens. AHA congress 2014, Chicago. *Circulation*. 2014;130:A14004.

Franchi F, Cho JR, Rollini F, Bhatti M, DeGroat C, Muniz-Lozano A, Taha M, Patel R, Dunn EC, Ferrante E, Zenni MM, Guzman

LA, Bass TA, Angiolillo DJ. Impact Of Potent Oral P2Y12 Inhibiting Therapies on Multiple Platelet Signaling Pathways: Results of a Prospective Ex Vivo Pharmacodynamic Investigation. AHA congress 2014, Chicago. *Circulation*. 2014;130:A16420.

Franchi F, King R, Phoenix F, Rollini F, Cho JR, Bhatti M, DeGroat C, Tello-Montoliu A, Duarte V, Thanos E, Faz G, Zenni MM, Guzman LA, Bass TA, Angiolillo DJ, Ajjan RA. The Effects of Dabigatran on Fibrin Network Structure and Lysis: A Simple Technique to Monitor Efficacy of Treatment? AHA congress 2014, Chicago. *Circulation*. 2014;130:A16668.

Rollini F, Franchi F, Ferrante E, Cho JR, Dunn EC, DeGroat C, Bhatti M, Thanos E, Duarte V, Faz G, Alobaidi Z, Guzman LA, Zenni MM, Bass TA, Angiolillo DJ. Impact of Cigarette Smoking on Levels on Platelet P2Y12 Mediated Platelet Inhibition in Prasugrel Treated Patients: Results of a Pharmacodynamic Study. AHA congress 2014, Chicago. *Circulation*. 2014;130:A13180.

Rollini F, Cho JR, Franchi F, Bhatti M, DeGroat C, Taha M, Muniz-Lozano A, Singh K, Ferrante E, Dunn EC, Zenni MM, Guzman LA, Bass TA, Angiolillo DJ. A Comparative Analysis of Prasugrel versus Ticagrelor on Rates of High On-Treatment Platelet Reactivity Following Switch from Clopidogrel Therapy. AHA congress 2014, Chicago. *Circulation*. 2014;130:A16419.

Cho JR, Rollini F, Franchi F, Muniz-Lozano A, DeGroat C, Bhatti M, Ferrante E, Taha M, Dunn EC, Suryadevara S, Zenni MM, Guzman LA, Bass TA, Angiolillo DJ. Impact Of Ticagrelor Re-load On Pharmacodynamic Profiles In Patients On Maintenance Ticagrelor Therapy. AHA congress 2014, Chicago. *Circulation*. 2014;130:A12493.

Cho JR, Rollini F, Franchi F, Muniz-Lozano A, DeGroat C, Bhatti M, Singh K, Ferrante E, Wilson RE, Dunn EC, Zenni MM, Guzman LA, Bass TA, Angiolillo DJ. A Head-to-Head Pharmacodynamic Comparison Of Prasugrel Versus Ticagrelor In Clopidogrel Treated Patients With Coronary Artery Disease: Results of a Prospective Randomized Study. AHA congress 2014, Chicago. *Circulation*. 2014;130:A13950.

Franchi F, Rollini F, Cho JR, Bhatti M, DeGroat C, Ferrante E, Dunn EC, Nanavati A, Carraway E, Suryadevara S, Zenni MM, Guzman LA, Bass TA, Angiolillo DJ. Impact of Morphine on Pharmacokinetic and Pharmacodynamic Profiles of Ticagrelor in Patients with ST-Segment Elevation Myocardial Infarction Undergoing Primary Percutaneous Coronary Intervention. ACC Scientific Session 2015. *J Am Coll Cardiol*. 2015;65(10\_S).

Rollini F, Franchi F, Cho JR, Bhatti M, DeGroat C, Singh K, Alobaidi Z, Ferrante E, Muniz-Lozano A, Wilson RE, Been L, Zenni MM, Guzman LA, Bass TA, Angiolillo DJ. Pharmacodynamic Effects Of Skipping Ticagrelor Maintenance Dosing Following Loading Dose Administration. ACC Scientific Session 2015. *J Am Coll Cardiol*. 2015;65(10\_S).

Engwenyu LR, Rollini F, Franchi F, Cho JR, Bhatti M, DeGroat C, Alobaidi Z, Ferrante E, Jakubowski J, Sugdiachi A, Zenni MM, Guzman LA, Bass TA, Angiolillo DJ. Impact of Chronic Kidney Disease on Platelet P2Y12 Receptor Signaling in Patients with Diabetes Mellitus. ACC Scientific Session 2015. *J Am Coll Cardiol*. 2015;65(10\_S).

Angiolillo DJ, Bhatt D, Steg P, Stone G, White H, Gibson CM, Hamm C, Price M, Prats J, Liu T, Day J, Mahaffey K, Harrington R. Impact of cangrelor overdosing on bleeding complications in patients undergoing percutaneous coronary intervention: insights from the CHAMPION trials. ACC Scientific Session 2015. *J Am Coll Cardiol*. 2015;65(10\_S).

Velarde G, Bravo K, Ozaki, Asuka, et al. HDL in Acute Coronary Events in Black Americans. University of Florida Health, Jacksonville, FL. Abstract American College of Cardiology, San Diego CA. March 2015

Velarde G. Disparities in Lipid Management; Do Current Guidelines Apply?; National Forum for Heart disease and Stroke reduction. San Diego CA, March 2015

Velarde G. The Need to Address Disparities; ACC Prevention Council Meeting, American College of Cardiology 15 Meeting San Diego, March 2015

### **Book chapters:**

Francesco Franchi, Dominick J Angiolillo. Overview of Antiplatelet Therapy for Myocardial Infarction. In Morrow AL (ed): *Myocardial Infarction: A Companion to Braunwald's Heart Disease*. Elsevier, 2015 (in press).

Tinsley J, Velarde G, Delos Santos Marci. Pharmacotherapy Considerations in Cardiovascular Disease in Women: Therapeutic Implications for Cardiovascular Disease. In: *Management of Cardiovascular Disease in Women*. Mieszczaczanska H, Velarde G (ed.), Springer, 2014: pp: 427-447.

Darlington A, Green J, Velarde G. Heart Failure and Pulmonary Hypertension in Women. In: *Management of Cardiovascular Disease in Women*. Mieszczaczanska H, Velarde G (ed.), Springer, 2014: pp: 155-173.

Antonetti I, Velarde G. Impact of Diabetes Mellitus and the Metabolic Syndrome on the Female Heart In: Management of Cardiovascular Disease in Women. Mieszczaczanska H, Velarde G (ed.), Springer, 2014: pp:265-286.

### CLINICAL ACTIVITIES

<b>Outpatient Activity</b>	<b>AY 14/15</b>
Physician clinic visits	14,189
Cardiac ultrasounds	10,474
Cardiac nuclear studies	1,441
EKGs	59,439
Stress tests	2,254
Heart caths	2,434
EP procedures	1,159
Cardiac rehab visits	2,237
TAVR	16
*Attendings Only: Jacksonville Clinic=7959, Lake Shore=1536, Emerson=1171, St Marys =2991, Northside = 532	

### CONTRACTS AND GRANTS

<b>Principal Investigator</b>	<b>Study Title</b>	<b>Project Period</b>	<b>Sponsor</b>	<b>Award Amount</b>
Angiolillo, D	Eval of Switching from Prasugrel to Ticagrelor	2014-2016	IIS Grant	\$396,125.00

**DIVISION OF ENDOCRINOLOGY, DIABETES AND METABOLISM**  
**ACADEMIC YEAR 2015 (7/14 - 6/15)**

## Highlights

The Division of Endocrinology, Diabetes and Metabolism had a year of sustained change and development in all areas of the academic mission of the University of Florida. Clinically, major events included expansion of clinical services geographically and provision to a broader audience. The endocrinology faculty initiated in-vitro and clinical investigations into hormonal action with acquisitions of new faculty and personnel. Academically, the Division submitted multiple manuscripts, delivered multiple scholarly presentations and contributed to the University's educational mission.

**Patient care:** The division provided inpatient and outpatient consultation at the University of Florida College of Medicine-Jacksonville campus and Emerson Medical Plaza to faculty of the University and referring physicians in the northeast Florida/southern Georgia region and beyond. With the opening of the UF Northside campus endocrinology services extended to a broader area of the First Coast. The core clinical faculty of the Division included Dr. Joe Chohade, Dr. Claudia Gragnoli, Dr. Arshag Mooradian, Dr. Mae Sheikh-Ali, and Dr. Kent Wehmeier. The division addressed clinical endocrinology problems related to hypothalamus, pituitary, thyroid, pancreas, adrenal and sex hormone gland dysfunction. Patients with metabolic disorders including diabetes mellitus, metabolic syndrome, obesity, anorexia, hypercholesterolemia, calcium and metabolic bone diseases such as osteoporosis and vitamin D deficiency were evaluated and treated. The division's main clinical operations occurred at UF Endocrinology and Diabetes at Emerson Medical Plaza. The number and variety of consultations continued to rise. Patients were also evaluated at the UF Health-Jacksonville Ambulatory Care Center (ACC). Dr. Chohade, Dr. Gragnoli, Dr. Sheikh-Ali and Dr. Wehmeier performed analyses of the glucose monitoring data, obtained by continuous glucose monitoring to make recommendations regarding diabetes management. Diabetes care has matured with the partnering of outpatient diabetes education with the Division of Endocrinology. Meredith Smith, MS, RD, LD, provides onsite education at the UF Emerson location for diabetes management, carbohydrate counting and medical nutrition therapy (MNT.) Dr. Chohade and Dr. Sheikh-Ali both utilized ultrasound guidance for the evaluation of patients with thyroid nodules, and thyroid cancer to provide comprehensive care to patients with thyroid disease.

A unique collaboration with the UF College of Medicine-Jacksonville's Department of Surgery, Radiology and Pathology has enhanced the care of patients with thyroid and parathyroid disease. Through the discussion and implementation of diagnostic and treatment protocols, the care of these patients has been standardized to better evaluate outcomes and focus on patients with more challenging management issues. A second collaboration continued with the Departments of Neurosurgery, Otolaryngology, Pathology, Radiation Oncology, and Radiology. Both collaborations were coordinated through Dr. Sheikh-Ali.

The dynamic testing clinic at UF Endocrinology and Diabetes at Emerson Medical Plaza has enhanced the evaluation of adrenal and pituitary disease.

On the inpatient service, more patients were served by endocrinology consultation. The division also presented evaluation and management techniques in the areas of diabetes, thyroid disease and osteoporosis to UF Family Practice clinics to facilitate optimal care of patients with these conditions.

Leading the charge for better inpatient diabetes care the division participated in the Diabetes Steering Committee. This multidisciplinary body comes together to discuss common issues in glucose control. Strategies to improve outcomes are discussed and implemented.

**Education:** The Endocrinology Fellowship continues to maintain its ACGME accreditation, under the direction of Program Director, Dr. Kent Wehmeier and Associate Program Director, Dr. Mae Sheikh-Ali. Fellows Dr. Harshit Shah, from Loma Linda, and Dr. William Kurban, from Louisiana State University, joined

the Division in July 2013 and completed their fellowship. Dr. Ayham Chamseddin and Dr. Monica Plazarte began July 1, 2014 and have been an exceptional and productive additions to the division. All four fellows have made substantive contributions to the clinical care, education and research mission of the division. In resident physician education, Dr. Wehmeier continued as rotation director of relevant educational programs for Endocrinology. He is the primary liaison between the Core Residency Program and the Division, and is a member of the Resident Education Committee. The faculty members and fellows participate in teaching rounds in the clinic and in conferences to enhance the experience of the rotating residents.

In the educational program of University of Florida, Dr. Chehade, Dr. Sheikh-Ali and Dr. Wehmeier are in preceptor clinics in Endocrinology and coordinate lectures for the University of Florida medical students and residents in medicine and emergency medicine. The division's Endocrinology Grand Rounds provide an avenue for speakers at UF Jacksonville and Gainesville to share knowledge and enhance collaboration between various disciplines at UF. Dr. Wehmeier completed the Medical Education Research Certification sponsored by the Association of American Medical Colleges.

**Research:** Strides have been made in making clinical research more attractive to industry and to potential subjects. Under the guidance of division members, the awards and numbers of subjects have continued to grow. Additional research staff has been added to grow the division's efforts. The basic science research lab continues to be a place of learning and scholarly activity. Investigations regarding the effects of multiple hormones on the expression of the most important protein in the high density lipoprotein (HDL) particle, Apo AI, and the involvement of endoplasmic reticulum (ER) stress and oxidative stress in coronary artery disease continue to reveal critical insights. The division made a strong showing at the University of Florida College of Medicine-Jacksonville Research Day. All four fellows had poster presentations displaying their research at national meetings, including the American Association of Clinical Endocrinology and the Endocrine Society. Four investigator-initiated clinical trials are also in the process of studying topics in thyroid disease and macronutrient metabolism.

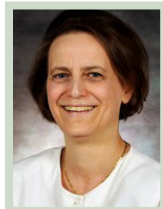
**Philanthropy:** The Division members have been the recipients of many gifts. In the spirit of giving back, the members have contributed of their time, effort and resources to the underserved and to children in Jacksonville, as well as overseas.

### LISTING OF FACULTY MEMBERS



**Joe Chehade, M.D., Associate Professor**

Medical School / Graduation date	St. Joseph University School of Medicine, Beirut-Lebanon	1992
Internship/residency and year	Staten Island University Hospital	1997
Subspecialty training and year	Saint Louis University School of Medicine	1997



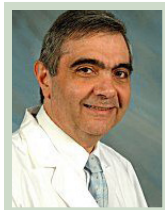
**Claudia Gagnoli, M.D., Ph.D., Associate Professor**

Graduate School/Graduation date	U. La Sapienza of Rome, Italy	1992
Internship/residency and year	U. La Sapienza of Rome, Italy	1998
Internship/residency and year	U. La Sapienza of Rome, Italy	2003

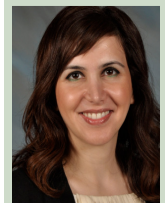


**Michael Haas, Ph.D., Research Associate Professor**

Graduate School/Graduation date	University of Nebraska Medical Center	1991
Post-Graduate Training and year	McArdle Laboratory for Cancer Research	1994

**Arshag D. Mooradian, M.D., Professor and Chairman, Department of Medicine**

Medical School / Graduation date	American University of Beirut	1980
Internship/residency and year	American University of Beirut	1982
Subspecialty training and year	University of Minnesota	1985

**Mae Sheikh-Ali, M.D., Associate Professor**

Medical School / Graduation date	Damascus University School Medicine	1999
Internship/residency and year	Drexel University College Of Medicine	2005
Subspecialty training and year	Mayo Clinic, Jacksonville, Florida	2007

**Kent Wehmeier, M.D., Associate Professor and Division Chief**

Medical School / Graduation date	University of Missouri-Columbia	1988
Internship/residency and year	Barnes-Jewish Hospital, Washington University	1991
Subspecialty training and year	Saint Louis University School of Medicine	1993

## PUBLICATIONS

### Monographs:

Shah Harshit, **Sheikh-Ali M.**, Update Thyroid Function Testing. Epocrates-BMJ point of care. October 2014.

### Publications:

Parseghian, S, Onstead-Haas, LM, Wong, NCW., **Mooradian, AD**, and **Haas, MJ**. 2014. Inhibition of apolipoprotein A-I Gene Expression by Tumor Necrosis Factor Alpha in HepG2 Cells: Requirement for c-jun. *Journal of Cellular Biochemistry*. 115/2: 253-260. <http://onlinelibrary.wiley.com/doi/10.1002/jcb.24656/pdf>

**Mooradian, AD, Haas, MJ** 2014. The effect of nutritional supplements on serum high density lipoprotein cholesterol and apolipoprotein A-I. *American Journal of Cardiovascular Drugs*. 14:253-274, 2014. [http://download.springer.com/static/pdf/445/art%253A10.1007%252Fs40256-014-0068-1.pdf?auth66=1398531216\\_c8d6ef0f732a0119f50e77907e35d4d9&xt=.pdf](http://download.springer.com/static/pdf/445/art%253A10.1007%252Fs40256-014-0068-1.pdf?auth66=1398531216_c8d6ef0f732a0119f50e77907e35d4d9&xt=.pdf)

**Haas, MJ**, Naem, E, Onstead-Haas, LM, Gladysz, M, Mesliniene, S, Wong, NCW, and **Mooradian, AD**. 2014. Induction of apolipoprotein A-I gene expression by extracts from black seed (*Nigella sativa*). *Pharmaceutical Biology*. 52:1119-1127, 2014. <http://informahealthcare.com/doi/pdf/10.3109/13880209.2013.879187>

**Haas, MJ**, Onstead-Haas, LM, and **Mooradian, AD**. 2014. The effect of black seed (*Nigella sativa*) extract on FOXO3 expression in HepG2 cells. *Phytotherapy Research*. In Press. <http://onlinelibrary.wiley.com/doi/10.1002/ptr.5069/pdf>

**Haas, MJ**, Shah, GN, Onstead-Haas, LM, and **Mooradian, AD**. 2014. ATPase 8B1 as a blood-brain barrier specific protein. *Cellular and Molecular Neurobiology*. 34/4: 473-478. [http://download.springer.com/static/pdf/411/art%253A10.1007%252Fs10571-014-0045-x.pdf?auth66=1398516856\\_9deec69f1639337ce9636eee61c09330&xt=.pdf](http://download.springer.com/static/pdf/411/art%253A10.1007%252Fs10571-014-0045-x.pdf?auth66=1398516856_9deec69f1639337ce9636eee61c09330&xt=.pdf)

Jung Rae Cho, JR, Desai, B, **Haas, MJ**, Rollini, F, Franchi, F, Muniz-Lozano, A, Tello-Montoliu, A, Ferrante, E, Guzman, LA, Bass, TA, and Angiolillo, DJ. 2014. Impact of cigarette smoking on P2Y12 receptor binding activity before and after clopidogrel therapy in patients with coronary artery disease. *Journal of Cardiovascular Translational Research*. 7/1: 47-52. <http://link.springer.com/article/10.1007%2Fs12265-013-9530-8>

Tao le, Bhushan, V, **Sheikh-Ali, M**, Kachiu Cecilia Lee. First Aid for the USMLE STEP 2 CS, Fifth edition, McGraw-Hill 2014.

**Haas, MJ**. Kurban, W. Shah, H. Onstead-Haas, L, **Mooradian, AD**. Beta blockers suppress dextrose-induced endoplasmic reticulum stress, oxidative stress and apoptosis in human coronary artery endothelial cells. Published in *American Journal of*



Therapeutics Jan. 2015.

**Haas MJ**, Onstead-Haas LM, Szafran-Swietlik A, Kojanian H, Davis T, Armstrong P, Wong NC, **Mooradian AD**. Induction of hepatic apolipoprotein A-I gene expression by the isoflavones quercetin and isoquercetrin. *Metabol* Aug. 2014; 110:8-14.

**Mooradian AD, Haas MJ**. Targeting high-density lipoproteins: increasing de novo production versus decreasing clearance. *Drugs*, 75:713-722, 2015.

**Mooradian AD**. Drug therapy of diabetic dyslipidemia: Do the statins suffice? *Am. J. Therap.* 22:87-88, 2015.

August P, Hardison RM, Hage FG, Marroquin OC, McGill JB, Rosenberg Y, Steffes M, Wall BM, Molitch M; BARI 2D Study Group (**Mooradian AD**). Change in albuminuria and eGFR following insulin sensitization therapy versus insulin provision therapy in the BARI 2D study. *Clin J Am Soc Nephrol.* 9:64-71, 2014.

Althouse AD, Abbott JD, Forker AD, Bertolet M, Barinas-Mitchell E, Thurston RC, Mulukutla S, Aboyans V, Brooks MM; for the BARI 2D Study Group (**Mooradian AD**). Risk factors for incident peripheral arterial disease in type 2 diabetes: results from the Bypass Angioplasty Revascularization Investigation 2 Diabetes Trial. *Diabetes Care* 37:1346-1352, 2014.

Krone RJ, Althouse AD, Tamis-Holland J, Venkitachalam L, Campos A, Forker A, Jacobs AK, Ocampos S, Steiner G, Fuentes F, Sing IRP, Brooks MM, for the BARI 2D Study Group (**Mooradian AD**). Appropriate revascularization in stable angina, lessons from the BARI 2D Trial. *Canadian Journal of Cardiology* 30:1595-1601, 2014.

**Haas MJ**, Onstead-Haas LM, Szafran-Swietlik A, Kojanian H, Davis T, Armstrong P, Wong NC, **Mooradian AD**. Induction of hepatic apolipoprotein A-I gene expression by the isoflavones, quercetin and isoquercetrin. *Life Sci.* 110:8-14, 2014.

Wolk, R, Bertolet M, Brooks MM, Pratley RE, Sobel BE, Frye RL, Singh P, Calvin AD, Rutter MK, **Mooradian AD**, Somers VK, for the BARI 2D study group. Differential effects of insulin sensitization and insulin provision treatment strategies on concentrations of circulating adipokines in patients with diabetes and coronary artery disease in the BARI 2D Trial. *European Journal of Preventive Cardiology* 2014 Jul 29. pii: 2047487314544046. [Epub ahead of print].

Kojanian H, Szafran-Swietlik A, Onstead-Haas L, **Haas MJ, Mooradian AD**. Statins prevent dextrose-induced endoplasmic reticulum stress and oxidative stress in endothelial and HepG2 cells. *Am J Therap.* [Epub ahead of print]

#### **Abstracts/Presentations:**

**Wehmeier K**, Makhoul-Ahwach S, Thomas M, Kurban W, Shah H, Chamseddin A, **Haas M, Mooradian AD**, Onstead-Haas L. TNF-alpha modulates cholesterol transport protein synthesis and efflux in osteocytes. *ASBMR 2014 Annual Meeting*, Houston, TX. September 12-15, 2014

**Wehmeier, K**. Update on Osteoporosis and Other Bone Diseases. University of Florida College of Medicine-Jacksonville Internal Medicine Update 2015.

Kurban, W, Kojanian, H, Szafran-Swietlik, A, Onstead-Haas, LM, **Haas, MJ**, and **Mooradian, AD**. Statins prevent dextrose-induced endoplasmic reticulum stress and oxidative stress in endothelial and HepG2 cells. *Endocrine Society 96<sup>th</sup> Annual Meeting, 16<sup>th</sup> International Congress of Endocrinology*, Chicago, IL, 2014.

Makhoul-Ahwach, S, Onstead-Haas, L, **Mooradian, AD**, and **Haas, MJ**. The effect of black seed (*Nigella sativa*) extract on FOXO3 expression in HepG2 cells. *Endocrine Society 96<sup>th</sup> Annual Meeting, 16<sup>th</sup> International Congress of Endocrinology*, Chicago, IL, 2014.

Shah, H, Jafri, M, **Wehmeier, KR**, Onstead-Haas, LM, **Haas, MJ**, and **Mooradian, AD**. Inhibition of endoplasmic reticulum stress and oxidative stress by vitamin D in endothelial cells. *American Association of Clinical Endocrinologists 23<sup>rd</sup> Annual Meeting*, Las Vegas, NV, 2014.

Thomas, M, **Haas, MJ**, Onstead-Haas, LM, Szafran-Swietlik, A, Hagop, K, Davis, T, Armstrong, P, Wong, NCW., and **Mooradian, AD**. Induction of hepatic Apo lipoprotein A-I gene expression by the isoflavones quercetin and isoquercetrin. *American Association of Clinical Endocrinologists 23<sup>rd</sup> Annual Meeting*, Las Vegas, NV, 2014.

**CLINICAL ACTIVITIES**

	<b>AY 14/15</b>
<b>Inpatient Activity</b>	
Initial IP Encounters	366
<b>Outpatient Activity</b>	
Clinic Visits	7484
Thyroid Biopsies	171

**GRANTS AND CONTRACTS**

<b>Principal Investigator</b>	<b>Study Title</b>	<b>Project Period</b>	<b>Sponsor</b>
Wehmeier, K.	A Phase III, multicentre, international, randomized, parallel group, double blind cardiovascular safety study of BI 10773 (10 mg and 25 mg administered orally once daily) compared to usual care in type 2 diabetes mellitus patients with increased cardiovascular risk	04/11-04/17	Boehringer-Ingelheim
Chehade, J.	A trial comparing cardiovascular safety of insulin degludec versus insulin glargine.	11/13-12/20	Novo-Nordisk
	Multiple dose trial examining dose range, escalation and efficacy of oral semaglutide in subjects with type 2 diabetes.	11/13-02/15	Novo- Nordisk
	Efficacy and safety of semaglutide once-weekly versus exenatide ER 2.0 mg once-weekly as add-on to 1-2 oral antidiabetic drugs (OADs) in subjects with type 2 diabetes.	11/13-11/16	Novo -Nordisk
	A 24-Week Metformin Extended Release Compared to Metformin Immediate Release Monotherapy in Adult Subjects with Type 2 Diabetes.	08/13-03/16	Bristol-Myers Squibb
	Safety and Efficacy of Triple Therapy with Saxagliptin added to Dapagliflozin in Combination with Metformin compared to Therapy with Placebo added to Dapagliflozin in combination with Metformin.	08/12-10/15	Bristol-Myers Squibb
Sheikh-Ali, M.	A randomized, double blinded, cross-over trail comparing the safety and efficacy of insulin degludec and insulin glargine, both with insulin aspart as mealtime insulin in subjects with type 1 diabetes.	05/14-04/17	Novo-Nordisk
	A phase II, 16 week, double-blinded, Placebo-controlled, Parallel-group, randomized, multicenter trial to assess effect on glycemic control of three dosage of HM11260C in subjects with inadequately controlled type 2 diabetes receiving a stable dose of metformin.	04/14-04/17	Hanmi
	Efficacy and Safety of Switching from Sitagliptin to Liraglutide in Subjects with type 2 Diabetes not Achieving Adequate Glycemic Control on Sitagliptin and Metformin.	02/14-02/17	Novo- Nordisk
	Two Treatment Approaches for Human Regular U-500 Insulin (Thrice-Daily versus Twice-Daily) in Subjects with Type 2 Diabetes Mellitus Not Achieving Adequate Glycemic Control on High-Dose U-100 Insulin Therapy with or without Oral Agents: A Randomized, Open-Label, Parallel Clinical Trial.	01/13-01/16	Eli Lilly
	The Effect of Insulin Degludec in Combination with Liraglutide and Metformin in Subjects with type 2 Diabetes Qualifying for Treatment Intensification.	09/12-09/15	Novo Nordisk
	A trial comparing the efficacy, patient-reported outcomes and safety of insulin Degludec 200 U/ml vs. insulin glargine in subjects with type 2 diabetes mellitus requiring high-dose insulin.	07/12-06/14	Novo-Nordisk
	The efficacy of insulin degludec/liraglutide in controlling glycaemia in adults with type 2 diabetes mellitus inadequately controlled on GLP-1 receptor agonist and metformin therapy.	07/12-07/15	Novo-Nordisk
	A Phase III, multicenter, international, randomized, parallel group, double blind cardiovascular safety study of BI 10773 (10 mg and 25 mg administered orally once daily) compared to usual care in type 2 diabetes mellitus patients with increased cardiovascular risk.	04/11-04/17	Boehringer-Igelheim

	Two Approaches to Escalate Lispro Therapy in Patients with Type 2 Diabetes Mellitus Not Achieving Adequate Glycemic Control on Basal Insulin Therapy and Oral Agents Alone.	09/10-09/16	Eli Lilly
Haas, M.	The effect of ebselen on human coronary artery endothelial cell function. Co-investigator.	05/14-04/15	Deans Fund Research Award

**DIVISION OF GASTROENTEROLOGY**  
**ACADEMIC YEAR 2015 (7/14 – 6/15)**

## Highlights

The Division of Gastroenterology had an outstanding 2014-2015 fiscal year. Clinically, the division has significantly reduced patient wait list times at both campuses. The patient no show rate has also significantly improved at both the Emerson and UF Health Multispecialty Beach Clinic which is currently less than 9%. Patient satisfactions surveys continue to improve in all GI clinics. A direct referral system with using a one phone call system has been very successful this past year in scheduling endoscopic procedures and patient consults. Patients are now being accommodated for their screening colonoscopies the same week. A direct referral system for primary care physicians has been in place for the past year and has been very successful thanks to the good work of our GI office manager, Kimmie Holcomb. The IBD and Hepatology clinics have been reorganized to optimize patient care and enhance the trainees' education. The fellowship curriculum has been restructured to provide competency based training and progression of a fellow's responsibility based on master of these competencies. The fellowship program was fortunate to recruit its top candidates during this year's match and looks forward to another successful year. Our fellows and faculty continue to publish and present their research and QI studies at regional and national meetings.

**Patient Care:** The patient care aspect of our academic mission is pursued at the following locations: UF Health North, inpatient consult service at UF Health Hospital; weekly IBD and hepatology clinics at the Emerson campus; endoscopy services at UF Health Hospital, Jacksonville Beach Surgery Center, Jacksonville Surgery Center and Baptist Beaches Surgical Center; general GI clinics at UF Health North, UF Health at 8<sup>th</sup> Street, Emerson and UF Beach campuses. In addition to routine endoscopic procedures, the following procedures are provided for our patients: Endoscopic Ultrasound (EUS), Endoscopic Retrograde Cholangiopancreatogram (ERCP), high resolution esophageal manometry, BRAVO ph testing, capsule endoscopy, single balloon enteroscopy, hemorrhoid banding, infusion therapy with biologics for IBD patients and treatment and counseling for patients with viral hepatitis is also available. Our mission is to continue to improve patient access and overall quality of care and patient safety. Specific attention will focus on reduced patient wait times and continued improvement of patient no show rates.

**Education:** Our six key faculty members, as defined by the ACGME, include Dr. Emely Eid, Dr. Silvio deMelo, Dr. Amie Deutch, Dr. Juan Munoz, Dr. James Scolapio and Dr. Paul Sievert. The division has a total of 6 fellows and the program has been successful in maintaining a 100% first time pass rate on the GI boards over the past 10 years. The program has consistently matched with top candidates. All fellows have participated and completed quality improvement and research projects. Many of our fellows have been selected for research awards and presented their research at both state and national meetings. The goals of the program remains enhanced competency-based training with progression of a fellow's clinical responsibility based on mastering of specific core competencies or milestones. Specific attention will also continue to focus on the core competency of professionalism.

**Research:** Faculty members have been productive in scholarly activities over the past year. They have given multiple scientific presentations at local, regional and national meetings. Our faculty continues to mentor fellows in their research and QI studies. The division has published papers on a wide range of topics including Barrett's esophagus, IBD, liver diseases, pancreas diseases, and nutrition. The mission of the program remains increasing the number and quality of extramurally funded studies with specific attention on mentoring our GI fellows on prospective hypothesis driven clinical studies.

## LISTING OF FACULTY MEMBERS

**Robert Bass, M.D., Assistant Professor**

Medical School / Graduation date	Medical College of Georgia	1988
Internship/residency and year	University of South Alabama	1991
Subspecialty training and year	University of Florida – Jacksonville	1993

**Silvio de Melo, M.D., Assistant Professor**

Medical School / Graduation date	Faculdade de Medicina da Universidade , Recife, Brazil	2001
Internship/residency and year	UT-Southwestern Medical Center, Dallas, TX	2006
Subspecialty training and year	UT-Southwestern Medical Center, Dallas, TX	2009
Subspecialty training and year	Mayo Clinic, Jacksonville, FL – Advanced Endoscopy	2010

**Amie Deutch, M.D., Assistant Professor**

Medical School / Graduation date	Loyola University Chicago, Maywood, IL	1998
Internship/residency and year	St. Elizabeth's Med Center, Boston, MA	2001
Subspecialty training and year	University of Massachusetts	2004

**Emely Eid M.D., Assistant Professor**

Medical School / Graduation date	American University of Beirut, Beirut, Lebanon	2004
Internship/residency and year	Indiana University , Indianapolis, IN	2009
Subspecialty training and year	UT-Southwestern Medical Center, Dallas, TX	2012

**Juan Munoz, M.D., Associate Professor**

Medical School / Graduation date	Universidad Complutense, Spain	1991
Internship/residency and year	University of Florida – Jacksonville	2001
Subspecialty training and year	University of Florida – Jacksonville	2004

**James Scolapio, M.D., Professor; Division Chief and Program Director**

Medical School / Graduation date	Marshall University School of Medicine	1991
Internship/residency and year	Mayo Graduate School of Medicine – Jacksonville	1994
Subspecialty training and year	Mayo Graduate School of Medicine – Rochester, MN	1997

**Paul Sievert, M.D., Assistant Professor**

Medical School / Graduation date	University of Miami	1996
Internship/residency and year	Medical College of Virginia	1999
Subspecialty training and year	University of Florida – Jacksonville	2003

## PUBLICATIONS

**Manuscripts:**

Jalaj S, Lee SY, McGaw C, John BK, Li Z, **Munoz JC**. Proton radiotherapy dose perturbations caused by esophageal stents of varying material composition are negligible in an experimental model. *Endoscopy International Open* 2015; 3(1): E46-E50.

Salyers WJ, Vega KV, **Munoz JC**, Trotman BW, Taney SS. Neuroendocrine tumors of the gastrointestinal tract: Case reports and literature review. *World J Gastrointest Oncol* 6(8):301-310. Published online 2014 August 15. doi: 10.4251/wjgo.v6.i8.30.

Nakshabendi R, Berry AC, **Munoz JC**. An Unusual Cause of Lower Gastrointestinal Bleeding. *Clin Gastroenterol Hepatol*. 2014 Nov21.pii: S1542-3565(14)01707-8. doi:10.1016/j.cgh.2014.11.016.

Samuel J, Agresti N, **Munoz JC**. Gastrointestinal manifestations of common variable immunodeficiency disease. *Endoscopy* 2015; 47:E1-E2.

Nakshabendi R, Berry AC, **Munoz JC**. A Plunging Case of Intermittent Dysphagia. *Gastroenterology*. 2015 Apr 29. pii: S0016-5085(14)01342-0. doi:10.1053/j.gastro.2014.11.004.

Nakshabendi R, Berry AC, **Munoz JC**. An Unusual Cause of Chronic Painless Hematochezia. *Gastroenterology*. 2015 Apr 29. pii: S0016-5085(14)01339-0. doi: 10.1053/j.gastro.2014.11.003.

**Abstracts:**

Nakshabendi R, Clark M, Hritani A, **Munoz JC**, Kanar O, Nakshabendi A, Nakshabendi I. Hepatic encephalopathy as the presentation of congenital spleno-renal shunt in the absence of hepatic cirrhosis. *J Invest Med*. May 2015.

Gaye BS, Nakshabendi R, **Munoz JC**. Factors affecting recurrence rate of colonic polyps after endoscopic mucosal Resection (EMR). *Gastrointestinal Endoscopy*, Vol. 81, Issue 5, AB297. May 2015.

Geffen JB, Nakshabendi R, Clark M, **Munoz JC**, Jacksonville, FL. A type II choledocal cyst presenting as pancreatic mass. *J Invest Med*. May 2015.

John BK, Nakshabendi R, Mourad B, **Munoz JC**, Choice of Sedation and its Impact on Adenoma Detection Rate (ADR). Results from a retrospective study (2015) 15 Annual Southern Hospital Medicine Conference Abstracts. *The Ochner Journal*: Mar 2015, Vol. 15, No. 1, pp. e1-e3 PMC436585.

Nakshabendi R, Clark M, **Munoz JC**, Nakshabendi I. Two Cases of Primary Malignant Melanoma of the Colorectal Area. *Am J Gastroenterol*. Oct 2014; 109(S2), S395-S396.

Nakshabendi R, Clark M, **Munoz JC**, Nakshabendi I. A Case of Plunging GIST Presenting as Intermittent Dysphagia *Am J Gastroenterol*. Oct 2014; 109(S2), S223.

LaBarbra F, Nakshabendi R, **Munoz JC**, Endoscopic Retrograde Cholangiopancreatography in the Management of Mirizzi Syndrome: Case Report and Concise Review of Literature. *Am J Gastroenterol*. Oct 2014; 109(S2), S65-S66.

Berry AC, Herdes RE, Larsen MF, Yarur AJ, **Scolapio JS**, Patel BB, Avalos D, Lenchus JD, Reuther III WL. An atypical presentation of small bowel metastasis from a previously undiagnosed primary lung adenocarcinoma. *Journal of Medical Cases*; (Accepted, in press 2014).

**Presentations:**

Gaye B, Nakshabendi R, **Munoz JC**. Factors affecting recurrence rate of colonic polyps after endoscopic mucosal resection 9EMR). Poster presentation at Digestive Disease Week (DDW), Washington, DC. May 2015.

Bilkisu G, Nakshabendi R, **Eid E**. Accuracy of Polyp Measurement during Colonoscopy. Poster Presentation at Digestive Disease Week (DDW), Washington, DC. May 2015.

**Scolapio JS**. Short Bowel Syndrome. Medical Grand Rounds. Richmond Hospital. Staten Island, NY. April 2015.

Lee A, **Eid A**. Providing Fellows-in-training with Education on Inflammatory Bowel Disease Health Maintenance to Improve the Quality of Care in our Healthcare System. Poster presentation at UF College of Medicine Jacksonville Medical Education Day, Jacksonville, FL, April 2015.

Nakshabendi R, Lee A, **Eid E**. Effects of Treatment with Immunomodulators and Biologic Agents on Sleep Health in Inflammatory Bowel Disease Patients. Poster presentation at UF College of Medicine Jacksonville Medical Education Day, Jacksonville, FL, April 2015.

**Munoz, JC**. Endoscopic Mucosal resection (EMR). Grand Rounds. University of Florida- Shands, Jacksonville, FL. Mar 2015.

**Munoz, JC**. Decision on Endoscopy outside the General Guidelines: Rare Cases of Bleeding per Rectum Clinical Vignettes. Grand rounds. University of Florida – Shands, Jacksonville, FL. Mar 2015.

Nakshabendi R, Clark M, **Munoz JC**. A rare case of primary melanoma of the colon. Poster presentation at American College of Physicians. Fort Lauderdale, FL. Nov 2014.

Velocci, V, Blum JP, **Munoz JC**. Interesting case of esophageal intramural pseudodiverticulosis with tract formation in a HIV patient. Poster presentation at Providence Hospital Department of Internal Medicine. Southfield, MI. Nov 2014.

**De Melo, SW**. Diarrhea and Constipation. Board Review in Gastroenterology. Rio de Janeiro, Brazil. November 2014.

Nakshabendi R, Clark M, Hritani A, Nakshabendi A, Janar O, **Munoz JC**. Hepatic encephalopathy as the presentation of congenital spleen-renal shunt in the absence of hepatic cirrhosis. Poster presentation at American Gastroenterological Association. Philadelphia, Pennsylvania. Oct 2014.

Samuel J, Agresti N, **Munoz JC**, Blum-Guzman J. Colonoscopy vs Colonography: Patient Preference for Colorectal Cancer Screening. Poster presentation at American Gastroenterological Association. Philadelphia, Pennsylvania. Oct 2014.

Lee A, **Eid A**. Providing Fellows-in-training with Education on Inflammatory Bowel Disease Health Maintenance to Improve the Quality of Care in our Healthcare System. Poster presentation at American College of Gastroenterology, Philadelphia, PA. Oct 2014.

Velocci V, Blum-Guzman J, **Munoz JC**. An Interesting case of esophageal intraluminal pseudodiverticulosis with tract formation in an HIV Patient. . Poster presentation at American Gastroenterological Association. Philadelphia Pennsylvania. Oct 2014

Blum-Guzman J, **Eid E**, Nagee K. Testicular acute hepatitis-B related polyarteritis nodosa. Poster presentation at American Gastroenterological Association. Philadelphia, Pennsylvania. Oct 2014.

Nakshabendi R, Clark M, **Munoz JC**, Nakshabendi I. Two cases of primary malignant melanoma of the colorectal area. Poster presentation at American Gastroenterological Association. Philadelphia, Pennsylvania. Oct 2014.

Alkaddour A, McGaw C, Hritani R, Palacio C, Gaye B, **Munoz JC**, Vega KJ. No clinical factor explains why Barrett's esophagus primarily occurs in non-hispanic whites. Poster presentation at American Gastroenterological Association. Philadelphia, Pennsylvania. Oct 2014.

Nakshabendi R, Clark M, **Munoz JC**, Nakshabendi I. Sigmoid colon polyp as initial presentation of metastatic papillary renal cell. Poster presentation at American Gastroenterological Association. Philadelphia, Pennsylvania. Oct 2014.

Labarbera FD, Nakshabendi R, **Munoz JC**. Endoscopic retrograde cholangiopancreatography in management of Mirizzi syndrome. Poster presentation at American Gastroenterological Association. Philadelphia, Pennsylvania. Oct 2014.

Nakshabendi R, **Eid E**. Effects of Treatment with Immunomodulators and Biologic Agents on Sleep Health in Inflammatory Bowel Disease Patients. Poster Presentation ACP. Florida. Aug 2014.

Nakshabendi R, Clark M, **Munoz JC**. A rare case of primary melanoma of the colon. Poster presentation at Florida Medical Association. Orlando, FL. July 2014.

**Book Chapters and Monographs:**

**Munoz JC**, Lambiase L. HNPCC or Hereditary nonpolyposis colorectal cancer. Emedicine.com Published 25 Feb 2009. Last update March 2015.

**Munoz JC**, Reddy S. Mallory-Weiss Tear. <https://online.epocrates.com/u/29321145/MalloryWeistear>. British Medical Journal Publishing Group. Last updated: May 2014. In progress.

**Munoz JC**, Laos L. Foreign Body Ingestion. <https://online.epocrates.com/u/29111050/Foreign+body+ingestion>. British Medical Journal Publishing Group Last updated: Nov 2014.

**CLINICAL ACTIVITIES**

<b>Inpatient Activity</b>	<b>AY 14/15</b>
Number of IP Consults (IDX)	1202
Shands Jacksonville Inpatient Procedures (IDX)	1148
Baptist Beaches Inpatient Procedures (IDX)	77
St. Lukes Inpatient Procedures (IDX)	3
<b>Outpatient Activity</b>	
Clinic Visits (IDX)	10579
Clinic Visits (North)	422
Shands Jacksonville Outpatient Procedures	4939
UF North Outpatient Procedures	186
Baptist Beaches Outpatient Procedures	722
Jax Beach Surgery Center Outpatient Procedures	725
Jacksonville Surgery Center	1038



**DIVISION OF GENERAL INTERNAL MEDICINE**  
**ACADEMIC YEAR 2015 (7/14 - 6/15)**

## Highlights

The division continues a robust inpatient and outpatient practice and is an integral part of the educational experience for the Internal Medicine residency.

**Patient Care:** The Division of General Internal Medicine is comprised of 16 members, including the two chief medical residents. All full time faculty are certified by the American Board of Internal Medicine. The clinical care provided by members of the division include the provision of inpatient care as the attendings for the four inpatient teaching services, outpatient care at two locations: the Ambulatory Care Center at UF Health Jacksonville and the UF Internal Medicine Clinic at Emerson, an inpatient Internal Medicine consultation service and medical evaluation of patients admitted to the inpatient Psychiatry service. The division has a busy outpatient practice and based on patient satisfaction, the physicians in the group are considered excellent clinicians. In addition to the excellent physicians in the group, the outpatient primary care practices recently received notification that they had been granted NCQA Level 3 certification as a Patient Centered Medical Home. JaxHATS (Jacksonville Health and Transition Services) clinics held on Monday afternoons and Tuesday and Thursday mornings continue to serve as a model primary care home for emerging adults with chronic illness and special healthcare needs. Dr. Linda Edwards, in conjunction with Dr. David Wood, a general pediatrician, established this clinic for adolescents and young adults who are transitioning from their pediatricians to adult providers in 2005. The PAIDD (Program for Adults with Intellectual and Developmental Disability) clinic continues to grow and provide primary care services and care coordination to this adult special needs population. The clinic and care coordination of these patients is supported by a grant from the Riverside Foundation. Our geriatrician, Dr. Hsiao-Yen Kuo, has developed a growing geriatric outpatient practice, seeing patients at our Emerson site and continues to provide care to patients admitted to one of our local nursing homes.

**Education:** The division provides faculty supervision of residents on the four general internal medicine inpatient teaching services, the inpatient medicine consultation service and geriatrics, as well as faculty supervision and mentoring of all categorical medicine residents in their outpatient continuity practice and urgent care clinics.

Dr. Jeff House serves as Program Director for the Internal Medicine Residency Program and Dr. Palacio is one of the Associate Program Directors for the training program. He is focusing his efforts in the ambulatory care arena and quality improvement initiatives with the residents in their outpatient practice. Dr. Landa serves as the Clerkship Director for medical students from Gainesville who rotate on the Internal Medicine service (inpatient and outpatient). Drs. Landa, Reddy and Palacio served as core faculty for the residency training program in Internal Medicine and are members of the Clinical Competency Committee (previously the Resident Education Committee).

Drs. Masri and Sottile serve as peer reviewers for the University of Florida College of Medicine-Jacksonville faculty development program. Dr. Sottile also serves as a facilitator and is the co-developer of the "Teaching Residents to Teach"-a 6-8 hour intradepartmental seminar offered each year at the University of Florida College of Medicine-Jacksonville to residents and subspecialty residents.

All members of the division participate in morning report and have presented at the noon conference core curriculum series held daily, as well as the Friday afternoon Board review.

The division serves as an integral part of the education program for 3<sup>rd</sup> and 4<sup>th</sup> year medical students from the University of Florida. Members of the division serve as preceptors for students in both the inpatient setting as well as in our outpatient practice. Student evaluations of their experience are excellent and are reflected

in the number of exemplary teacher awards given to faculty within the division.

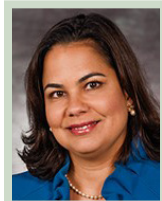
**Quality:** Dr. Jeff House coordinates monthly M&M/QA and QI for the training program. He also serves as the Quality Officer for the Department of Medicine. He is the Chair of the Medical Performance Improvement Committee (MPIC) and is a member of the Performance Improvement Committee-the institutional body that oversees quality and safety for the UF Health Jacksonville campus. The Division of GIM strives to meet HEDIS measures and meaningful use criteria. The division is working with the hospital quality team to review and assess our readmission rates, timeliness of discharges and through put, as well as identify opportunities to continue to improve our patient satisfaction. In the outpatient setting, Dr. Palacio coordinates a number of quality improvement projects with the residents to look at access, show rates and whether preventive care and screening guidelines are being met.

**Research:** Research in the division varies among the faculty. Many of the faculty have mentored residents in their research projects and have assisted them in submitting and being awarded grants from the Dean's Fund for Research. The division continues to be productive as demonstrated by the publications list below.

**Future Directions:** Development of registries through EPIC will assist the division in meeting the needs of our patients and allow us to provide better care to them. To meet the primary care needs of Jacksonville, we will be expanding our practice to the north side. We also plan to expand the nursing home network of our division to provide additional training opportunities for our residents and students, as well as facilitate the care of our patients. The clinic for adults with intellectual and developmental disabilities continues to grow and provides a unique service to this special needs population.

The division will have the opportunity to develop performance improvement initiatives that will lead to improved patient care and safety and result in the preparation of scholarly works. Faculty and resident involvement in these initiatives will be critical.

### LISTING OF FACULTY MEMBERS

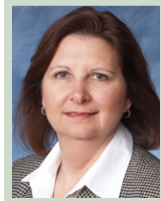


**Silvia Abreu Read M.D., Assistant Professor**

Medical School / Graduation date  
Internship/residency and year

Universidad Nacional Pedro Henriquez Urena  
Pitt County Memorial Hospital

1999  
2003



**Lori A. Bilello, Ph.D., M.B.A., M.H.S., Assistant Professor, Associate Director, CHEQR**

PhD Health Services Research  
Master of Business Administration

University of Florida  
University of Florida

2012  
1998



**Linda Edwards, M.D., Associate Professor, Associate Chairman and Division Chief**

Medical School / Graduation date  
Internship/residency and year

East Carolina University  
Jacksonville Health Education Programs

1981  
1985

**Malcolm Foster, M.D., Adjunct Professor**

Medical School / Graduation date	Bowman Gray School of Medicine	1963
Internship/residency and year	University of Florida, Gainesville	1966
Subspecialty training and year	University of Florida, Gainesville (Infectious Disease)	1967

**Alan Halperin, M.D., Professor**

Medical School / Graduation date	University of Kansas	1971
Internship/residency and year	University of Wisconsin	1974

**Jeffrey House, D.O., Associate Professor**

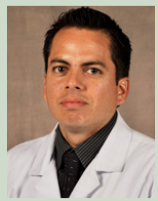
Medical School / Graduation date	Nova Southeastern College of Osteopathic Medicine	1997
Internship/residency and year	University of Florida – Jacksonville	2001

**Rafik Jacob, M.D., Assistant Professor**

Medical School / Graduation date	Ain Shams University	1994
Internship/residency and year	Rhode Island Hospital/Brown University	2013

**Hsiao-Yen Kuo, M.D., Assistant Professor**

Medical School/Graduation date	Institute of Medicine II, Myanmar	1999
Internship and year	Wyckoff Heights Medical Center	2007
Residency and year	Unity St. Mary's Campus	2009
Subspecialty training and year	University of Florida (Geriatrics)	2010

**Cristian Landa, M.D., Assistant Professor**

Medical School / Graduation date	Ross University	2009
Internship/residency and year	University of Florida – Jacksonville	2011

**Ghania Masri, M.D., Associate Professor**

Medical School / Graduation date	Damascus University, Syria	1989
Internship and year	Cleveland Clinic Foundation	1992
Residency and year	Case Western Reserve University	1994

**Carlos Palacio, M.D., M.P.H., Associate Professor**

Medical School / Graduation date	University of Miami	1993
Internship/residency and year	University of Florida, Jacksonville	1997
Post-graduate training and year	University of North Florida (MPH, Master of Public Health)	2007

**Pramod Reddy, M.D., Associate Professor**

Medical School / Graduation date	Sri Dev Raj Urs Medical College, India	1992
Internship/residency and year	Stony Brook University Hospital	2000

**Tanya Reimschissel, D.O., Assistant Professor**

Medical School / Graduation date	Lake Erie College of Osteopathic Medicine	2010
Internship/residency and year	University of Florida College of Medicine-Jacksonville	2013

**Elisa Sottile, M.D., Assistant Professor**

Medical School / Graduation date	Temple University School of Medicine	1993
Internship/residency and year	University of Pennsylvania	1997

## PUBLICATIONS

**Monographs:**

**Palacio C**, Olney R. Rickets. BMJ publishing group point-of-care Website. (US product on epocrates.com). Updated 2015

**Palacio C**, Olney R. Rickets. BMJ publishing group Best Practice Website. (International product on bestpractice.com) Update 2015

**Palacio C**. 65-year old woman-Mrs. Thompson. In SIMPLE: Simulated Internal Medicine patient learning experience project eds. Berman and Fall. <http://www.simplecases.org>. Updated 2015

**Palacio C**, Fauzia R. Blast crisis. BMJ publishing group point-of-care Website. (US product on epocrates.com) Updated 2015

**Palacio C**, Fauzia R. Blast crisis. BMJ publishing group Best Practice Website. (International product on bestpractice.com) Updated 2015

**Publications:**

Baldeo C, Ali R, Seeram V, **House J**. Lung cancer presenting as a soft-tissue metastasis. Case Rep Oncol 2015;8:185-188. (DOI:10.1159/000381875)

Babbar A, Bohatch L, **House J**. Rare presentation of a parathyroid carcinoma associated with brown tumors. J Invest Med. 2015;63(2):112

Alexandraki I, **Palacio C**, Mooradian A. The relative merits of low carbohydrate diets in managing obesity: A meta-analysis of low carbohydrate versus low fat diets (SMJ-14-304R2). (Accepted for publication Southern Medical Journal March 2015)

**Reddy P**, Dupree L. Approach to antihypertensive therapy. Am J Ther 24 Feb 2015

**House, J**. Does gastrointestinal dysmotility predispose to recurrent or severe forms of Clostridium difficile infections?, Case Reports in Gastrointestinal Medicine, vol. 2014, Article ID 575216, 2 pages, 2014. (DOI:10.1155/2014/575216)

First Aid for the USMLE Step 2 CS, 5<sup>th</sup> edition 2014, Faculty Reviewer, **House J**.

Touchan J, Ibrahim S, **House J**, **Palacio C**. A comparison of heart failure readmissions between teaching and nonteaching hospital services. Southern Medical Journal (Impact Factor: 1.12). 08/2014; 107(8):501-7. (DOI: 10.14423/SMJ.0000000000000152)

Ramoutar V, **Landa C**, James LR. Acute tubular necrosis (ATN) presenting with an unusually prolonged period of marked polyuria heralded by an abrupt oliguric phase. *BMJ Case Rep* 2014 Aug 22;2014

Alexandraki I, Pincavage AT, Glod S, Liston B, **Palacio C**, DeWaay D, Chheda SG, Van Wagoner NJ, LaRochelle JS, Burger AP, Shaheen A, Simmons L, Fagan MJ, Leizman DS, Wayne JT, Levine DL, Szauter K, Chretien KC. Journal watch from ACE (Alliance for Clinical Education): annual review of medical education articles in internal medicine journals, 2012-2013. *Teach Learn Med*. 2014;26(4):438-43. PubMed PMID: 25318043.

**Palacio C**, House J, Ibrahim S, Touchan JN, Mooradian A. A comparison of congestive heart failure readmissions among teaching and nonteaching hospital services. *South Med J*. 2014 Aug;107(8):501-7. PubMed PMID: 25084187.

Dupree L, **Reddy P**. Use of Rivaroxaban in a patient with history of nephrotic syndrome and hypercoagulability. *Ann Pharmacother*. 2014 Dec;48(12):1655-8.

#### **Book Chapter:**

Wood D, Hennen B, **Edwards L**, Ramirez, S. Transition in services from adolescence to adulthood. In: Health Care for People with Intellectual and Developmental Disabilities Across the Lifespan. 3<sup>rd</sup> edition, I Leslie Rubin, Joav Merrick, Donald E. Grey and Dilip R. Patel (ed.), Rubin and Crocker, 2014; Chapter 7.13.

#### **Abstracts/Presentations:**

Ali R, Baldeo C, Chaudrey S, **Landa, C**. Cryoglobulinemia as an idiosyncratic reaction to Moringa Oliefera. *J Invest Med* 2015

Gupta E, Minocha V, **Landa C**. Rare elusive diagnosis of NK lymphoma. *J Invest Med* 2015

Ali R, **Landa C**, Onyenekwe J, Roshan L. Endobronchial carcinoid tumor with obstructive pneumonia obscuring the diagnosis of granulomatosis with polyangitis. *CHEST* 2014;146:464A

#### **Presentations:**

**Masri, Ghania**. Obesity management. Oral presentation at: Annual Internal Medicine Update, Jacksonville, FL, February 2015

Alkaddour A, **Palacio C**, Vega KJ. 2015 Digestive Diseases Week Late-Breaking Clinical Abstract Title: Barrett's esophagus, African Americans and non-Hispanic whites: a meta-analysis. Oral presentation at: Division of Digestive Diseases and Nutrition, OUHSC, Oklahoma City, OK. February 2015

Alkaddour A, **Palacio C**, Vega KJ. 2015 Digestive Diseases Week Late-Breaking Clinical Abstract Title: Barrett's esophagus, African Americans and non-Hispanic whites: a meta-analysis. Oral presentation at: Department of Medicine, University of Florida Jacksonville, Jacksonville, FL. February 2015

Farah A, Saif I, Pujan P, **Rafik J, Palacio C**, Cury J. Skin Rash in the ICU: SJS, TEN, or Something Altogether Different? Oral presentation at: American Thoracic Society Annual Conference, Denver, CO. May 2015

#### **Editorial Board/Review:**

**Masri, G**. JSciMed Central/JSM Clinical Case Reports.

**Palacio C**. Section Editor and Reviewer for General Internal Medicine Medstudy 16th edition

**HONORS AND AWARDS**

Linda Edwards, M.D.	Hanson Professorship of Medicine
Malcolm Foster, M.D.	Board of Directors, ACP Foundation, Vice-Chairman
Alan Halperin, M.D.	Chair, Institutional Review Board, UF & SJMC University of Florida Exemplary Teacher Award 2015
Jeff House, D.O.	University of Florida Exemplary Teacher Award 2015
Cristian Landa, M.D.	University of Florida Exemplary Teacher Award 2015
Ghani Masri, M.D.	University of Florida Exemplary Teacher Award 2015
Carlos Palacio, M.D.	University of Florida Exemplary Teacher Award 2015

**CLINICAL ACTIVITIES**

	<b>AY 14/15</b>
<b>Inpatient Activity</b>	
Numbers of Inpatient Admissions	3770
<b>Outpatient Activity</b>	
Clinic Visits	11695

**CONTRACTS AND GRANTS**

<b>Investigator</b>	<b>Study Title</b>	<b>Project Period</b>	<b>Funded Amount</b>	<b>Sponsor</b>
Edwards, L (Co-PI)	University of Florida Foundation for the Medical Home for Adults with Intellectual and Developmental Disabilities Project	3/6/2012 - 3/6/2015	\$75,000/year for 3 years	The Community Foundation Grant – Riverside Hospital Foundation Charitable Fund
House, J. (Principle)	Standardization of an Ultrasound Guided Procedures Curriculum for an IM Residency	9/2013 – Present	\$10,000	Dean's Grant
Landa, C (Principle)	Immunomodulatory Activity of Vitamin D and Metabolites on Hepatitis C Viral Replication in Hepatocytes	8/2011 -Present	\$10,000	Dean's Grant
Landa, C (Principle)	Standardization of an Ultrasound Guided Procedures Curriculum for an IM Residency	9/2013 – Present	Unfunded	SonoSite Inc.
Landa, C (Principle)	Standardization of an Ultrasound Guided Procedures Curriculum for an IM Residency	9/2013 – Present	\$10,000	Dean's Grant
Masri, G (Sub-I)	A Placebo-Controlled, Randomized, Double-Blind, Parallel Group, Dose-Finding Trial to Evaluate the Efficacy and Safety of TBS-2 Intranasal Testosterone Gel in Women With Acquired Female Orgasmic Disorder	Aug 14, 2011- Present	\$32,680.00	Trimel Biopharma SRL
Masri, G (Sub-I)	A Phase 3, Randomized, Double-Blind, Placebo-Controlled, Multi-Center Trial to Evaluate the Safety and Efficacy of TX-004HR in Postmenopausal Women with Moderate to Severe Symptoms of Vulvar and Vaginal Atrophy	3/10/2015-11/1/2015		Therapeutics MD, Inc
Masri, G Participant	An Emergency Department to Home Intervention to Improve Quality of Life and Reduce Hospital Use	02/2015 –02/2018		PCORI
Masri, G (Sub-I)	A Phase 3, Double-Blind, Placebo-Controlled, Randomized, Multi-Center Study to Evaluate the Safety and Efficacy of Estradiol in Combination with Progesterone in Postmenopausal Women with an Intact Uterus: Estradiol to Reduce the Frequency and Severity of Vasomotor Symptoms and Progesterone to Manage the Incidence of Endometrial Hyperplasia	Aug 22, 2013 to present	\$113,520.00	TherapeuticsMD, Inc

<b>Title</b>	<b>Recipient</b>	<b>Amount</b>
Hanson Professorship	Linda Edwards, M.D.	10,808.99

**DIVISION OF HEMATOLOGY & MEDICAL ONCOLOGY**  
**ACADEMIC YEAR 2015 (7/14 – 6/15)**

## Highlights

The Division of Hematology and Medical Oncology continues to grow in its clinical and academic mission of the University of Florida with the addition of Dr. Louise Zhou who joined the Division in December 2014. The division consists of two board certified medical oncologist and two dual boarded in Hematology and Medical Oncology. The division provides inpatient clinical consultation in hematology and medical oncology and maintains an ACGME accredited Oncology Fellowship Training Program. The division actively participates in training internal medicine residents, medical students, pharmacy, and nursing in outpatient and inpatient settings.

**Patient care:** The Division provides patient care at the UF Health Jacksonville campus, CB McIntosh Center, and Emerson Medical Plaza. Our core faculty members of the division include Dr. Fauzia Rana, Dr. Dat Pham, Dr. Lara Zuberi, and Dr. Louise Zhou. The division continues to work closely with Radiation Oncology, Surgical Oncology and Central Administration of UF Health Jacksonville, providing multimodality care for oncology patients. All faculty members work closely with the Proton Therapy Institute in collaboration of patient care, improving patient access and overall quality of care on the inpatient service and in the outpatient clinical setting. The division also participates in simulation lab workshops, teaching the Medical Oncology Fellow's "How to break the bad news". The fellows are also trained on how to perform bone marrow biopsy procedures.

Dr. Rana volunteers at the We Care Clinic where she sees patients and provides free service to underserved patients. Dr. Zuberi participated at the Public Forum on "What Everyone Should Know about Breast Health". The Oncology division hosted a PNH Program presented by invited speaker, Ilan Shapira, M.D., Director of Clinical Oncology at Beth Israel Medical Center. Our division continues to host the Oncology Pharma Expo quarterly. This program has been very successful in boosting faculty and staff moral and building better relationships with industry without disruption in clinical activity.

Each member of the division has a strong role in division activities. Dr. Rana, Division Chief and Associate Fellowship Program Director, continues to provide care and leadership as Director of the Adult Sickle Cell Program and serves as key clinical faculty for the Department of Medicine Internal Medicine Residency Program. She also serves on the Community Hospice Advisory Board as a member. Drs. Rana and Zuberi serve as an important component in the Multidisciplinary Breast Program. Dr. Pham, Fellowship Program Director, works closely with the education of the fellows and continues his efforts in the Multidisciplinary Thoracic Oncology Program. Dr. Louise Zhou is key clinical faculty for the UF Health Jacksonville Cancer Committee and Transfusion Committee and continues her efforts with the Multispecialty GI Cancer Program. All providers in the division work very closely with UF Proton Therapy Institute and the Department of Surgery. Dr. Louise Zhou is the Hematology and Medical Oncology champion for the Head and Neck Multidisciplinary program with ENT and Radiation Oncology at UF Health Jacksonville.

**Education:** The Medical Oncology Fellowship, under the direction of Program Director, Dr. Dat Pham, has remained strong and matched top candidates with 100% ABIM subspecialty board pass rate, with one position filled for July 2015. The Medical Oncology Fellowship program successfully continues to maintain its ACGME accreditation.

Our division works closely with the GME office at University of Florida College of Medicine-Jacksonville, playing an active role in the educational core lecture series including Grand Rounds and Oncology Didactic Lecture Series. The physicians provide mentoring and teaching to the residents interested in our specialty. Faculty supervise medical oncology fellows in their outpatient continuity clinics and provide supervision during all bone marrow procedures.

The division continues to support the Internal Medicine Residency Program through facilitation of Night Float Rotation, Medicine Resident's Noon Conference and Grand Rounds. The division offers a consult experience in hematology and oncology to residents at all training levels. The Oncology Fellowship has rotations at Mayo Clinic Jacksonville (Bone Marrow Transplant) and Baptist Medical Center with Dr. Troy Guthrie. Medical Oncology fellows have opportunities to contribute at weekly didactic lecture series. Our monthly Journal Club generates discussion on various topics and keeps us up to date on the latest advances in hematology and oncology. Our fellows have submitted peer review manuscripts, several of which were accepted for publication. Dr. Rana serves as key clinical faculty for Internal Medicine and is a member of the Resident Education Committee. Our quarterly Pharma Fair has been successful this year, which provides additional educational materials and latest cancer treatment guidelines.

Dr. Rana was chosen from our department to receive the 2014 University of Florida-College of Medicine's Exemplary Teachers Award. This award is given in recognition of outstanding teaching contributions of individual faculty member.

**Research:** The division is currently conducting three clinical trials. All faculty actively participate in the UF Proton Therapy research trials. Research in the division varies among the faculty. We have collaborated with Mayo and have been grandfathered into the ALLIANCE cooperate group, as an affiliate site, which merged ACOSOG, CALGB, and NCCTG.

The division produced two monographs, one publication, one abstract, and 11 presentations during the academic year.

### LISTING OF FACULTY MEMBERS



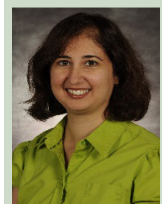
**Fauzia Rana, M.D., Associate Professor and Division Chief**

Medical School / Graduation date	Fatima Jinnah Medical College	1982
Internship/residency and year	University of Rochester New York	1990
Subspecialty training and year	Dana Farber Deaconess Hospital/Harvard	1993



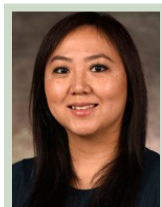
**Dat Pham, M.D., Associate Professor**

Medical School / Graduation date	University of Florida Jacksonville	1997
Internship/residency and year	University of Florida Jacksonville	2000
Subspecialty training and year	University of Florida Jacksonville	2002



**Lara Zuberi, M.D., Assistant Professor**

Medical School / Graduation date	Aga Khan University Hospital, Karachi, Pakistan	2000
Internship/residency and year	Henry Ford Hospital, Detroit, MI	2005
Subspecialty training and year	Henry Ford Hospital, Detroit, MI	2010



**Louise Zhou, M.D., Assistant Professor**

Medical School / Graduation date	Ross University School of Medicine	2008
Internship/residency and year	University of Florida, Jacksonville	2011
Subspecialty training and year	University of Florida, Jacksonville	2014



## PUBLICATIONS

### Monographs:

Palacio C, **Fauzia R.** Blast crisis. BMJ publishing group Best Practice Website. January 2009 (International product on bestpractice.com) Updated 2010, 2011, 2012, 2013, 2014, 2015.

Palacio C, **Fauzia R.** Blast Crisis. BMJ publishing group point-of-care Website. January 2009 (US product on epocrates.com) Updated 2010, 2011, 2012, 2013, 2014, 2015.

### Publications:

Tariq K, Palacio C, **Rana F**, Farhangi A, Tariq W, **Zuberi L, Zaiden R**, Al-Saffar F, Ibrahim S, **Pham D.** Relationship of Gender and Smoking History in the Development of Hypothyroidism from Exposure to External Beam Radiation for Head and Neck Cancers. World Journal of Oncology 2014; Jul; 5 (3): 113-117.

### Abstracts/Presentations:

**Ning K.** "Rhabdoid Meningioma – a rare and aggressive subtype of meningioma". Poster presentation at: UF College of Medicine Research Day; Jacksonville, FL, May 2015.

**Hew J.** ALK Gene Mutated Small Cell Lung Cancer in patients with Trisomy 21. Poster presentation at: UF College of Medicine Research Day; Jacksonville, FL, May 2015.

**Emani M.** Waldenstrom Macroglobulinemia Presenting as Bilateral Central Retinal Vein Thrombosis. Poster presentation at: UF College of Medicine Research Day; Jacksonville, FL, May 2015.

**Rana F.** Bleeding Disorders/Breast Cancer. Oral presentation at: APPNA 18<sup>th</sup> International Meeting; Australia, February 18, 2015.

**Zuberi L.** What Everyone Should Know About Breast Health. Moderator at: Public Forum; Jacksonville, FL, February 11, 2015.

**Zuberi L.** Case Studies in Anticoagulation Therapy. Oral presentation at: UF Internal Medicine Update 2015; Jacksonville, FL, February 7, 2015.

Tariq, K, **Rana, F**, Rana, R, Farhangi A, **Zuberi L.** Hemodynamic Instability from Vitamin C Deficiency. The Ochsner Journal 15:e1-e31, 2015.

**Pham D.** Thrombocytopenia. Oral presentation at: UF Health Internal Medicine-Grand Rounds; Jacksonville, FL, October 29, 2014.

Tariq, K, **Rana, F**, Rana, R, Farhangi A, **Zuberi L.** Hemodynamic Instability from Vitamin C Deficiency. Oral presentation at: 15<sup>th</sup> Annual Southern Hospital Medicine Conference; Atlanta, Ga, October 9-11, 2014.

**Zuberi L.** What Everyone Should Know About Breast Health. Moderator at: Public Forum; Jacksonville, FL, October 7, 2014.

**Zuberi L.** Hematologic Complications of Bariatric Surgery. Oral presentation at: UF Health Internal Medicine-Grand Rounds; Jacksonville, FL, August 13, 2014.

**Zuberi L.** Biopsy results are positive for Breast Cancer "Journey from Diagnosis to Cure". Oral presentation at: Education and Advocacy Day 2014; Jacksonville, FL, June 28, 2014.

**CLINICAL ACTIVITIES**

	<b>AY 14/15</b>
<b>Inpatient Activity</b>	
Number of Inpatient Admissions	657
<b>Outpatient Activity</b>	
Clinic Visits	7059

**CONTRACTS AND GRANTS**

<b>Principal Investigator</b>	<b>Study Title</b>	<b>Project Period</b>	<b>Sponsor</b>	<b>Award Amount</b>
Rana, F	Randomized Phase 3B Study of Three Treatment Regimens in Subjects with previously Untreated Multiple Myeloma Who Are Not Considered Candidates for High-Dose Chemotherapy and Autologous Stem Cell Transplantation: VELCADE® (Bortezomib), Thalidomide, and Dexamethasone (VTD) versus VELCADE® and Dexamethasone (VD) versus VELCADE®, Melphalan, and Prednisone (VMP)	05/14/2008-05/14/2014	Millennium Pharmaceuticals	\$36,457.00
Rana, F	An Open Label Assessment of Safety and Efficacy of Ruzolitnib (INCB018424-258) in subjects with Primary Myelofibrosis	08/12/2011-08/12/2014	Incyte Corporation	\$5,775.00
Rana, F	A Randomized, Double-Blind, Placebo Controlled Study of the JAK Inhibitor INCB018424-351 Table Administered orally to subjects with primary myelofibrosis	09/04/2009-05/27/2015	Incyte Corporation	\$51,578.00
Rana, F	Studying Interventions for Managing Patients with Chronic Myeloid Leukemia in Chronic Phase: The 5-year Prospective Cohort Study (SIMPLICITY)	11/04/2012-11/30/2017	Bristol Myers Squibb Co.	\$1,625.00
Latif, N	Randomized, open label, multicenter phase III study of Efficacy and Safety in Polycythemia Vera subjects who are resistant to or intolerant of hydroxyurea: JAK inhibitor INC424 tablets versus best available care (The RESPONSE Trial)	02/27/2012-02/27/2015	Parexel International Corp.	\$3,062.00
Rana, F	An Open Label Assessment of an Alternative Dosing Strategy of Ruzolitnib in Patients with Primary Myelofibrosis (18424-261)	02/06/2012-02/06/2015	Incyte Corporation	\$8,618.75
Pham, D	A double-blind, randomized, placebo-controlled Phase III study to assess the efficacy of recMAGE-A3 + AS15 Antigen-Specific Cancer Immunotherapeutic as adjuvant therapy in patients with resectable MAGE-A3-positive Non-Small Cell Lung Cancer	04/23/2007-08/05/2016	Glaxo Smith Kline (GSK)	\$25,094.00
Rana, F	The Chronic Lymphocytic Leukemia Disease Registry	03/20/2011-03/20/2017	Celgene	\$12,681.00
Rana, F	Connect MM: The Multiple Myeloma Disease Registry	03/20/2011-03/20/2017	Celgene	\$13,994.00

**DIVISION OF INFECTIOUS DISEASES**  
**ACADEMIC YEAR 2015 (7/14 - 6/15)****Highlights**

The Division of Infectious Diseases continued its clinical and academic missions during this past year. The division is comprised of three university based infectious diseases consultants, all of whom are dually boarded in Internal Medicine and Infectious Diseases, with an additional 11 ancillary faculty composed of board certified infectious diseases physicians, doctoral level microbiologists and doctoral level pharmacists who are actively involved in various aspects of the fellowship training program.

The division provided inpatient clinical consultation in Infectious Diseases at the UF Health Hospital/Jacksonville; Hospital Infection Control and Antimicrobial Stewardship direction at UF Health Hospital, outpatient travel and tropical medicine services, outpatient infectious diseases consultation and clinical infectious diseases research. The division maintained an ACGME accredited Infectious Diseases fellowship training program and actively participated in the training of internal medicine residents and medical students in inpatient and outpatient infectious diseases.

Members of the division also assumed administrative and teaching roles in ID division and IM activities. Dr. Sands is the university ID Division Chief and ID Fellowship Program Director. Dr. Guzman is the Chair of Hospital Infection Control and Antimicrobial Stewardship Programs for UF Health Hospital, the ID Fellowship Associate Program Director and the Associate Program Director for the Core Internal Medicine Residency. Dr. Mercado oversaw fellows' research initiatives and is actively involved in Internal Medicine resident teaching and impaired adolescents' clinics.

**Patient care:**

University ID Division inpatient and hospital based activity: The division provided full time inpatient infectious diseases consultation throughout the UF Health Jacksonville Hospital system. During the 2014-2015 academic year, the division performed 832 inpatient infectious diseases consultations with over 4340 subsequent follow-up visits at UF Health Hospital.

Outpatient services: The division offered outpatient ID consultation by referral at the Emerson and the Ambulatory Care Clinic (ACC) subspecialty clinics. During the 2014-2015 academic year, there were over 1167 outpatient ID consultative visits for HIV/AIDS and general Infectious Diseases diagnoses including chronic osteomyelitis and MRSA infection.

Travel medicine services were provided three times per week for overseas travelers at the Faculty Clinic. Over 400 travel patients were seen during the academic year.

**Education:**

Grand Rounds: The division actively participates in presenting at Medical Grand Rounds and as regular attendees. This academic year faculty gave presentations at four UF Grand Rounds and two topical lectures at the Internal Medicine Annual Update.

Fellowship Training: The division maintained an ACGME accredited fellowship in Infectious Diseases with one fellow for each of the two clinical fellowship years. The fellowship program has been re-accredited on a five year cycle. The fellowship training is unique in offering two months of clinical microbiology, dedicated research time, two months of training in solid organ transplantation ID at the Mayo Clinic, one month training in Pediatric Infectious Diseases at Wolfson Children's Hospital and one month as a junior ID faculty consultant in the UF Health MICU, in addition to 15 months experience as the consultant and teaching fellow on the general ID in-patient consult service at UF Health.

Our Infectious Diseases fellows continue to distinguish themselves through maintaining a 100% ID boards pass rate and achieving successful employment as full time Infectious Diseases consultants in a variety of metropolitan areas, including San Francisco, Atlanta, Baton Rouge, Tampa, Orlando and here in Jacksonville.

Resident Training: Faculty provided a 12 lecture series ID core curriculum conference for the residents; ID consultation teaching and clinical rounds; outpatient HIV/AIDS continuity clinics; and resident ID board review sessions.

Medical Student Education: Medical students from UF Gainesville, other US sites and internationally, rotate on the infectious diseases consultative service and the outpatient ID clinics at both the ACC and Emerson campuses.

ID Division Conference Schedule: The division maintained a full conferencing schedule with topics including: core infectious diseases topics, regularly scheduled case conferences; ID board reviews; monthly journal club; HIV topical reviews; monthly TB cases and topical reviews; monthly research conferences; travel and tropical medicine conferences; transplantation ID conferences; and monthly Med/Peds ID joint conferences.

Cooperative extramural resident and fellows' training: As part of their curricula, Mayo Clinic ID fellows, UF Intensivist fellows, UF Pediatric ID fellows and UF Podiatric-Orthopedic residents rotated on the UF ID inpatient consultative service and in the HIV outpatient clinics.

Research: Dr. Sands was the principal investigator on two NIH sponsored research grants through the INSITE network; an observational study of pandemic influenza H1N1 complications and the START study (Strategic Timing of Anti-Retroviral Therapy study) to define the appropriate time to initiate antiviral therapy for HIV-infected patients.

Publications and presentations this past academic year included four abstracts presented at UF Research Day, five published ID monographs and 17 journal articles published in peer reviewed journals.

### LISTING OF FACULTY MEMBERS



**Ivan Guerrero, M.D., Assistant Professor**

Medical School / Graduation date	Universidad Nacional Mayor De San Marco, Peru	1991
Internship/residency and year	Metropolitan Hospital Center	1999
Subspecialty training and year	University of Florida College of Medicine-Jacksonville	2001



**Nilmarie Guzman, M.D., Assistant Professor**

Medical School / Graduation date	Ponce School of Medicine, Ponce, PR	1996
Internship/residency and year	Damas Hospital, Ponce, PR	1999
Subspecialty training and year	University of Florida Health Science Center, Jacksonville, FL	2006



**Diana Mercado, M.D., Assistant Professor**

Medical School / Graduation date	University of the Philippines	2002
Internship/residency and year	Albert Einstein Medical Center	2008
Subspecialty training and year	Drexel University College of Medicine	2010


**Michael Sands, M.D., M.P.H.&T.M., Professor and Division Chief**

Medical School / Graduation date	Georgetown University, Washington, DC	1972
Internship/residency and year	St. Mary's Hospital, San Francisco, CA	1974
Subspecialty training and year	Tulane University School of Public Health & Tropical Medicine, New Orleans, LA (MPH&TM)	1975
	Louisiana State University School of Medicine, New Orleans, LA (Infectious Disease)	1977
	Northwestern Memorial Hospital, Dept. of Pathology, Clinical Microbiology Section (Clinical Microbiology)	1981

**Ancillary Teaching Faculty:**
**UF Health Hospital Critical Care**

Abubakr Bajwa, MD  
James D. Cury, MD  
Lisa Jones, MD  
Adil Shujaat, MD

**UF Health Hospital Microbiology Laboratories**

Yvette McCarter, Ph.D.

**UF Health Hospital Division of Pharmacy and Antimicrobial Stewardship**

Christopher Jankowski, Pharm D.

**Mayo Clinic – Transplantation ID**

Walter Hellinger, M.D.  
Julio Mendez, M.D.  
Salvatore Alvarez, M.D.  
Lisa Brumbacker, M.D.  
Wendy Bosch, M.D.

**Wolfson Childrens' Hospital – Pediatric ID**

Nizar Maraqa, MD  
Ana Alvarez, M.D.  
Ayesha Mirza

**State of Florida Department of Health Laboratories**

Sharon Crowe, B.S., M.S.

## PUBLICATIONS

Nuckchady D, Heckman MG, Diehl NN, Creech T, Carey D, Domnick R, **Hellinger, WC**. Assessment of an automated surveillance system for detection of initial ventilator-associated events. Am J Infect Control. 2015 Jul 08. PMID:26164766. DOI:10.1016/j.ajic.2015.05.040.

Borges ÁH, O'Connor JL, Phillips AN, Rosholt FF, Pet S, Each MJ, French MA, Lundgren JD; for the INSIGHT SMART including **Sands, M** and ESPRIT Study Groups and the SILCAAT Scientific Committee. Factors associated with plasma IL-6 levels during HIV infection. J Infect Dis. 2015 Feb 26. Pie: jiv123. [Pub ahead of print] PMID: 25722296

French MA, Cozzi-Lepri A, Arduino RC, Johnson M, Achhra AC, Landay A; for the INSIGHT SMART Study Group including **Sands, M**. Plasma levels of cytokines and chemokines and the risk of mortality in HIV-infected individuals: a case-control analysis nested in a large clinical trial. AIDS. 2015 Feb 18. [Epub ahead of print] PMID: 25695873

Taj Azarian; Robert L. Cook Judith A. Johnson; **Guzman, N**, Yvette S. McCarter, Noel Gomez, J. Glenn Morris Jr.; Marco Salemi Whole-genome sequencing for the investigation of methicillin resistant Staphylococcus aureus in the neonatal intensive care unit: Time for routine clinical practice? Accepted for Publication Infect Control and Hospital Epidemiology. January 2015

Hammond DA, Smotherman C, **Jankowski CA**, Tan S, Osian O, Kraemer D, DeLosSantos M. Short-course of ranolazine prevents postoperative atrial fibrillation following coronary artery bypass grafting and valve surgeries. Clin Res Cardiol. 2015; 104(5): 410-417.

Béténé A Dooko C, De Wit S, Neuhaus J, Palfreeman A, Pepe R, Pankow JS, Neaton JD; INSIGHT SMART including **Sands, M**; ESPRIT Study Groups. Interleukin-6, high sensitivity C-reactive protein, and the development of type 2 diabetes among HIV-positive patients taking antiretroviral therapy. *J Acquir Immune Defic Syndr*. 2014 Dec 15;67(5):538-46 PMID: 25393940

Peters L, Neuhaus J, Duprez D, Neaton JD, Tracy R, Klein MB, Mocroft A, Rockstroh J, Dore G, Lundgren JD; INSIGHT SMART Study Group including **Sands, M**. Biomarkers of inflammation, coagulation and microbial translocation in HIV/HCV co-infected patients in the SMART study. *J Clin Virol*. 2014 July; 60(3):295-300. PMID: 24793968

Abidi MZ, Sohail MR, Cummins N, Wilhelm M, Wengenack N, **Brumble L**, Shah H, Jane Hata D, McCullough A, Wendel A, Vikram HR, Kusne S, Litzow M, Letendre L, Lahr BD, Poeschla E, Walker RC. Stability in the cumulative incidence, severity and mortality of 101 cases of invasive mucormycosis in high-risk patients from 1995 to 2011: a comparison of eras immediately before and after the availability of voriconazole and echinocandin-amphotericin combination therapies. *Mycoses*. 2014 Nov; 57(11):687-98. Epub 2014 Jul 18. PMID:25040241. PMCID:4192082. DOI:10.1111/myc.12222.

Deshpande BR, Rao SR, Jentes ES, Hills SL, Fischer M, Gershman MD, Brunette GW, Ryan ET, LaRocque RC, Abraham GM, **Alvarez S**, Ansdell V, Yates JA, Atkins EH, Cahill J, Birich HK, Vitek D, Connor BA, Dismukes R, Fairley J, Kozarsky P, Dosunmu R, Goad JA, Mirzaian E, Kendall B, Hale D, Hynes NA, Jacquerioz F, McLellan S, Knouse M, Lee J, Oladele A, Demeke H, Pasinski R, Wheeler AE, Rosen J, Cabellon NN, Schwartz BS, Stauffer W, Walker P, Vinetz J. Use of Japanese encephalitis vaccine in US travel medicine practices in Global TravEpiNet. *Am J Trop Med Hyg*. 2014; 91(4):694-8.

Gomes DM, Smotherman C, Birch A, Dupree L, Della Vecchia BJ, Kraemer DF, **Jankowski CA**. Comparison of acute kidney injury during treatment with vancomycin in combination with piperacillin-tazobactam or cefepime. *Pharmacother*. 2014; 34(7): 663-669.

#### **Presentations:**

**Guzman, N**. Rapid Diagnostics Testing in Antimicrobial Stewardship, Annual First Coast Infectious Diseases and Microbiology Symposium, Renaissance Hotel, February 2015.

**Guzman, N**. Metabolic Complications of Antiretroviral Therapy, UF Internal Medicine Update, Hyatt Jacksonville, February 2015

**Guzman, N**. "Bugs and Drugs" Internal Medicine Conference July 15, 2014.

#### **Monographs and Book Chapters:**

**Guzman N**. Leptospirosis, BMJ Point of Care, E-pocrates electronic journal, 2009, revisions 2010, 2011, 2012, 2013, 2014; www. Pointofcare.bmj.com

**Guzman N**. Coxiella Burnetti, BMJ Point of Care, E-pocrates electronic journal 2009, revisions 2010, 2011, 2012, 2013, 2014; www. Pointofcare.bmj.com

Palnitkar R, **Sands M**. Mucormycosis. BMJ Point-of-Care 2009, updated 2014; www.pointofcare.bmj.com.

**Sands M**. Non-Cholera Vibrio infections. BMJ Point-of-Care 2009, updated 2014; www.pointofcare.bmj.com.

**Sands M**. Hantavirus infections. BMJ Point-of-Care 2009, updated 2014; www.pointofcare.bmj.com.

### CLINICAL ACTIVITIES

	<b>AY14/15</b>
<b>Inpatient activity</b>	
Consults	832
<b>Outpatient activity</b>	
Clinic Visits	1167

### GRANTS AND CONTRACTS

<b>Principal Investigator</b>	<b>Study Title</b>	<b>Project Period</b>	<b>Sponsor</b>
Sands, M.	START – Strategic timing of antiretroviral therapy – A multi-national study. NIH – INSITE network	12/1/10-5/31/15	INSIGHT - NIH
Guzman, N.	An international, multicenter prospective observational study of the safety of Maraviroc used with optimized background therapy in treatment experienced HIV-1 infected patients	10/23/08-10/6/15	ViiV Healthcare (formerly Pfizer)

**DIVISION OF NEPHROLOGY AND HYPERTENSION**  
**ACADEMIC YEAR 2015 (7/14 - 6/15)**

## Highlights

In the 2014 – 2015 academic year, the Division of Nephrology and Hypertension continued to make headway in meeting the goals of the academic mission.

In patient care, the offsite dialysis venture with DCI at the Gateway Unit has continued to expand the hemodialysis and peritoneal dialysis patient populations and services at that site. In education, the Nephrology fellowship proceeded to thrive with continuation of Simulation Training, the Pediatric Nephrology experience, and off-site Renal Transplant rotations. Dr. Leighton James continued to provide direction for the fellows' Renal Physiology Course. The joint Renal Pathology conference with Mayo Clinic Jacksonville continued as a successful and important piece of the educational program, as did the Transplant Rotation at Mayo Clinic Jacksonville. In addition, our annual Update in Nephrology & Hypertension CME Symposium was once again a success in 2015, with grant support from Dialysis Clinics Inc. and visiting professors from the University of Miami VAMC and Georgia Regents University. The division ARNP's continued their excellent care for our outpatient hemodialysis population. In addition, plans are underway for a Renal Clinic to begin at UF North in 2015.

Dr. James presented his growth factor research work on diabetic nephropathy at the American Society of Nephrology meeting. Dr. Ashwani Gupta, with a clinical research interest in dialysis, continued his roles in four clinical research trials, with topics including treatment of membranous glomerulonephritis, the P-DOPPS Study, the CARA Study and modeling of anemia management in hemodialysis patients. The laboratory of Dr. Charles Heilig continued with funded basic research studies into the pathogenesis of diabetic and nondiabetic glomerulosclerosis in mice, with a focus on the roles of Mechano-Growth Factor (MGF) and glucose transporters. Dr. Yongxin Gao, Assistant Scientist in the Nephrology Research Laboratories, continued her collaborative research work on MGF, glucose transporters and other growth factors in kidney disease. The Nephrology Research Laboratory also joined the recently formed University of Florida Diabetes Institute to contribute Type 2 diabetes research to the mission.

Fellows and faculty attended and participated in meetings of the American Society of Nephrology, the National Kidney Foundation, a national Home Dialysis Educational Seminar, the Update in Nephrology & Hypertension 2015 symposium and the UFCOM-J Research Day Symposium.

**Patient care:** The Division of Nephrology provides physician services and the medical director for two outpatient dialysis units and provides services to the inpatient UF Health acute hemodialysis unit. The newer Gateway Dialysis Unit in Jacksonville continues to grow with both hemodialysis and peritoneal dialysis services at that site. The Gateway Dialysis Unit has 24 hemodialysis chairs and approximately 80 patients. The total chronic dialysis population cared for by UFCOM-J Nephrologists has reached approximately 290 patients, hemodialysis and peritoneal dialysis patients included. Dr. Ashwani Gupta has nephrology clinics at Emerson Medical Plaza and is planned to attend at the upcoming UF North Renal Clinic. Additional faculty clinics are staffed at the Towers Clinic on campus by the Nephrology faculty members. The Nephrology clinics at the UF Health campus include the Nephrology Faculty Clinics, the Anemia Clinic, the Post-Renal Transplant Clinic, the Fellows' Continuity Clinics, the Correctional Facility Clinic, the HD Outpatient Center, the PD Clinic, and fellow participation in an associated Vascular Access Clinic located in the Department of Surgery. The inpatient Nephrology Consult Service continued with a high level of activity and a daily census of approximately 25-45 patients. This service was split into two separate services: Acute Renal Disease & Transplant Consults, and the Chronic Dialysis Consults. These services continue to provide important educational platforms for fellows, medical residents & students. Dr. Gupta continued as Medical Director of Dialysis Services, and has worked to continuously improve the dialysis services. Dr. Ronald Mars continued in his position as Quality Officer for the division.



The division successfully worked with the Department of Surgery to improve placement of permanent vascular access for patients preparing for hemodialysis, and improvements have been recognized toward goals of the Fistula First Program. The Post-Renal Transplant Clinic continued to serve as another platform for education of the fellows and care of patients previously transplanted at this program.

**Education:** Dr. Leighton James, Associate Professor of Medicine and Assistant Program Director from 2011–2013 initiated the fellows' Renal Physiology Course in 2010, which continues as an important addition to the nephrology educational experience. The joint Renal Pathology conference with UF Jacksonville and Mayo Jacksonville is teleconferenced with Mayo Rochester and has continued to be an important educational component for the Nephrology Fellowship program. The Update in Nephrology & Hypertension 2015 CME Symposium provided by the division was well attended and well received. This is an important educational venue for fellows and faculty alike. The division plans another course in the spring of 2016. Visiting professors Dr. Leopoldo Raij, Dr. Stanley Nahman and Dr. Ronald Falk provided special lectures in renal physiology, molecular biology and glomerulonephritis during the academic year, which complemented the fellows' educational program. The Nephrology faculty continue to participate in educational programs for the Medicine residents, including the Night Float Rotation, Medicine Residents' Noon Conference, Nephrology Clinics & the Nephrology Consult Rotation. The Mayo Clinic Jacksonville Renal Transplant Rotation for UF-Jacksonville Nephrology fellows continued successfully and complements the Nephrology training program at UF Health. The ACGME-required milestones have been incorporated into the fellowship training program and rotation evaluations.

**Research:** The topics of research studies in the division spanned from anemia management in dialysis patients, dialysis catheter studies, and peritoneal dialysis practices & outcomes, to glucose transporter & growth factor roles in diabetic renal disease, nondiabetic glomerular disease and renal transplant rejection.

Dr. Heilig's laboratory focuses on glucose transporter regulation of glomerulosclerosis, and more recently on a potential role for Mechano-Growth Factor (MGF) in both diabetic and nondiabetic kidney disease. This laboratory continues to be funded by DCI, Inc. Dr. James' laboratory focuses on growth factors in the pathogenesis of diabetic nephropathy. Dr. Gupta's research primarily focuses on research in anemia management of ESRD, dialysis access hemodynamics, PD practice patterns, and anti-complement therapy in renal disease. Dr. Mars' research focuses on the efficacy of different brands/types of hemodialysis catheters in the outpatient setting.

The Nephrology fellows participated in various different research studies & scholarly activities as part of their research training. Fellows also attended and participated in research activities at the American Society of Nephrology Meeting, and the National Kidney Foundation Meeting. The Nephrology Division produced 3 publications, and 16 abstracts and presentations. There were also two active grants this year (Research & Education grants).

### **Special Initiatives:**

Nephrology & Hypertension Annual Update, Jacksonville, FL: This year's meeting organized by the UFCOM-Jacksonville Division of Nephrology was held at the Hyatt Regency Hotel in Jacksonville with strong attendance by local healthcare professionals, and was well received. This yearly meeting provides education and CME credits for doctors, nurses and others involved in the care of patients with renal disease.

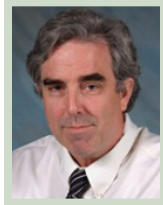
Nephrology Fellows' QI Project in Dialysis: Dr. Gupta directs this important activity which helps to fulfill the ACGME – required competency requirements.

Nephrology Fellows' Patient Safety Project: This Fistula-First Project includes, but is not limited to, fellow tracking of AV-fistula placement and outcomes from the time of referral to dialysis initiation and beyond. Goals include optimizing AVF function for initiation of dialysis and reduction of vascular access complications once dialysis has begun.

**Simulation Laboratory Experience:** The Nephrology fellows received Institutional Patient Safety Training in the Simulation Laboratory. They also participated in the yearly simulation laboratory experience for temporary hemodialysis catheter placement.

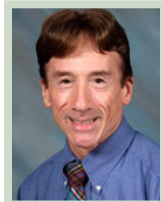
**Fistula First Initiative:** Faculty and fellows continue to participate in this QI and patient safety initiative, aimed at improving patient outcomes on hemodialysis.

### LISTING OF FACULTY MEMBERS



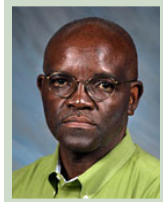
**Charles Heilig, M.D., Professor, Division Chief**

Medical School / Graduation date	University of Minnesota	1984
Internship/residency and year	Mayo Clinic Rochester	1987
Subspecialty training and year	Brigham and Women's Hospital, Harvard Medical School	1990



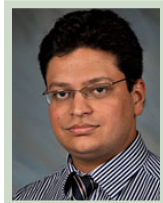
**Ronald Mars, M.D. Associate Professor**

Medical School / Graduation date	St Louis University	1972
Internship/residency and year	Emory University	1976
Subspecialty training and year	Emory University	1978



**Leighton James, M.D., Associate Professor**

Medical School / Graduation date	University of Toronto	1994
Internship/residency and year	University of Toronto	1997
Subspecialty training and year	University of Toronto	1999



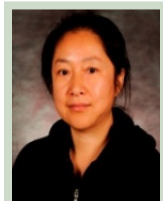
**Ashwani Gupta, M.D., Assistant Professor**

Medical School / Graduation date	All India Institute of Medical Sciences	2003
Internship/residency and year	Michigan State University	2008
Subspecialty training and year	Henry Ford Hospital	2010



**Andreea Poenariu, M.D., Assistant Professor**

Medical School / Graduation date	University of Medicine & Pharmacy Victor Babes, Romania	1998
Internship/residency and year	New York Downtown Hospital, Cornell Affiliated	2010
Subspecialty training and year	Brown University	2012



**Yongxin Gao, M.D., Assistant Scientist**

Medical School/Graduation date	Jiamusi Institute of Medicine, China	1991
Postdoctoral training and year	Department of Pharmacology, University of Florida	2011

## PUBLICATIONS

### Manuscripts:

Baldeo C, Ali R, Hritani A, Poenariu A. ANCA-Negative Pauci-Immune Crescentic Glomerulonephritis Linked with Non-Small Cell Carcinoma of the Lung. *Case Rep Nephrol Dial*. 2015 Jul 4;5(2):168-72.

Ramoutar V, Landa C, James LR. Acute tubular necrosis (ATN) presenting with an unusually prolonged period of marked polyuria heralded by an abrupt oliguric phase. *BMJ Case Rep*. 2014 Aug 22.

Brookins SM, Ormenisan C, Makary R, Monteiro C, James LR. The Lumpy Bumpy Kidney. *Kidney Int*. In Press.

### Abstracts & Presentations:

Gao Y, Heilig K, Pravtcheva D, Brifkani Z, Heilig C. Development of an In Vitro Mesangial Cell (MC) Model for Progressive Glomerulosclerosis (GS) by Disruption of the ANAPC-10 Gene in Fvb Mice. Poster Presentation: JASN 25 (Abstr. Suppl.): 482A, 2014.

Gao Y, Heilig K, Brifkani Z, Atta M, Heilig C. Mechano-Growth Factor Regulation of Mesangial Cell Growth and Extracellular Matrix Protein Expression: Implications for Diabetic Nephropathy. Poster Presentation: JASN 25(Abstr. Suppl.): 482A, 2014.

Brifkani Z, Makary R, Gao Y, Nahman NS, Monteiro C, Heilig C. Mechano-Growth Factor and VEGF Expression are Increased in Glomeruli of Chronic Allograft Rejection Kidneys, and via GLUT1 may Promote Glomerulosclerosis. Poster Presentation: JASN 25 (Abstr. Suppl.): 360A, 2014.

Brookins S, Ormenisan C, Makary RF, Monteiro CB, James LR. Case report of a rare finding of Sarcoid Granulomatous Glomeruli Nephritis. Poster Presentation: JASN 25 (Abstr. Suppl.): 515A, 2014

Garg S, Bahri NS, James LR. A Rare cause of Wide anion Gap Metabolic Acidosis in Uncommon Calcific Uremic Arteriopathy. Poster Presentation: JASN 25 (Abstr. Suppl.): 285A, 2014

Garg S, Bahri NS, Makary RF, Monteiro CB, James LR. Red Urine and Elusive Renal Failure. Poster Presentation: JASN 25 (Abstr. Suppl.): 516A, 2014.

Bahri NS, Makary RF, James LR. Spontaneous, Persistent Hypotension as a Sentinel Event for Systemic AL Primary Amyloid with Multiple Organ Failure. Poster Presentation: JASN 25 (Abstr. Suppl.): 509A, 2014.

Gao Y, Heilig K, Makary R, Garrison B, Brifkani Z, Heilig C. Mechano - Growth Factor (MGF) is Expressed in Kidney and MGF-GLUT1 Interactions Promote Glomerulosclerosis (GS) in Diabetic and Nondiabetic Glomerular Disease. Poster Presentation and Oral Introduction at: Gordon Research Conference: Membrane Transport Proteins, Mount Snow, VT. 7/15/14.

Adam-Eldien R, Heilig CW. Minimal Change Disease on top of Lupus Nephritis Class II. Poster Presentation at: National Kidney Foundation Spring Clinical Meetings, Dallas, TX, 3/2015.

Torres- Miranda D, Mars R. Chronic Kidney Disease Associated Polyarteritis Nodosa: Report of an Unexpected Finding. Poster Presentation at: University of Florida College of Medicine-Jacksonville Research Day, 5/21/15.

Gupta A. Current Approached to the Evaluation and Management of the Patient with Nephrolithiasis. Oral presentation, Update in Nephrology & Hypertension Symposium, Jacksonville, FL., 6/2015.

James LR. Update on HIV Associated Nephropathy. Oral presentation. Update in Nephrology and Hypertension Symposium, Jacksonville, FL., 6/2015.

Mars, RL. Pathogenesis and Management of Metabolic Bone Disease in Chronic Kidney Disease. Oral presentation. Update in Nephrology and Hypertension Symposium, Jacksonville, FL., 6/2015.

Poenariu A. Overview of JNC-8 Hypertension Recommendations. Oral presentation. Update in Nephrology and Hypertension symposium, Jacksonville, FL., 6/2015.

Heilig CW. Diabetic Nephropathy: the RAAS and Beyond. Oral Presentation. Update in Nephrology and Hypertension symposium, Jacksonville, FL., 6/2015.

Heilig CW. Mechano-Growth Factor Roles in Diabetic & Nondiabetic Glomerulosclerosis. Oral Presentation at: Southern Salt, Water & Kidney Club Meeting, Lido Key, Florida, 12/2014.

## HONORS AND AWARDS

Heilig, Charles. European Horizon 2020 Research Grant Programme; Advisory Board Member, 2015 – 2020.

Heilig, Charles. World Congress of Diabetes & Metabolism; Organizing Committee, 2014.

Heilig, Charles. University of Washington Diabetes and Obesity Research Center, Grant Review Panel, 2014.

Heilig, Charles. University of Michigan, MDRTC Grant Program, Grant Review Panel, 2014

## CLINICAL ACTIVITIES

<b>Inpatient activity</b>	<b>AY 14/15</b>
Initial Inpatient Encounters	808
Inpatient dialysis treatments	3915
<b>Outpatient activity</b>	
Clinic visits	3258
Outpatient dialysis visits (full month)	3268

## CONTRACTS AND GRANTS

<b>Principal Investigator</b>	<b>Title</b>	<b>Project Period</b>	<b>Sponsor</b>	<b>Award Amount</b>
Heilig, C	Roles of GLUT1 & Glucose in the Progression of Nondiabetic Glomerulosclerosis	2/2012 – 1/2016	Dialysis Clinics Inc.	\$385,000
Mars, R	Update in Nephrology & Hypertension 2015	6/2015	Dialysis Clinics Inc.	\$30,000
Gupta, A	A Randomized, Placebo-Controlled, Parallel-Group, Double-Blind Study of H.P. Acthar® Gel (Acthar) in Treatment-Resistant Subjects with Persistent Proteinuria and Nephrotic Syndrome due to Idiopathic Membranous Nephropathy (iMN).	3/2012-7/2015	Questcor Pharmaceuticals	\$6,000
Gupta, A	Cara Study: A Double-Blind Randomized Placebo Controlled Study to Evaluate the Safety and Pharmacokinetics of Intravenous CR845 in Hemodialysis Patients, and its Safety and Efficacy in Hemodialysis Patients with Uremic Pruritus.	1/2015 6/2015	CARA	\$6,768.00
Gupta, A	A Randomized, Double-Blind, Placebo-Controlled, Dose Assessment Phase 2 Study to Evaluate the Safety and Efficacy of CCX168 in Subjects with Anti-Neutrophil Cytoplasmic Antibody (ANCA) – Associated Vasculitis.	1/2014 -Current	Chemo Centryx, Inc	\$4,000

**DIVISION OF PULMONARY, CRITICAL CARE AND SLEEP MEDICINE**  
**ACADEMIC YEAR 2015 (7/14 - 6/15)**

## Highlights

The Division of Pulmonary, Critical Care and Sleep Medicine has had continued growth after addition of Dr. Mariam Louis who joined the Division in November 2013. The fellowship training program continues to be popular with over 300 applications for the two available positions per year. Clinically, we have had continued growth with initiation of Pulmonary Disease clinic at UF North. Academically, the division continues to be productive in the areas of clinical and original research and publications. The faculty was involved as moderators for various sessions in Society of Critical Care Medicine, Pulmonary Hypertension Association and ATS conferences. The fellows, under the mentorship of faculty, are engaged in a number of clinical studies. The division has had a number of abstracts presented in national and international conferences and was represented in various regional meetings in the form of providing educational lectures.

**Patient care:** The division faculty staffs a number of specialized and general pulmonary clinics. The Asthma Clinic, under the supervision of Dr. Cury, continues to be a part of the American Lung Association Asthma Clinical Research Network and now is involved in industry funded clinical research in this arena. The division continues to be involved with the Pulmonary Rehabilitation program in conjunction with the Department of Physical Therapy.

Pulmonary Hypertension Clinic continues to be a regionally known referral center with patients being referred from regions all over the east coast. As member of the Pulmonary Hypertension Association, it is set to become a center of comprehensive care. The clinic currently manages over 200 pulmonary hypertension patients. Performing right heart catheterizations in the bronchoscopy suite has led to excellent patient through put. The program is preparing to undergo certification as a Center of Comprehensive Care (CCC) under Pulmonary Hypertension Association (PHA).

Janice Wood, RRT continues to be the Pulmonary Hypertension and ILD Program Coordinator.

Under Dr. Jones' supervision, the Interstitial Lung Disease and Sarcoidosis clinic continues to expand and is involved in clinical trials in the area of IPF.

The fellows' continuity clinic is staffed by at least 5 fellows once a week and supervised by faculty. The number of pulmonary function tests performed has also accordingly increased.

Thoracic Oncology Clinic continues its multidisciplinary approach to patients with thoracic malignancy. The division successfully initiated the lung cancer screening program. The already extensive interventional pulmonary program acquired a radial ultra sound probe for peripheral lung lesions.

The division, under the leadership of Dr. Jones, is continuing its successful initiative for implementation of sepsis recognition and management protocol.

The inpatient pulmonary consult service continues to be busy and with the continued evolution of the bronchoscopy suite and the number, efficiency and timeliness of bronchoscopic procedures offered by the division were enhanced.

**Education:** At a regional level, the division gained recognition with leadership roles in South East Thoracic Association affiliated with American Lung Association. The organization conducts state of the art educational conference twice per year (The Pulmonary Winter Course and the Tri-State Conference) which is well attended by participants from the region of Florida, Georgia and South Carolina.

The division continues to play an active role in educational core lecture series including Grand Rounds and Updates in Internal Medicine 2014-2015. The division faculty also has an active role in the educational lectures for a variety of residency programs including emergency medicine, obstetrics, internal medicine and trauma critical care. Drs. Cury, Bajwa and Seeram were honored with the Exemplary Teacher Award. The pulmonary and critical care fellowship program, under the direction of Dr. Cury as Program Director, has been doing extremely well. The board pass rate is 100%. Dr. Shujaat continues to be the Associate Program Director and, along with Dr. Cury, is responsible for coordinating the educational activities for the fellowship. The fellows are regularly mentored by a faculty member in preparation and presentation of lectures.

The division was involved in various regional/national meetings with faculty representing the University of Florida College of Medicine-Jacksonville by providing educational lectures in various topics of interest.

The faculty continues to mentor and supervise family medicine residents from the Navy residency program during their rotation in medical intensive care unit and have always received very positive feedback from the leadership of that program. In addition, we have been active in training nurse practitioners and physician assistants not only from the University of Florida sponsored training programs but also for the nurse practitioners.

**Research:** The division has been very successful in obtaining and continuing its clinical research trials along with funded research. The funded research includes dean's grants, UF clinical quality grant and investigator initiated trials.

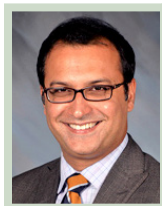
The number of internal unfunded clinical research protocols has also increased substantially resulting in quality abstracts being presented at national and international meetings.

A dedicated clinical research coordinator, Minal Patel, has enabled the division to participate in more hospital based clinical research protocols as well.

The faculty has had an increasing number of publications in peer review journals and has a number of manuscripts in preparation. Close collaboration with other departments with common research interests is the key to future protocols and publications.

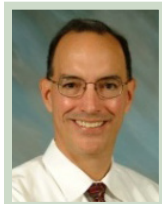
The focus of the division is to enhance collaboration with other departments and regional centers and continue to strive for excellence in this arena.

## LISTING OF FACULTY MEMBERS



### **Abubakr Bajwa, M.D., Associate Professor and Division Chief**

Medical School / Graduation date	King Edward Medical College	1998
Internship/residency and year	University of South Dakota	2003
Subspecialty training and year	Mayo Graduate School of Medicine	2007



### **James D. Cury, M.D., Associate Professor**

Medical School / Graduation date	University of Miami	1981
Internship/residency and year	Barnes Hospital/Washington	1984
Subspecialty training and year	Washington University	1987

**Lisa Jones, M.D., Assistant Professor**

Medical School / Graduation date	University of Cincinnati	1998
Internship/residency and year	University Hospital Cincinnati	2001
Subspecialty training and year	Naval Medical Center	2007

**Adil Shujaat, M.D., Assistant Professor**

Medical School / Graduation date	King Edward Medical College	1998
Internship/residency and year	St.Luke's Roosevelt Hospital Center	2003
Subspecialty training and year	St.Luke's Roosevelt Hospital Center	2006

**Mariam Louis, M.D., Assistant Professor**

Medical School / Graduation date	McGill University	2000
Internship/residency and year	McGill University	2003
Subspecialty training and year	McGill University (Pulmonary Medicine)	2005
	Johns Hopkins University (Sleep Medicine)	2007

**Vandana Seeram, M.D., Assistant Professor**

Medical School / Graduation date	University of West Indies	2001
Internship/residency and year	University of Florida/Jacksonville	2009
Subspecialty training and year	University of Florida/Jacksonville	2012

## PUBLICATIONS

### Manuscripts:

Lung cancer presenting as a soft-tissue metastasis. Baldeo C, Ali R, **Seeram V**, House J. Case Rep Oncol. 2015 Apr 16;8(1).

An unusual case of postpartum dyspnea. **Ramdass A, Qureshi T, Matharu J, Cury J, Seeram V**. Chest. 2015 Feb; 147 (2):e38-43.

Severe Pulmonary Arterial Hypertension: Comprehensive Evaluation by Magnetic Resonance Imaging. El-Sayed I, **Bajwa AA**. Accepted. Case Reports in Radiology.

Is there any association between PEEP and upper extremity DVT? Al-Saffar F, Gupta E, Siddiqi F, **Jones LM, Louis M, Seeram V, Cury JD, Bajwa AA, Shujaat A**. Crit Care Research and Pract. Vol. 2015, Article ID 614598, 5 pages, 2015. doi:10.1155/2015/614598.

A case of disseminated intravascular coagulation secondary to Acinetobacter lwoffii and Acinetobacter baumannii bacteremia. Baldeo C, Isache C, Baldeo C, **Bajwa AA**. ID Cases, Volume 2, Issue 3, 70 – 71.

Predicting the need for combination therapy. **Bajwa AA, Shujaat A, Cury JD, Bhatti H, Qureshi T, Jones LM, Seeram V**, Al-Saffar F. J Cardiovasc Pharmacol Ther. 2015 Jul;20(4):395-400.

An unusual case of iatrogenic haemoptysis. **Pal K, Seeram VK, Cury JD**. BMJ Case Rep. 2014 Jul 9;2014. pii: bcr2014204673. doi: 10.1136/bcr-2014-204673.

The Relationship of IV Fluid Chloride Content to Kidney Function in Patients with Severe Sepsis/Shock. Accepted Pending publication. Guirgis F, Williams DJ, Hale M, **Bajwa AA, Shujaat A**, Patel N, Kalynych CJ, Jones AE, Wears RL, Dodani S. Am Journal of Emerg Med. 2015 Mar;33(3):439-43.

Effect of PAH Specific Therapy on Pulmonary Hemodynamics and Six-Minute Walk Distance in Porto pulmonary Hypertension: A Systematic Review and Meta-Analysis. Muhammad F, Siddiqui F, Alkaddour **A, Bajwa AA, Shujaat A**. Pulmonary Medicine, vol. 2014, Article ID 528783, 7 pages, 2014. doi:10.1155/2014/528783.

A phase 3 trial of pirfenidone in patients with idiopathic pulmonary fibrosis. King TE Jr, Bradford WZ, Castro-Bernardini S, Fagan EA, Glaspole I, Glassberg MK, Gorina E, Hopkins PM, Kardatzke D, Lancaster L, Lederer DJ, Nathan SD, Pereira CA, Sahn SA, Sussman R, Swigris JJ, Noble PW; ASCEND Study Group. *N Engl J Med*. 2014 May 29; 370 (22):2083-92. **Bajwa AA** (Study collaborator).

Use of endobronchial ultrasound to evaluate non-thrombotic endovascular lesions in pulmonary arteries- a systematic review. **Shujaat A**, Al-Saffar F, Ibrahim S, **Seeram V**, **Bajwa AA**. *J Bronchology Interv Pulmonol*. 2015 Jan; 22 (1):28-32.

Use of Pulmonary Arterial Hypertension-Specific Therapy in Non-WHO Group I Pulmonary Hypertension. **Shujaat A**, **Bellardini J**, **Cury JD**, **Bajwa AA**. *South Med J*. 2015 Jan;108 (1):51-7.

Inflammatory pseudo tumor of the pleura. **Girdhar A**, **Singh A**, **Bajwa AA**, **Shujaat A**. *J Bronchology Interv Pulmonol*. 2014 Apr; 21(2):154-7.

Use of pulmonary arterial hypertension specific therapy in over-weight and obese patients with obstructive sleep apnea and pulmonary hypertension. **Shujaat A**, **Bellardini J**, **Girdhar A**, **Bajwa AA**. *Pulm Circ*. 2014 Jun; 4 (2):244-9.

#### **Presentations:**

Factors related to failure Of Non-invasive Positive Pressure Ventilation (NIPPV) leading to invasive mechanical ventilation. **Bhatti H**, **Yaqoob M**, **Ramdass A**, **Cury JD**, **Shujaat A**, **Seeram V**, **Jones LM**, **Bajwa AA**. Abstract American Thoracic Society, San Diego, CA 2014.

Use of inhaled Epoprostenol for ARDS. **Singh A**, **Shujaat A**, **Jones LM**, **Seeram V**, **Cury JD**, **Bajwa AA**. Abstract American Thoracic Society, San Diego, CA 2014.

Efficacy and safety of thrombolysis in pulmonary embolism: a meta-analysis. **Shujaat A**, **Bajwa AA**. - American College of Chest Physician, Austin, TX, 2014.

Diagnostic accuracy of trans-esophageal echocardiography in suspected central pulmonary embolism- a meta-analysis. **Shujaat A**, **Najjar N**, **Bajwa AA**. American College of Chest Physician, Austin, TX, 2014.

Effects of PAH specific therapy on pulmonary hemodynamics and six minute walk distance in pulmonary hypertension secondary to interstitial lung disease: a meta-analysis. **Shujaat A**, **Mourad B**, **Bajwa AA**. American College of Chest Physician, Austin, TX, 2014.

A Case of LIP Pleural Effusion in HIV. **Bashar M**, **Bhatti H**, **Shujaat A**, **Bajwa AA**. American College of Chest Physician, Austin, TX, 2014.

Efficacy and Safety of Thrombolysis in Pulmonary Embolism: A Meta-analysis. **Shujaat A**, **Bajwa AA**. American College of Chest Physician, Austin, TX, 2014.

The impact of inhaled treprostinil sodium inhalation on ventilation perfusion matching when used in patients with group 1 PAH with concomitant COPD. **Bajwa AA**, **Patel M**, **Rahaghi F**, **Thomas C**, **Burger CD**. American Thoracic Society. 2015, Denver, CO.

Post-Operative Proton Therapy for Resected Non-Small Cell Lung Cancer. Deraniyagala R, Hoppe B, Morris CG, Pham D, D'Agostino H, **Bajwa AA**, Nichols R. *American Society for Radiation Oncology (ASTRO)*. 2015, San Antonio, TX.

Effect of Positive End-Expiratory Pressure (PEEP) on Development of Upper Extremity Deep Venous Thrombosis in Mechanically Ventilated Medical Intensive Care Unit (ICU) Patients. **Al-Saffar F**, **Gupta E**, **Siddiqi F**, **Jones LM**, **Louis M**, **Seeram V**, **Cury JD**, **Bajwa AA**, **Shujaat A**. American Thoracic Society. 2015, Denver, CO.

Autologous Blood Patch Pleurodesis for Persistent Air-Leak from Secondary Spontaneous Pneumothorax: A Systematic Review. **Kapoor S**, **Al-Saffar F**, **Bajwa AA**, **Shujaat A**. American Thoracic Society. 2015, Denver, CO.

NICOM predicted stroke volume correlated with changes in 6 MWD in PAH population. **Bajwa AA**, **Gupta E**, **Louis M**, **Jones LM**, **Shujaat A**, **Cury JD**, **Seeram V**. American Heart Association 2015.

Effect of Aspirin on prevention of venous thromboembolism in critically ill mechanically ventilated patients. **Gupta E**, **Bajwa AA**, **Shujaat A**. American College of Chest Physician 2015, Montreal, Canada.

Effect of PAH specific therapy on pulmonary hemodynamics and 6 minute walk distance in chronic thromboembolic pulmonary hypertension: a meta-analysis. **Faisal M**, **Bajwa AA**, **Shujaat A**. American College of Chest Physician 2015, Montreal, Canada.



**HONORS AND AWARDS**

Lisa M Jones M.D.	Exemplary Teacher Awards	2015
Abubakr A Bajwa M.D.	Exemplary Teacher Awards	2015
Vandana Seeram M.D.	Exemplary Teacher Awards	2015

**CLINICAL ACTIVITIES**

	<b>AY 14/15</b>
<b>Inpatient activity</b>	
Initial IP Encounters	705
<b>Outpatient activity</b>	
Clinical Visits	5357
<b>Procedures</b>	
Bronchoscopies	720
Sleep Studies	1079

**CONTRACTS AND GRANTS**

<b>Principal Investigator</b>	<b>Study Title</b>	<b>Project Period</b>	<b>Sponsor</b>	<b>Award Amount</b>
Bajwa, AA	A Post marketing Observational Study to Assess Respiratory Tract Adverse Events in Pulmonary Arterial Hypertension Patients Treated with Tyvaso® (treprostinil) Inhalation Solution (ASPIRE)	3/16/12 – 3/16/18	United Therapeutics	60,217.75
Bajwa, AA	Phase 3 study of efficacy and safety of Pirfenidone in idiopathic pulmonary fibrosis. (ASCEND).	9/20/11-9/20/14	Intermune	80,095.75
Bajwa, AA	Randomized, double-blind, placebo-controlled study of the safety, tolerability, pharmacokinetics and pharmacodynamics of ascending repeated doses of SAR156597 in patients with idiopathic pulmonary fibrosis (IPF) TDR11326	8/24/12-8/23/15	Sanofi-Aventis	23,072.00
Bajwa, AA	An Open-Label Extension Study of the Long-Term Safety of Pirfenidone in Patients with Idiopathic Pulmonary Fibrosis (IPF)	7/29/11-7/29/17	Intermune	18,395.30
Bajwa, AA	GS-US-322-0207 (RAINIER) A Phase 2 study for subjects with Idiopathic Pulmonary Fibrosis	1/30/13-1/29/16	Gilead	62,121.20
Bajwa, AA	MOTION, Measuring Outcomes in Treatment Naive Patients	1/6/15-1/5/18	Bayer	2,737.15
Bajwa, AA	SYMPHONY: A Study Of Macitentan In Pulmonary Arterial Hypertension To Validate The PAH-SYMPACT	12/23/13-12/22/17	Actelion	14,390.00
Bajwa, AA	A 16-Week, International, Multicenter, Double-Blind, Randomized, Placebo-Controlled Comparison of the Efficacy and Safety of Oral UT-15C Sustained Release Tablets in Subjects with Pulmonary Arterial Hypertension on background therapy	10/10/13-10/9/16	United Therapeutics	51,170.00
Bajwa, AA	A treatment protocol to allow patients in the US with IPF access to Pirfenidone	7/8/14-7/17/17	Intermune	12,860.00
Bajwa, AA	A multicenter, doubled-blind, randomized, placebo-controlled, Phase 3 study to assess the efficacy and safety of oral BPS-314d-MR Added-on to treprostinil, inhaled (Tyvaso ®) in subjects with pulmonary arterial hypertension. (BEAT)	10/10/13-10/9/16	United Therapeutics	51,170.00
Cury JD	A Clinical Outcomes Study to compare the effect of Fluticasone Furoate/Vilanterol Inhalation Powder 100/25mcg with placebo on Survival in Subjects with moderate Chronic Obstructive Pulmonary Disease (COPD) and a history of or at increased risk for cardiovascular disease	1/7/2013-9/7/2015	Glaxo Smith Kline	74,527.50
Jones LM	Implementation of a protocol, for early identification and management of sepsis, severe sepsis/septic shock patients -An institution wide multidisciplinary collaborative.	7/2012-9/2015	UF Clinical Quality Award Grant	25,000.00

**DIVISION OF RHEUMATOLOGY AND CLINICAL IMMUNOLOGY**  
**ACADEMIC YEAR 2015 (7/14 - 6/15)**

## Highlights

The Division of Rheumatology and Clinical Immunology had a successful and productive academic year on multiple levels. Despite significant challenges, we have seen some of the fruits of our dedication to the University of Florida College of Medicine–Jacksonville (UFCOM-J) mission. We are grateful for the continued guidance of our leadership, including the education deans, as well as our chairman, Dr. Arshag Mooradian. The division had significant accomplishments in patient care, research and education.

The division successfully graduated the third rheumatology fellow in June 2015, from its UFCOM-J Rheumatology Fellowship training program. Of note the prior two fellows are not only ABIM board certified in Rheumatology, but also successfully attained the American College of Rheumatology RhMSUS certification for musculoskeletal ultrasound. In addition, the graduating fellow, Dr. Laurie Ramrattan successfully attained the International Society of Clinical Densitometry (ISCD) clinical certification in Densitometry during her final year. The division will plan to reapply for fellowship with increased faculty numbers in the next academic year. Meanwhile, we continue to work with other training programs and the GME office at UFCOM-J in order to provide mentoring and teaching for many students and residents who are interested in our specialty. The division organized the sixth extremely successful annual CME musculoskeletal ultrasound sound training course. It was attended by national and international Rheumatologists as well as fellows in training.

Dr. Thway joined the Division in February 2015. She is a specialist in Internal Medicine and Clinical Immunology and Rheumatology. Dr. Thway serves as Assistant Professor at the University of Florida, College of Medicine–Jacksonville. She received her medical degree from the Institute of Medicine in Yangon, Myanmar, and completed her fellowship training at the University of Miami, Miller School of Medicine. Prior to this, she had served as a clinical educator at the same institution. She has special interest in Systemic Lupus Erythematosus as well as resident education and clinical research.

Currently, the division is planning an expansion by recruiting more faculty members. However, the backbone to our success is the loyal and hardworking staff at our clinics, hospital and administrative offices.

**Patient care:** Despite faculty reduction, we were able to maintain our clinical volume and growth. Patients with numerous medical conditions including, but not limited to, many types of arthritis, lupus, scleroderma, myositis, autoimmune and systemic diseases, osteoporosis, connective tissue diseases related to inflammation and metabolic dysfunction, soft tissue conditions and pain such as fibromyalgia. We continue to be on the forefront of providing the very up to date rheumatology services and 24/7 consultations at UF Health Jacksonville, the Ambulatory Care Clinic and our dedicated outpatient clinic on Emerson Street. The division also provides musculoskeletal ultrasound services related to rheumatologic care both for inpatient and outpatient settings.

In the outpatient setting, we provide full rheumatology coverage from Monday through Friday, where we provide diagnostic musculoskeletal ultrasound and musculoskeletal procedures under ultrasound guidance.

Excellence is our only goal when it comes to patient care. Our faculty members achieved or exceeded the average in our specialty and in comparison to others at our institution. We touch our patients' lives during some of the most vulnerable moments they will ever encounter alone or with their loved ones. As physicians of the UFCOM-J, we always strive for excellence in our practice.

**Education:** Education is one of the main missions at the UFCOM-J. Our faculty members have been very dedicated and creative in delivering the best of what they can offer to our students and residents. Our achievements in education were highlighted in multiple venues but the rheumatology fellowship program

was a major cornerstone in the growth and development of our academic program.

The Rheumatology Fellowship started in July 2011. It has graduated three fellows. Dr. Laurie Ramrattan graduated in June 2015 and has gone to Trinidad to practice Rheumatology. The fellowship provided a strong clinical focus as well as many opportunities in clinical research, quality improvement as well as musculoskeletal ultrasound. The fellowship had accreditation until July 2015. The division will re-apply for fellowship in the next academic year.

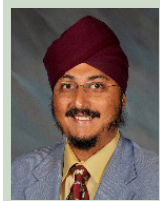
In the educational program of the University of Florida medical students and residents, Dr. Taba, Dr. Thway and Dr. Kaeley participated in precepting clinics in rheumatology and delivered core curriculum lectures for the Internal Medicine Residency Program at the UFCOM-J. The rheumatology faculty members participated in internal medicine Grand Rounds and shared the knowledge of their invited rheumatology speakers on a regular basis.

The sixth Musculoskeletal Ultrasound Course in February 2015 was a great success. This was a 3-day CME hands-on training course that uniquely utilized our state of the art simulation laboratory at the UFCOM-J. Dr. Kaeley organized the course, as well as serving as faculty providing lectures and practical ultrasound instruction. Dr. Thway served as the course assistant, as well as anatomy prosector and instructor. The course was attended by rheumatology educators and fellows from 28 States, as well as from Canada. The attendees were very complimentary of the innovative cadaver-based curriculum held in the UFCOM-J CSESaR Simulation Center. The division also hosted the Canadian Rheumatology Ultrasound Society (CRUS) Teach the Teachers Course in interventional musculoskeletal ultrasound, which was held at the CSESaR Simulation Center. It was received very well and was featured in the Canadian Society of Rheumatology newsletter. The division is grateful for the hard work of the simulation staff in making the courses such a success. The division also continues to be heavily involved with musculoskeletal ultrasound training at the national and international levels. The division has also been deeply involved in musculoskeletal ultrasound advocacy by assisting the American College of Rheumatology and Florida Society of Rheumatology in coordinating efforts to interact with Medicare representatives.

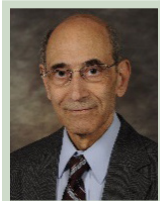
E-Learning is an entrepreneur unique project that was pioneered by Dr. Kaeley. The aim of this project is to develop electronic learning content to cover basic Rheumatology Core Curriculum, as well as musculoskeletal ultrasound training material. Internal Medicine Residents need to assimilate core knowledge rapidly in order to gain the most out of the clinical Rheumatology rotations. This is now being developed as a blended learning project for the Rheumatology fellows as well as rotating internal medicine residents. Starting in June 2013, a blended learning system was introduced under the leadership of Dr. Kaeley for the Rheumatology Fellowship utilizing Canvas as a learning management system.

**Research:** The division has been growing its research enterprise. Although the division is active in numerous pharmaceutical trials, its emphasis is to develop investigator initiated trials as well as to seek grants. The division is collaborating with Center for Health Equity and Quality Research (CHEQR), as well as the UF Health Cardiology division. Projects so far have included studying cardiovascular health in Caucasian cocaine abusers, as well as correlating dysfunctional HDL with other imaging and cardiovascular biomarkers in South Asians. Dr. Kaeley was awarded the Dean's Grant for the study on cardiovascular markers in South Asians. The division is actively collaborating with the University of California, Los Angeles Division of Rheumatology in a bi-center prospective trial of Tocilizumab in Rheumatoid Arthritis, utilizing Power Doppler as a secondary outcome measure. The division has also been evaluating Medicare Expenditures for Musculoskeletal Ultrasound as well as drug utilization. Members of the division are closely involved with the Outcome in Clinical Rheumatology Trials (OMERACT) musculoskeletal ultrasound group and is leading the project at developing sonographic outcome tools in psoriatic arthritis and dactylitis.

## LISTING OF FACULTY MEMBERS

**Gurjit S Kaeley, M.B.B.S., Associate Professor and Chief**

Medical School/Graduation date	The London Hospital Medical College, London, UK	1990
Internship/residency and year	University of Tennessee College of Medicine	1996
Subspecialty training and year	University of Tennessee College of Medicine	1998

**Reza Taba, M.D., Assistant Professor**

Medical School/Graduation date	University of Isfahan	1970
Internship/residency and year	Medical College of Ohio	1976
Subspecialty training and year	University of Louisville School of Medicine	1978

**Myint Thway, M.D., Assistant Professor**

Medical School/Graduation date	Institute of Medicine, Yangon, Myanmar	2000
Internship/residency and year	Lutheran Medical Center, New York	2009
Subspecialty training and year	University of Miami, Miller School of Medicine	2014

## PUBLICATIONS

**Manuscripts:**

International Consensus for Ultrasound Lesions in Gout: Results of Delphi Process and Web-Reliability Exercise. Gutierrez M, Schmidt WA, Thiele RG, Keen HI, **Kaeley GS**, Naredo E, Iagnocco A, Bruyn GA, Balint PV, Filippucci E, Mandl P, Kane D, Pineda C, Delle Sedie A, Hammer HB, Christensen R, D'Agostino MA, Terslev L; OMERACT Ultrasound Gout Task Force group. *Rheumatology (Oxford)*. 2015 May 13. pii: kev112. [Epub ahead of print] PMID: 25972391

Bruyn GA, Naredo E, Iagnocco A, Balint PV, Backhaus M, Gandjbakhch F, Gutierrez M, Filer A, Finzel S, Ikeda K, **Kaeley GS**, Magni Manzoni S, Ohrndorf S, Pineda C, Richards B, Roth J, Schmidt WA, Terslev L, D'Agostino MA; OMERACT Ultrasound Task Force. The OMERACT Ultrasound Working Group 10 Years On: Update at OMERACT 12. *J Rheumatol*. 2015 Mar 15. PMID: 25774059.

Berianu F, Abril A, Jalandhara P, **Kaeley G**. More Than Meets the Eye. *J Clin Rheumatol*. 2015 Mar; 21(2):104. PubMed PMID: 25710865.

Jans L, Jaremko JL, **Kaeley GS**. Novel Imaging Modalities in Spondyloarthritis. *Best Pract Res Clin Rheumatol*. 2014 Oct; 28(5):729-45. Epub 2014 Nov 4. PubMed PMID: 25488781.

Evangelisto AM, Nishio MJ, Higgs JB, Kissin EY, **Kaeley GS**. Musculoskeletal Ultrasound and Anatomy: Comment on the article by Navarro-Zarza et al. *Arthritis Care Res (Hoboken)*. 2014 Apr 11.

**Book Chapters:**

**Kaeley GS**, Sonography of the Shoulder. In Press: Book Chapter in *Musculoskeletal Ultrasound in Rheumatology Review*, 1st Edition. Editors: Minna Kohler. 2015

**Kaeley GS**, Sonography of Dactylitis and Psoriatic Arthritis. In Press: Book Chapter in *Essential Applications of Ultrasound in Rheumatology*, 2nd Edition. Editors: Richard Wakefield and Maria-Antonietta D'Agostino. 2015

**Electronic Publication Monographs:**

**Kaeley GS**, RA Ultrasound Module 2: The Evolving Role of Ultrasound in the Diagnosis and Management of Rheumatoid Arthritis. January 2014 – January 2015. (<http://opencme.org/RA-US/Module2>).

**Kaeley GS**, RA Ultrasound Module 3: The Evolving Role of Ultrasound in the Diagnosis and Management of Rheumatoid

Arthritis. January 2014 – January 2015. <http://openmme.org/RA-US/Module3>

#### Abstracts Presented:

**Kaeley GS**, MacCarter D, Griffith J, Garg V, Kupper H, Kalabic J. Similar Improvements in Quality of Sleep, Satisfaction with Medication and Sexual Impairment Among Rheumatoid Arthritis Patients Upon Initiation of Adalimumab in Combination with Two Doses of Methotrexate. Poster presentation at the Annual European Congress of Rheumatology. Rome, Italy. June 2015. *Ann Rheum Dis* 2015; 74:Suppl 2 704-705

**Kaeley GS**, Nishio MJ, Goyal JR, MacCarter D, Wells AF, Cardoso A, Liu S, Kalabic J, Kupper H. The Use of Ultrasound to Detect Residual Joint Inflammation in Patients with Rheumatoid Arthritis in Clinical Disease Remission. Poster presentation at the Annual European Congress of Rheumatology. Rome, Italy. June 2015. *Ann Rheum Dis* 2015;74:Suppl 2 447-448

**Kaeley GS**, Monticalvo D, Smotherman C, Lukens-Bull K, Dodani S. Diagnostic Musculoskeletal Ultrasound (MSK-US) Use Lags MSK-MRI Utilization in USA. Abstracts Accepted for Publication - Diagnostics and imaging procedures. Annual European Congress of Rheumatology. Rome, Italy. June 2015. *Ann Rheum Dis* 2015;74:Suppl 2 1252

Sulliman Y, Ranganath VK, Taylor M, Ben-Artzi A, Olmos CP, Brook J, Elashoff D, Ramrattan L, **Kaeley GS**. Reliability of Musculoskeletal Ultrasound (MSK-US) in Rheumatoid Arthritis (RA) Multicenter Trials: Lessons Learned. Poster presentation at the Annual European Congress of Rheumatology. *Ann Rheum Dis* 2015;74:Suppl 2 441

Ramrattan LA, **Kaeley GS**. Vaccination Rates in Rheumatoid Arthritis Patients on Biological Disease Modifying Anti-Rheumatic Drugs. Poster Presentation at Education Day, University of Florida College of Medicine, Jacksonville, April 2015.

**Kaeley GS**, Nishio MJ, Goyal JR, MacCarter DK, Wells AF, Cardoso A, Shufang L, Kalabic J, Kupper H. The Use of Ultrasound to Detect Residual Joint Inflammation in Patients with Rheumatoid Arthritis in Clinical Disease Remission. Poster Presentation at the American College of Rheumatology Annual Meeting, Boston, MA. November 2014.

**Kaeley GS**, Nishio MJ, MacCarter DK, Griffith J, Kupper H, Kalabic J. Similar Improvements in Physical Function, Quality of Life and Work Productivity Among Rheumatoid Arthritis Patients Treated with 2 Different Doses of Methotrexate in Combination with Adalimumab. Poster Presentation at the American College of Rheumatology Annual Meeting, Boston, MA. November 2014.

Burmester G, **Kaeley GS**, Curtis JR, Yazici Y, Guerette B, Wang X, Friedman A, Strand V. The Use of Week 12 CDAI, RAPID3 and DAS28 (CRP) Responses to Predict Optimal Response to Methotrexate. Poster Presentation at the American College of Rheumatology Annual Meeting, Boston, MA. November 2014.

**Kaeley GS**, Evangelisto AM, Nishio JM, Liu S, Kupper H. Impact of Methotrexate Dose Reduction Upon Initiation of Adalimumab on Clinical and Ultrasonographic Parameters in Patients With Moderate to Severe Rheumatoid Arthritis. BSR (2014) British Society for Rheumatology - 2014 Annual Meeting, Liverpool, United Kingdom.

#### Activities and Presentations:

**Kaeley GS** Psoriatic Arthritis - Sonographic Insights. Mount Sinai Hospital, Toronto. June 2015.

**Kaeley GS** Sonography of Crystal Arthropathies. Canadian Rheumatology Ultrasound Society Course. McMaster University, Hamilton, ON. June 2015.

**Kaeley GS** Sonographic Guidance for Joint and Soft Tissue Injections. Canadian Rheumatology Ultrasound Society Course. McMaster University, Hamilton, ON. June 2015.

**Kaeley GS** Review of Hip Standard Scans. Canadian Rheumatology Ultrasound Society Course. McMaster University, Hamilton, ON. June 2015.

**Kaeley GS** Review of Shoulder Standard Scans. Canadian Rheumatology Ultrasound Society Course. McMaster University, Hamilton, ON. June 2015.

**Kaeley GS** Psoriatic Arthritis. Mayo Clinic Rheumatology Update, Ponte Vedra Beach, FL. April 2015.

**Kaeley GS** Musculoskeletal Imaging in Rheumatoid Arthritis. Mayo Clinic Rheumatology Update, Ponte Vedra Beach, FL. April 2015.

**Kaeley GS** Ultrasound Joints, Tendons and Enthesia - lecture and workshop. Spartan-Grappa symposium. Tampa, FL. April 2015.

**Kaeley GS** Clinical Features of Spondyloarthropathies. Spartan-Grappa symposium. Tampa, FL. April 2015.

**Kaeley GS** Outcome Measures in Spondyloarthropathy. Spartan-Grappa symposium. Tampa, FL. April 2015.

**Kaeley GS** Upper and Lower Extremity Ultrasound Guided Injections. Canadian Rheumatology Ultrasound Society Musculoskeletal Ultrasound Interventional Course. Jacksonville, FL. Mar 2015.

**Kaeley GS** Canadian Rheumatology Ultrasound Society Musculoskeletal Ultrasound Interventional Course. Director, tutor and demonstrator. Jacksonville, FL. Mar 2015.

**Kaeley GS** Ultrasound Scoring in Rheumatoid Arthritis. Canadian Rheumatology Ultrasound Course, King Saud College of Medicine, Riyadh, Saudi Arabia. Jan 2015.

**Kaeley GS** Musculoskeletal Interventional Procedures for the Rheumatologist. Canadian Rheumatology Ultrasound Course, King Saud College of Medicine, Riyadh, Saudi Arabia. Jan 2015.

**Kaeley GS** Invited Faculty for hands on instruction in workshops. Canadian Rheumatology Ultrasound Course, King Saud College of Medicine, Riyadh, Saudi Arabia. Jan 2015.

**Kaeley GS** Musculoskeletal Ultrasound Test Examiner. Canadian Rheumatology Ultrasound Course, King Saud College of Medicine, Riyadh, Saudi Arabia. Jan 2015.

**Kaeley GS** Role of Ultrasound in Diagnosis and Management of Rheumatic and Musculoskeletal Disorders for Rheumatologists. Musculoskeletal Ultrasound Course and Interventional Cadaver Workshop for Rheumatologists, Jacksonville, FL. Jan 2015.

**Kaeley GS** Sonography of the Shoulder: Rheumatologists Perspective. Musculoskeletal Ultrasound Course and Interventional Cadaver Workshop for Rheumatologists, Jacksonville, FL. Jan 2015.

**Kaeley GS** Ultrasonography of Inflammatory Arthritis. Musculoskeletal Ultrasound Course and Interventional Cadaver Workshop for Rheumatologists, Jacksonville, FL. Jan 2015.

**Kaeley GS** Ultrasonography of Crystalline Arthritis. Musculoskeletal Ultrasound Course and Interventional Cadaver Workshop for Rheumatologists, Jacksonville, FL. Jan 2015

**Kaeley GS** Faculty for hands on instruction in workshops and cadaveric injection guidance sessions - Musculoskeletal Ultrasound Course and Interventional Cadaver Workshop for Rheumatologists, Jacksonville, FL. Jan 2015.

**Kaeley GS** Practical Use of Sonography by the Rheumatologist. Indian Rheumatology Association Annual Congress, Chandigarh, India. November 2014.

**Kaeley GS** Introduction to Musculoskeletal Ultrasound Indian Rheumatology Association Annual Congress, Chandigarh, India. November 2014.

**Kaeley GS** Sonography of the Hand and Wrist. Indian Rheumatology Association Annual Congress, Chandigarh, India. November 2014.

**Kaeley GS** Sonography of the Shoulder. Indian Rheumatology Association Annual Congress, Chandigarh, India. November 2014.

**Kaeley GS** Course director and Instructor. Indian Rheumatology Association Annual Congress, Chandigarh, India. November 2014.

**Kaeley GS** Sonography of the Shoulder. American College of Rheumatology Musculoskeletal Ultrasound Course for Rheumatologists, Boston, MA. Nov 2014. Live Demonstration: Scanning of the Shoulder

**Kaeley GS** Live Demonstration: Scanning of the Shoulder American College of Rheumatology Musculoskeletal Ultrasound Course for Rheumatologists, Boston, MA. Nov 2014

**Kaeley GS** Invited faculty for hands on instruction - American College of Rheumatology Musculoskeletal Ultrasound Course for Rheumatologists, Boston, MA. Nov 2014.

**Kaeley GS** Faculty and Instructor American College of Rheumatology Ultrasound Guidance Course Utilizing Hand Injection Models. Boston, MA. Nov 2014.

**Kaeley GS** Faculty and Instructor Musculoskeletal Ultrasound Workshop at American College of Rheumatology Ultrasound Course, Boston, MA. Nov 2014.

**Kaeley GS** Musculoskeletal Ultrasound – a Brave New World. Lecture and workshop. Society for Vascular Ultrasound Annual Meeting. Orlando, Florida. Aug 2014.

**Kaeley GS** Sonography of the Foot and Ankle: Anatomy and Pathology. Clinical Applications of Musculoskeletal Ultrasound Conference, Ohio State University, Columbus, Ohio. August 2014.

**Kaeley GS** Ultrasound of the knee – Rheumatologists Perspective. Florida Society of Rheumatology Lower Extremity Ultrasound Course. Orlando, FL. July 2014.

**Kaeley GS** Sonography of the Ankle and Foot – Rheumatologists Perspective. Florida Society of Rheumatology Lower Extremity Ultrasound Course. Orlando, FL. July 2014.

**Kaeley GS** Billing and Documentation for Musculoskeletal Ultrasound. Florida Society of Rheumatology Lower Extremity Ultrasound Course. Orlando, FL. July 2014.

**Kaeley GS** Program Director and Faculty for Hands on Instruction - Florida Society of Rheumatology Lower Extremity Ultrasound Course. Orlando, FL. July 2014.

### CLINICAL ACTIVITIES

	AY 14/15
<b>Inpatient activity</b>	
Initial Inpatient Encounters	98
<b>Outpatient activity</b>	
Clinical Visits	3908
US, extremity, nonvascular	414
US Guidance for Needle Placement	39

### CONTRACTS AND GRANTS

Principal Investigator	Study Title	Project Period	Sponsor	Award Amount
Kaeley, G.	M13-550: A Randomized, Double-Blind, Placebo-Controlled, Phase 2 Study to Investigate the Safety and Efficacy of ABT-494 Given with Methotrexate (MTX) in Subjects with Moderately to Severely Active Rheumatoid Arthritis (RA) Who Have Had an Inadequate Response or Intolerance to Anti-TNF Biologic Therapy	6/19/2014 – Present	Abbvie	\$387,022.40
Kaeley, G. Dodani, S. Co-PI	Association of Coronary Artery Calcium Scores (CACs) and Carotid Intima Media Thickness (CIMT) with HDL function: South Asian Immigrants HDL Study (SAIHDLs). Objective: To assess the prevalence of Dysfunctional HDL and Metabolic syndrome in high risk South Asians without coronary artery disease. To determine association of dysfunctional HDL with CIMT and CACs.	01/22/2015	UF COM, Jacksonville	Dean's Grant

Kaeley, G.	Unrestricted equipment loan from Biosound Esaote. Objectives are to; (a) Review the feasibility of 3D and 4D Musculoskeletal Ultrasound; (b) Review the utilization of very high frequency linear ultrasound probes to examine finger entheses; and (c) Examine the reliability and feasibility of radiofrequency acquisition of carotid intima thickening and carotid stiffness in rheumatic patients. Mentor: Sunita Dodani MD, MSc, PhD	2009 – Present	Biosound Esaote	N/A
Kaeley, G.	Musculoskeletal Ultrasound in Predicting Early Dose Titration with Tocilizumab. Collaborative investigator initiated study with University of California, Los Angeles. Objective: To determine if ultrasound Power Doppler synovitis scores at 4 weeks can provide early evidence to predict changes in disease activity at 12 weeks follow up in RA patients treated with 4mg/kg of TCZ.	09/04/2014-Present	UCLA	\$347,255.00
Kaeley, G.	M13-375: A Multicenter, Randomized, Double-Blind, Study Comparing the Efficacy and Safety of Continuing Versus Withdrawing Adalimumab Therapy in Maintaining Remission in Subjects with Non-Radiographic Axial Spondyloarthritis	01/24/2014-Present	Abbvie	\$540,717.50
Kaeley, G.	The CORRONA data collection program and CERTAIN study	4/5/2012-2015	Consortium of Rheumatology Research	\$8,175.00
Kaeley, G.	A Randomized, Double-Blind, Placebo-Controlled Study to Evaluate the Efficacy and Safety of Etanercept in Subjects With Moderately Active Rheumatoid Arthritis despite DMARD Therapy.	7/7/2011-7/7/2014	Amgen, Inc.	\$38,093.70
Kaeley, G. Ramrattan, L. (Fellow) Co-PI	Significance of Extensor Tendon Abnormalities in Rheumatoid Arthritis using Ultrasound. (Fellow Project)	2014- Present	UF COM, Jacksonville	Dean's Grant
Kaeley, G.	A3921133: Phase 3B/4 Randomized Safety Endpoint Study Of 2 Doses Of Tofacitinib In Comparison To A Tumor Necrosis Factor (TNF) Inhibitor In Subjects With Rheumatoid Arthritis	7/5/2014- Present	Pfizer	\$172,900.62
Kaeley, G.	FKB327-002: A Randomised, Blinded, Active-Controlled Study to Compare FKB327 Efficacy and Safety with the Comparator Humira® in Rheumatoid Arthritis Patients Inadequately Controlled on Methotrexate (ARABESC)	02/19/2015-Present	Fujifilm Kyowa Kirin Biologics Co., Ltd.	\$119,367.18
Kaeley, G. Thway, M. Co-PI	M13-538: Phase 2 Study, Multicenter, Open-Label Extension (OLE) Study in Rheumatoid Arthritis Subjects Who Have Completed a Preceding Phase 2 Randomized Controlled Trial (RCT) with ABT-494	10/22/2014-Present	Abbvie	\$676,642.56
Kaeley, G. Thway, M. Co-PI	FKB327-002: A Randomised, Blinded, Active-Controlled Study to Compare FKB327 Efficacy and Safety with the Comparator Humira® in Rheumatoid Arthritis Patients Inadequately Controlled on Methotrexate (ARABESC)	02/19/2015-Present	Fujifilm Kyowa Kirin Biologics Co., Ltd.	\$14,885.70
Kaeley, G. Thway, M. Co-PI	A3921133: Phase 3B/4 Randomized Safety Endpoint Study Of 2 Doses Of Tofacitinib In Comparison To A Tumor Necrosis Factor (TNF) Inhibitor In Subjects With Rheumatoid Arthritis	7/5/2014- Present	Pfizer	\$8,724.73
Kaeley, G.	Defining Sonographic Elements of Dactylitis	06/20/13 – Present	UF COM, Jacksonville	Unfunded
Kaeley, G. Dodani, S. Co-PI	Rheumatology Medicare Provider Payments	05/26/15- Present	UF COM, Jacksonville	Unfunded
Kaeley, G. Thway, M. Co-PI Dodani, S. Co-PI	Utilization of Office Administered Drugs Amongst Medicare Beneficiaries	06/04/2015-Present	UF COM, Jacksonville	Unfunded
Kaeley, G. Thway, M. Co-PI	ML28542 Musculoskeletal Ultrasound in Predicting Early Dose Titration with Tocilizumab	09/04/2014-Present	UCLA	\$347,255.00



Notes

Notes





**DEPARTMENT OF MEDICINE  
ANNUAL FACULTY MEETING  
JUNE 2015**