

DEPARTMENT OF MEDICINE
ANNUAL REPORT
Academic Year 2008-2009

UF UNIVERSITY of
FLORIDA
College of Medicine
Jacksonville

TABLE OF CONTENTS
ACADEMIC YEAR 2009 (7/08 – 6/09)

- I. Statement from the Chairman**
- II. Department Organizational Overview**
 - a. Administration
 - b. Division Chiefs
 - c. Residents/Fellows
- III. Graduate Medical Education**
 - a. Internal Medicine Residency Training Program
 - b. Subspecialty Fellowship Program
 - c. Student Education Programs
- IV. Department Research**
- V. Individual Divisions**
 - a. Cardiology
 - b. Endocrinology
 - c. Gastroenterology
 - d. General Internal Medicine
 - e. Hematology & Medical Oncology
 - f. Infectious Disease
 - g. Nephrology and Hypertension
 - h. Pulmonary, Critical Care & Sleep Medicine
 - i. Rheumatology

Department of Medicine
University of Florida
College of Medicine – Jacksonville
653-1 West 8th Street, L20
Jacksonville FL 32209
904-244-8846
www.hscj.ufl.edu/im/

**STATEMENT FROM THE CHAIRMAN
ACADEMIC YEAR 2009 (7/08 - 6/09)**

Dear Colleagues and Friends:

I am happy to share with you the Annual Report of the Department of Medicine at the University of Florida College of Medicine - Jacksonville for the academic year July 2008 through June 2009. I will briefly describe the departmental accomplishments for the past year.

Patient care: The Department expanded clinical activities and achieved 106% of the budgeted revenues. The faculty members continued to excel in clinical productivity exceeding the 75% percentile of MGMA RVU benchmarks. The Department was successful in attracting talented faculty in all of its divisions. The steady increase in the number of admissions to the Medicine service reached 14,277 admissions during the FY09. Continued improvements in clinical operations helped cost containment and enhanced efficiency and our outpatient care experienced growth and improvement in patient satisfaction scores.

Education: Faculty members of the Department continue to excel in their mission of educating students and residents. There were 8 faculty members in the Department who received the Exemplary Teacher Award. The scholarly productivity of the house staff increased substantially and the top prizes of the Annual Research Day were awarded to the residents and fellows within the Department. The Residency Review Committee (RRC) site visit resulted in 6 year full accreditation of the core program and the subspecialty fellowships that were reviewed. Continuing Medical Education (CME) initiatives were offered by all the Divisions within the Department.

New Fellowship programs were initiated as follows: Nephrology Fellowship started on July 1, 2007, while Endocrinology, Pulmonary and Critical Care and Cardiac Electrophysiology Fellowships started July 1, 2008.

Research: The Department once again had an exceptionally productive year in research. There were a total of 78 peer reviewed publications and 19 book chapters and editorials authored by faculty members. Faculty made 49 national and regional presentations. During fiscal year 2009, 61 research awards with a direct cost of \$1,723,391 were acquired. This represents a 129.5% change compared to the previous fiscal year.

Over the last three years, the Department has grown significantly and the faculty members have excelled in every aspect of the academic mission. I am proud to have the privilege of being the Chairman of such an exceptionally productive Department.

Sincerely,

Arshag D. Mooradian, M.D.
Professor and Chairman

**DEPARTMENT ORGANIZATIONAL OVERVIEW
ACADEMIC YEAR 2009 (7/08 - 6/09)**

Arshag D. Mooradian, M.D.

Chairman, Department of Medicine

N. Stanley Nahman, M.D.

Program Director, Internal Medicine Residency and Associate Chair, Department of Medicine

Linda R. Edwards, M.D.

Associate Chair, Department of Medicine

Senthil Meenrajan, M.D.

Associate Program Director, Graduate Medical Education

Jeffrey House, D.O.

Associate Program Director, Graduate Medical Education

Carlos Palacio, M.D.

Director, Medical Student Clerkship

Irene Alexandraki, M.D.

Associate Director, Medical Student Clerkship

Christina Catalano, M.B.A.

Administrator

Nanci Morton

Administrative Manager

DIVISION CHIEFS

Cardiology

Theodore Bass, M.D.

Endocrinology, Diabetes & Metabolism

Kent R. Wehmeier, M.D.

Gastroenterology

Louis Lambiase, M.D., M.H.A.

General Internal Medicine

Linda R. Edwards, M.D.

Hematology & Medical Oncology

Fauzia Rana, M.D.

Infectious Disease

Michael Sands, M.D., M.P.H. & T.M.

Nephrology and Hypertension

N. Stanley Nahman, Jr., M.D.

Pulmonary, Critical Care & Sleep Medicine

J. Davis Cury, M.D.

Rheumatology & Clinical Immunology

Ghaith Mitri, M.D., M.M.M.

RESIDENTS/FELLOWS**Chief Residents 2008-2009**

Rosalyn Alcalde, M.D.
Shilpa Reddy, D.O.

Ross University School of Medicine
Nova Southeastern University

Class of 2008-2009**Housestaff I**

Ainel Boonprakong, M.D.
Rajarshi Chakravarty, M.D.
Justin Federico, D.O.
Jawahar Gazzala, M.D.
Ankur Girdhar, M.D.
Sanjay Hegde, M.D.
Mohammad Izhar, M.D.
Syed Jafri, M.D.
Toufic Kabbani, M.D.
Jamie Kitzman, M.D.
Sudha Koduru, M.D.
Pablo Medina, M.D.
Amr Mohsen, M.D.
Hasan Riaz, M.D.
Muhammad Salahuddin, M.D.
Shawn Tai, M.D.
Jamie Woodcock, M.D.
Louise Zhou, M.D.

Medical School

University of Miami School of Medicine
St. George's University School of Medicine
Lake Erie College of Osteopathic Medicine
Sri Ramachandra University
All-India Institute of Medical Sciences
University of South Florida College of Medicine
Khyber Medical College
Sindh Medical College, University of Karachi
American University of Beirut
University of Florida College of Medicine
St. George's University School of Medicine
University of Florida College of Medicine
University of Alexandria Faculty of Medicine
Nishtar Medical College, Bahauddin Zakariya University
Ross University School of Medicine
Ross University School of Medicine
University of Florida College of Medicine
Ross University School of Medicine

Housestaff II

Sara Ahmed, M.D.
Santosh Kale, M.D.
Ravindra Maharaj, M.D.
Jasdeep Matharu, M.D.
Taren Ohman, M.D.
John-Paul Pham, M.D.
Tauseef Qureshi, M.D.
Prafull Raheja, M.D.
Karishma Ramsubeik, M.D.
Naveen Seecheran, M.D.
Atman Shah, M.D.
Ho Vu, M.D.
Edward Yazigi, M.D.

Medical School

St. Matthews University School of Medicine
BJ Medical College University of Pune
University of West Indies Trinidad
St. George's University School of Medicine
St. George's University School of Medicine
Marshall University School of Medicine
St. George's University School of Medicine
Kasturba Medical College Mangalore University
University of West Indies Trinidad
University of West Indies Trinidad
Ross University School of Medicine
Ross University School of Medicine
Ross University School of Medicine

Housestaff III

Melvin Bullock, M.D.
Andrew Darlington, D.O.
Friba Faqeer, M.D.
Somajita Ghosal, M.D.
Mohammad Asif Khan, M.D.
Carol Le, M.D.
Nimish Naik, M.D.
Thomas Nguyen, M.D.
Vinny Samuel, M.D.
Vandana Seeram, M.D.
Siva Suryadevara, M.D.
Esther Vildor-Dazil, M.D.

Medical School

Medical College of Georgia
Philadelphia College of Osteopathic Medicine
Ross University School of Medicine
Calcutta National Medical College
Khyber Medical College
Medical College of Wisconsin
New York Medical College
Drexel University College of Medicine
Ross University School of Medicine
University of West Indies Trinidad
University of West Indies Trinidad
Florida State University College of Medicine

Subspecialty Fellowship Program Directors

Cardiology
Endocrinology
Gastroenterology
Interventional Cardiology
Infectious Disease
Medical Oncology
Nephrology
Pulmonary Critical Care

Steven Lavine, M.D.
Kent Wehmeier, M.D.
Louis Lambiase, M.D.
Ted Bass, M.D.
Michael Sands, M.D.
Janet Hosenpud, M.D.
Charles Heilig, M.D.
J. Davis Cury, M.D.

Subspecialty Fellow – Housestaff IV

Abdul Alamir, M.D. (Endocrinology)
Bharat Gummadi, M.D. (Cardiology)
Sayer Gunn, M.D. (Medical Oncology)
Lavanya Kodali, M.D. (Nephrology)
Naeem Latif, M.D. (Medical Oncology)
Victor Lopez de Mendoza, M.D. (Nephrology)
Ajay Mhatre, M.D. (Cardiology)
Timmy Nguyen, M.D. (Medical Oncology)
Rachana Palnitkar, M.D. (Infectious Disease)
Saeed Payvar, M.D. (Cardiology)
J. Danny Pulido, M.D. (Pulmonary Critical Care)
William Salyers, M.D. (Gastroenterology)
Moiz Shafiq, M.D. (Cardiology)
Senan Sultan, M.D. (Endocrinology)
Ansley Tharpe, M.D. (Gastroenterology)
Faisal Usman, M.D. (Pulmonary Critical Care)

Subspecialty Fellow – Housestaff V

Aamir Amin, M.D. (Cardiology)
Wayne Cheng, M.D. (Cardiology)
Noel Dasgupta, M.D. (Cardiology)
Taylor Dowsley, M.D. (Cardiology)
Supriya Mannepalli, M.D. (Infectious Disease)
Aasita Patel, M.D. (Cardiology)
Ivan Rascon-Aguilar, M.D. (Gastroenterology)
Haritha Sakhamuri, M.D. (Nephrology)
Amit Shah, M.D. (Cardiology)
Aja Smith-McCutchen, M.D. (Gastroenterology)
Robert Sullivan, M.D. (Nephrology)
Thomas Walsh, M.D. (Cardiology)
Robert Zaiden, M.D. (Medical Oncology)

Subspecialty Fellow – Housestaff VI

M. Kamran Aslam, M.D. (Cardiology)
Matthew Cole, M.D. (Gastroenterology)
Lori McMullan, M.D. (Cardiology)
A. Tony Ortiz, M.D. (Cardiology)

Medical School

Damascus University Faculty of Medicine
St. George's University School of Medicine
Pennsylvania State University College of Medicine
Dr. NTR University of Health Sciences
Ayub Medical College University of Peshawar
Universidad Central Del Este
Florida State University College Of Medicine
Flinders University of South Australia
Topiwala National Medical College University of Mumbai
Iran University of Medical Sciences
Universidad de Ciencias Medicas
University of Kansas School of Medicine
University of Texas Southwestern Medical School
Damascus University Faculty of Medicine
Medical College of Georgia
Allama Iqbal Medical College University of Punjab

Medical School

Texas A & M University College of Medicine
University of Florida College of Medicine
University of Wisconsin Medical School
Finch University of Health Science Chicago Medical School
Kasturba Medical College Mangalore University
University of Illinois College of Medicine
Universidad de San Carlos
PSG Institute of Medical Sciences
University of Alabama School of Medicine
Case Western Reserve University School of Medicine
Ross University School of Medicine
University of Miami School of Medicine
St. Matthews University School of Medicine

Medical School

University of Texas Southwestern Medical School
Ross University School of Medicine
Louisiana State University School of Medicine
Universidad Central del Este

GRADUATE MEDICAL EDUCATION
ACADEMIC YEAR 2009 (7/08 - 6/09)

Highlights

The Graduate Medical Education Program had another successful academic year highlighted by the ACGME decision to award a 6 year accreditation cycle for the core training program and four fellowships. In addition, progress continues in the matching of high quality of intern recruits, strong performances on the ABIM certifying examination, successes with graduates matching into competitive fellowships, and continued stabilization of new fellowship training programs. Each facet of the program is discussed in the following.

Internal Medicine Residency Program: The core program was site visited by the ACGME in January 2009 and received the highest possible assessment with 6 years of full accreditation. This exciting outcome will serve as a catalyst for our continued efforts to develop a competitive and premier training program. The program continues to be led by Dr. N. Stanley Nahman, Jr., M.D. and in the last year, Drs. Senthil Meenrajan and Jeff House joined as Associate Program Directors. They replaced Drs. Arpitha Ketty and Olga Petrucelli who left the institution for other professional opportunities. The 2009 Match was a success with the mean 2-digit step one score for the matched group of 93. In addition, and for the second year in a row, our pass rate on the ABIM certifying examination exceed 90%. Finally, 100% of residents seeking positions successfully matched in the fellowship of their choice. 20% percent of the fellowships were outside of the UF system. The program was well served by the two Chief Medical Residents (CMR), Dr. Shilpa Reddy and Dr. Rosie Alcalde. Both physicians will move on to pursue fellowship training in gastroenterology (Dr. Reddy, University of Louisville) and endocrinology (Dr. Alcalde, UF Jacksonville). Drs. Nahman, House and Meenrajan were recognized as exemplary teachers by the University of Florida. In research, residents submitted abstracts to the Florida ACP, American Society of Nephrology, and Southern Section of the AFMR. Resident research accounted for 5 internal research grants, 4 published manuscripts, 8 published abstracts and 20 poster presentations.

Subspecialty Fellowship Program: Two new fellowships (Pulmonary/Critical Care and Electrophysiology) enrolled their first fellows in July 2008, bringing the total number of postgraduate fellowships to 9 (Cardiology, Electrophysiology, Endocrinology, Interventional Cardiology, Gastroenterology, Infectious Disease, Medical Oncology, Nephrology and Pulmonary/Critical Care). Cardiology, Interventional Cardiology, Infectious Disease and Medical Oncology were site visited by the ACGME in January 2009, and all received a 6 year accreditation cycle, the strongest possible outcome from a site visit, and a further endorsement of the high quality training opportunities available on the UFCOM Jacksonville campus.

Student Education: Drs. Alexandraki and Palacio continue to head student education and have been recognized for their efforts. Students continue to have rotations in inpatient and ambulatory settings. They also complete a two week required Geriatrics Clerkship during the 4th year.

LISTING OF PROGRAM LEADERSHIP

Chief Medical Residents

Shilpa Reddy, DO, Post-doctoral Associate and Chief Medical Resident

Medical School / Graduation date	Nova Southeastern University	2005
Internship/residency and year	University of Florida Jacksonville	2008
Chief Medical Resident	University of Florida Jacksonville	

Rosalyn Alcalde, MD, Post-doctoral Associate and Chief Medical Resident

Medical School / Graduation date	Ross University School of Medicine	2005
Internship/residency and year	University of Florida Jacksonville	2008
Chief Medical Resident	University of Florida Jacksonville	

Current Faculty

Irene Alexandraki, MD, Assistant Professor and Associate Student Clerkship Director

Medical School / Graduation date	University of Athens	1989
Internship/residency and year	Hahneman University	1998
Subspecialty training and year	Infectious disease/Baylor College of Medicine	2001

Jeff House, DO, Assistant Professor and Associate Program Director

Medical School / Graduation date	Nova Southeastern University	1997
Internship/residency and year	University of Florida Jacksonville	2001

N. Stanley Nahman, Jr., MD, Professor and Program Director

Medical School / Graduation date	Medical College of Ohio	1979
Internship/residency and year	Presbyterian Hospital Denver, Mt Carmel Health, Columbus	1984
Subspecialty training and year	Nephrology/The Ohio State University	1987

Carlos Palacio, MD, Associate Professor and Student Clerkship Director

Medical School / Graduation date	University of Miami	1993
Internship/residency and year	University of Florida Jacksonville	1996

Senthil Meenrajan, MD, Assistant Professor and Associate Program Director

Medical School / Graduation date	Madras Medical College	1997
Internship/residency and year	Robert Packer Hospital	2004
Subspecialty training and year	Geriatrics/Oregon Health and Science University	2005

PUBLICATIONS

Sullivan R*, Reddy S*, Elfayoumy S, Wludyka P, Britt K, Maddirala S, Cuhaci B, Mars R, Cu G, Urquidi V, Lambiase L, Nahman Jr NS: Hepatitis C and Cirrhosis as Risk Factors for Bacteremia in Hemodialysis Patients. *J Invest Med*, 56:452, 2008.

Maddirala S, Elfayoumy S, Wludyka P, Bullock K, Britt K, Reddy S*, Cuhaci B, Mars R, Cu G, Urquidi V, Lambiase L, Nahman Jr NS. Bacteremia in Patients with HIV and Hepatitis C: Analysis of the DMMS Study. *J Invest Med*, 56:421, 2008.

Darlington A*, Suzuski Y, Desai B, Rozum L, Bass T, Nahman Jr NS, Angiolillo D. Analysis of Thrombotic Profiles in Patients with End Stage Renal Disease Undergoing Hemodialysis. *J Invest Med*, 56:415, 2008.

Gupta R*, Kattoor R, Vega KJ, Petrucelli O, Nahman Jr NS. Overuse of Acid Suppression Therapy in Hospitalized Patients and Interventions Designed to Improve Prescribing Habits. *J Invest Med*, 56:436, 2008.

Mohsen, A.*, Meenrajan, S. Case Report: A rare Case of Metastatic Hepatocellular Carcinoma. *NE Florida Medicine Vol. 6, No 2. 2009*

Qureshi, T.*, Nguyen, T*. Nahman, N.S., Urquidi, V. In vitro cytotoxicity of Gadolinium Contrast Medium NE Florida Medicine Vol. 6, No 2. 2009

Khan, M.* Shah, A.* House, J. Symptomatic Hypermagnesemia Due to Oral Milk of Magnesia in the Absence of Renal Failure.. *NE Florida Medicine Vol. 6, No 2. 2009*

Reddy, S.* Meenrajan, S. Immunity Factor in Resistant or Recurrent Clostridium Difficile. NE Florida Medicine Vol. 6, No 2. 2009

Darlington, A.* Desai, B. Bass, T. Nahman, N.S., Angiolillo, D. The Analysis of Thrombotic Profiles in Patients with End-stage Renal Disease. NE Florida Medicine Vol. 6, No 2. 2009

* indicates a resident

HONORS AND AWARDS

Justin Federico, DO	Intern of the Year	2009
Andrew Darlington, DO	Resident of the Year	2009
Luis Laos, MD	Teacher of the Year	2009

Exemplary Teachers: (arranged alphabetically)

Drs. Irene Alexandraki, Dominick Angiolillo, Linda Edwards, Malcolm Foster, Jeffrey House, Senthil Meenrajan, N. Stanley Nahman Jr., and Elisa Sottile.

Andrew Darlington was awarded the Exemplary Teacher Award for residents.

Clinical Teacher of the Year & Excellence in Student Education Award:

Andrew Darlington was the recipient of the Edward Jelks for Outstanding Resident Clinician of the Year.

Linda Edwards received the Louis Russo Award for Outstanding Professionalism in Medicine.

Nimish Naik was honored as the ACP Resident of the Year in 2009.

ENDOWMENTS AND GIFTS

The Anne and Max Michael, Jr. Education Fund Established 2006, by Anne Michael

GRANTS AND CONTRACTS

Principal Investigator	Sponsor/Title
Thomas Nguyen	University of Florida Dean's Fund for Residents and Fellow Research Grant, 2008: "A Retrospective Analysis of Risk Factors in DSRD."
Siva Suryadevara	University of Florida Dean's Fund for Residents and Fellow Research Grant, 2009: "The effects of Pioglitazone on platelet function in patients with Type 2 diabetes mellitus & coronary artery disease."
Amr Mohsen	University of Florida Dean's Fund for Residents and Fellow Research Grant, 2009: "Impact & Costs of Emergency Department Care of Nursing Home Patients."

POST-GRADUATE ACTIVITIES OF CMR AND SENIOR RESIDENTS

<u>Graduate</u>	<u>Professional status</u>	<u>Location</u>
<u>Outgoing Chiefs</u>		
Shilpa Reddy, DO	Fellowship, Gastroenterology 2009	University of Louisville
Rosalyn Alcalde, MD	Fellowship, Endocrinology 2009	University of Florida, Jacksonville
<u>Graduating residents</u>		
1. Andrew Darlington, DO	Chief Medical Resident, Fellowship, Cardiology 2010	University of Florida, Jacksonville University of Florida, Jacksonville
2. Nimish Naik, MD	Chief Medical Resident Fellowship, Nephrology 2010	University of Florida, Jacksonville University of Pittsburgh
3. Friba Faqeer, MD	Private Practice	Jacksonville, FL
4. Somajita Ghosal, MD	Private Practice	Baltimore, MD
5. Melvin Bullock, MD	Hospitalist Fellowship, Gastroenterology, 2010	University of Florida, Jacksonville University of Florida, Jacksonville
6. Carol Le, MD	Private Practice	Jacksonville, Florida
7. Mohammad Asif Khan, MD	Fellowship, Oncology 2009	University of Florida, Jacksonville
8. Thomas Nguyen, MD	Fellowship, Nephrology 2009	University of Florida, Jacksonville
9. Vinny Samuel, MD	Fellowship, Pulmonary/Critical Care 2009	University of Florida, Jacksonville
10. Vandana Seeram, MD	Fellowship, Pulmonary/Critical Care 2009	University of Florida, Jacksonville
11. Siva Suryadevara, MD	Fellowship, Cardiology 2009	University of Florida, Jacksonville
12. Esther Vildor-Dazil, MD	Private Practice	Jacksonville, FL



July 15, 2009

**Accreditation Council for
Graduate Medical Education**

515 North State Street
Suite 2000
Chicago, IL 60654

Phone 312.755.5000
Fax 312.755.7498
www.acgme.org

N. S. Nahman Jr.
Program Director Internal Medicine Residency Program
Univ of Florida College of Medicine/Jacksonville
Department of Medicine, LRC 4th floor
653-1 West 8th St, GME Box L18
Jacksonville, FL 32209

Dear Dr. Nahman,

The Residency Review Committee for Internal Medicine, functioning in accordance with the policies and procedures of the Accreditation Council for Graduate Medical Education (ACGME), has reviewed the information submitted regarding the following program:

Internal Medicine

University of Florida College of Medicine Jacksonville Program
University of Florida College of Medicine Jacksonville
Jacksonville, FL

Program 1401121099

Based on all of the information available to it at the time of its recent meeting, the Review Committee accredited the program as follows:

Status: Continued Accreditation
Length of Training: 3
Maximum Number of Residents: 44
Effective Date: 05/19/2009
Approximate Date of Next Survey: 05/2014 FS
Cycle Length: 5.0 Year(s)
Approximate Date For Internal Review: 11/2011

The Review Committee commended the program for its demonstrated substantial compliance with the ACGME's Requirements for Graduate Medical Education without citations.

PROGRAM STRENGTHS

The Review Committee noted the following strengths or areas of substantial improvement since the last review:

1. The program and faculty have implemented measures that have reversed a prior decline in American Board of Internal Medicine pass rate.
2. The sponsoring institution and department have recently implemented several subspecialty training programs and enriched the educational environment.
3. The department and program are commended for providing an educational program that generates significant enthusiasm among the residents.

N. S Nahman
Page 2

It is the policy of the ACGME and of the Review Committee that each time an action is taken regarding a change in the accreditation status of a program, the residents and applicants (those invited for interviews) must be notified. This office must be notified of any major changes in the organization of the program. When corresponding with this office, please identify the program by name and number as indicated above. Changes in participating sites and changes in leadership must be reported to the Review Committee using the ACGME Accreditation Data System.

Sincerely yours,



Karen L Lambert
Associate Executive Director
Residency Review Committee for Internal Medicine
(312)755-5785
kll@acgme.org

CC: Constance K. Haan, MD MS
Steven J. Lavine, MD
Kent R. Wehmeier
Louis R. Lambiase, MD MHA
Michael Sands, MD MPH
Janet R. Hosenpud, MD BA
Charles W. Heilig, MD BS
Theodore A. Bass, MD
Steve S. Hsu, MD
James D. Cury

Participating Site(s):
Shands Jacksonville Medical Center

DEPARTMENT RESEARCH
ACADEMIC YEAR 2009 (7/08 - 6/09)

Clinical and basic science effort has expanded over the past year and has been a major focus of the department. The department has several investigators working in the UF-Jacksonville Medical Research Building, including **Michael J. Haas, Ph.D.** (Endocrinology), **Charles Heilig, M.D.** (Nephrology & Hypertension), **Xiaoyu Li, M.D., Ph.D.** (Gastroenterology), and **Virginia Urquidi, Ph.D.** (Nephrology & Hypertension).

This spring, **Robert C. Nuss, M.D.** (Dean of the Regional Campus – Jacksonville), **Michael Nussbaum, M.D.** (Chair, Department of Surgery) and **N. Stanley Nahman, Jr., M.D.** (Chief, Division of Nephrology & Hypertension), provided funds to purchase a real-time DNA analysis system, located in the Medical Research Building. Since this technology is rapidly becoming the standard for such tasks as measuring gene expression and viral copy number, this equipment dramatically improves the competitiveness of investigators in the department

Research conferences were sponsored by the Department of Medicine on Friday afternoons. Speakers from various departments on campus and from The Mayo Clinic – Jacksonville gave presentations on their research projects, both basic and clinical.

New residents in the Department of Medicine were invited to participate in various research projects mentored by Department of Medicine faculty at their orientation. Lectures on clinical study design, statistics, and basic science were provided to faculty and trainees, including sub-specialty residents.

The Department of Medicine won its share of awards at Research Day. Resident **Tausef Qureshi, M.D.** was awarded second place in the platform presentation category, and resident **M. Kamran Aslam, M.D.** received the fourth place prize. In the poster category, **Senan Sultan, M.D.** (fellow, Endocrinology) received the third place and **Abdul-Razzak Alamir, M.D.** (fellow, Endocrinology) received the 5th place prize.

PUBLICATIONS

Peer reviewed publications (2008-2009)

1. Ferreiro JL, Angiolillo DJ. Antiplatelet therapy: Clopidogrel plus PPIs-a dangerous combination? *Nat Rev Cardiol.* 2009 Jun;6(6):392-4.
2. Suzuki N, Angiolillo DJ, Tannenbaum MA, Driesman MH, Smith C, Bikkina M, Meckel CR, Morales CE, Xenopoulos NP, Coletta JE, Bezerra HG, Bass TA, Costa MA. Strategies for drug-eluting stent treatment of bifurcation coronary artery disease in the United States: insights from the e-Cypher S.T.L.L.R.trial. *Catheter Cardiovasc Interv.* 2009 Jun 1;73(7):890-7.
3. Cola C, Brugaletta S, Yuste VM, Campos B, Angiolillo DJ, Sabaté M. Diabetes mellitus: a prothrombotic state implications for outcomes after coronary revascularization. *Vasc Health Risk Manag.* 2009;5(1):101-19.
4. Michelson AD, Frelinger AL 3rd, Braunwald E, Downey WE, Angiolillo DJ, Xenopoulos NP, Jakubowski JA, Li Y, Murphy SA, Qin J, McCabe CH, Antman EM, Wiviott SD; for the TRITON-TIMI 38 Investigators. Pharmacodynamic assessment of platelet inhibition by prasugrel vs. clopidogrel in the TRITON-TIMI 38 trial. *Eur Heart J.* 2009 May 12. [Epub ahead of print].
5. Capranzano P, Ferreiro JL, Angiolillo DJ. Prasugrel in acute coronary syndrome patients undergoing percutaneous coronary intervention. *Expert Rev Cardiovasc Ther.* 2009 Apr; 7(4):361-9.
6. Price MJ, Berger PB, Angiolillo DJ, Teirstein PS, Tanguay JF, Kandzari DE, Cannon CP, Topol EJ. Evaluation of individualized clopidogrel therapy after drug-eluting stent implantation in patients with high residual platelet reactivity: design and rationale of the GRAVITAS trial. *Am Heart J.* 2009 May;157(5):818-24, 824.e1.
7. Angiolillo DJ. Antiplatelet therapy in diabetes: efficacy and limitations of current treatment strategies and future directions. *Diabetes Care.* 2009 Apr; 32(4):531-40.
8. Capodanno D, Angiolillo DJ. Contemporary issues on clopidogrel therapy: a critical appraisal. *Intern Emerg Med.* 2009 Jun;4(3):195-8.

9. Angiolillo DJ. Platelet function testing in clinical practice: are we ready for prime time? *Rev Esp Cardiol.* 2009 Feb;62(2):113-6.
10. Tamburino C, Angiolillo DJ, Capranzano P, Di Salvo M, Ussia G, La Manna A, Guzman LA, Galassi AR, Bass TA. Long-term clinical outcomes after drug-eluting stent implantation in unprotected left main coronary artery disease. *Catheter Cardiovasc Interv.* 2009 Feb 15;73(3):291-8.
11. Angiolillo DJ, Bhatt DL, Gurbel PA, Jennings LK. Advances in antiplatelet therapy: agents in clinical development. *Am J Cardiol.* 2009 Feb 2; 103(3 Suppl):40A-51A.
12. Angiolillo DJ. Variability in responsiveness to oral antiplatelet therapy. *Am J Cardiol.* 2009 Feb 2; 103(3 Suppl):27A-34A.
13. Angiolillo DJ. Emerging insights on antiplatelet therapy. Introduction. *Am J Cardiol.* 2009 Feb 2; 103(3 Suppl):1A-3A.
14. Biasucci LM, Liuzzo G, Della Bona R, Leo M, Biasillo G, Angiolillo DJ, Abbate A, Rizzello V, Niccoli G, Giubilato S, Crea F. Different apparent prognostic value of hsCRP in type 2 diabetic and nondiabetic patients with acute coronary syndromes. *Clin Chem.* 2009 Feb; 55(2):365-8.
15. Rossini R, Musumeci G, Lettieri C, Molfese M, Mihalcsik L, Mantovani P, Sirbu V, Bass TA, Della Rovere F, Gavazzi A, Angiolillo DJ. Long-term outcomes in patients undergoing coronary stenting on dual oral antiplatelet treatment requiring oral anticoagulant therapy. *Am J Cardiol.* 2008 Dec 15; 102(12):1618-23.
16. Angiolillo DJ, Suryadevara S, Capranzano P, Zenni MZ, Guzman LA, Bass TA. Antiplatelet drug response variability and the role of platelet function testing: a practical guide for interventional cardiologists. *Catheter Cardiovasc Interv.* 2009 Jan 1; 73(1):1-14.
17. Angiolillo DJ, Capranzano P, Desai B, Shoemaker SB, Charlton R, Zenni MM, Guzman LA, Bass TA. Impact of P2Y₁₂ Inhibitory Effects Induced by Clopidogrel on Platelet Procoagulant Activity in Type 2 Diabetes Mellitus Patients. *Thromb Res.* 2008 Nov 12. [Epub ahead of print]
18. Angiolillo DJ, Suryadevara S, Capranzano P, Bass TA. Prasugrel: a novel platelet ADP P2Y₁₂ receptor antagonist. A review on its mechanism of action and clinical development. *Expert Opin Pharmacother.* 2008 Nov; 9(16):2893-900.
19. Jiménez-Quevedo P, Suzuki N, Corros C, Ferrer C, Angiolillo DJ, Alfonso F, Hernández-Antolín R, Bañuelos C, Escaned J, Fernández C, Costa M, Macaya C, Bass T, Sabatè M. Vessel shrinkage as a sign of atherosclerosis progression in type 2 diabetes: a serial intravascular ultrasound analysis. *Diabetes.* 2009;58(1):209-14.
20. Antonios N, Angiolillo DJ, Silliman S. Hypertriglyceridemia and ischemic stroke. *Eur Neurol.* 2008;60(6):269-78.
21. Tamburino C, Angiolillo DJ, Capranzano P, Dimopoulos K, La Manna A, Barbagallo R, Tagliareni F, Mangiafico S, Guzman LA, Galassi AR, Bass TA. Complete versus incomplete revascularization in patients with multivessel disease undergoing percutaneous coronary intervention with drug-eluting stents. *Catheter Cardiovasc Interv.* 2008;72(4):448-56.
22. Carlson ER, Percy RF, Angiolillo DJ, Conetta DA. Prognostic significance of troponin T elevation in patients without chest pain. *Am J Cardiol.* 2008;102(6):668-71.
23. Wiviott SD, Braunwald E, Angiolillo DJ, Meisel S, Dalby AJ, Verheugt FW, Goodman SG, Corbalan R, Purdy DA, Murphy SA, McCabe CH, Antman EM; TRITON-TIMI 38 Investigators. Greater clinical benefit of more intensive oral antiplatelet therapy with prasugrel in patients with diabetes mellitus in the trial to assess improvement in therapeutic outcomes by optimizing platelet inhibition with prasugrel-Thrombolysis in Myocardial Infarction 38. *Circulation.* 2008;118(16):1626-36.
24. Angiolillo DJ, Guzman LA. Clinical overview of promising nonthienopyridine antiplatelet agents. *Am Heart J.* 2008 Aug;156(2 Suppl):S23-8.
25. Angiolillo DJ, Bates ER, Bass TA. Clinical profile of prasugrel, a novel thienopyridine. *Am Heart J.* 2008 Aug;156(2 Suppl):S16-22.
26. Angiolillo DJ, Capranzano P. Pharmacology of emerging novel platelet inhibitors. *Am Heart J.* 2008 Aug;156(2 Suppl):S10-5.
27. Angiolillo DJ, Guzman LA, Bass TA. Current antiplatelet therapies: benefits and limitations. *Am Heart J.* 2008 Aug;156(2 Suppl):S3-9.
28. Angiolillo DJ, Bates ER. Platelet inhibitor therapy: current perspectives and emerging novel agents: introduction. *Am Heart J.* 2008 Aug;156(2 Suppl):S1-2.
29. Angiolillo DJ, Capranzano P, Goto S, Aslam M, Desai B, Charlton RK, Suzuki Y, Box LC, Shoemaker SB, Zenni MM, Guzman LA, Bass TA. A randomized study assessing the impact of cilostazol on platelet function profiles in patients with diabetes mellitus and coronary artery disease on dual antiplatelet therapy: results of the OPTIMUS-2 study. *Eur Heart J.* 2008 Sep;29(18):2202-11.
30. Valgimigli M, Campo G, de Cesare N, Vranckx P, Hamon M, Angiolillo DJ, Sabatè M, Ferrari F, Furgieri A, Tumscitz C, Repetto A, Colangelo S, Meliga E, Kubbajeh M, Parrinello G, Percoco G, Ferrari R. Tailoring treatment with tirofiban in patients showing resistance to aspirin and/or resistance to clopidogrel (3T/2R). Rationale for the study and protocol design. *Cardiovasc Drugs Ther.* 2008 Aug;22(4):313-20.
31. Giles T, Miller AB, Elkayam, U et al: Pioglitazone use in early heart failure, *J of Card failure* 2008; 14: 445-452.

32. Lavine SJ, Conetta DA. Comparison of the effect of pressure loading on left ventricular size, systolic and diastolic function in canines with left ventricular dysfunction with preserved and reduced ejection fraction. *Cardiovasc Ultrasound*. 2008 Nov 18;6:57.
33. Mooradian AD. Asymptomatic hyperthyroidism in older adults? Is it a distinct clinical and laboratory entity? *Drugs & Aging* 25(5):371-80, 2008.
34. Wehmeier, KR, Mazza, A, Hachem, S, Ken Ligaray K, Mooradian AD, Wong, NC, Haas MJ. Differential regulation of apolipoprotein A-I gene Expression by vitamin D receptor modulators *Biochim. Biophys. Acta* 1780:264-273, 2008.
35. Wehmeier KR. The Thrifty Economy: Energy Storage and the Obesity Epidemic. *Northeast Florida Medicine* 59:10-17, 2008.
36. Wehmeier KR and Wood D. Evaluation and treatment of bone diseases in youth with chronic health conditions. *Northeast Florida Medicine* 59:35-42, 2008.
37. American Diabetes Association, Bantle JP, Wylie-Rosett J, Albright AL, Apovian CM, Clark NG, Franz MJ, Hoogwerf BJ, Lichtenstein AH, Mayer-Davis E, Mooradian AD, Wheeler ML. Nutrition recommendations and interventions for diabetes: a position statement of the American Diabetes Association. *Diabetes Care*. Jan;31 Suppl 1:S61-78, 2008.
38. BARI 2D Study Group (Mooradian A), Frye RL, August P, Brooks MM, Hardison RM, Kelsey SF, MacGregor JM, Orchard TJ, Chaitman BR, Genuth SM, Goldberg SH, Hlatky MA, Jones TL, Molitch ME, Nesto RW, Sako EY, Sobel BE. A randomized trial of therapies for type 2 diabetes and coronary artery disease. *N. Engl J Med*. 360 :2503-15, 2009
39. Kancha R. Perioperative assessment and management of the patient with pulmonary disease. *Northeast Florida Medicine*, Vol 59, No.1 2008: 19-22.
40. Kancha R. Perioperative Assessment and management of patients with Diabetes. *Northeast Florida Medicine*, Vol 59, No. 1 2008: 23-27.
41. Maalouf R, Mosley M, James Kallail K, Kramer KM, Kumar G. A comparison of salicylic acid levels in normal subjects after rectal versus oral dosing. *Acad Emerg Med* 2009 Feb;16(2):157-61.
42. Maalouf R, Mierau SB, Moore TA, Kaul A. First case report of community-acquired pneumonia due to *Tsukamurella pulmonis* *Ann Intern Med*. 2009 Jan 20;150(2):147-8.
43. Pham D. Multidisciplinary Approach to Colorectal Cancer Treatment. *Northeast Florida Medicine* Vol. 60, No1; 9: 2009
44. Zaiden R, Pham D. Chemotherapy for Metastatic Colorectal Cancer. *Northeast Florida Medicine* Vol. 60, No 1: 22-23; 2009
45. Meenrajan S, Subbiah S, Pham D. Consideration in the Management of Colorectal Cancer in the Elderly. *Northeast Florida Medicine* Vo. 60, No1; 24-28; 2009
46. Reddy S, Sullivan R, Zaiden R, De Mendoza V, Naik N, Vega K, Nahman S, Alexandraki I. Hepatitis C infection and the risk of bacteremia in hemodialysis patients with tunneled vascular access catheters. *Southern Medical Journal* Volume 102, Number 4, April 2009
47. Nguyen T, Pham D. Adjuvant Chemotherapy for Colon Cancer: *Northeast Florida Medicine* Vol. 60, No 1; 20 – 21; 3.2009
48. Edwards L; Gauger C, Rana F. Sick Cell Disease: Transition from Pediatric to Adult Providers; *Northeast Florida Medicine* vol. 59, No. 4 December 2008
49. Rana F, Garg P, Buzaianu E, Guthrie T. Predictors of toxicity and toxicity profile of adjuvant chemotherapy in elderly breast cancer patients. *The Breast Journal*. 2009.
50. Palacio C, Rana F. Blast Crisis; *British Medical Journal*: December 2008; online epocrates.com/u29111026
51. Zaiden R, Nguyen T. Large B Cell Lymphoma presenting as recurrent sinusitis. Accepted for publication in *Consultant*
52. Cortas J, Seither K, Maziaz R, Pham D et al. Superiority of rasburicase versus allopurinol on plasma uric acid control in adult patients with hematologic malignancies at risk of developing tumor lysis syndrome: results of a randomized comparative phase iii study; 12:2008
53. Palnitkar RM, Sands M. Mucormycosis; *Epocrates, BMJ* online monograph
54. Bailey, CL *Epocrates, Chancroid. BMJ* online monograph
55. Bailey, CL *Epocrates, Urethritis* *BMJ* online monograph
56. Guzman, N. *Leptospirosis. Epocrates* *BMJ* online monograph
57. Guzman N. *Coxiella* *Epocrates* *BMJ* online monograph
58. Sands M. *Vibrios other than V. cholera* *Epocrates* *BMJ* online monograph
59. Sands M. *Epocrates Hantaviruses in the United States. BMJ* online monograph
60. Bailey, CL, Smith V, Sands M. Hepatitis B Vaccine: a seven-year study of adherence to the immunization guidelines and efficacy in HIV-1 positive adults. *Int J Infect Dis* (2008) 12, e77-83
61. Alexandraki I, Sullivan R, Zaiden R, Bailey C, McCarter Y, et al. Blood culture isolates in hemodialysis vascular catheter-related bacteremia. *Am J Med Sci* 336(4), 2008.

62. The strategies for management of antiretroviral therapy (SMART) study group, including Sands M. Major clinical outcomes in antiretroviral therapy (ART)-naïve participants and in those not receiving ART at baseline in the SMART study. *JID* 2008;197:1133-44.
63. The strategies for management of antiretroviral therapy (SMART) study group, including Sands M. Inferior clinical outcomes of the CD4 cell count-guided antiretroviral treatment interruption strategy in the SMART study: Role of CD4 cell counts and HIV RNA levels during follow-up. *JID* 2008;197:1145-55.
64. Bailey C, Smith V, Sands M. Hepatitis B vaccine: A seven year study of adherence to the immunization guidelines and efficacy in HIV- 1 positive adults. *IJID* 2008; 12:e77 – e83.
65. The SMART/INSIGHT_and D:A:D Study Groups, including Sands M. Use of nucleoside reverse transcriptase inhibitors and risk of myocardial infarction in HIV infected patients. *AIDS* 2008, 22:F17-F24.
66. Fox Z, Phillips A, Cohen C et al and the SMART study group including Sands M. Viral resuppression and detection of drug resistance following interruption of a suppressive non-nucleoside reverse transcriptase inhibitor based regimen. *AIDS* 2008;22:2279-2289.
67. Vindas-Cordero J, Sands M, Sanchez W. Austrian's triad complicated by suppurative pericarditis and cardiac tamponade: A case report and review of the literature. *IJID* 2009;13:e23-e25.
68. Mocroft A, Wyatt C, Szczedh L, et al and the SMART study group including Sands M. Interruption of antiretroviral therapy is associated with increased plasma cystatin C. *AIDS* 2009;23:71-82.
69. Afessa B, Bajwa A, Salman S, Incidence of atrial fibrillation in critically ill patient with sepsis. *J Intensive Care Med* 2008 May-June; 23(3):178-83.
70. Mazidi P, Bajestani S, Khan M, Khair T, Laos L. Goodpasture's Syndrome: A Case Report and Review of Literature: *The Internet Journal of Internal Medicine*. 2008, Volume 7, Number 2.
71. K. Ramsubeik, R. Maharaj, G Mitri. When diagnosis of rheumatologic disease does not "follow the book". *J Musculoskel Med*. January 2009; 26(1): 11-14.
72. Bruyn GA, Naredo E, Moller I, Moragues C, Garrido J, de Bock GH, D'Agostino MA, Filippucci E, Iagnocco A, Backhaus M, Swen N, Balint PV, Pineda C, Milutinovic S, Kane DJ, Kaeley G, Narvaez JA, de Agustin J, Wakefield RJ, Narvaez J, Schmidt WA. Reliability of ultrasonography in detecting shoulder disease in patients with rheumatoid arthritis. *Ann Rheum Dis*. 2009 Mar;68(3):357-61.
73. Goodison S, Urquidi V: Breast tumor metastasis: analysis via proteomic profiling. *Expert Rev Proteomics*. 5:457-67, 2008

Books, Book chapters, Editorials

1. Wehmeier KR. Disorders of Calcium Metabolism. Schmitz P, Martin K and Miller D (eds) In Internal Medicine: Just The Facts McGraw-Hill, New York. 2008.
2. Wehmeier KR. Metabolic Bone Diseases. Schmitz P and Miller D (eds) In Internal Medicine:Just The Facts McGraw-Hill, New York. 2008.
3. Chegade J, Mooradian AD. Drug Therapy: Current and emerging agents in hyperglycemia. In: Diabetes in Old Age. 3rd edition, A.J, Sinclair (eds), John Wiley & Sons Ltd., 2008.
4. Alexandraki I, Contributing author "*Community Acquired Pneumonia*" chapter of the textbook "*Internal Medicine Essentials for Clerkship Students 2*", ACP- Clerkship Directors in Internal Medicine, pages 197-199, 2009
5. Alexandraki I, Contributing author "*Urinary Tract Infection*" chapter of the textbook "*Internal Medicine Essentials for Clerkship Students 2*", ACP- Clerkship Directors in Internal Medicine, pages 180-182, 2009
6. Alexandraki I, Department of Medicine, University of Florida College of Medicine-Jacksonville. HIV-Related Opportunistic Infections (2009) [Internet], eds. BMJ Point of Care. <http://group.bmj.com/products/evidence-centre/bmj-point-of-care-1>
7. Alexandraki I: "*MKSAP for Students 4*", writer of multiple choice questions for the "Urinary Tract Infection" and "Community Acquired Pneumonia" chapters; ACP-Clerkship Directors in Internal Medicine, 2009
8. Alexandraki I, Department of Medicine, University of Florida College of Medicine-Jacksonville (2008). 48-year-old woman with HIV- Ms. Hunt. In SIMPLE: Simulated Internal Medicine Patient Learning Experience [Internet], eds. Berman and Fall, Institute for Innovative Technology In Medical Education, Lebanon, NH. <http://www.simplecases.org>.
9. Palacio, C Contributing author "COPD" chapter of the textbook "Internal Medicine Essentials for Clerkship Students" 2nd edition, ACP- Clerkship Directors in Internal Medicine. October, 2008
10. Palacio, C Contributing author "Hepatitis" chapter of the textbook "Internal Medicine Essentials for Clerkship Students" 2nd edition, ACP- Clerkship Directors in Internal Medicine. October, 2008
11. Palacio, C Multiple Choice Question Writer. CDIM MKSAP 4 for Students. October, 2008
12. Palacio C. Ricketts. BMJ publishing group point-of-care Website. July 2008 (US product on pocrates.com)
13. Palacio C. Ricketts. BMJ publishing group Best Practice Website. January 2009 (International product on bestpractice.com)
14. Carlos Palacio, M.D. (October 2008). 65-year old woman-Mrs Thompson. In SIMPLE: Simulated Internal Medicine Patient Learning Experience Project eds. Berman and Fall. <http://www.simplecases.org>.

15. Palacio C, Fauzia R. Blast Crisis. BMJ publishing group point-of-care Website. January 2009 (US product on epocrates.com)
16. Palacio C, Fauzia R. Blast Crisis. BMJ publishing group Best Practice Website. January 2009 (International product on bestpractice.com)
17. Phillips, James, M.D., Masri, Ghania, M.D. Chapter: Hyponatremia. 2009 Under contract for chapter publication in the British Medical Journal- Point of Care. (Currently under peer review)
18. Masri, Ghania, M.D., Phillips, James, M.D. Chapter: Hyponatremia. 2009 Under contract for chapter publication in the British Medical Journal- Point of Care.
19. Meenrajan S. Elder Abuse. Monograph for BMJ. Point of Care. 2009.

National and regional presentations (2007-2008)

1. Palnitkar RM, Shea YR, Holland SM, Banacloche JG, Palmore TN. Nontuberculous mycobacterial bloodstream infections in NIH patients with primary and acquired immunodeficiencies (1996-2007). Poster at IDSA/ICCA 2008.
2. Mannepalli S, Lauer J. Many faces of Tuberculosis: Tuberculous meningitis in an immunocompromised patient. Poster presentation at Statewide TB and Refugee Health Meeting , Tampa Florida, October 2008.
3. Mannepalli S, Sands M, Guzman N, Khan A. Sleep quality and presence of sleep disordered breathing in an inner city African American HIV seropositive population 50 years and older. American Conference for the Treatment of HIV, Denver, Colorado in May 2009.
4. Mannepalli S, Sands M, Guzman N, McCarter Y. Pulmonary Nocardiosis as the initial presenting infection in HIV/AIDS. Oral presentation at Annual American College of Chest Physicians meeting, Philadelphia, Pa. October 2008.
5. Mannepalli S, Lauer J. Mycobacterium tuberculosis osteomyelitis in a patient with Human immunodeficiency virus/ Acquired Immunodeficiency syndrome (HIV/AIDS) – A Clinical Reminder. Poster presentation at Regional ACP meeting , Tampa, Florida September 2008
6. Wood, D, Lukens-Bull, KM, Yin, X, Edwards, L, Livingood, W, Sawicki G. Factors related to reported to employment, school attendance and other outcomes following transition for a national cohort of young adults with special health care needs 2009 Pediatric Academic Societies Annual Meeting File # 753679
7. Wood, DL, Sawicki, G,, Yin, X, Nathan Demars, N, Edwards, L, Lukens-Bull, K, Livingood, W. Transition support is associated with increased reported self-determination by young adults with special health care needs. 2009 Pediatric Academic Societies Annual Meeting File#754298
8. Reddy,S, Ramsubeik, R, Federico,J, Goodwich, R, Palacio,C, Vega KJ. Do HbA1C levels correlate with delayed gastric emptying in diabetic patients? Poster Session, Digestive Disease Week, McCormick Place in Chicago, IL, June 3, 2009, Abstract # 582494
9. Vega, KJ, Carlos Palacio, C, Mooradian A Validation of a gastroesophageal reflux questionnaire for use in African Americans. Digestive Disease Week, Chicago, IL, June 2, 2009, Abstract # 585119
10. Lavine SJ. Left ventricular filling pressure can be estimated from systolic arterial pressure and left ventricular relaxation time. J Am Sco Echocardiogr 2009; 22; 586 (abstract). Presented at the Scientific Sessions of the American Society Echocardiography, June 2009, Washington, DC.
11. McMullan L, Smalheiser S, Weisberg I, Percy R, Hsu S, Zenni M, Miller AB: Association of ventricular arrhythmia therapy and extent of scarred myocardium measured by single photon emission computed tomography Imaging in ischemic heart failure patients. J of Card Failure 2008; 14; no 6S, pg S58
12. O'Connor C, Anand I, Fuzat M, Plehn J, Gottlieb S, Silver M, Lindenfeld J, Miller AB, et al: Additive effects of b 1 389 Arg/Gly alpha 2 c322-325 wt/del genotype combinations on adjudicated hospitalizations and death in the beta blocker evaluation of survival trial (BEST). J of Card Failure 2008; 14: no 6S, pg S69
13. Wang N, Konstam M, Maggioni A, Traver B, Burnett J, Grinfeld L, Swedberg K, Udelson J, Zannand F, Cook T, Zimmer C, O'Connor C, Miller AB, Gheorgiade M: Correlation of ejection fraction to early post discharge sudden death and all cause mortality in the EVEREST trial. J of Card Failure 2008; 14: no 6S, pg S71
14. Wang N, Konstam M, Maggioni A, Traver B, Burnett J, Grinfeld L, Swedberg K, Udelson J, Zannand F, Cook T, Zimmer C, O'Connor C, Miller AB, Gheorgiade M: Post discharge adjudicated outcomes in patients with implantable defibrillators in the EVEREST trial. J of Card Failure 2008; 14: no 6S, pg S72
15. Smalheiser S, McMillan L, Venkataraman R, Percy R, ChapmanD, Zenni M, Miller AB: Association of heart failure class and left ventricular dyssynchronymeasured by SPECT imaging in ischemic systolic heart failure patients. J of Card Failure 2008; 14: no 6S, pg S90
16. Carson P, Gottlieb S, Anand I, Plehn J, Silver M, Lindenfeld J, O'Connor C, Miller AB et al: Determination of hospitalization type by investigator case report form or adjudication committee in a large heart failure clinical trial (BEST). J of Card Failure 2008; 14: no 6S, pg S 93
17. Miller AB, Reichel N, St. John Sutton M, et al: Comparable blood pressure control and LV mass reduction in patients with hypertension and LVH with ACE inhibitor alone or combined with B blockade 2009; in press J Amer Soc Hypert Presented Late Breaking Trials ASH 2009

18. Jimenez Quevedo P, Sabate M, Corros C, Ferrer M, Alfonso F, Hernandez-Antolin R, Escaned J, Banuelos C, Angiolillo DJ, Macaya C. Insights on the effect of secondary prevention on plaque composition and cardiac events in diabetic patients. European Society of Cardiology 2008. Munich, Germany.
19. Wiviott SD, Antman E, Angiolillo DJ, Meisel , Dalby, Verheugt , Goodman, Murphy, McCabe, Braunwald . Greater effect of intensive antiplatelet therapy with prasugrel compared with clopidogrel in diabetics in TRITON - TIMI 38. European Society of Cardiology 2008. Munich, Germany.
20. Rossini , Musumeci, Lettieri , Molfese, Mantovani Sirbu, Mihalcsik, Spirito, Gavazzi, Angiolillo. Outcomes of long-term triple therapy with aspirin, clopidogrel, and warfarin in patients undergoing coronary stenting. European Society of Cardiology 2008. Munich, Germany.
21. Tamburino, Angiolillo, Capranzano, Di Salvo, Caggaggi, Tomasello, Capodanno, Galassi, Ussia, Bass. Long-term clinical outcomes after drug-eluting stent implantation in unprotected left main coronary artery disease. European Society of Cardiology 2008. Munich, Germany.
22. Angiolillo, Bernardo, Trabetti, Zanoni, Cavallari, Capranzano, Macaya, Pignatti, Fernandez-Ortiz, Bass . Role of MDR-1 gene polymorphisms on clopidogrel responsiveness in patients with coronary artery disease. European Society of Cardiology 2008. Munich, Germany.
23. Frelinger AL , Michelson AD; Braunwald E; Downey WE; Angiolillo DJ; Xenopoulos NP; Jakubowski JA; Li Y; Murphy SA; Qin J; McCabe CH; Antman EM; Wiviott SD, for the TRITON-TIMI 38 Investigators. Pharmacodynamic assessment of platelet inhibition by prasugrel versus clopidogrel in the TRITON-TIMI 38 Trial. American Heart Association 2008. Chicago, IL.
24. Capranzano P, Ferreiro JL, Sumner S, Desai B, Charlton RK, Box L, Zenni MM, Guzman LA, Bass TA, Angiolillo DJ, Evaluation of a modified light transmittance aggregometry protocol to assess P2_{Y12} blockade induced by clopidogrel. American College of Cardiology/i2 Summit 2009. Orlando, FL.
25. Angiolillo DJ, Bernardo E, Capranzano P, Sabate M, Ferreiro JL, Alfonso F, Jimenez-Quevedo P, Hernandez R, Guzman LA, Macaya C, Fernandez-Ortiz A, Bass TA. Platelet Disaggregation: a Novel Parameter of Clopidogrel Responsiveness? American College of Cardiology/i2 Summit 2009. Orlando, FL.
26. Capranzano P, Ferreiro JL, Sumner S, Desai B, Charlton RK, Zenni MM, Guzman LA, Bass TA, Angiolillo DJ. Clopidogrel-induced antiplatelet effect assessment by flow cytometry and point-of-care based assays: correlation between VASP and verify now P2_{Y12} testing. American College of Cardiology/i2 Summit 2009. Orlando, FL.
27. Angiolillo DJ, Bernardo E, Capranzano P, Sabate M, Jimenez-Quevedo P, Ferreiro JL, Alfonso F, Hernandez R, Macaya C, Fernandez-Ortiz A, Bass TA. Prognostic implications of high platelet reactivity as defined by multiple agonists in diabetes mellitus patients on dual antiplatelet therapy. American College of Cardiology/i2 Summit 2009. Orlando, FL.
28. Meenrajan S, Ketty A, Petrucelli O, S Nahman. evaluating the effect of an intense orientation session on resident attitudes toward continuity clinic training. Southern American Federation for Medical Research. Abstract. February 12-14, 2009.
29. Meenrajan S, Ketty A, Petrucelli O, S Nahman. Evaluating and impacting resident attitudes toward continuity clinics. medical education week, University of Florida, College of Medicine Jacksonville. Apr 2009.
30. Mohsen A, Meenrajan S. Case report of a rare case of metastatic hepatocellular carcinoma. Florida ACP. 2009
31. Sottile, E. Improving your clinical teaching: from concepts to action, American College of Physicians Pre-Course 2009, Philadelphia, PA.
32. Munoz, JC, Pudhota ,S Smith AS, Vega K. Modified technique to extract malpositioned or migrated self-expanding stents from the esophagus and stomach. American College of Gastroenterology meeting. 2009.
33. Munoz, JC, Smith AS. Unusual objects removed from unusual patients: a case series and literature review American College of Gastroenterology meeting, 2009.
34. Smith, AS, Munoz, JC, Vega K, Nutritional differences at the time of colorectal cancer diagnosis: a potential explanation for disparities in outcome between African Americans and non-Hispanic Whites. American College of Gastroenterology (ACG) meeting. 2009.
35. Vega KJ, Langford-Legg TL, Jamal MM. Gender variation in lower esophageal sphincter pressure and length. Am J Gastroenterol 2008; 103 (S1): S2. (Poster presentation, ACG 2008).
36. Pudhota S, DiTeodoro LA, Vega KJ, Wludyka P, Bullock D, Lambiase LR. Ultrasound marking improved percutaneous liver biopsy yield. Am J Gastroenterol 2008; 103 (S1):AS144. (Poster presentation, ACG 2008).
37. Smith AS, Cole M, Vega KJ, Munoz JC. Palliation of malignant rectosigmoid obstruction secondary to locally invasive prostate cancer with multiple overlapping self-expanding metal stents. Am J Gastroenterol 2008; 103 (S1): S348-9. (Poster presentation, ACG 2008).
38. Vega KJ, Palacio C, Jamal MM. Validation of a gastroesophageal reflux questionnaire for use in African Americans. Accepted for presentation, DDW 2009.
39. Chisholm S, Khoury JE, Jamal MM, Vega KJ. The frequency of confirmed Barrett's esophagus varies by ethnicity and gender. Accepted for presentation, DDW 2009.
40. Reddy S, Ramsubeik K, Federico J, Goodwich R, Palacio C, Vega KJ. Do HbA1C levels correlate with delayed gastric emptying in diabetic patients? Accepted for presentation, DDW 2009.

41. Luyu Yao , Haizhen Zhu , Yiling Xu , Louis R. Lambiase , David R. Nelson , Chen Liu , Xiaoyu Li M1808. Inhibition of Hepatitis C Viral (HCV) Replication By In Vitro Dimerization of IFN Regulatory Factor-3 (IRF3) Accepted poster DDW 2009.
42. Pudhota, S, Bullock, MD, Lambiase, LR, Kottoor R. Retrospective analysis of predicting factors for complications of colonoscopy. Accepted Poster DDW 2009.
43. Zaiden R.; A retrospective review of demographics and stage of presentation in patients with ER/PR/Her2-Neu receptor negative (triple negative) breast cancer. 31st Annual San Antonio Breast Cancer Symposium December 2008.
44. Rana F, Jasani N. Racial Discrepancies in Breast Cancer in Urban Hospital Retrospective Analysis. San Antonio Breast Symposium, December 2008 .
45. Zaiden R, Latif N, Pham D, Hosenpud J. Dermatofibroma Protuberans: A case report and review of literature. Accepted in Clinical Advances in Hematology and Oncology. Abstract 12.08.
46. Rana F. A retrospective review of demographics and stage of triple-negative breast cancer. Abstract #30042 IDe11553 www.asco.org and www.jco.org June 2009.
47. Rana F, Garg P, Guthrie TH. Toxicity of adjuvant chemotherapy in elderly breast cancer patients. Journal of Investigative Medicine February 2008.
48. Rana F, Garg P. Factors influencing utilization of hospice care versus aggressive treatment options in pancreatic cancer patients. Journal of Investigative Medicine February 2008, American Society of Clinical Oncology, Annual GI Cancer Symposium Proceedings, January 2008.
49. Garg P, Rana F. Pancreatic cancer and diabetes. Journal of Investigative Medicine February 2008.

DIVISION OF CARDIOLOGY
ACADEMIC YEAR 2009 (7/08 - 6/09)

Highlights

The Division of Cardiology should have a good financial bottom line for FY 09 both on the professional side and technical side (Shands side). For FY 09, Cardiology should finish the year with a positive bottom line on the professional side and will be over flex budget on the hospital bottom line for contribution margin. At this time, financials are current only through April 09.

In FY 09, Cardiology added three new Cardiologists to the group. Two Electrophysiologist joined the group; Dr. Robert Kim joined in September 2008 and Dr. Daniel Katz joined in April 2009. We now have four Electrophysiologist in the Cardiology practice. Also in May of FY 09, the hospital approved capital to put in a new intracardiac recording system in both EP labs. This new technology will not only improve patient care but will also improve procedure time and documentation. The Electrophysiology team will be expanding their programs in the areas of Atrial Fibrillation ablations and sudden death. The Electrophysiology program also has plans of expanding their services into the St. Augustine area in FY 10. In July 09, the Electrophysiology fellowship program will begin with two new fellows joining the program for a yearlong fellowship.

The division continues to practice in Lake City and St. Mary's, Georgia, both being strong practices. The Lake City practice ramped up in volume over the past year with our commitment of having a cardiologist at this practice full time. Lake Shore opened a diagnostic Cath lab in November 07, in collaboration with The CV Center. We continue to provide Medical Directorship for this Catheterization lab. The Division also started seeing patients in Live Oak at Shands Live Oak hospital in November 08. In December 08, our cardiologist started reading all the nuclear studies from Live Oak remotely at the Shands Jacksonville campus. Plans are for Live Oak to obtain an ECHO machine and all ECHO's will be read remotely by our cardiologist in FY 10. We are also exploring the option of placing a cardiologist in the Dowling Park retirement community (just outside Live Oak) a half day a week.

The Peripheral Vascular Program continues to be strong under the leadership of Dr. Luis Guzman. Our volume of peripheral cases has remained steady. We are currently working with the Department of Surgery in regards to adding a Vascular Surgeon who would be shared between Cardiology and the Department of Surgery.

Dr. Lyndon Box is the third Cardiologist who joined our group in FY 10. Dr. Box was an interventional fellow in our program prior to joining on as faculty. Dr. Box has worked very aggressively this year with the local EMS to develop protocols for STEMI patients, develop educational programs for EMT's regarding STEMI's and work with EMS on state and national legislation issues regarding dedicated PCI hospitals. He also has been instrumental in working with local EMS on standardizing the Electronic EKG transmission systems for ambulances. We were able to purchase systems for local EMS program to place in their ambulances so that EKG's could be transmitted directly to the physician/hospital from the field. All devices have been installed and the in-house system is currently being installed in the Emergency Department. This new system should have a great positive effect on door to balloon times. In FY 09 we added a STEMI coordinator to our group to help facilitate the STEMI outreach /community program.

The division has worked closely with the Director of Information Services/Medical Records/Coding in regards to improving documentation and coding for the division. We have regular meetings with the Director to go over outliers in documentation, new guidelines for documentation and coding. The plan is for Cardiology to have dedicated coders in FY 10.

In regards to customer service, we implemented a "customer service initiative" in FY 09. We looked closely at our referral numbers from UF satellite offices. Offices with lower percentages for patients referred to UF Cardiology were targeted initially. Dr. Bass made visits to each office and discussed how we are doing, what we can do to improve our services, what it would take to have 100% referrals from these offices. We also started our "physician of the day" program and "urgent appointment" line program. We gave out laminated cards with one number to call if you need to talk immediately to a Cardiologist or you need to get a patient in same day/next day to be seen by a Cardiologist.

Our Goals for FY 10 are as follows:

- Hire a Cardiologist to develop /lead a Women's Cardiovascular Health Program
- Place a Cardiologist in Callahan office two ½ days a week
- Place a Cardiologist in the Dowling Park area, ½ day a month to start
- Provide EP services in St. Augustine area
- Continue to enhance the STEMI program with more outreach/education to EMS services in all surrounding counties.
- Look at possibility of taking ownership of a leading Cardiovascular journal
- Continue to grow research in all areas of Cardiology
- Enhance relationship with VA in regards to referrals for testing as well as collaboration with their cardiologist
- Develop relationship with department of surgery in regards to vascular support.
- Develop strong relationship with new hospitalist service

Patient Care: As stated above, CV satellite offices continue to expand. Our Lake Shore office provides cardiovascular care (physician visits as well as diagnostic testing) to Lake City and surrounding communities. Physicians rotate to the Lake City office Monday through Friday. We have expanded these services to Live Oak and hope to expand to the Dowling park area.

We continue with the practice in St. Mary's, Georgia. This office is equipped with diagnostic testing equipment (ECHO machine/stress testing). UF cardiologists rotate to the practice Monday through Friday. They cover office visits as well as hospital consults, at Camden Medical Center. We will start performing Carotid ultrasounds in this office in FY 10.

We continue to see an increase in downstream revenue from both of these locations, especially the Lake City office.

We have seen an improvement in our quality scores in AMI and CHF. We still have some improvement to be made in AMI, but just as last year most of our fallouts were not on the Cardiology service. These were patients seen on other services (non-cardiology). Solutions for these issues are being discussed.

Patient Satisfaction scores for both inpatient and outpatient services continue to be above the 85th percentile. Great progress has been made in inpatient patient satisfaction scores in the CCU. Great progress has also been made in wait times for patient undergoing invasive testing (heart cath or EP procedure) in FY 10.

Education: We receive between 400-500 applications per year for five available spots in our Fellowship Program. Applications are screened eighteen months prior to the start of the program. This past year we received 510 applicants thru ERAS (Electronic Residency Application Service) of which 54 were selected for interview. Individuals are invited based on medical school, quality of the medical residency, USME scores, research performed, and letters of recommendations. Faculty evaluates candidates based on interpersonal skills, academic potential, and clinical potential.

Faculty conducts four sessions of Board review for medical residents. Significant changes were made in the CCU service to shorten rounds, enhance teaching, and faculty-resident interaction.

Fellows passing their boards are at 94% and 100% in both the Cardiovascular Disease and Interventional programs.

Research: With the dissolution of the Cardiovascular Imaging Core Laboratory, the division has been actively involved in two main areas of research; clinical research and translational research.

Clinical Research: The division was involved in several multi-center sponsored research projects in the fields of heart failure, arrhythmia (electrophysiology), and coronary artery disease. We currently have 12 active sponsored research projects being conducted at the Division of Cardiology.

Translational Research: Our thrombosis research laboratory continues to grow and mature. In addition, the state of the art assays for platelet function testing the research team has a medical director, a PhD, 4 post-doctoral research fellows, and a laboratory technician. The thrombosis research laboratory currently performs numerous sponsored and investigator initiated studies. The thrombosis research laboratory is among the most involved in the country for pharmacodynamic testing of antiplatelet agents under clinical development. We have also been involved in testing assays for sponsors requiring FDA approval of novel devices. The research group is among the most prolific academically with numerous peer-reviewed publications in major scientific journals.

LISTING OF FACULTY MEMBERS

New Faculty



Robert Kim, M.D., Assistant Professor

Medical School / Graduation date	Tufts University School of Medicine – Boston, MA	1998
Internship/residency and year	St. Elizabeth's Medical Center – Boston, MA/ University of MA Medical Center-Worcester, MA	2001 2004
Subspecialty training and year	Dartmouth-Hitchcock Medical Center – Lebanon, NH	2008



Daniel Katz, M.D., Assistant Professor

Medical School / Graduation date	New Jersey Medical School – Newark, New Jersey	1997
Internship/residency and year	Brown University – Rhode Island	2000
Subspecialty training and year	Albert Einstein College of Medicine – Bronx, New York	2006



Lyndon Box, M.D., Assistant Professor

Medical School / Graduation date	University of Mississippi – Birmingham, Alabama	2001
Internship/residency and year	Carraway Methodist Medical Center/Oregon Health Sciences University	2002 2004
Subspecialty training and year	University of Florida – Jacksonville, Florida	2008

Current Faculty

**Dominick Angiolillo, M.D. Ph.D., Assistant Professor**

Medical School / Graduation date	The Catholic University of the Sacred Heart Medical School, Italy	1997
Internship/residency and year	The Catholic University of the Sacred Heart Medical School, Italy	1997
Subspecialty training and year	University Hospital of Salamanca, Spain/The Policlinico Agostino Gemelli University Hospital, Italy/San Carlos University Hospital	1998 2003

**Theodore Bass, M.D., Professor and Division Chief**

Medical School / Graduation date	Brown University	1976
Internship/residency and year	Mayo Clinic	1979
Subspecialty training and year	Boston University	1981

**Douglas Chapman, M.D., Assistant Professor**

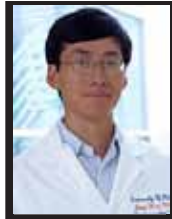
Medical School / Graduation date	Chicago Medical School	1984
Internship/residency and year	University of Missouri	1987
Subspecialty training and year	Michael Reese Hospital	1990

**Donald Conetta, M.D., Associate Professor**

Medical School / Graduation date	Duke University	1970
Internship/residency and year	Georgetown University	1975
Subspecialty training/year	University of Florida	1977

**Luis Guzman, M.D., Assistant Professor**

Medical School / Graduation date	University of Buenos Aires, Argentina	1982
Internship/residency and year	Churruca-Visca Hospital, Argentina	1986
Subspecialty training and year	Instituto Cardiovascular Buenos Aires, Argentina	1989

**Steve Hsu, M.D., Associate Professor**

Medical School / Graduation date	Washington University	1990
Internship/residency and year	Thomas Jefferson University	1993
Subspecialty training and year	Thomas Jefferson University	1997

**Steven Lavine, M.D., Associate Professor**

Medical School / Graduation date	Temple University	1976
Internship/residency and year	Temple University	1979
Subspecialty training and year	Temple University	1981

**Alan Miller, M.D., Professor**

Medical School / Graduation date	University of Pittsburgh	1966
Internship/residency and year	Mount Sinai	1968
Internship/residency and year	George Washington University	1971
Subspecialty training and year	Cleveland Metropolitan Hospital	1973

**David Nabert, M.D., Associate Professor**

Medical School / Graduation date	UMDNJ – New Jersey Medical School	1988
Internship/residency and year	Hackensack University Medical Center	1991
Subspecialty training and year	Ochsner Medical Foundation	1999

**Joseph Pensabene, M.D., Assistant Professor**

Medical School / Graduation date	The Chicago Medical School	1984
Internship/residency and year	Overlook Hospital	1987
Subspecialty training and year	Cardiovascular Disease, Northwestern Memorial Hospital	1990
Subspecialty training and year	Interventional Cardiology, UCLA Medical Center	1991
Subspecialty training and year	Cardiac CT and Cardiac MRI, University of Florida – Jacksonville	2006

**Robert Percy, M.D., Associate Professor**

Medical School / Graduation date	University of Mississippi	1973
Internship/residency and year	University of Mississippi	1977
Subspecialty training and year	Joslin Clinic	1979
Subspecialty training and year	Mass General Hospital	1981

**Martin Zenni, M.D., Associate Professor**

Medical School / Graduation date	University of Chicago	1986
Internship/residency and year	Tufts University	1989
Subspecialty training and year	Harvard Medical School	1992

PUBLICATIONS

Peer reviewed publications:

Ferreiro JL, Angiolillo DJ. Antiplatelet therapy: Clopidogrel plus PPIs-a dangerous combination? *Nat Rev Cardiol.* 2009 Jun;6(6):392-4. PubMed PMID: 19471283.

Suzuki N, Angiolillo DJ, Tannenbaum MA, Driesman MH, Smith C, Bikkina M, Meckel CR, Morales CE, Xenopoulos NP, Coletta JE, Bezerra HG, Bass TA, Costa MA. Strategies for drug-eluting stent treatment of bifurcation coronary artery disease in the United States: insights from the e-Cypher S.T.L.L.R.trial. *Catheter Cardiovasc Interv.* 2009 Jun 1;73(7):890-7. PubMed PMID: 19455662.

Cola C, Brugaletta S, Yuste VM, Campos B, Angiolillo DJ, Sabaté M. Diabetes mellitus: a prothrombotic state implications for outcomes after coronary revascularization. *Vasc Health Risk Manag.* 2009;5(1):101-19. Epub 2009 Apr 8. PubMed PMID: 19436654; PubMed Central PMCID: PMC2672443.

Michelson AD, Frelinger AL 3rd, Braunwald E, Downey WE, Angiolillo DJ, Xenopoulos NP, Jakubowski JA, Li Y, Murphy SA, Qin J, McCabe CH, Antman EM, Wiviott SD; for the TRITON-TIMI 38 Investigators. Pharmacodynamic assessment of platelet inhibition by prasugrel vs. clopidogrel in the TRITON-TIMI 38 trial. *Eur Heart J.* 2009 May 12. [Epub ahead of print] PubMed PMID: 19435740.

- Capranzano P, Ferreiro JL, Angiolillo DJ. Prasugrel in acute coronary syndrome patients undergoing percutaneous coronary intervention. *Expert Rev Cardiovasc Ther.* 2009 Apr; 7(4):361-9. PubMed PMID: 19379060.
- Price MJ, Berger PB, Angiolillo DJ, Teirstein PS, Tanguay JF, Kandzari DE, Cannon CP, Topol EJ. Evaluation of individualized clopidogrel therapy after drug-eluting stent implantation in patients with high residual platelet reactivity: design and rationale of the GRAVITAS trial. *Am Heart J.* 2009 May;157(5):818-24, 824.e1. PubMed PMID: 19376306.
- Angiolillo DJ. Antiplatelet therapy in diabetes: efficacy and limitations of current treatment strategies and future directions. *Diabetes Care.* 2009 Apr; 32(4):531-40. PubMed PMID: 19336638; PubMed Central PMCID: PMC2660456.
- Capodanno D, Angiolillo DJ. Contemporary issues on clopidogrel therapy: a critical appraisal. *Intern Emerg Med.* 2009 Jun;4(3):195-8. Epub 2009 Mar 31. PubMed PMID: 19333714.
- Angiolillo DJ. Platelet function testing in clinical practice: are we ready for prime time? *Rev Esp Cardiol.* 2009 Feb;62(2):113-6. English, Spanish. PubMed PMID: 19232182.
- Tamburino C, Angiolillo DJ, Capranzano P, Di Salvo M, Ussia G, La Manna A, Guzman LA, Galassi AR, Bass TA. Long-term clinical outcomes after drug-eluting stent implantation in unprotected left main coronary artery disease. *Catheter Cardiovasc Interv.* 2009 Feb 15;73(3):291-8. PubMed PMID: 19214963.
- Angiolillo DJ, Bhatt DL, Gurbel PA, Jennings LK. Advances in antiplatelet therapy: agents in clinical development. *Am J Cardiol.* 2009 Feb 2; 103(3 Suppl):40A-51A. Review. PubMed PMID: 19166712.
- Angiolillo DJ. Variability in responsiveness to oral antiplatelet therapy. *Am J Cardiol.* 2009 Feb 2; 103(3 Suppl):27A-34A. Review. PubMed PMID: 19166710.
- Angiolillo DJ. Emerging insights on antiplatelet therapy. Introduction. *Am J Cardiol.* 2009 Feb 2; 103(3 Suppl):1A-3A. PubMed PMID: 19166706.
- Biasucci LM, Liuzzo G, Della Bona R, Leo M, Biasillo G, Angiolillo DJ, Abbate A, Rizzello V, Niccoli G, Giubilato S, Crea F. Different apparent prognostic value of hsCRP in type 2 diabetic and nondiabetic patients with acute coronary syndromes. *Clin Chem.* 2009 Feb; 55(2):365-8. PubMed PMID: 19179271.
- Rossini R, Musumeci G, Lettieri C, Molfese M, Mihalcsik L, Mantovani P, Sirbu V, Bass TA, Della Rovere F, Gavazzi A, Angiolillo DJ. Long-term outcomes in patients undergoing coronary stenting on dual oral antiplatelet treatment requiring oral anticoagulant therapy. *Am J Cardiol.* 2008 Dec 15; 102(12):1618-23. Epub 2008 Sep 24. PubMed PMID: 19064015.
- Angiolillo DJ, Suryadevara S, Capranzano P, Zenni MZ, Guzman LA, Bass TA. Antiplatelet drug response variability and the role of platelet function testing: a practical guide for interventional cardiologists. *Catheter Cardiovasc Interv.* 2009 Jan 1; 73(1):1-14. Review. PubMed PMID: 19089929.
- Angiolillo DJ, Capranzano P, Desai B, Shoemaker SB, Charlton R, Zenni MM, Guzman LA, Bass TA. Impact of P2Y₁₂ Inhibitory Effects Induced by Clopidogrel on Platelet Procoagulant Activity in Type 2 Diabetes Mellitus Patients. *Thromb Res.* 2008 Nov 12. [Epub ahead of print] PubMed PMID: 19012950.
- Angiolillo DJ, Suryadevara S, Capranzano P, Bass TA. Prasugrel: a novel platelet ADP P2Y₁₂ receptor antagonist. A review on its mechanism of action and clinical development. *Expert Opin Pharmacother.* 2008 Nov; 9(16):2893-900. Review. PubMed PMID: 18937620.
- Jiménez-Quevedo P, Suzuki N, Corros C, Ferrer C, Angiolillo DJ, Alfonso F, Hernández-Antolín R, Bañuelos C, Escaned J, Fernández C, Costa M, Macaya C, Bass T, Sabaté M. Vessel shrinkage as a sign of atherosclerosis progression in type 2 diabetes: a serial intravascular ultrasound analysis. *Diabetes.* 2009 Jan;58(1):209-14. Epub 2008 Oct 1. PubMed PMID: 18829988; PubMed Central PMCID: PMC2606874.
- Antonios N, Angiolillo DJ, Silliman S. Hypertriglyceridemia and ischemic stroke. *Eur Neurol.* 2008;60(6):269-78. Epub 2008 Sep 27. Review. PubMed PMID: 18824854.
- Tamburino C, Angiolillo DJ, Capranzano P, Dimopoulos K, La Manna A, Barbagallo R, Tagliareni F, Mangiafico S, Guzman LA, Galassi AR, Bass TA. Complete versus incomplete revascularization in patients with multivessel disease undergoing

percutaneous coronary intervention with drug-eluting stents. *Catheter Cardiovasc Interv.* 2008 Oct 1;72(4):448-56. PubMed PMID: 18814218.

Carlson ER, Percy RF, Angiolillo DJ, Conetta DA. Prognostic significance of troponin T elevation in patients without chest pain. *Am J Cardiol.* 2008 Sep 15;102(6):668-71. Epub 2008 Jun 26. PubMed PMID: 18773985.

Wiviott SD, Braunwald E, Angiolillo DJ, Meisel S, Dalby AJ, Verheugt FW, Goodman SG, Corbalan R, Purdy DA, Murphy SA, McCabe CH, Antman EM; TRITON-TIMI 38 Investigators. Greater clinical benefit of more intensive oral antiplatelet therapy with prasugrel in patients with diabetes mellitus in the trial to assess improvement in therapeutic outcomes by optimizing platelet inhibition with prasugrel-Thrombolysis in Myocardial Infarction 38. *Circulation.* 2008 Oct 14;118(16):1626-36. Epub 2008 Aug 31. PubMed PMID: 18757948.

Angiolillo DJ, Guzman LA. Clinical overview of promising nonthienopyridine antiplatelet agents. *Am Heart J.* 2008 Aug;156(2 Suppl):S23-8. Review. PubMed PMID: 18657683.

Angiolillo DJ, Bates ER, Bass TA. Clinical profile of prasugrel, a novel thienopyridine. *Am Heart J.* 2008 Aug;156(2 Suppl):S16-22. Review. PubMed PMID:18657682.

Angiolillo DJ, Capranzano P. Pharmacology of emerging novel platelet inhibitors. *Am Heart J.* 2008 Aug;156(2 Suppl):S10-5. Review. PubMed PMID: 18657681.

Angiolillo DJ, Guzman LA, Bass TA. Current antiplatelet therapies: benefits and limitations. *Am Heart J.* 2008 Aug;156(2 Suppl):S3-9. Review. PubMed PMID: 18657680.

Angiolillo DJ, Bates ER. Platelet inhibitor therapy: current perspectives and emerging novel agents: introduction. *Am Heart J.* 2008 Aug;156(2 Suppl):S1-2. PubMed PMID: 18657679.

Angiolillo DJ, Capranzano P, Goto S, Aslam M, Desai B, Charlton RK, Suzuki Y, Box LC, Shoemaker SB, Zenni MM, Guzman LA, Bass TA. A randomized study assessing the impact of cilostazol on platelet function profiles in patients with diabetes mellitus and coronary artery disease on dual antiplatelet therapy: results of the OPTIMUS-2 study. *Eur Heart J.* 2008 Sep;29(18):2202-11. Epub 2008 Jun 21. PubMed PMID: 18567918.

Valgimigli M, Campo G, de Cesare N, Vranckx P, Hamon M, Angiolillo DJ, Sabatè M, Ferrari F, Furgieri A, Tumscitz C, Repetto A, Colangelo S, Meliga E, Kubbajeh M, Parrinello G, Percoco G, Ferrari R. Tailoring treatment with tirofiban in patients showing resistance to aspirin and/or resistance to clopidogrel (3T/2R). Rationale for the study and protocol design. *Cardiovasc Drugs Ther.* 2008 Aug;22(4):313-20. Epub 2008 Jun 17. PubMed PMID: 18561010.

Giles T, Miller AB, Elkayam, U et al: Pioglitazone use in early heart failure, *J of Card failure* 2008; 14: 445-452.

Lavine SJ, Conetta DA. Comparison of the effect of pressure loading on left ventricular size, systolic and diastolic function in canines with left ventricular dysfunction with preserved and reduced ejection fraction. *Cardiovasc Ultrasound.* 2008 Nov 18;6:57.

Abstracts:

Lavine SJ. Left ventricular filling pressure can be estimated from systolic arterial pressure and left ventricular relaxation time. *J Am Soc Echocardiogr* 2009; 22; 586 (abstract). Presented at the Scientific Sessions of the American Society Echocardiography, June 2009, Washington, DC.

McMullan L, Smalheiser S, Weisberg I, Percy R, Hsu S, Zenni M, Miller AB: Association of ventricular arrhythmia therapy and extent of scarred myocardium measured by single photon emission computed tomography Imaging in ischemic heart failure patients. *J of Card Failure* 2008; 14; no 6S, pg S58

O'Connor C, Anand I, Fiuzat M, Plehn J, Gottlieb S, Silver M, Lindenfeld J, Miller AB, et al: Additive effects of b 1 389 Arg/Gly alpha 2 c322-325 wt/del genotype combinations on adjudicated hospitalizations and death in the beta blocker evaluation of survival trial (BEST). *J of Card Failure* 2008; 14: no 6S, pg S69

Wang N, Konstam M, Maggioni A, Traver B, Burnett J, Grinfeld L, Swedberg K, Udelson J, Zannand F, Cook T, Zimmer C, O'Connor C, Miller AB, Gheorgiade M: Correlation of ejection fraction to early post discharge sudden death and all cause mortality in the EVEREST trial. *J of Card Failure* 2008; 14: no 6S, pg S71

Wang N, Konstam M, Maggioni A, Traver B, Burnett J, Grinfeld L, Swedberg K, Udelson J, Zannand F, Cook T, Zimmer C, O'Connor C, Miller AB, Gheorgiade M: Post discharge adjudicated outcomes in patients with implantable defibrillators in the EVEREST trial. *J of Card Failure* 2008; 14: no 6S, pg S72

Smalheiser S, McMillan L, Venkataraman R, Percy R, Chapman D, Zenni M, Miller AB: Association of heart failure class and left ventricular dyssynchrony measured by SPECT imaging in ischemic systolic heart failure patients. *J of Card Failure* 2008; 14: no 6S, pg S90

Carson P, Gottlieb S, Anand I, Plehn J, Silver M, Lindenfeld J, O'Connor C, Miller AB et al: Determination of hospitalization type by investigator case report form or adjudication committee in a large heart failure clinical trial (BEST). *J of Card Failure* 2008; 14: no 6S, pg S 93

Miller AB, Reichek N, St. John Sutton M, et al: Comparable blood pressure control and LV mass reduction in patients with hypertension and LVH with ACE inhibitor alone or combined with B blockade 2009; in press *J Amer Soc Hypert* Presented Late Breaking Trials ASH 2009

Jimenez Quevedo P, Sabate M, Corros C, Ferrer M, Alfonso F, Hernandez-Antolin R, Escaned J, Banuelos C, Angiolillo DJ, Macaya C. Insights on the effect of secondary prevention on plaque composition and cardiac events in diabetic patients. *European Society of Cardiology* 2008. Munich, Germany.

Wiviott SD, Antman E, Angiolillo DJ, Meisel , Dalby, Verheugt , Goodman, Murphy, McCabe, Braunwald . Greater effect of intensive antiplatelet therapy with prasugrel compared with clopidogrel in diabetics in TRITON - TIMI 38. *European Society of Cardiology* 2008. Munich, Germany.

Rossini , Musumeci, Lettieri , Molfese, Mantovani Sirbu, Mihalcsik, Spirito, Gavazzi, Angiolillo. Outcomes of long-term triple therapy with aspirin, clopidogrel, and warfarin in patients undergoing coronary stenting. *European Society of Cardiology* 2008. Munich, Germany.

Tamburino, Angiolillo, Capranzano, Di Salvo, Caggeggi, Tomasello, Capodanno, Galassi, Ussia, Bass. Long-term clinical outcomes after drug-eluting stent implantation in unprotected left main coronary artery disease. *European Society of Cardiology* 2008. Munich, Germany.

Angiolillo, Bernardo, Trabetti, Zanoni, Cavallari, Capranzano, Macaya, Pignatti, Fernandez-Ortiz, Bass. Role of MDR-1 gene polymorphisms on clopidogrel responsiveness in patients with coronary artery disease. *European Society of Cardiology* 2008. Munich, Germany.

Frelinger AL , Michelson AD; Braunwald E; Downey WE; Angiolillo DJ; Xenopoulos NP; Jakubowski JA; Li Y; Murphy SA; Qin J; McCabe CH; Antman EM; Wiviott SD, for the TRITON-TIMI 38 Investigators. Pharmacodynamic Assessment of Platelet Inhibition by Prasugrel versus Clopidogrel in the TRITON-TIMI 38 Trial. *American Heart Association* 2008. Chicago, IL.

Capranzano P, Ferreiro JL, Sumner S, Desai B, Charlton RK, Box L, Zenni MM, Guzman LA, Bass TA, Angiolillo DJ, Evaluation of a Modified Light Transmittance Aggregometry Protocol to Assess P2_{Y12} Blockade Induced by Clopidogrel. *American College of Cardiology/i2 Summit* 2009. Orlando, FL.

Angiolillo DJ, Bernardo E, Capranzano P, Sabate M, Ferreiro JL, Alfonso F, Jimenez-Quevedo P, Hernandez R, Guzman LA, Macaya C, Fernandez-Ortiz A, Bass TA. Platelet Disaggregation: a Novel Parameter of Clopidogrel Responsiveness? *American College of Cardiology/i2 Summit* 2009. Orlando, FL.

Capranzano P, Ferreiro JL, Sumner S, Desai B, Charlton RK, Zenni MM, Guzman LA, Bass TA, Angiolillo DJ. Clopidogrel-Induced Antiplatelet Effect Assessment by Flow Cytometry and Point-of-Care Based Assays: Correlation between VASP and VerifyNow P2_{Y12} Testing. *American College of Cardiology/i2 Summit* 2009. Orlando, FL.

Angiolillo DJ, Bernardo E, Capranzano P, Sabate M, Jimenez-Quevedo P, Ferreiro JL, Alfonso F, Hernandez R, Macaya C, Fernandez-Ortiz A, Bass TA. Prognostic Implications of High Platelet Reactivity as Defined by Multiple Agonists in Diabetes Mellitus Patients on Dual Antiplatelet Therapy. *American College of Cardiology/i2 Summit* 2009. Orlando, FL.

CLINICAL ACTIVITIES

Inpatient activity	AY 08/09
CV In PT admissions	2016
Observations	346
Outpatient activity	
Physician clinic visits	*13,757
Cardiac ultrasounds	10,960
Cardiac nuclear studies	3,428
EKGs	55,332
Stress tests	4,430
Heart caths	** 2,488
EP procedures	*** 504
Device placements	305
Cardiac rehab visits	3,074
*Attending and Fellows • Jax Clinic 9,156 • Lake Shore 1,454 • Live oak 227 • St Marys 2,920 *Cath Only = 1638 Coronary = 656 Peripheral = 168	***Includes: Ablations, Cardioversions EP's, & Lead Extractions

CONTRACTS AND GRANTS

Sponsor	Date Begun	Study
Eli Lilly	Jul-06	SWAP
Eli Lilly	Apr-08	TACA
Atra Zeneca	Mar-07	PLATO
Baxter	Jan-08	TRAC-R
Baxter	Jul-06	ACT34
Medtronic	Dec-05	REVERSE
Medtronic	Jan-05	ENDEAVOR IV
Molecular Insight Pharmaceuticals	Sep-07	MIP
Cordis	Mar-08	SAPPHIRE WW
Amgen	Sep-07	RED-HF
Novacardia/Merck	Sep-07	PROTECT
The Medicines Company	Mar-07	CHAMPION PCI
The Medicines Company	Apr-09	CHAMPION Platform
Schering-Plough	Sep-08	TRA2P TIMI 50
Accumetrics	Oct-08	GRAVITAS
Eisai	Jun-08	LANCELOT 201
Portola	Jan-09	INNOVATE-PCI
Cardiokine	Oct-08	BALANCE
Synvista	Jun-08	BREAK-DHF-1
Sanofi Aventis	Jul-08	INTENSIVE
St Jude Medical	May-08	DETERMINE
St Jude Medical	Dec-08	QuickFlex
Momenta	Jun-08	EMINENCE
Johnson & Johnson	Jun-09	ATLAS II TIMI 51
Debiopharm	May-09	IGNITE
Solvay	Apr-09	RenoDefend 1
Biogen Idec	Apr-09	POSEIDON

DIVISION OF ENDOCRINOLOGY, DIABETES AND METABOLISM
ACADEMIC YEAR 2009 (7/08 - 6/09)**Highlights**

The Division of Endocrinology, Diabetes, and Metabolism had a year of rapid growth and development in all areas of the academic mission of the University of Florida. Clinically, major events included expansion and centralization of clinical services, growth of the endocrinology fellowship and developing a clinical research program. Academically, the division submitted multiple publications and contributed immensely to the educational component of the University's mission in many training programs at the University of Florida as well as non-university affiliated health care providers.

Patient care: The Division provides inpatient and outpatient consultation for the University of Florida Jacksonville campus and satellite offices as well as for referring physicians in the Northeast Florida and Southern Georgia region. Dr. Joe Chehade, Dr. Arshag D. Mooradian, Dr. Mae Sheikh-Ali, and Dr. Kent R. Wehmeier are the core clinical faculty. The Division addresses clinical endocrinology problems related to diabetes mellitus, metabolic syndrome, obesity, pituitary, thyroid, adrenal, and sex hormone gland dysfunction. Patients with metabolic disorders including cholesterol, calcium, and metabolic diseases such as osteoporosis and vitamin D deficiency are evaluated and treated. Thyroid needle biopsy procedures under ultrasound guidance are offered and utilized by the division for the management of thyroid disorders. The Division also coordinates outpatient and inpatient education services that includes diabetic educators and implemented new devices that continuously monitor glucose levels for more intensive metabolic control in patients with diabetes mellitus. A multidisciplinary approach with the support of neurosurgery, ophthalmology, otolaryngology and radiation oncology is utilized in the management of patients with pituitary disease.

Education: The most significant event this year was ACGME accreditation with commendation of the Endocrinology fellowship in May 2008. The program received a two-year provisional accreditation, which began in July 2008 with two fellows and under the direction of Dr. Wehmeier. Dr. Abdul Alamir and Dr. Senan Sultan began their first year of fellowship in July of 2008. They have contributed immensely to the clinical care, education, and research mission of the division. In residency education, Dr. Wehmeier served the Internal Medicine Core Program as Director of Relevant Educational Programs in Endocrinology. He is the primary liaison between the Core Residency Program and the division, and is a member of the Resident Education Committee. Dr. Joe Chehade and Dr. Mae Sheikh-Ali made major contributions to the training of the Internal Medicine Core program residents with didactic presentations, Board review questions, and bedside teaching.

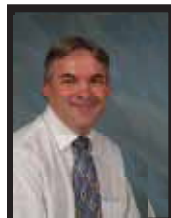
Dr. Chehade, Dr. Sheikh-Ali and Dr. Wehmeier participated in the Internal Medicine Update discussing endocrinology topics of interest for the greater Jacksonville area.

Research: Under the direction of Dr. Michael Haas, the basic science programs in the area of hormone action in oncology and atherosclerosis moved forward. Multiple grant applications have been submitted to potential funding sources and in return several awards have been received. Multiple manuscripts have been submitted as a result of the work conducted at the Endocrine labs. Both Dr. Alamir and Dr. Sultan were recognized at the annual Research Day of the UF College of Medicine Jacksonville with a cash award for their work in gene expression. The clinical program has been recruiting industry-sponsored protocols in the area of diabetes and osteoporosis research. Marinella Lipiniski, Research Coordinator, has been a great asset in creating these new venues for investigation.

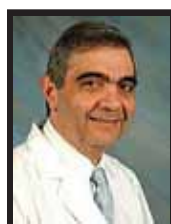
LISTING OF FACULTY MEMBERS

**Joe Chehade, M.D., Associate Professor**

Medical School / Graduation date	St. Joseph University School of Medicine, Beirut-Lebanon	1992
Internship/residency and year	Staten Island University Hospital	1997
Subspecialty training and year	Saint Louis University School of Medicine	1997

**Michael Haas, Ph.D., Research Associate Professor**

Graduate School/Graduation date	University of Nebraska Medical Center	1991
Post-Graduate Training and year	McArdle Laboratory for Cancer Research	1994

**Arshag D. Mooradian, M.D. Professor and Chairman, Department of Medicine**

Medical School / Graduation date	American University of Beirut	1980
Internship/residency and year	American University of Beirut	1982
Subspecialty training and year	University of Minnesota	1985

**Mae Sheikh-Ali, M.D., Assistant Professor**

Medical School / Graduation date	Damascus University School Medicine	1999
Internship/residency and year	Drexel University College Of Medicine	2005
Subspecialty training and year	Mayo Clinic, Jacksonville, Florida	2007

**Kent Wehmeier, M.D., Associate Professor and Division Chief**

Medical School / Graduation date	University of Missouri-Columbia	1988
Internship/residency and year	Barnes-Jewish Hospital, Washington University	1991
Subspecialty training and year	Saint Louis University School of Medicine	1993

PUBLICATIONS

Sheikh-Ali M and **Chehade J**. A rational approach to initiation of insulin therapy in older adults. *Geriatrics & Aging* 2009 (in press)

Chehade J, **Sheikh-Ali M**, Alexandraki I, House J, **Mooradian A**, The Effect of Health Care Provider Education on Diabetes Management of Hospitalized Patients. *International Journal of Clinical Practice* 2009 (in press)

Sheikh-Ali M, **Chehade J** and **Mooradian A**. The Antioxidant Paradox in Diabetes Mellitus. *American Journal of Therapeutics* 2009 (in press).

Sheikh-Ali M, Sultan S, Alamir A, Haas M, Mooradian A. Hyperglycemia-Induced Endoplasmic Reticulum Stress in Endothelial Cells. *Nutrition* 2009 (in press).

Le T, Bhushan V, **Sheikh-Ali M**, Abushahin F. First Aid for the USMLE STEP 2 CS, third edition, McGraw-Hill 2009 (in press)

Alcalde R, **Sheikh-Ali M**. Growth Hormone Deficiency BMJ Best Practice (in press)

Alamir A, **Sheikh-Ali M**. Thyroid Function Testing Epocrates-BMJ publishing. July 09

Cehade JM, Wood DL, Fox LA, Palacio C. Management of Diabetes in the Adolescent and Young Adult During Transition. Northeast Florida Medicine. Volume 59, Number 4, Winter 2008.

Cehade JM, Sheikh-Ali M, Mooradian AD. Antioxidant Vitamins Micronutrients and Their Role in Diabetes. Diabetes Forecast (in press)

Cehade JM, **Sultan S**. Evaluation of pituitary tumors. Epocrates-BMJ publishing. July 09

Wehmeier KR. Disorders of Calcium Metabolism. Schmitz P, Martin K and Miller D (eds) In Internal Medicine: Just The Facts McGraw-Hill, New York. 2008.

Wehmeier KR. Metabolic Bone Diseases. Schmitz P and Miller D (eds) In Internal Medicine: Just The Facts McGraw-Hill, New York. 2008.

Wehmeier KR, Mazza A, Hachem S, Ligaray K, **Mooradian AD**, Wong NCW, **Haas MJ**. Differential regulation of apolipoprotein A-I gene expression by vitamin D receptor modulators. Biochim Biophys Acta. 1780: 264-273. 2008.

Wehmeier KR. The Thrifty Economy: Energy Storage and the Obesity Epidemic. Northeast Florida Medicine 59: 10-17. 2008.

Wehmeier KR and Wood D. Evaluation and Treatment of Bone Diseases in Youth with Chronic Health Conditions. Northeast Florida Medicine 59: 35-42. 2008.

Mooradian AD, **Haas MJ**, Wong, NCW., and **Wehmeier, KR**. Obesity-related changes in high-density lipoprotein metabolism. Obesity 16:1152-1160, 2008.

Wehmeier, KR, Mazza A, Hachem S, Ligaray K, **Mooradian AD**, Wong, NCW, and **Haas, MJ**. Differential regulation of apolipoprotein A-I gene expression by vitamin D receptor modulators. Biochimica et Biophysica Acta, 1780:264-273, 2008.

Lowman E, **Mooradian AD**. Macromelia masquerading as an acromegaloid syndrome in an adult with Klippel-Trenaunay syndrome. Endocrine Practice. 14:109-111, 2008.

Mooradian AD. Asymptomatic hyperthyroidism in older adults? Is it a distinct clinical and laboratory entity? Drugs & Aging 25(5):371-80, 2008.

American Diabetes Association, Bantle JP, Wylie-Rosett J, Albright AL, Apovian CM, Clark NG, Franz MJ, Hoogwerf BJ, Lichtenstein AH, Mayer-Davis E, **Mooradian AD**, Wheeler ML. Nutrition recommendations and interventions for diabetes: a position statement of the American Diabetes Association. Diabetes Care. Jan;31 Suppl 1:S61-78, 2008.

Palacio C, Masri G, **Mooradian AD**. Black cohosh for the management of menopausal symptoms: a systematic review of clinical trials. Drugs Aging. 26:23-36, 2009.

Mooradian A and the Bypass Angioplasty Revascularization Investigation 2 Diabetes Study Group. Baseline characteristics of patients with diabetes and coronary artery disease enrolled in the Bypass Angioplasty Revascularization Investigation 2 Diabetes (BARI 2D) trial. Am. Heart J. 156:528-536, 2008.

Alexandraki A, Palacio CC, House J, Catalano C, **Mooradian AD**. Resource-based relative value scale analysis between teaching and non-teaching hospitalist services. Health Care Manag (Frederick). 28:81-5, 2009.

Palacio CC, Alexandraki I, House J, **Mooradian AD**. A comparative study of unscheduled hospital readmissions in a resident staffed teaching service and a hospitalist based service. Southern Medical Journal 102:145-149, 2009.

Mooradian AD. Dyslipidemia of type 2 diabetes mellitus. Nature Clinical Practice Endocrinology & Metabolism. 5:150-9 2009.

Pambianco G, Lombardero M, Bittner V, Forker A, Kennedy F, Krishnaswami A, **Mooradian AD**, Pop-Busui R, Rana JS, Rodriguez A, Steffes M, Orchard TJ and the BARI 2D Investigators. Control of lipids at baseline in the bypass angioplasty revascularization investigation 2 diabetes (BARI 2D) trial. Preventive Cardiology 12: 9-18, 2009.

Pop-Busui R, Lu J, Lopes N, Jones TL, BARI 2D Investigators (**Mooradian A**). Prevalence of diabetic peripheral neuropathy and relation to glycemic control therapies at baseline in the BARI 2D cohort. J Peripher Nerv Syst. 14:1-13, 2009.

Schwartz L, Kip KE, Alderman E, Lu J, Bates ER, Srinivas V, Bach RG, Mighton LD, Feit F, King S 3rd, Frye RL; BARI 2D Study Group (**Mooradian A**). Baseline coronary angiographic findings in the Bypass Angioplasty Revascularization Investigation 2 Diabetes trial (BARI 2D). Am J Cardiol. 103:632-638, 2009.

BARI 2D Study Group (**Mooradian A**), Frye RL, August P, Brooks MM, Hardison RM, Kelsey SF, MacGregor JM, Orchard TJ, Chaitman BR, Genuth SM, Goldberg SH, Hlatky MA, Jones TL, Molitch ME, Nesto RW, Sako EY, Sobel BE. A randomized trial of therapies for type 2 diabetes and coronary artery disease. N. Engl J Med. 360 :2503- 15, 2009

Book chapters:

Chegade J, **Mooradian AD**. Drug Therapy: Current and emerging agents in hyperglycemia. In: Diabetes in Old Age. 3rd edition, A.J, Sinclair (ed), John Wiley & Sons Ltd., 2009.

National/ International presentations:

Sheikh-Ali, M., Sultan, S., Alamir, A.-R., Haas, M.J., and **Mooradian, A.D**. Hyperglycemia-induced endoplasmic reticulum stress in endothelial cells: evidence for mitochondrial origin of the stress signal. Endocrine Society 91st Annual Meeting, Washington DC, 2009.

Alamir, A.-R., Wehmeier, K.R., Sultan, S., Haas, M.J., Wong, N.C.W., and **Mooradian, A.D**. Regulation of apolipoprotein A-I gene expression by the vitamin D metabolite 24, 25-dihydroxycholecalciferol. Endocrine Society 91st Annual Meeting, Washington DC, 2009.

Sultan, S., Sheikh-Ali, M, Alamir, A.-R., Haas, M.J., and **Mooradian, A.D**. Uncoupling of hyperglycemia-induced oxidative stress and endoplasmic reticulum stress in endothelial cells. Endocrine Society 91st Annual Meeting, Washington DC, 2009.

Mooradian AD. Obesity in the elderly. 9th Annual Conference in obesity, University of Southern Florida, Clearwater FL, 2008.

Mooradian AD. Dietary guidelines for diabetes. 9th Annual Conference in obesity, University of Southern Florida, Clearwater FL, 2008.

Mooradian AD. ADA nutrition guidelines for people with diabetes. 10th symposium of Diabetes and Endocrinology, Saint Louis University, Saint Louis, MO. 2008

Vega, KJ, Carlos Palacio, C, **Mooradian A**. Validation of a gastroesophageal reflux questionnaire for use in African Americans. Digestive Disease Week, Chicago, IL, June 2, 2009.

CLINICAL ACTIVITIES

Inpatient Activity	FY 08/09
Number of IP Consults	485
Outpatient Activity	
Clinic Visits	4703
Thyroid Biopsies	165

GRANTS AND CONTRACTS

Principal Investigator	Sponsor/Title	Project period	Total direct costs
Abdul Alamir, MD	Endocrine Fellows Foundation	08/09	20,000.00
Abdul Alamir, MD	Deans Fund Research Award for Residents and Fellows	08/09	5,000.00
Joe M Chehade, MD	Amylin Pharmaceuticals, Inc.	01/09	21,000.00
Mae Sheikh-Ali, MD	Novo Nordisk Protocol		
Kent R. Wehmeier, MD	Novo Nordisk Protocol		

DIVISION OF GASTROENTEROLOGY
ACADEMIC YEAR 2009 (7/08 – 6/09)

Highlights

The Division of Gastroenterology had an outstanding 2008-2009 fiscal year. Clinically, the Division saw outpatients at the on-campus Ambulatory Care Center (ACC), Emerson Gastroenterology Clinic (Emerson), Northside Multi-specialty Clinic (Northside Clinic Closure 5/09), Shands Jail Clinic, UF Jacksonville Faculty Clinic, Beaches Digestive Clinic, and the Southside Digestive Clinic. Ambulatory motility studies, capsule endoscopy, and diagnostic breath tests were performed at Emerson. Endoscopy procedures were performed at Shands Jacksonville Medical Center and the Medical Partners Surgery Center at Emerson. The research operation saw us acquiring several industry sponsored grants. We presented abstracts at the American College of Gastroenterology meeting, as well as Digestive Disease Week. Dr. Louis Lambiase, who was the chief of the division for the last ten years, accepted a position as Vice Dean at the University of Tennessee, Chattanooga, TN.

Patient Care: The patient care aspect of the academic mission is pursued by the Division through three University of Florida clinics, the provision of inpatient consult services at Shands Jacksonville, inpatient and outpatient GI services at Baptist Medical Center Beaches and St. Luke's Hospital. The Division continues to be the leader in Northern Florida in the treatment of viral hepatitis and staffs a gastrointestinal motility laboratory that is among the most active in the state. We provide two special clinics per week caring for patients with inflammatory bowel disease.

Education: The division is involved in the teaching for the residency program. Coordinated by Dr. Ravi Kottoor, the division conducted resident rotations for inpatient gastroenterology consults and ambulatory gastroenterology. Our faculty taught residents in morning report, noon resident conference, and internal medicine grand rounds.

The division conducts a Gastroenterology Fellowship Program which consists of two fellows a year for three years. The program continues its 100% board passing rate by previous year's graduates. After a site visit conducted by the ACGME, the program was granted accreditation for the next three and a half years.

Research: Divisional research activities include clinical trials and giving presentations at regional and national meetings. A breakthrough work in Hepatitis C, done by Dr. Xiaoyu Li, has been accepted to be published in the Journal of Viral Research and is available on-line as of August 29, 2009.

LISTING OF FACULTY MEMBERS



Robert Bass, M.D., Assistant Professor

Medical School / Graduation date	Medical College of Georgia	1988
Internship/residency and year	University of South Alabama	1991
Subspecialty training and year	University of Florida – Jacksonville	1993



Samir Habashi, M.D., Assistant Professor

Medical School / Graduation date	Ain-Shams University, Cairo, Egypt	1985
Internship/residency and year	University of Florida - Jacksonville	2003
Subspecialty training and year	University of Florida - Jacksonville	2007

**Ravi Kottoor, M.D., Associate Professor**

Medical School / Graduation date	Kasturba Medical College, India	1970
Internship/residency and year	Ottawa Civic Hospital	1974
Subspecialty training and year	Dalhousie University, Canada	1975

**Louis Lambiase, M.D., M.H.A., Associate Professor and Division Chief**

Medical School / Graduation date	University of Miami	1987
Internship/residency and year	University of Pittsburgh	1990
Subspecialty training and year	University of Florida	1992
Graduate degree and year	University of North Florida	2006

**Xiaoyu Li, M.D., Ph.D., Assistant Professor**

Medical School / Graduation date	Harbin Medical University, China	1983
Internship/residency and year	Mt Sinai School of Medicine	2004
Subspecialty training and year	University of Florida	2007
Graduate degree and year	State University of New York	2001

**Juan Munoz, M.D., Assistant Professor**

Medical School / Graduation date	Universidad Complutense, Spain	1991
Internship/residency and year	University of Florida – Jacksonville	2001
Subspecialty training and year	University of Florida – Jacksonville	2004

**Paul Sievert, M.D., Assistant Professor**

Medical School / Graduation date	University of Miami	1996
Internship/residency and year	Medical College of Virginia	1999
Subspecialty training and year	University of Florida – Jacksonville	2003

**Kenneth Vega, M.D., Associate Professor**

Medical School / Graduation date	Cornell University Medical College	1988
Internship/residency and year	Boston University School of Medicine	1991
Subspecialty training and year	Temple University Hospital	1995

PUBLICATIONS

Peer Reviewed Manuscripts:

Modified technique to extract malpositioned or migrated self-expanding stents from the esophagus and stomach. **Munoz JC**, Khoury JE, Alizadeh M, Pudhota S, Smith-McCutchen A, Corregidor AM, Lambiase LR, **Vega KJ**. *J Gastroenterol Hepatol.* 2009 Apr;24(4):547-51. Epub 2009 Feb 9.

Safety and antiviral activity of albinterferon alfa-2b in prior interferon nonresponders with chronic hepatitis C. Nelson DR, Rustgi V, Balan V, Sulkowski MS, Davis GL, Muir AJ, **Lambiase LR**, Dickson RC, Weisner RH, Fiscella M, Cronin PW, Pulkstenis E, McHutchison JG, Subramanian GM. *Clin Gastroenterol Hepatol.* 2009 Feb; 7(2):212-8. Epub 2008 Nov 7.

Jamal MM, Samarasena J, Hashemzadeh MS, **Vega KJ**. Declining hospitalization rate of esophageal variceal bleeding in the United States. *Clin Gastroenterol Hepatol* 2008; 6:689-695.

Vega KJ, Langford-Legg T, Jamal MM. Ethnic variation in lower esophageal sphincter pressure and length. *Aliment Pharmacol Ther* 2008; 28: 655-659.

Vega KJ, Jamal MM. Hispanic Americans and esophageal manometry. *J Clin Gastroenterol* 2009; 43: 197-198.

Munoz JC, Vega KJ. Endoscopic removal of hollow colorectal foreign bodies with the use of a balloon catheter: response. *Gastrointest Endosc* 2009; 69: 605.

Reddy S, Sullivan R, Zaiden R, Lopez de Mendoza V, Naik N, **Vega KJ**, Nahman Jr NS, Alexandraki I. Hepatitis C infection and the risk of bacteremia in hemodialysis patients with tunneled vascular access catheters. *South Med J* 2009; 102: 374-377.

Chisholm S, Gummadi B, **Vega KJ**, House J. Sandostatin causing reversible thrombocytopenia. *Eur J Gastroen Hepat* 2009; 21: 474-5.

Habashi S, Draganov PV Pancreatic Pseudocyst *World J Gastroenterol*. 2009 Jan 7; 15(1):38-47

Vega KJ, Chisholm S, Jamal MM. The spectrum of reflux esophagitis is equivalent between African Americans and non-Hispanic whites. In press, *World J Gastroenterol*, 2009

Munoz J.C, Cole M Recurrent Gastrointestinal Bleeding in a 64-Year-Old Woman. Clinical Case. *eMedicine*, March 2009.

Munoz J.C and Pudhota S Large Inverted Diverticulum Simulating a Large Polyps Clinical challenge and image in GI Gastroenterology Ms No GASTRO-D-09-00290R1

Abstracts:

Juan C. Munoz, Sunitha Pudhota, Aja S. Smith and **Kenneth Vega**. Modified technique to extract malpositioned or migrated self-expanding stents from the esophagus and stomach. American College of Gastroenterology meeting.

Juan C. Munoz, Aja S. Smith Division Unusual Objects Removed from Unusual Patients: A Case Series and Literature Review American College of Gastroenterology meeting.

Aja S. Smith, **Juan C. Munoz**, and **Kenneth Vega**. Nutritional differences at the time of colorectal cancer diagnosis: a potential explanation for disparities in outcome between African Americans and non-Hispanic Whites. American College of Gastroenterology (ACG) meeting.

Vega KJ, Langford-Legg TL, Jamal MM. Gender variation in lower esophageal sphincter pressure and length. *Am J Gastroenterol* 2008; 103 (S1): S2. (Poster presentation, ACG 2008)

Pudhota S, DiTeodoro LA, **Vega KJ**, Wludyka P, Bullock D, Lambiase LR. Ultrasound marking improved percutaneous liver biopsy yield. *Am J Gastroenterol* 2008; 103 (S1):AS144. (Poster presentation, ACG 2008)

Smith AS, Cole M, **Vega KJ**, Munoz JC. Palliation of malignant rectosigmoid obstruction secondary to locally invasive prostate cancer with multiple overlapping self-expanding metal stents. *Am J Gastroenterol* 2008; 103 (S1): S348-9. (Poster presentation, ACG 2008)

Vega KJ, Palacio C, Jamal MM. Validation of a gastroesophageal reflux questionnaire for use in African Americans. Accepted for presentation, DDW 2009.

Chisholm S, Khoury JE, Jamal MM, **Vega KJ**. The frequency of confirmed Barrett's esophagus varies by ethnicity and gender. Accepted for presentation, DDW 2009.

Reddy S, Ramsubeik K, Federico J, Goodwich R, Palacio C, **Vega KJ**. Do HbA1C levels correlate with delayed gastric emptying in diabetic patients? Accepted for presentation, DDW 2009.

Luyu Yao, Haizhen Zhu, Yiling, Xu, **Louis R. Lambiase**, David R. Nelson, Chen Liu, **Xiaoyu Li** M1808. Inhibition of Hepatitis C Viral (HCV) Replication By In Vitro Dimerization of IFN Regulatory Factor-3 (IRF3) Accepted poster DDW 2009

Sunitha Pudhota, Melvin D. Bullock, **Louis R. Lambiase**, **Ravi Kottoor** Retrospective Analysis of Predicting Factors for Complications of Colonoscopy Accepted Poster DDW 2009.

HONORS AND AWARDS

Dr. Aja Smith-McCutchen was the recipient of the "System Based Improvement" award given by the Division of Internal Medicine.

CLINICAL ACTIVITIES

Inpatient Activity	AY 08/09
Number of IP Consults	1446
Shands Jacksonville Inpatient Procedures	1356
Baptist Beaches Inpatient Procedures	84
St. Lukes Inpatient Procedures	5
Outpatient Activity	
Clinic Visits	13793
Shands Jacksonville Outpatient Procedures	4547
Jacksonville Beach Surgery Center Outpatient Procedures	729
Jacksonville Surgery Center	648
Medical Partners Surgery Center	704

GRANTS AND CONTRACTS

PI	TITLE	BUDGET BEGIN	BUDGET END	SPONSOR	AWARD AMT
KOTTOOR	A Phase IIb, Randomized, Double-Blind, Placebo Controlled Study for the Treatment of Active Celiac Disease with AT-1001	7/31/08	5/2/09	ALBA THERAPEUTICS CORP	\$4,500.00
KOTTOOR	A Phase 3 Multicenter, Randomized, Placebo-controlled, Double-blind Study to Evaluate the Safety and Efficacy of Golimumab Maintenance Therapy, Administered Subcutaneously, in Subjects with Moderately to Severely Active Ulcerative Colitis	8/28/08	8/31/09	CENTOCOR	\$4,938
KOTTOOR	A Phase 2/3 Multicenter, Randomized, Placebo-controlled, Double-blind Study to Evaluate the Safety and Efficacy of Golimumab Induction Therapy, Administered Intravenously, in Subjects with Moderately to Severely Active Ulcerative Colitis	8/28/08	4/17/10	CENTOCOR	\$10,778
KOTTOOR	A randomized, double-blind, placebo-controlled, parallel group, multi-center study to investigate the safety and efficacy of CP-690,550 in subjects with moderate to severe Crohn's Disease	5/16/08	3/10/10	PFIZER INC	\$11,966.25
KOTTOOR	A Multi-center, Investigator-blinded, Randomized, 12-month, Parallel-group, Non-inferiority Study to Compare the Efficacy of 1.6 to 2.4g Asacol Therapy QD Versus Divided Dose (BID) in the Maintenance of Remission of Ulcerative Colitis	3/12/08	11/14/08	PROCTER AND GAMBLE	\$10,906.25
KOTTOOR	A Prospective Study Quantitating Fecal TNF-ALPHA In Active IBD Compared To Other Forms Of AcuteE Enterocolitis	1/15/08	3/6/09	UCB PHARMA INC	\$15,625.00
LAMBIASE	Protocol 0000810: An Open-Label Clinical Study Evaluating the Long Term Safety of ALTU-135 in the Treatment of Patients with Exocrine Pancreatic Insufficiency ue to Chronic Pancreatitis or Pancreatectomy	10/16/07	8/23/09	ALTUS PHARMACEUTIC ALS	\$12,967.00
LAMBIASE	A Phase 3, Randomized, Multi-Center Study to Evaluate the Efficacy and Safety of Albumin Interferon Alfa-2b in Combination with Ribavirin Compared with Peginterferon Alfa-2a in Combination with Ribavirin in Interferon Alfa Naïve Subjects with Chronic Hepatitis C Genotype 1. ACHIEVE-1	2/19/07	12/12/09	DUKE UNIV	\$32,146.83

LAMBIASE	A Phase 3, Randomized, Multi-Center Study to Evaluate the Efficacy and Safety of Albumin Interferon Alfa-2b (alb-IFN) in Combination with Ribavirin Compared with Peginterferon Alfa-2a (PEGASYS or PEG-IFNa2a) in Combination with Ribavirin in Interferon Alfa Naive Subjects with Chronic Hepatitis C Genotype 2 or 3. ACHIEVE-2/3	2/19/07	1/24/09	DUKE UNIV	\$22,795.95
LAMBIASE	An extension protocol to evaluate the long-term effects of treatment with peginterferon alfa-2a (PEG-IFN)- or interferon (IFN)- based therapies for patients with chronic hepatitis C	10/4/05	7/15/09	HOFFMANN LA ROCHE INC	\$5,075.00
LAMBIASE	A Randomized, Multicenter, Double Blinded, Phase IV Study Comparing the Safety and Efficacy of Pegasys® 180µg plus Copegus® 1000 or 1200 mg to the Currently Approved Combination of Pegasys® 180µg plus Copegus® 800 mg in Interferon-naïve Patients with Chronic Hepatitis C Genotype 1 virus infection coinfectd with human immunodeficiency virus (HIV-1)	5/16/06	4/30/09	HOFFMANN LA ROCHE INC	\$2,311.63
LAMBIASE	Randomized, Multicenter, Double-Blinded, Phase IV Study Evaluating the Efficacy (as Measured by Sustained Virological Response) and Safety of 360 mcg Induction Dosing of Pegasys® in Combination with Higher Copegus® Doses in Treatment-naïve Patients with Chronic Hepatitis C Genotype 1 Virus Infection of High Viral Titer and Baseline Body Weight Greater than or Equal to 85 kg	12/19/06	8/17/09	HOFFMANN LA ROCHE INC	\$1,732.00
LAMBIASE	An Open-label, Roll-over Safety Study of AGI-003 (Arverapamil) in the Treatment of Irritable Bowel Syndrome with Diarrhea (IBS D)	12/17/07	11/21/08	PPD DEVELOPMENT	\$2,066.25
LAMBIASE	A Randomized, Double-blind, Placebo-controlled Study of AGI-003 (Arverapamil) in the Treatment of Irritable Bowel Syndrome with Diarrhea (IBS-D)	12/17/07	11/21/08	PPD DEVELOPMENT	\$625.00
LAMBIASE	A Phase III, Multicenter, Open Label, Extension Study to Evaluate the Long-term Safety of Renzapride 4 mg Once Daily in Women with Constipation-Predominant Irritable Bowel Syndrome (c-IBS)	1/6/06	11/30/08	ALIZYME THERAPEUTICS	\$3,470.00
LAMBIASE	A Phase III, Multicenter, Randomized, Double-Blind, Placebo-Controlled, Parallel Group Study of Renzapride in Women with Constipation-Predominant Irritable Bowel Syndrome (c-IBS)	9/15/05	11/30/08	ALIZYME THERAPEUTICS	\$3,737.00
LAMBIASE	A PHASE 3, SAFETY & EFFICACY STUDY OF BOCEPREVIR IN PREVIOUSUNTREATED SUBJECTS WITH CHRONIC HEPATITIS C GENOTYPE 1	8/1/08	9/10/09	SCHERING PLOUGH RES INST	\$21,957.30
LI	A double-blind, randomized, placebo-controlled, parallel group study of rimonabant 20 mg daily for the treatment of Type 2 diabetic patients with nonalcoholic steatohepatitis (NASH)	9/26/08	7/9/09	SANOFI AVENTIS	\$3,000.00
LI	A double-blind, randomized, placebo-controlled, parallel group study of rimonabant 20 mg daily for the treatment of non-diabetic patients with nonalcoholic steatohepatitis (NASH)	9/26/08	7/10/09	SANOFI AVENTIS	\$3,000.00
VEGA	Validation of The GERQ for Use in African Americans	1/1/05	10/31/09	ASTRAZENECA	\$16,666.67
				TOTAL	\$190,263.88

DIVISION OF GENERAL INTERNAL MEDICINE
ACADEMIC YEAR 2009 (7/08 - 6/09)

Highlights

The Division continues a robust inpatient and outpatient practice and is an integral part of the educational experience for the Internal Medicine residency.

Patient Care: The Division of General Internal Medicine is comprised of 12 members who are board certified in Internal Medicine. Their clinical care includes: the provision of inpatient care as the attendings for the four inpatient teaching services, outpatient care at three locations: the ACC, Faculty Clinic and the UF Multispecialty Clinic on Emerson, an inpatient Internal Medicine consultation service and medical evaluation of patients admitted to the Psychiatry service. The division has experienced significant growth in its outpatient practice as the newer physicians in the group have established themselves as excellent clinicians. JaxHATS (Jacksonville Health and Transition Services) clinic held on Tuesday and Thursday mornings continues as a model program for the transition of adolescents and youth with special healthcare needs from their pediatricians to adult providers. Dr. Edwards works with Dr. Wood, a general pediatrician, to staff this clinic. JaxHATS serves as a medical home for these young people.

Education: The Division provides faculty supervision of residents on the four general internal medicine inpatient teaching services, inpatient medicine consultation service and geriatrics. The division also provides faculty supervision and mentoring of all categorical medicine residents in their outpatient continuity practice and urgent care clinics.

Dr. Sottile continues to serve as a facilitator for the "Teaching Residents to Teach" seminar -a 6-8 hour intradepartmental seminar offered each year at the University of Florida Health Science Center/Jacksonville. Dr. Sottile also served as a facilitator at a one day seminar "Clinical Teaching" in conjunction with the national ACP meeting.

Drs. Jeff House and Senthil Meenrajan are Associate Program Directors for the Internal Medicine Residency Program. Drs. Alexandraki and Palacio serve as Associate Clerkship Director and Clerkship Director for medical students from Gainesville who rotate on the Internal Medicine service (inpatient and outpatient). Dr. Jeff House also coordinates monthly M&M/QA for the training program. Drs. Alexandraki, Edwards, House and Meenrajan also serve as key clinical faculty for the Core Training Program in Internal Medicine.

Drs. Edwards, House and Sottile serve on the House Staff Evaluation Committee. Drs. Alexandraki, Edwards, House and Meenrajan serve on the Resident Education Committee. All members of the division have participated in and/or presented at the noon conference core curriculum series held daily as well as the Friday afternoon ambulatory didactic sessions and Board review.

Most of the members of the division participated in the 2009 Update in Internal Medicine, held at Amelia Island Plantation. Drs. Edwards and Halperin were co-directors for the program. It was an excellent program. A dinner honoring Malcolm Foster, MD for his contributions to Internal Medicine was held in conjunction with the meeting. A number of Dr. Foster's previous chief residents were able to attend and shared their experiences with Dr. Foster and how meaningful his mentorship has been to them.

Research: Research in the division continues to focus on continuing medical education, clinical research, and faculty facilitation of resident research projects. Drs. House and Meenrajan worked with resident recipients of the Dean's Fund Research Awards. Drs. House, Alexandraki and Palacio have a number of projects underway.

LISTING OF FACULTY MEMBERS

**Irene Alexandraki, M.D., Assistant Professor**

Medical School / Graduation date	University of Athens, Greece	1989
Internship/residency and year	Hahnemann University Hospital	1998
Subspecialty training and year	Baylor College of Medicine (Infectious Disease)	2001

**Linda Edwards, M.D., Associate Professor, Associate Chairman and Division Chief**

Medical School / Graduation date	East Carolina University	1981
Internship/residency and year	Jacksonville Health Education Programs	1985

**Malcolm Foster, M.D., Professor**

Medical School / Graduation date	Bowman Gray School of Medicine	1963
Internship/residency and year	University of Florida, Gainesville	1966
Subspecialty training and year	University of Florida, Gainesville (Infectious Disease)	1967

**Alan Halperin, M.D., Professor**

Medical School / Graduation date	University of Kansas	1971
Internship/residency and year	University of Wisconsin	1974

**Jeffrey House, D.O., Assistant Professor**

Medical School / Graduation date	Nova Southeastern College of Osteopathic Medicine	1997
Internship/residency and year	University of Florida – Jacksonville	2001

**Ghania Masri, M.D., Assistant Professor**

Medical School / Graduation date	Damascus University, Syria	1989
Internship and year	Cleveland Clinic Foundation	1992
Residency and year	Case Western Reserve University	1994

**Senthil Meenrajan, M.D. M.B.A, Assistant Professor**

Medical School / Graduation date	Madras Medical College, India	1997
Internship/residency and year	Robert Packer Hospital	2004
Subspecialty training and year	Oregon Health Sciences University (Geriatric Medicine)	2005
Post-graduate training and year	Canyon College (MBA: Healthcare Administration)	2004

**Carlos Palacio, M.D., M.P.H., Assistant Professor**

Medical School / Graduation date	University of Miami	1993
Internship/residency and year	University of Florida, Jacksonville	1997
Post-graduate training and year	University of North Florida (MPH, Master of Public Health)	2007

**James Phillips, M.D., Assistant Professor**

Medical School / Graduation date	St. George's University, West Indies	2001
Internship/residency and year	University of Florida, Jacksonville	2005

**Pramod Reddy, M.D., Assistant Professor**

Medical School / Graduation date	Sri Dev Raj Urs Medical College, India	1992
Internship/residency and year	Stony Brook University Hospital	2000

**Manish Relan, M.D., Assistant Professor**

Medical School / Graduation date	Armed Forces Medical College, India	1995
Internship and year	Brookdale University Hospital	2000
Residency and year	Scranton Temple Residency Program	2002

**Elisa Sottile, M.D., Assistant Professor**

Medical School / Graduation date	Temple University School of Medicine	1993
Internship/residency and year	University of Pennsylvania	1997

PUBLICATIONS

SC Reddy, R. Sullivan, R. Zaiden, V. Lopez De Mendoza, KJ Vega, NS Nahman, Jr, **I. Alexandraki**. Hepatitis C and the risk of bacteremia in hemodialysis patients with tunneled vascular access catheters. *South Med J* 2009 Apr; 102(4):374-7 PMID: 19279528

Alexandraki, C. Palacio, J. House, A.D. Mooradian, C Catalano. A Resource-Based Relative Value Scale Analysis Between Teaching and Nonteaching Hospitalist Services. *Health Care Manag* (Frederick). 2009 Jan-Mar;28(1):81-5. PMID: 19225341

I. Alexandraki, R. Sullivan, R. Zaiden, C. Bailey, Y. McCarter, A. Khan, JK. Offutt, UY. Bhatt, D. Plott, NS. Nahman Jr. Blood culture isolates in hemodialysis vascular catheter-related bacteremia: *Am J Med Sci*, 2008 Oct;336(4):297-302. PMID 18854670

Edwards L, Gauger C, Rana F "Sickle Cell Disease: The Transition from Pediatric to Adult Providers" *Northeast Florida Medicine*, Vol 59, No 4 2008.

Reiss J, Wood D, **Edwards L**, Daniel P "Healthcare Transition for Youth with Special Healthcare Needs" *Northeast Florida Medicine*, Vol 59, No 4 2008.

Chisholm S, Gummadi B, Vega KJ, **House J**. "Sandostatin Causing Reversible Thrombocytopenia", *Eur J Gastroenterol Hepatol*. 2009 Feb 24

Masri G, Cuffe S, **Edwards L** "Mental Health Issues in Adolescents and Young Adults" *Northeast Florida Medicine*, Vol 59, No 4 2008.

Senthil Meenrajan, MD, MBA, S. Subbiah, "Considerations in the Management of Colorectal Cancer in the Elderly". *Northeast Florida Medicine*. Vol 60, No1 2009

Palacio C, House J, Mooradian A, **Alexandraki A**. "A comparative study of unscheduled hospital readmissions in a resident staffed teaching service and a hospitalist based service". *South Med J*. 2009 Feb;102(2):145-9.

F. Arnaldo, N. Anatoliotakis, **C. Palacio**, D. Nabert, S. Hsu. "Increased N-Terminal-Pro-B-Type Natriuretic Peptide Levels in Patients With Appropriate Implantable Defibrillator Therapies". *Heart Lung*. 2009 Jan-Feb;38(1):10-6. Epub 2008 Sep 11. PMID: 19150526

Palacio, C. Editorial "Psychological Effects of Poor Outcome on Physicians" *Southern Medical J* 2008 Oct;101(10):985.. PMID: 18791535

Carlos Palacio, Ghania Masri, Arshag Mooradian "A Systematic Review of the Clinical Trials of Black Cohosh in the Management of Menopausal Symptoms" *Drugs and Aging*. 2009; 26(1):23-36. PMID: 19102512

Carlos Palacio, Jeffrey P. Harrison and Dave Garets "A Conceptual Model for Benchmarking Electronic Medical Records Initiatives" *Journal of Medical Systems*, January 2009

Chehade, J, **Palacio, C**, Wood, D, Fox, L "Management of Diabetes in the Adolescent and Young Adult during Transition" *Northeast Florida Medicine*, Vol 59, No 4 2008

Reddy P, Mooradian AD. "Diuretics: An Update on the Pharmacology and Clinical Uses". *Am J Ther*:2009 Jan 8.

Book Chapters and Monographs:

Alexandraki I, Contributing author "Community Acquired Pneumonia" chapter of the textbook "Internal Medicine Essentials for Clerkship Students 2", ACP- Clerkship Directors in Internal Medicine, pages 197-199, 2009

Alexandraki I, Contributing author "Urinary Tract Infection" chapter of the textbook "Internal Medicine Essentials for Clerkship Students 2", ACP- Clerkship Directors in Internal Medicine, pages 180-182, 2009

Alexandraki I, Department of Medicine, [University of Florida College of Medicine-Jacksonville](#). HIV-Related Opportunistic Infections (2009) [Internet], eds. BMJ Point of Care. <http://group.bmj.com/products/evidence-centre/bmj-point-of-care-1>

Alexandraki I: "MKSAP for Students 4", writer of multiple choice questions for the "Urinary Tract Infection" and "Community Acquired Pneumonia" chapters; ACP-Clerkship Directors in Internal Medicine, 2009

Alexandraki I, Department of Medicine, [University of Florida College of Medicine-Jacksonville](#) (2008). 48-year-old woman with HIV- **Ms. Hunt**. In SIMPLE: Simulated Internal Medicine Patient Learning Experience [Internet], eds. Berman and Fall, Institute for Innovative Technology In Medical Education, Lebanon, NH. <http://www.simplecases.org>.

Palacio, C Contributing author "COPD" chapter of the textbook "Internal Medicine Essentials for Clerkship Students" 2nd edition, ACP- Clerkship Directors in Internal Medicine. October, 2008

Palacio, C Contributing author "Hepatitis" chapter of the textbook "Internal Medicine Essentials for Clerkship Students" 2nd edition, ACP- Clerkship Directors in Internal Medicine. October, 2008

Palacio, C Multiple Choice Question Writer. CDIM MKSAP 4 for Students. October, 2008

Palacio C. Ricketts. BMJ publishing group point-of-care Website. July 2008 (US product on pocrates.com)

Palacio C. Rickets. BMJ publishing group Best Practice Website. January 2009 (International product on bestpractice.com)

Carlos Palacio, M.D. (October 2008). 65-year old woman-Mrs Thompson. In SIMPLE: Simulated Internal Medicine Patient Learning Experience Project eds. Berman and Fall. <http://www.simplecases.org>.

Palacio C, Fauzia R. Blast Crisis. BMJ publishing group point-of-care Website. January 2009 (US product on epocrates.com)

Palacio C, Fauzia R. Blast Crisis. BMJ publishing group Best Practice Website. January 2009 (International product on bestpractice.com)

HONORS AND AWARDS

- Irene Alexandraki, M.D.** University of Florida Exemplary Teacher Award 2009
Peer Reviewer - Journal of General Internal Medicine
Peer Reviewer - Journal of Medical Education
Judge - National Poster Finals, ACP Annual Meeting 2009
- Linda Edwards, M.D.** Elected Member and President-Elect, Faculty Council HSC/Jacksonville
Member, Executive Committee, UF Self-Insurance Program
University of Florida Exemplary Teacher Award 2009
Louis S. Russo Outstanding Professionalism in Medicine Award 2009
- Malcolm Foster, M.D.** Governor, Florida Chapter of the American College of Physicians
Treasurer, Board of Directors, Duval County Medical Society
Board of Directors, ACP Foundation
Board of Directors, Florida Georgia Blood Alliance
University of Florida Exemplary Teacher Award 2009
- Alan Halperin, M.D.** Chair, Institutional Review Board, UF & SJMC
- Jeff House, D.O.** University of Florida Exemplary Teacher Award 2009
Chair, Medical Performance Improvement Committee
UF and Shands Jacksonville Medical Center
- Senthil Meenrajan, M.D.** University of Florida Exemplary Teacher Award 2009
DCMS representative- FMA's Health, Education and Public Policy Committee
Duval County Medical Society
- Journals and Communication Committee
 - Homeland Security, Bioterrorism and Emergency Preparedness Committee
 - Legislative Committee
- Carlos Palacio, M.D.** Vice-Chair, Institutional Review Board
- Elisa Sottile, M.D.** University of Florida Exemplary Teacher Award 2009

CLINICAL ACTIVITIES

Inpatient Activity	AY 08/09
Numbers of Inpatient Admissions	4196
Inpatient Days	20068
Average length of stay	4.78
Number of OBU Admissions	967
Number of SNU Admissions	301
Number of IP Consults	1455
Outpatient Activity	
Clinic Visits	15097

DIVISION OF HEMATOLOGY & MEDICAL ONCOLOGY
ACADEMIC YEAR 2009 (7/08 – 6/09)

Highlights

The Division of Hematology & Medical Oncology continued outstanding accomplishments in its clinical and academic missions. The division maintains an ACGME accredited Oncology fellowship training program and actively participates in training internal medicine residents and medical students in inpatient and outpatient settings. Dr. Fauzia Rana, with the help of Tumor Registry, initiated and conducted the first Breast Cancer Symposium and conducted a Breast Cancer Screening program at the Proton Therapy Institute.

Each member of the division has a strong role in division activities. Dr. Rana is Division Chief of Hematology/Oncology. Dr. Pham continues his efforts in the Thoracic Oncology Program and he is on the Quality Improvement Committee. He also works with the Proton Therapy Institute in collaboration of patient care. Dr. Janet Hosenpud is Director of the Medical Oncology Fellowship and continues to work closely with the education of the fellows. We have been successful in hiring Dr. Robert Zaiden as Assistant Professor of Medicine. Dr. Zaiden will join us July 1, 2009.

Patient care: The division continues to work closely with hematology-oncology leadership, and central administration of the UF College of Medicine - Gainesville, to coordinate the divisional mission with growth and development of the Jacksonville Hematology/Oncology Program. Due to the new Proton Beam Facility, it is anticipated that when at full capacity, the facility will result in a 30-50% increase in inpatient and outpatient activity. This year we have already seen a 25% increase in Analytic cases data received from Tumor Registry. In July of 2009, Dr. Rana will be expanding her outpatient clinic to the Emerson location. This will be a multidisciplinary clinic in conjunction with the Breast Surgeon, Radiation Oncologist and Pathologist. With the hiring of additional faculty, the division will increase its ability to serve patients, demands and to set a foundation for increasing patient volume.

Education: The division continues to support the Internal Medicine Residency Program through facilitation of morning report and noon conference core curriculum. The division offers a consult experience in medical oncology to residents at all training levels. We have a weekly didactic lecture series that gives fellows the opportunity to present cases to the faculty. Continuing support of education to division fellows, we have a monthly Journal Club that generates discussion on various oncology related topics throughout the year. There is a quarterly city wide joint conference between University of Florida and Mayo Clinic of Jacksonville. This opportunity allows the fellows to present unusual cases. The fellowship in medical oncology continues to prosper with all positions filled for July 2009 and 2010. Our fellowship program has been granted accreditation for five years.

Research: The Division of Hematology/Oncology is currently conducting 9 clinical trials. We are planning to start approximately 5 new trials in near future. We have started collaboration with Mayo Clinic-Jacksonville and will be conducting cooperative group clinical trials, in addition to the ongoing retrospective and prospective studies.

LISTING OF FACULTY MEMBERS

**Janet Hosenpud, MD, Assistant Professor**

Medical School / Graduation date	University of Washington	1979
Internship/residency and year	Medical College of Wisconsin	1980
Subspecialty training and year	Oregon Health Sciences University	1982

**Dat Pham, MD Assistant Professor**

Medical School / Graduation date	University of Florida Jacksonville	1997
Internship/residency and year	University of Florida Jacksonville	2000
Subspecialty training and year	University of Florida Jacksonville	2002

**Fauzia Rana, MD, Chief and Assistant Professor**

Medical School / Graduation date	Fatima Jinnah Medical College	1982
Internship/residency and year	University of Rochester New York	1990
Subspecialty training and year	Dana Farber Deaconess Hospital/Harvard	1993

PUBLICATIONS

- Pham D.** Multidisciplinary Approach to Colorectal Cancer Treatment. Northeast Florida Medicine Vol. 60, No1; 9: 2009
- Nguyen T, **Pham D.** Adjuvant Chemotherapy for Colon Cancer. Northeast Florida Medicine Vol. 60, No.1; 20-21; 2009
- Zaiden R, **Pham D.** Chemotherapy for Metastatic Colorectal Cancer. Northeast Florida Medicine Vol. 60, No 1: 22-23; 2009.
- Meenrajan S, Subbiah S, **Pham D.** Consideration in the Management of Colorectal Cancer in the Elderly. Northeast Florida Medicine Vo. 60, No1; 24-28; 2009
- Reddy S, Sullivan R, **Zaiden R,** De Mendoza V, Naik N, Vega K, Nahman S, Alexandraki I. Hepatitis C Infection and the Risk of Bacteremia in Hemodialysis Patients with Tunneled Vascular Access Catheters. Southern Medical Journal Volume 102, Number 4, April 2009
- Nguyen T,** Pham D. Adjuvant Chemotherapy for Colon Cancer. Northeast Florida Medicine Vol. 60, No 1; 20 – 21; 3.2009.
- Edwards L; Gauger C, **Rana F.** Sickle Cell Disease: Transition from Pediatric to Adult Providers; NEFM, vol. 59, No. 4 December 2008
- Rana F,** Garg P, Buzaianu E, Guthrie T. Predictors of Toxicity and Toxicity Profile of Adjuvant Chemotherapy in Elderly Breast Cancer Patients (The Breast Journal)
- Zaiden R, **Rana F.** Sinusoidal Lymphoma presenting as recurrent Sinusitis (pending publication Consultants Live)
- Palacio C, **Rana F.** Blast Crisis; British Medical Journal: December 2008; online eocrates.com/u29111026
- Nguyen T,** Pham D. Adjuvant Chemotherapy for Colon Cancer. Northeast Florida Medicine Vol. 60, No 1; 20 – 21; 3.2009

Zaiden R, **Nguyen T**. Large B Cell Lymphoma presenting as recurrent sinusitis. Accepted for publication in Consultant

Cortas J, Seither K, Maziaz R, **Pham D** et al. Superiority of Rasburicase Versus Allopurinol on Plasma Uric Acid Control in Adult Patients with Hematologic Malignancies at Risk of Developing Tumor Lysis Syndrome: Results of a Randomized Comparative Phase III Study; 12:2008

Abstracts:

Zaiden R. 31st Annual San Antonio Breast Cancer Symposium; A Retrospective Review of Demographics and Stage of Presentation in Patients with ER/PR/Her2-Neu Receptor Negative (Triple Negative) Breast Cancer. December 2008

Rana F, Jasani N. Racial Discrepancies in Breast Cancer in Urban Hospital Retrospective Analysis. San Antonio Breast Symposium, December 2008, San Antonio TX; presenter.

Zaiden R, Latif N, Pham D, Hosenpud J. Dermatofibroma Protuberans: A case report and review of literature. Accepted in Clinical Advances in Hematology and Oncology. Abstract 12.08

Rana F. A retrospective review of demographics and stage of triple-negative breast cancer. Abstract #30042 IDe11553 www.asco.org and www.jco.org June 2009.

CLINICAL ACTIVITIES

Inpatient Activity	AY 08/09
Numbers of Inpatient Admissions	173
Inpatient Days	1079
Average length of stay	6.24
Number of OBU Admissions	8
Number of IP Consults	421
Outpatient Activity	AY 08/09
Clinic Visits	4970

CONTRACTS AND GRANTS

Principal Investigator	Sponsor	Title	Project Period	Total Direct Cost
Pham, Dat	I3 Research (Ingenix Pharmaceutical Service)	Phase III Trial, Breakthrough Cancer Pain in Subjects taking opioids (043 Pain study)	03/22/2007-02/26/2009	\$16,967.32
Pham, Dat	Favrille (Favid-08)	Phase II Study of Continued Immunotherapy with Favid (Id-KLH) and GM-CSF in Patients with Stable or Responding Grade 1 or 2 Follicular B-Cell Lymphomas.	07/01/2004-03/11/2009	\$1,299.50
Pham, Dat	Medarex (MDX-010-20)	Phase III Trial, Melanoma Stage III or IV	05/17/2005-03/23/2009	\$2,807.00
Pham, Dat	Merck & Co, Inc	Phase I/II, Lung – NCSLC Relapses or Refractory Merck - NSCLC 0863-056	05/01/2007-12/31/2010	\$2,300
Pham, Dat	GSK	Glaxo SABRE NSCLC Study	04/23/2007-11/18/2012	\$3,080.00
Pham, Dat	UF Research Foundation	PHASE III,...IRINOTECAN AND CETUXIMAB VS. IRINOTECAN AS	09/03/2003-05/27/2008	\$15,123.65

Principal Investigator	Sponsor	Title	Project Period	Total Direct Cost
Pham, Dat	Eli Lilly	Observational Study Description H3E0US-B001 Nonsmall Cell Lung Cancer. The Impact of Ethnic Origin on Patients Being Treated Second Line With Pemetrexed.	Pending	Pending
Pham, Dat	Amgen 20060392 Prospective -- Observational	Prospective Multi-national Observational Study to Assess Health Resource Utilization Associated with Skeletal Related Events in Patients with Bone Metastases Secondary to Breast, Prostate, or Lung Cancer, or Multiple Myeloma.	Pending	Pending
Rana, Fauzia	University of Florida	A Phase II Trial of Preoperative Capecitabine Plus Cisplatinum in Early Stage ER Negative, PR Negative, HER-2 Negative Breast Cancer	09/30/2008- 09/30/2009	\$10000.00
Rana, Fauzia	Amgen, Inc AMGEN MDS 20060102	Phase II, MDS – Indication – Thrombocytopenia associated with lenalidomide therapy in MDS	12/04/2006- 11/06/2009	\$8047.30
Rana, Fauzia	Amgen, Inc AMGEN MDS 20050232	Phase II, MDS – Indication – Thrombocytopenia associated with hypomethylating agent therapy in MDS	12/04/2006- 11/06/2008	\$29,497.30
Rana, Fauzia	Alexion P06-001 Exam of PNH (EXPLORE)	Examination of PNH, by Level of CD 59 pm RBC and WBC in bone marrow failure syndrome	03/09/2007- 12/21/2008	\$1,120.00
Rana, Fauzia	Millenium	Multiple Myeloma Study—C05009	05/14/2008- 04/08/2009	\$9,609.50
Rana, Fauzia	Johnson & Johnson Pharmaceuticals , Inc. EPO	A Randomized, Double-Blind, Placebo Controlled, Multicenter Study Evaluating Epoetin Alfa Initiated at 40,000 IU Every Week or 80,000 IU Every Week Versus Placebo in Subjects With IPSS Low- or Intermediate-1 Risk Myelodysplastic Syndromes at Risk For Transfusion.	Pending	Pending
Rana, Fauzia	Wyeth-Breast -- Protocol 3144A- 2-3003-WW	A Phase 3 Randomized, Open Label Study of Neratinib Versus Lapatinib Plus Capecitabine for the Treatment on ErbB 2 Positive Locally Advanced or Metastatic Breast Cancer.	Pending	Pending
Rana, Fauzia	Celator Pharmaceuticals Inc	Phase IIB, Multicenter, Randomized, Open Label, Trial of CPX-351 (Cytarabine:Daunorubicin) Lipsome Injection versus Cutarabine and Daunorubicin in patients with untreated AML 60-75 years of age.	Pending	Pending
Rana, Fauzia	Celator Pharmaceuticals Inc	PHASE IIB, Multicenter, Randomized, Open-label Trial of CPX-351 (Cytarabine:Daunorubicin) Lipsome Injection Versus Intensive Salvage Therapy in Adult Patients ≤60 Years Old with AML in First Relapse Following an Initial CR >1 Month Duration	Pending	Pending
Rana, Fauzia	PPD	A Randomized, Double Blind, Placebo-Controlled Study of the JAK2 Inhibitor INCB018424 Administered Orally to Patients with Primary Myelofibrosis (PMF) and Post Polycythemia Vera/Essential Thrombocythemia Myelofibrosis (Post-PV/ET MF).	Pending	Pending

DIVISION OF INFECTIOUS DISEASES
ACADEMIC YEAR 2009 (7/08 - 6/09)**Highlights**

The Division of Infectious Diseases has continued its clinical and academic missions during this past year. The division is comprised of 6 infectious diseases consultants, all of whom are dually boarded in internal medicine and infectious diseases; 1 Nurse research coordinator and 1 travel medicine nurse. The division provides clinical consultation in infectious diseases at the Shands Hospital/Jacksonville, Hospital Infection Control direction of Shands Hospital, transplantation infectious diseases consultation at Shands, outpatient travel and tropical medicine services, outpatient infectious diseases consultation, and clinical infectious diseases research. The division maintains an ACGME accredited Infectious Diseases fellowship training program and actively participates in the training of internal medicine residents and medical studies in inpatient and outpatient infectious diseases. The division has a contract with the Duval County Health Department (DCHD) to provide professional consultation and programmatic direction for their HIV/AIDS, TB and STD programs and clinical care to the counties' HIV/AIDS, TB and STD patients in DCHD specialty clinics. This contract funds 1.7 FTE of the division's ID physician time.

Each member of the division has a strong administrative role in division activities. Dr. Sands is currently the university ID Division Chief, Medical Director of Communicable Diseases for Duval County Health Department and ID Division Fellowship Program Director. Dr. Vandeveld directs the Travel Medicine section. Dr. Guzman is the Chair of Hospital Infection Control for Shands Hospital, the Division Research Director and coordinates resident and student subspecialty education. Dr. Mitchell-Samon is the Director of the DCHD HIV section. Dr. Bailey is the Director of the DCHD STD section and oversees the DCHD Refugee Health section. She is the university Assistant ID Fellowship Program Director and the consultative liaison for infections in solid organ transplantation at Shands Hospital. Dr. Lauer is the Chief of the DCHD TB section.

Patient care:

University ID Division inpatient and hospital based activity: The division provides full time infectious consultation throughout the Shands/Jacksonville Hospital system. During the 2008-2009 academic year, the division performed over 610 inpatient infectious diseases consultations with subsequent follow-up at Shands Hospital.

Outpatient services: Travel medicine services are provided daily for overseas travelers. 773 travel patients were seen between July 1, 2008 – June 30, 2009.

The division offers outpatient ID consultation by referral provided by Drs. Guzman and Vandeveld at the ACC clinic and more recently also at the Emerson Clinic. During the 08-09 academic year there were 253 outpatient ID consultative visits.

Under contract with the DCHD, the division provides professional and administrative oversight and care for the HIV/AIDS, TB, STD and refugee screening clinical services for the DCHD specialty clinics. During the 08-09 academic year, ID division physicians delivered or over-sighted the care for over 2,600 HIV/AIDS patients, 5410 STD visits, 1013 refugee visits and over 7559 TB visits at DCHD specialty clinics.

Education:

Grand Rounds: The division actively participates both presenting at Medical Grand Rounds and are regular attendees. This academic year faculty gave presentations at 4 UF Grand Rounds, 1 Baptist Medical Center Grand Rounds and 2 topical lectures at the Internal Medicine Annual Update, Amelia Island

Fellowship Training: The division maintains an ACGME accredited fellowship in infectious diseases with one fellow for each of the 2 clinical fellowship years. The fellowship program had an accreditation inspection during this academic year and has been re-accredited on a 6 year cycle.

Resident Training: Faculty provide ID noon core curriculum conferences for the residents; ID consultation teaching rounds; outpatient HIV/AIDS continuity clinics; and resident ID board review sessions.

Medical Student Education: Dr. Guzman presents the HIV/AIDS core content conference for UF medical students by teleconference with UF Gainesville. Medical student rotate on the infectious consultative service.

ID Division Conference Schedule: The division maintains a full conferencing schedule with ongoing meetings Monday and Thursday noon. Conference topics include: regularly scheduled cases conferences; ID board reviews; monthly journal club; HIV topical reviews; monthly TB cases and topical reviews; monthly research conferences; travel and tropical medicine conferences; transplantation ID conferences; and monthly Med/Peds ID joint conference.

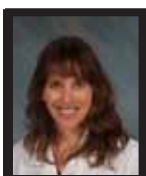
Cooperative extramural resident and fellows' training: As part of their curricula, Mayo Clinic ID fellows, UF Intensivist fellows, UF Pediatric ID fellows and UF Podiatric-Orthopedic residents rotate on the UF ID consultative service.

Research: Drs. Guzman and Bailey serve as members of the University of Florida/Jacksonville Institutional Review Board.

The division is responsible for performance of components of federal and state categorical grants awarded to the DCHD for TB, HIV, refugee and STD care and epidemiologic services. These grants are in excess of \$6.5 million. Additionally the division has been instrumental in acquiring and directing a federal Ryan White Title 3 grant of \$300,000 annually for improved community based access to care, that provides HIV/AIDS care to 250 indigent patients not otherwise brought into care or previously lost from case.

UF research and scholarly writing included: 10 abstracts presented at UF Research Day, 5 abstracts presented at national and statewide meetings, 7 book chapters and 10 journal articles accepted for publication, 7 externally funded research protocols and 4 internally developed research protocols.

LISTING OF FACULTY MEMBERS



Christina Bailey, MD, Assistant Professor

Medical School / Graduation date	University of Texas Health Science Center, Houston, TX	1995
Internship/residency and year	University of Florida Department of Medicine, Jacksonville, FL	1998
Subspecialty training and year	University of Florida Department of Medicine, Jacksonville, FL	2000



Nilmarie Guzman, MD, Assistant Professor

Medical School / Graduation date	Ponce School of Medicine, Ponce, PR	1996
Internship/residency and year	Damas Hospital, Ponce, PR	1999
Subspecialty training and year	University of Florida Health Science Center, Jacksonville, FL	2006

**Jeffrey Lauer, MD, Assistant Professor**

Medical School / Graduation date	University of New Mexico School of Medicine, Albuquerque, NM	1994
Internship/residency and year	University Medical Center, Jacksonville, FL	1997
Subspecialty training and year	University Medical Center, Jacksonville, FL	1999

**Levonne Mitchell-Samon, MD, Assistant Professor**

Medical School / Graduation date	University of South Florida College of Medicine, Tampa, FL	1997
Internship/residency and year	University of Florida Shands Jacksonville, Jacksonville, FL	2000
Subspecialty training and year	University of Florida Shands Jacksonville, FL	2002

**Michael Sands, MD, MPH&TM, FIDSA, Associate Professor and Division Chief**

Medical School / Graduation date	Georgetown University, Washington, DC	1972
Internship/residency and year	St. Mary's Hospital, San Francisco, CA	1974
Subspecialty training and year	Tulane University School of Public Health& Tropical Medicine, New Orleans, LA (MPH&TM)	1975
	Louisiana State University School of Medicine, New Orleans, LA (Infectious Diseases)	1977
	Northwestern Memorial Hospital, Dept. of Pathology, Clinical Microbiology Section (Clinical Microbiology)	1981

**Alexander Vandeveld, M.D., Associate Professor**

Medical School / Graduation date	University of Louvain Medical School, Belgium	1963
Internship/residency and year	St. Vincent's Medical Center, Jacksonville, FL	1964
	University Medical Center, Jacksonville, FL	1969
Subspecialty training and year	University of Florida Medical School, Gainesville, FL	1971

PUBLICATIONS

Book Chapters:

Mucormycosis; Palnitkar RM, Sands M. Epocrates, BMJ online monograph

Chancroid. Bailey, CL Epocrates, BMJ online monograph

Urethritis Bailey, CL Epocrates, BMJ online monograph

Leptospirosis. Guzman, N. Epocrates BMJ online monograph

Coxiella. Guzman N. Epocrates BMJ online monograph

Vibrios other than V. cholera. Sands M. Epocrates BMJ online monograph

Hantaviruses in the United States. Sands M. Epocrates BMJ online monograph

Journal Publications:

Blood Culture Isolates in Hemodialysis Vascular Catheter-related Bacteremia Alexandraki I, Sullivan R, Zaiden R, Bailey C, McCarter Y, et al. Am J Med Sci 2008;336(4)

The strategies for management of antiretroviral therapy (SMART) study group, including Sands M. Major clinical outcomes in antiretroviral therapy (ART)-naïve participants and in those not receiving ART at baseline in the SMART study. JID 2008;197:1133-44.

The strategies for management of antiretroviral therapy (SMART) study group, including Sands M. Inferior clinical outcomes of the CD4 cell count-guided antiretroviral treatment interruption strategy in the SMART study: Role of CD4 cell counts and HIV RNA levels during follow-up. JID 2008;197:1145-55.

Bailey C, Smith V, Sands M. Hepatitis B vaccine: A seven year study of adherence to the immunization guidelines and efficacy in HIV- 1 positive adults. IJID 2008; 12:e77 – e83.

The SMART/INSIGHT and D:A:D Study Groups, including Sands M. Use of nucleoside reverse transcriptase inhibitors and risk of myocardial infarction in HIV infected patients. AIDS 2008, 22:F17-F24.

Mannepalli S, Sands M, Guzman N, McCarter Y. Pulmonary nocardiosis as the initial presenting infection in HIV/AIDS. Chest (meeting abstracts) 2008, 134: C54001

Fox Z, Phillips A, Cohen C et al and the SMART study group including Sands M. Viral resuppression and detection of drug resistance following interruption of a suppressive non-nucleoside reverse transcriptase inhibitor based regimen. AIDS 2008;22:2279-2289.

Vindas-Cordero J, Sands M, Sanchez W. Austrian's triad complicated by suppurative pericarditis and cardiac tamponade: A case report and review of the literature. IJID 2009;13:e23-e25.

Mocroft A, Wyatt C, Szczedh L, et al and the SMART study group including Sands M. Interruption of antiretroviral therapy is associated with increased plasma cystatin C. AIDS 2009;23:71-82.

Mitchell-Samon L. Non-infectious cause of Pneumonia in an immuno compromised patient.. Manuscript accepted for publication in Hospitalist Physician

Abstracts presented at meetings:

Nontuberculous mycobacterial bloodstream infections in NIH patients with primary and acquired immunodeficiencies (1996-2007); **Palnitkar RM**, Shea YR, Holland SM, Banacloche JG, Palmore TN Poster at IDSA/ICCAC 2008:

Many faces of Tuberculosis: Tuberculous meningitis in an immunocompromised patient. Mannepalli S, Lauer J. Poster presentation at Statewide TB and Refugee Health Meeting , Tampa Florida, October 2008

Sleep Quality and Presence of Sleep Disordered Breathing In an Inner City African American HIV Seropositive Population 50 years and older. Mannepalli S, Sands M. American Conference for the Treatment of HIV, Denver, Colorado in May 2009.

Pulmonary Nocardiosis as the initial presenting infection in HIV/AIDS. Mannepalli S, Sands M. Oral presentation at Annual American College of Chest Physicians meeting, Philadelphia, Pa. October 2008

Mycobacterium tuberculosis osteomyelitis in a patient with Human immunodeficiency virus/ Acquired Immunodeficiency syndrome (HIV/AIDS) – A Clinical Reminder. Mannepalli S. Lauer J. Poster presentation at Regional ACP meeting , Tampa, Florida September 2008

HONORS AND AWARDS

Michael Sands., M.D.	Exemplary Teacher	2008
Nilmarie Guzman, MD	Exemplary Teacher	2009

CLINICAL ACTIVITIES

Inpatient activity	AY 08/09
Consults	611
Outpatient activity	
UF Travel Medicine	773
ID Consultation Clinic	253
DCHD HIV/AIDS patients	2600
STD visits	5410
Refugee visits	1013
TB visits	7559

GRANTS AND CONTRACTS

Principal Investigator	Sponsor/Title
Guzman	CEFTO-SSK-4001 A prospective, multi-center, observational registry involving patients hospitalized with complicated skin and soft tissue infections (cSSTI) for IV antibiotic therapy
Sands	NCI-NIH/ Identification and functional analysis of metastasis proteins NV 17751: Observational Cohort Study of Pneumonia in Fuzeon-Exposed and Non-Exposed Patients.
Guzman	NXL104/2001 A prospective, multicenter, investigator-blinded, randomized, comparative study to estimate the safety, tolerability and efficacy of NXL104/ceftazidime vs. imipenem cilastatin followed by appropriate oral therapy in the treatment of complicated urinary tract Infections in hospitalized adults (open)
Sands	Ceftibuten Study: Evaluation of Single-Dose Ceftibuten for Treatment of Uncomplicated Gonococcal Urethritis in Men.
Bailey	A prospective study of the effect of Compath use on renal transplant outcomes.
Mitchell-Samon	An accelerated schedule for Hepatitis B vaccination of HIV patients – Pilot study assessing completion rates and seroconversion
Mannepalli, Sands	Sleep disorders in elderly HIV infected Afro-American patients seen in a large inner city clinic.
Guzman	A4001067 An International, Multicenter, Prospective Observational Study of the Safety of Maraviroc used with Optimized Background Therapy in Treatment-Experienced HIV-1 Infected Patients (open)
Bailey	Antimicrobial susceptibility of GC isolates to an alternative panel of antimicrobial agents.
Guzman	NP303-101 (ADVENT): Randomized, Double-Blind, Parallel-Group, Placebo-Controlled, Two-Stage Study to Assess the Efficacy and Safety of Crofelemer 125 mg, 250 mg, and 500 mg Orally Twice Daily for the Treatment of HIV-Associated Diarrhea (ADVENT Trial)
Guzman	GS-US-183-0145 A Multicenter, Randomized, Double-Blind, Double-Dummy, Phase 3 Study of the Safety and Efficacy of Ritonavir- Boosted Elvitegravir (EVG/r) Versus Raltegravir (RAL) Each Administered With a Background Regimen in HIV-1 Infected, Antiretroviral Treatment-Experienced Adults
Guzman	GS-US-164-0216 The SWIFT Study: A Prospective, Randomized, Open Label Phase IV Study to Evaluate the Rationale of Switching from Fixed Dose Abacavir (ABC)/Lamivudine (3TC) to Fixed-Dose Tenofovir DF (TDF)/Emtricitabine (FTC) in Virologically-Suppressed, HIV-1 Infected Patients Maintained on a Ritonavir-Boosted Protease Inhibitor Containing Antiretroviral Regimen

DIVISION OF NEPHROLOGY AND HYPERTENSION
ACADEMIC YEAR 2009 (7/08 - 6/09)

Highlights

In the 2009 academic year, the division of Nephrology and Hypertension continued to make headway in meeting the goals of the academic mission. In patient care, our first off site chronic dialysis venture with our dialysis provider (DCI) opened and began enrolling patients in August. In education, the Nephrology fellowship continued to thrive under the leadership of Dr Heilig, including the establishment of a joint renal pathology conference with Mayo Clinic Jacksonville. In addition, our annual "Update in Nephrology" CME course was a success for the second year in a row. In research, Dr. Heilig successfully moved his basic laboratory program from the University of Chicago to the UF Jacksonville campus and he has continued with a high level of productivity. Additionally, the group continues its collaborative data mining study of the USRDS with the University of North Florida. Academically, Dr. Heilig was an invited speaker at an international symposium on protein transporters in Turin, Italy, and the Division presented abstracts at the ASN, the AFMR and the National Dialysis Conference.

Patient care: The most important advance this year was the opening of the new outpatient dialysis unit at the Gateway center in Jacksonville. The division of Nephrology serves as the medical director of the 24 station facility. The rapid growth of our outpatient dialysis population necessitated the expansion, and the unit is already at 30% capacity. The inpatient consult service continued to grow and for logistical reasons, the inpatient Nephrology service (Neph A) was eliminated and merged with the consult service. This has greatly enhanced the provision of Nephrology consultative services and significantly improved the educational platform for the fellows. In the outpatient arena, the Nephrology referral practice continues to grow. The strong presence of faculty in the outpatient clinic has stimulated a large influx of new referrals and fostered the continued growth of the outpatient practice. Finally, the outpatient vascular access clinic, and a surgical service for the provision of vascular access has continued to aid in the goal of establishing permanent access in all of our dialysis patients.

Education: The most significant event this year was the recruitment of Dr. Charles Heilig as the program director of the Nephrology fellowship program. Dr. Heilig is a seasoned academic nephrologist with extensive experience in research, teaching and mentoring, and has proven to be a valuable addition to the program. In addition, both senior fellows attended the ASN, the first year fellows attended the National Kidney Foundation spring meetings and one senior fellow presented at the AFMR Nephrology Fellows Research platform at the Southern AFMR in February. This year the division successfully established a quarterly joint renal pathology conference with Mayo Clinic Jacksonville, and facilitated the establishment of an elective rotation on Nephrology consults with the Naval Air Station Jacksonville family practice program. In teaching, Dr. Nahman was selected as an exemplary teacher by the College of Medicine for 2009. Finally, the Division conducted its second annual Update in Nephrology CME conference in February, and the sessions were very well received. The group plans another course in 2010.

Research: The major accomplishment this year was the moving and establishment of Dr. Heilig's basic science laboratory from the University of Chicago to the UF Jacksonville campus. In addition, Dr. Heilig was an invited speaker at the Gordon Research Conference on Membrane Transport Proteins in Lucca (Barga), Italy in July. He was among 40 international speakers and discussed the role of transporter proteins and apoptosis. He has also obtained funding from DCI for continued support of his laboratory. In clinical research, the division continues the UNF data mining studies of the USRDS with Dr.'s Elfayoumy and Wludyka with submission of our first collaborative research grant in spring 2009. Dr.'s Urquidi and Nahman also submitted NIH and DOD grants assessing the effect of circadian rhythm disturbances on development of metabolic syndrome. Although unfunded, the work has generated

interest from the Office of Naval Research, and the collaboration continues. Finally, Dr. Cu published a book chapter on the immunology of renal transplantation in *Essential Clinical Immunology*.

In the past year, the Division successfully recruited Dr. Hartiha Sakhamuri (senior Nephrology fellow from our program). She is expected to join the group in fall 2009. Dr. Maddirala departed in November. At this time, recruitment of additional faculty continues. We anticipate that the Division maintain its positive trajectory during the coming year, and expect the above in-progress activities to attain fruition during that time.

LISTING OF FACULTY MEMBERS



Gil Cu, MD, Assistant Professor

Medical School / Graduation date	University of the Philippines	1983
Internship/residency and year	Lutheran Medical Center, NY	1991
Subspecialty training and year	Beth Israel Medical Center, NY	1995



Charles Heilig, MD, Professor

Medical School / Graduation date	University of Minnesota	1984
Internship/residency and year	Mayo Clinic Rochester	1987
Subspecialty training and year	Brigham and Women's Hospital, Harvard University	1990



Ronald Mars, MD, Associate Professor

Medical School / Graduation date	St Louis University	1972
Internship/residency and year	Emory University	1976
Subspecialty training and year	Emory University	1978



N. Stanley Nahman, Jr, MD, Professor and Division Director

Medical School / Graduation date	Medical College of Ohio	1979
Internship/residency and year	Presbyterian Hospital Denver, Mt Carmel Health, Columbus	1984
Subspecialty training and year	The Ohio State University	1987



Virginia Urquidi, PhD, Research Associate Professor

Graduate School and year	University of Bilbao, Spain	1978
PhD	Oxford University, UK	1992
Post-doctoral training	Oxford University, UK	1994

PUBLICATIONS

Alexandraki I, **Sullivan** R, Zaiden R, Bailey C, McCarter Y, Khan A, Offutt, JK, Bhatt U, Plott D, **Nahman** Jr NS: Blood culture isolates in hemodialysis vascular catheter-related bacteremia. *Amer J Med Sci*, 336:297-302, 2008.

Goodison S, **Urquidi** V: Breast tumor metastasis: analysis via proteomic profiling. *Expert Rev Proteomics*. 5:457-67, 2008

Reddy S, **Sullivan R**, Zaiden R, **Lopez V**, Naik N, Vega K, **Nahman Jr NS**, Alexandraki I: Hepatitis C infection and the risk of bacteremia in hemodialysis patients with tunneled vascular access catheters. *S Med J*, 102:374-377, 2009.

Sun Y, **Urquidi V**, Goodison S: Derivation of molecular signatures for breast cancer recurrence prediction using a two-way validation approach. *Breast Cancer Res Treat*, in press

Sakai Y, Goodison S, Cao W, **Urquidi V**, Namiki K, Porvasnik S, Urbanek C, Rosser CJ. VEGF induces expression of Bcl-2 and multiple signaling factors in microvascular endothelial cells in a prostate cancer model. *World J Urol*, 2009 Jun 4. [Epub ahead of print]

Cu G and Zabriskie JB. Immunological aspects of transplantation, in *Essential Clinical Immunology*, John B. Zabriskie, Editor, Cambridge University Press, New York, pg 331-349, 2009

Vesely E, **Heilig C**, Brosius III F. GLUT1 induced cFLIP expression promotes proliferation and prevents apoptosis in vascular smooth muscle cells. *Am J Physiol Cell Physiol*, July 8, 2009 (E-Pub. ahead of print)

Wang Y, Heilig Y, Minto Y, Chen S, Xiang M, Dean D, Geiger R, Chang A, Pravtcheva D, Schlimme M, Deb D, Wang Y, **Heilig C**. Nephron-deficient FVB mice develop rapidly progressive renal failure & heavy albuminuria involving excess glomerular GLUT1 & VEGF. *Lab Invest*, in press

HONORS AND AWARDS

R Sullivan	3rd place Fellows' Research competition - American Society for Clinical Investigation, Southern section	2008
C Heilig	Invited Speaker, Gordon Conference, Lucca, Italy	2008
NS Nahman, Jr	Exemplary teacher, UF College of Medicine	2009

CLINICAL ACTIVITIES

Inpatient activity	AY 08/09
Inpatient Nephrology admissions	297 ¹
Consults	1029
Acute dialysis runs	4265
Outpatient activity	
UF Jax Nephrology clinic visits	4024
Outpatient dialysis visits	5353
¹ Closed February 28, 2009	

GRANTS AND CONTRACTS

Principal Investigator	Sponsor/Title	Project period	Total direct costs
Heilig C	Dialysis Clinic Inc / Mechanisms of GLUT 1-induced glomerulosclerosis (projects C-2957 and C-3000)	10/08 – 8/12	\$436,733
Urquidi V	Florida Breast Cancer Coalition Research Foundation The PRAME gene in Tumor Progression	2009-2010	\$75,000
Urquidi V	NCI-NIH/ Identification and functional analysis of metastasis proteins	9/04-8/09	\$1,250,000
Urquidi V	NCI-NIH/Towards a non-invasive molecular test for bladder cancer	9/07 - 8/12	\$1,450,000

Urquidi V	Susan G Komen breast cancer Research Fdn/Isolation of monoclonal metastasis-inhibiting antibodies	7/06 - 6/09	\$200,000
Urquidi V	University of Florida Dean's Fund Faculty Research Grant/ The role of MMP8 protein isoforms in migration and invasion capabilities of breast cancer cells	8/07 - 9/10	\$30,000
Nahman J, NS	Dialysis Clinic Inc/Update in Nephrology - 2009	2/09	\$20,000
Sommer B, Nahman Jr NS (Co-PI)	Fistula first program/Dialysis Clinic Inc	3/07 - 2/10	\$225,000
Darlington A, Nahman Jr NS (mentor)	University of Florida Dean's Fund for Residents and Fellows Research Grant/The use of thromboelastography as a tool to predict tunneled catheter loss	2/07 - 1/08	\$5,000
Nguyen T, Nahman Jr NS (mentor)	University of Florida Dean's Fund for Residents and Fellows Research Grant/Steps Toward Prevention: A Retrospective Analysis of Risk Factors in ESRD Patients Who Are Exposed to Gadolinium and the Associated Development of Nephrogenic Systemic Fibrosis "	11/07 - 10/08	\$5,000

DIVISION OF PULMONARY, CRITICAL CARE AND SLEEP MEDICINE
ACADEMIC YEAR 2009 (7/08 - 6/09)

Highlights

The Division of Pulmonary, Critical Care and Sleep Medicine has had a productive year. The fellowship training program in Pulmonary and Critical Care Medicine began this year. The fellowship has been an excellent experience for all of us. We hope to add two new faculty this coming year. We will add two fellows per year for a total of 6 fellows by 7/2010.

Patient care: The Asthma Clinic, Sleep Clinics, Thoracic Oncology Clinics, Pulmonary Hypertension and Interstitial Lung Disease Clinics are all busy and have waiting lists of patients who wish to be seen. All faculty members and fellows have become proficient in ultrasound guided procedures and in endobronchial ultrasound. We have begun to use general anesthesia to enable us to place endobronchial stents in the outpatient surgical center.

Education: For the third consecutive year a member of our faculty (Luis Laos, M.D.) was selected as teacher of the year by the Internal Medicine housestaff. The fellows are being given the dominant role in providing the MICU monthly lecture series.

Research: The Pulmonary Hypertension and Interstitial Lung Disease program under Dr. Bajwa has attracted an international study (Compass II) and a grant is being submitted for consideration of NIH funding. Dr. Usman had an oral presentation at the American Thoracic Society meeting concerning echocardiographic findings in critically ill HIV patients. Each member of the faculty has had at least one manuscript published in a peer reviewed journal.

LISTING OF FACULTY MEMBERS



Abubakr Bajwa, M.D., Assistant Professor

Medical School / Graduation date	King Edward Medical College	1999
Internship/residency and year	University of South Dakota	2003
Subspecialty training and year	Mayo Graduate School of Medicine	2007



James D. Cury, M.D., Associate Professor and Division Chief

Medical School / Graduation date	University of Miami	1981
Internship/residency and year	Barnes Hospital/Washington	1984
Subspecialty training and year	Washington University	1987



Kathryn Koch, M.D., Associate Professor

Medical School / Graduation date	John Hopkins	1975
Internship/residency and year	Medical University of South Carolina	1977
Subspecialty training and year	Case Western	1979


Luis Laos, M.D., Associate Professor

Medical School / Graduation date	University Peruana Cayetano Heredia Medical School of Peru	1986
Internship/residency and year	SUNY, Brooklyn	1995
Subspecialty training and year	University of Florida, Gainesville	1998

PUBLICATIONS

Daniels J, **Cury** J, Diaz J. An Unusual Cause of Post-Obstructive Pneumonia. Chest. 2007; 13:930-3.

Rascon-Aguilar I, Pamer M, Wludyka P, **Cury** J, Coultas D, Lambiase L, Nahman S, Vegas K. Role of Gastroesophageal Reflux Symptoms in Exacerbations of COPD. Chest. 2006; 130:1096-1101.

Anatoliotakis N, Chisholm S, Moncur L, Ketty A, **Cury** J. A hypotensive 22 year old man with chest pain, cough and an abnormal chest radiograph. Chest 2009;135:228-32.

Afessa B, **Bajwa** AA, Salman SS, Paroxysmal atrial fibrillation in critically ill patients with sepsis. Journal of Intensive Care Medicine 2008 May-June; 23(3):178-83. Epub 2008 Apr 28.

Bajwa AA. A clinical experience with Bosentan in a heterogenous pulmonary hypertension population. Chest 2006 October; Supp 130(4):2558.

Kramer D, Arasi L, Cancbal J, **Bajwa** AA. Automated prone positioning and axial rotation in critically ill , non-trauma patients with ARDS. (Accepted pending publication) Journal Intensive Care Medicine.

Usman F, Pulido J, **Bajwa** AA. A 19 year old boy with exertional dyspnea. (Accepted, pending publication).

Griffin JP, **Koch** KA, Nelson JE, Cooley ME. Palliative care consultation, quality-of-life measurements, and bereavement for end-of-life care in patients with lung cancer. ACCP evidence-based clinical practice guidelines (2nd edition). Chest 2007;132(3 Suppl);404S-422s.

Koch KA. Allow Natural Death: Do Not Resuscitate Orders. Northeast Florida Medicine. 2007 (Suppl);9-13.

Mazidi P, Bajestani S, Khan M, Khair T, **Laos** L. Goodpasture's Syndrome: A Case Report and Review of Literature. The Internet Journal of Internal Medicine. 2008:Volume 7, Number 2.

HONORS AND AWARDS

Luis Laos, M.D. University of Florida Exemplary Teacher 2008

CLINICAL ACTIVITIES

Inpatient activity	AY 08/09
Inpatient Pulmonary admissions	449
Inpatient Days	3023
Average length of stay	6.73
Number of IP Consults	962
Outpatient activity	
Clinical Visits	2956
Procedures	
Bronchoscopies	539
Sleep Studies	666

DIVISION OF RHEUMATOLOGY AND CLINICAL IMMUNOLOGY
ACADEMIC YEAR 2009 (7/08 - 6/09)**Highlights**

Although we are still a small division, we have achieved milestone steps in our steady march towards a successful and interdependent division for patient care, research and education at University of Florida College of Medicine, Jacksonville. Dr. Gurjit Kaeley, as an Assistant Professor of Medicine and Director of Musculoskeletal Ultrasound, and Marinella Lipinski, as a research coordinator, joined us in December 2008. We have also successfully recruited Dr. Chrysoula Pappa as an Assistant Professor of Medicine and she will be joining our division in July 2009. Dr. Ghaith Mitri joined UF – Jacksonville as the Division Chief in September 2007 as the first full-time rheumatologist in over ten years. There is a major shortage of rheumatologists in Jacksonville and we hope with our diverse backgrounds, supportive leadership, hard work and compassion to excel in patient care, research and education will allow us to establish the first fellowship training program in Rheumatology at this institution by July 2010. Currently, we have full-time coverage of outpatient and inpatient consults and rheumatological services especially musculoskeletal ultrasound and IV infusion therapies. We are also working on providing allergy testing and expertise as part of our clinical immunology practice. Education was emphasized with more student and resident rotations, lectures, guest speakers, and round table discussions covering multiple rheumatological and healthcare related issues. Academically, the division published multiple publications in peer-reviewed journals, was awarded a grant and is working on multiple clinical trials, both pharmaceutically sponsored and investigator initiated.

Patient care: The most important achievement was improving access to rheumatological services in the outpatient and inpatient settings. In previous years, the next available appointment for a new patient exceeded 6 months, but it has been minimized to couple of weeks. Inpatient rheumatology consultations are now covered by board certified rheumatologists 24/7 throughout the year. More specialized and patient oriented services are constantly being added to the outpatient setting, such as various infusion services and musculoskeletal ultrasound. The goal is to provide the highest quality of care in response to our patient's needs and to take leadership position in patient satisfaction.

Education: Education is one of the division's top priorities. It is the key element in advancing healthcare and recruiting the rheumatologists of the future. Numerous medical students and residents rotated in the outpatient and inpatient consultative services. Numerous lectures have been given to the internal medicine residents and other training programs within the UF College of Medicine, Jacksonville and our grand rounds included invited guest speakers. Several round table discussions involving residents and faculty from UF and Mayo Clinic in Jacksonville were facilitated in order to strengthen the collegial and collaborative efforts between our educational institutions, residents, and faculty members. For the first year we accommodated rheumatology fellow from outside institutions, such as George Washington University and UF – Gainesville, for musculoskeletal ultrasound training. Ultimately, we hope to offer training courses in musculoskeletal ultrasound and a rheumatology review course for the local and national medical community. We are working in collaboration with UF – College of Medicine, Gainesville and the Mayo Clinic in Jacksonville, FL to establish a fellowship training program for the next academic year.

PUBLICATIONS

K. Ramsubeik, R. Maharaj, G **Mitri**. When diagnosis of rheumatologic disease does not "follow the book. J Musculoskel Med. January 2009; 26(1): 11-14.

K. Ramsubeik, H. Griffiths, G **Mitri**. Arthritis in a patient with severe psoriasis: Narrowing the differential. J Musculoskel Med. Accepted for publications in September 2009.

G. Mitri. Familial Mediterranean Fever. BMJ Point-of-Care 2009; www.pointofcare.bmj.com. (September 2009)
 Bruyn GA, Naredo E, Moller I, Moragues C, Garrido J, de Bock GH, D'Agostino MA, Filippucci E, Iagnocco A, Backhaus M, Swen N, Balint PV, Pineda C, Milutinovic S, Kane DJ, **Kaeley G**, Narvaez JA, de Agustin J, Wakefield RJ, Narvaez J, Schmidt WA. Reliability of ultrasonography in detecting shoulder disease in patients with rheumatoid arthritis. Ann Rheum Dis. 2009 Mar;68(3):357-61. Epub 2008 Apr 4.

LISTING OF FACULTY MEMBERS



Gurjit S Kaeley, M.B.B.S., Assistant Professor and Director of Musculoskeletal Ultrasound

Medical School/Graduation date	The London Hospital Medical College, London, UK	1990
Internship/residency and year	University of Tennessee College of Medicine	1996
Subspecialty training and year	University of Tennessee College of Medicine	1998



Ghaith Mitri, M.D. M.M.M., Assistant Professor and Division Chief

Medical School/Graduation date	Damascus University School of Medicine	1995
Internship/residency and year	Scranton Temple University	1999
Subspecialty training and year	University of Pittsburg School of Medicine	2001
Post-Graduate Training and year	Marshall School of Business, USC	2007

CLINICAL ACTIVITIES

Outpatient activity	
Clinical Visits	1,734

CONTRACTS AND GRANTS

Principal Investigator	Sponsor/Title	Budget/ Value
Mitri G	A randomised, double-blind, placebo-controlled, multi-centre prospective dose-finding Phase II/III study with atacicept given subcutaneously to subjects having recently experienced a flare of systemic lupus erythematosus (SLE). Sponsored by SERONO.	\$110,512
Mitri G	An open-label, randomized study to evaluate the safety, tolerability and efficacy of tocilizumab (TCZ) monotherapy or TCZ in combination with non-biologic DMARDs in patients with active rheumatoid arthritis who have an inadequate response to current non-biologic or biologic DMARDs. Sponsored by Roche.	\$39,496
Bajwa A (PI) Mitri G (Sub-PI) Kaeley G (Sub-PI)	Pulmonary Arterial Hypertension (PAH): COMPASS 2: Effects of combination of bosentan and sildenafil versus sildenafil monotherapy on morbidity and mortality in symptomatic patients with pulmonary arterial hypertension – A multicenter, double - blind, randomized, placebo - controlled, parallel group, prospective, event driven Phase IV study. Sponsored by Actelion.	\$60,000
Mitri G Kaeley G	Psoriatic Arthritis: GRAPPA: The development of a composite measure of disease activity in psoriatic arthritis: GRAPPA collaborative exercise Status: Open IRB03 Approved.	
Mitri G Kaeley G	CORRONA: Consortium of Rheumatology Researchers of North America, Inc. Data Collection Program, Protocol 02-021.	
Mitri G	Psoriatic Arthritis: A phase 3 multi-centre, randomized, double Blind, placebo controlled trial of Ustekinumab, a fully human anti-IL 12/23p40 monoclonal antibody, administered subcutaneously in subjects with active psoriatic arthritis. Sponsored by Centocor. Site selected.	Pending

Mitri G	RA: WA 19926 A multi-center, randomized, double blind, parallel group study of the safety, remission and prevention of structural joint damage during treatment with tocilizumab (TCZ), as a monotherapy and in combination with methotrexate (MTX), versus methotrexate in patients with early, moderate to severe rheumatoid arthritis. Sponsored by Roche.	Pending
Kaeley G	RA: A Randomized, Double-blind, Placebo-controlled, Multiple-dose Study to Evaluate the Safety, Tolerability, and Efficacy of AMG 827 in Subjects with Rheumatoid Arthritis and an Inadequate Response to Methotrexate. Sponsored by Amgen.	Pending
	GRANT: 2009 -2010: Unrestricted grant from Wyeth to develop validated Web Atlas of Sonographic Scoring of Rheumatoid Arthritis Activity.	\$46,500
	GRANT: 2008-2009: Unrestricted equipment loan from Sonosite. Equipment Value: \$70,000	\$70,000



**Department of Medicine
University of Florida
College of Medicine – Jacksonville
653-1 West 8th Street, L20
Jacksonville FL 32209
904-244-8846
www.hscj.ufl.edu/im/**